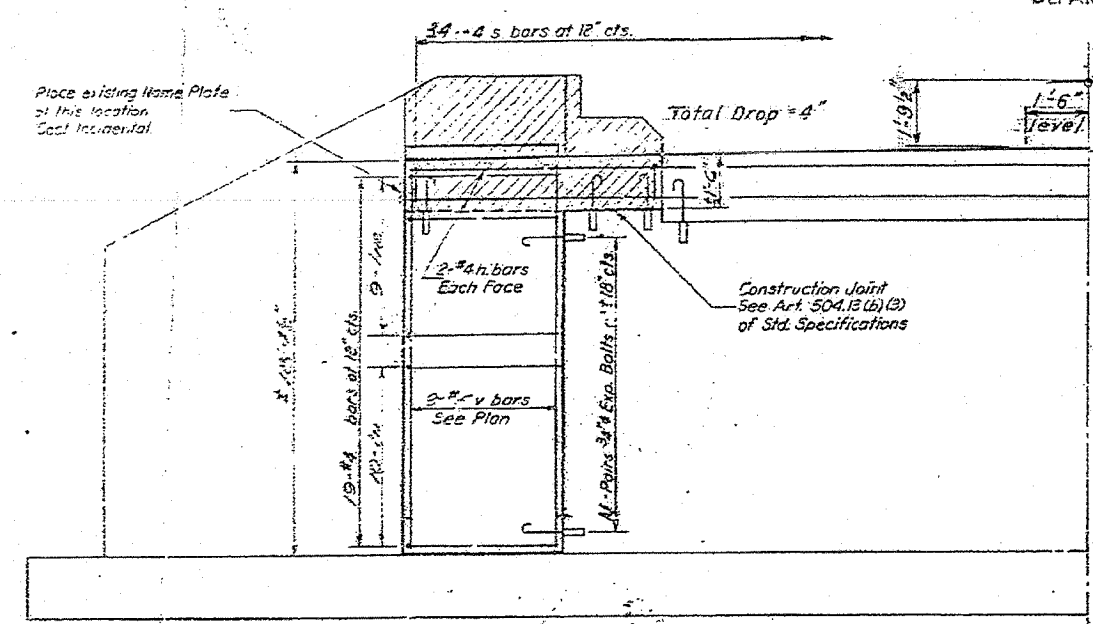
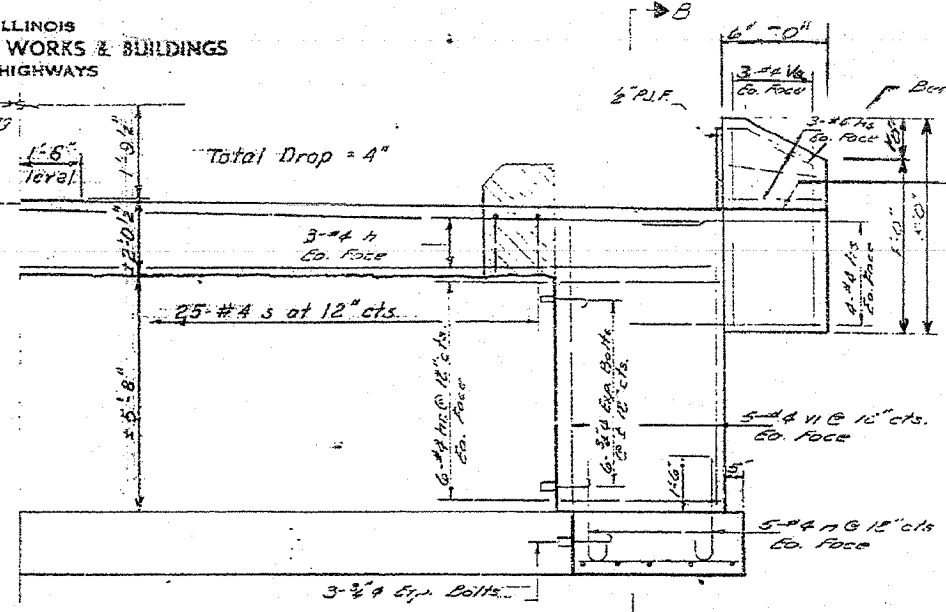


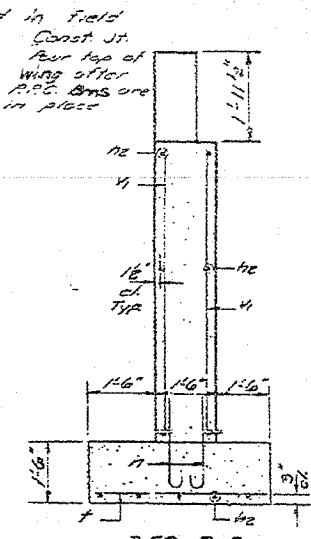
STATE OF ILLINOIS
 DEPARTMENT OF PUBLIC WORKS & BUILDINGS
 DIVISION OF HIGHWAYS



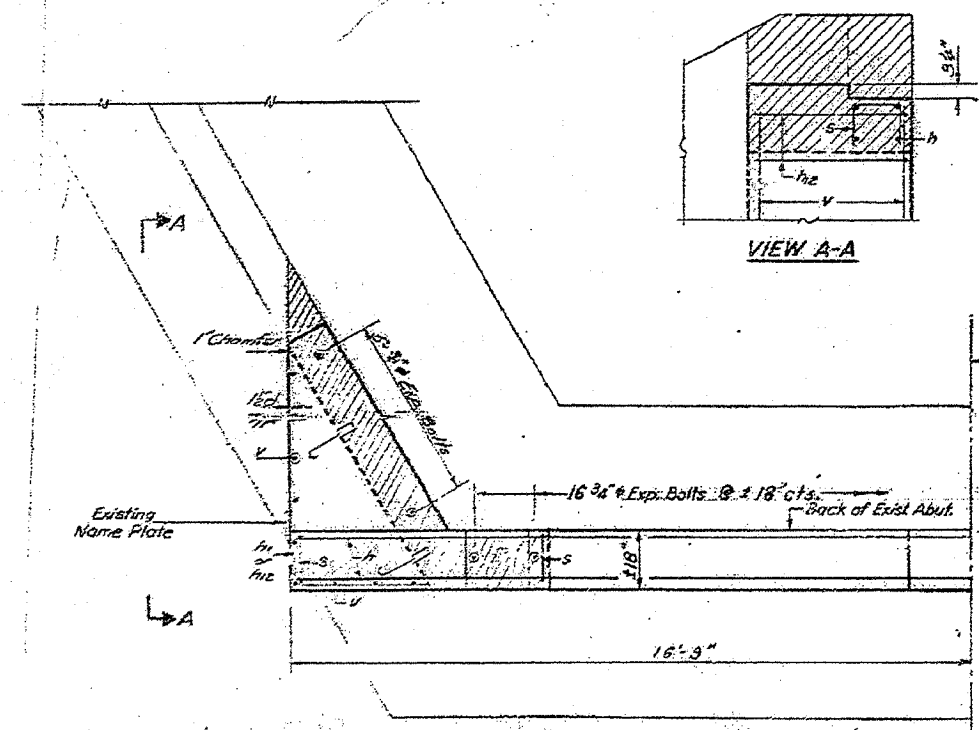
ELEVATION NORTH ABUTMENT



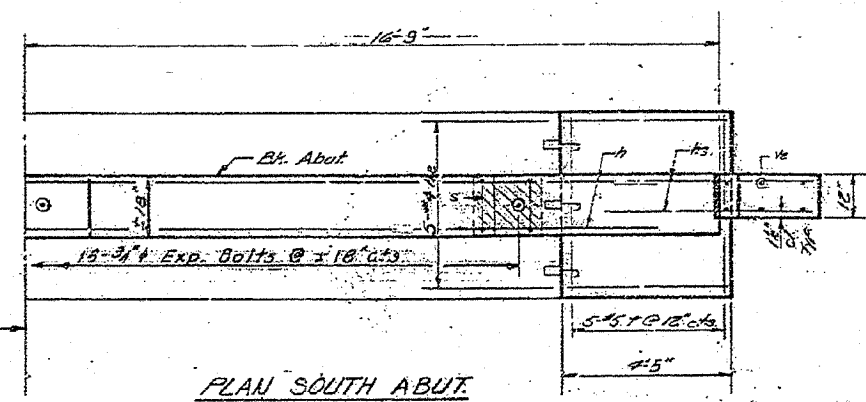
ELEV. SOUTH ABUTMENT



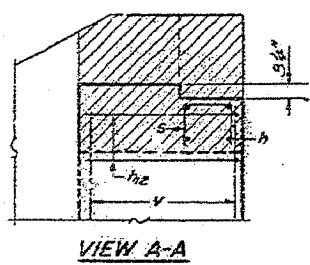
SEC. B-B



PLAN NORTH ABUT.



PLAN SOUTH ABUT.



VIEW A-A

SOUTH ABUTMENT
 BILL OF MATERIAL

Bar	No.	Size	Length	Shape
h2	24	#4	4'-0"	—
h3	16	#4	3'-3"	—
h4	12	#4	2'-9"	—
h	6	#4	33'-3"	—
s	20	#4	3'-3"	—
s	25	#4	3'-9"	□
v	10	#5	4'-3"	—
v	20	#4	7'-0"	—
v	12	#4	4'-9"	—
Class X Concrete Cu.Yds. 9.2				
Reinforcement Bars Lbs. 560				
Expansion Bolts #4 Each 34				
Concrete Removal Cu.Yds. 0.5				

NORTH ABUTMENT
 BILL OF MATERIAL

Bar	No.	Size	Length	Shape
h	4	#4	33'-3"	—
h	20	#4	7'-0"	L
h	18	#4	8'-9"	—
s	34	#4	3'-9"	□
v	10	#5	10'-0"	—
Class X Concrete Cu.Yds. 23.0				
Reinforcement Bars Lbs. 710				
Expansion Bolts #4 Each 70				
Concrete Removal Cu.Yds. 2.5				

NOTES:
 Hatched area indicates Concrete Removal. Reinforcement extending into removed area shall be cleaned and incorporated into the new construction.
 Expansion bolts shall be anchored in sound concrete.
 All edges shall have standard 3/4" chamfers except as noted.

AS REVISED
 ABUTMENTS
 S.B.T. RT. 31. SEC. 188RY-1
 FULTON COUNTY
 STATION: 75+84

REVISIONS	NAME	DATE

ILLINOIS DEPARTMENT OF TRANSPORTATION
 EXISTING SPOON RIVER STRUCTURE
 FOR INFORMATION ONLY
 SCALE: VERT. DATE
 HORIZ. DATE
 DRAWN BY
 CHECKED BY

DESIGNED	W. S. 510	EXAMINED	H. G. Baumann
CHECKED	J. L. Armstrong	DESIGNED	Richard A. Holterman
DRAWN	J. L. Armstrong		
CHECKED	J. L. Armstrong		

J. M. P. May 24, 1971



PLOT DATE: 5/23/71
 FILE NAME: S:\V\Auto\Auto\Auto\Auto.dwg
 PLOT SCALE: 1/8"=1'-0"
 USER NAME: J. Armstrong