

STATE OF ILLINOIS  
DEPARTMENT OF PUBLIC WORKS & BUILDINGS  
DIVISION OF HIGHWAYS

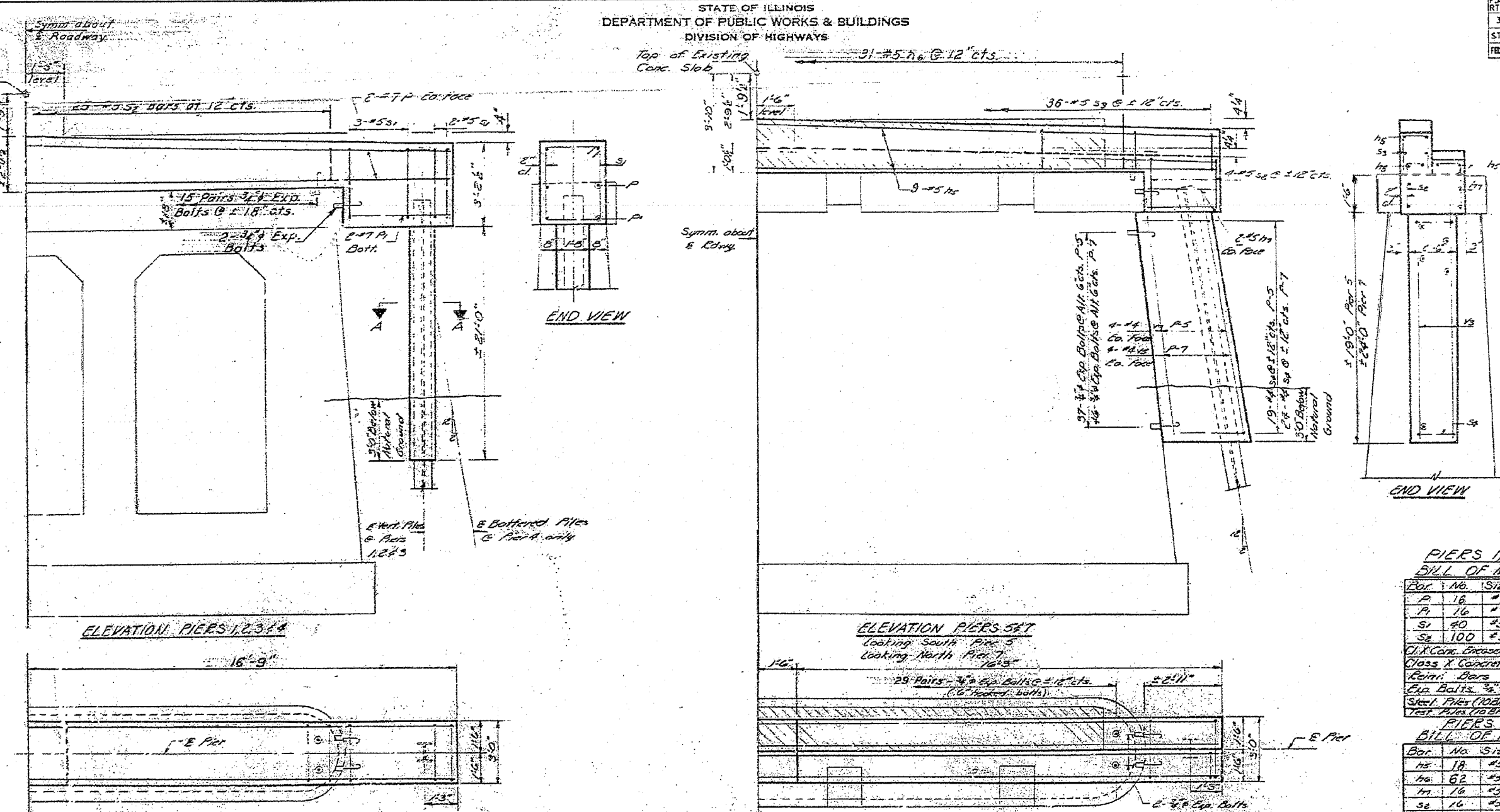
CONTRACT NO. 88753

F.A. RTE.	SECTION	COUNTY	TOTAL SHEET NO.
315	***	FULTON	684 144

STA. TO STA.

ILLINOIS FED. AID PROJECT

181.188RY&188RY-188.188-1



PIERS 1,2,3,4  
BILL OF MATERIAL

Bar No.	Size	Length	Shape
P 16	#7	33'-3"	—
P 16	#7	4'-3"	—
S 40	#5	14'-11"	□
S 100	#5	5'-8"	□
Class X Concrete	Co. 100	13.6	
Reinf. Bars	Lbs.	2310	
Elev. Bolts	#4	Feet	136
Steel Piles (100BP42)	Unit Ft.	330	
Test Piles (100BP42)	Each	1	

PIERS 5&7  
BILL OF MATERIAL

Bar No.	Size	Length	Shape
H 18	#5	35'-3"	—
H 62	#3	3'-8"	—
H 16	#5	21'-9"	—
S 16	#5	5'-8"	□
S 72	#4	6'-2"	—
S 86	#4	7'-10"	□
V 16	#4	20'-0"	—
V 16	#4	25'-0"	—
Class X Concrete	Co. 100	47.6	
Reinf. Bars	Lbs.	2280	
Elev. Bolts	#4	Feet	290
Conc. Removal	Co. 100	7	
Steel Piles (100BP42)	Unit Ft.	178	

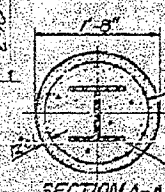
AS REVISED

PIERS 1,2,3,4,5&7  
S.B.T. RT. 31 SEC. 18 DPT-1  
FULTON COUNTY  
STATION: 75+24

**PILE DATA**  
Type - Steel (100BP42)  
Capacity - Driven to refusal  
Est. Length - Pier 1-2 - 62'  
Pier 3 - 50'  
Pier 4 - 52'  
Pier 5 - 54'  
Pier 7 - 35'  
No. Read - 11 plus 1 test pile at Pier 6

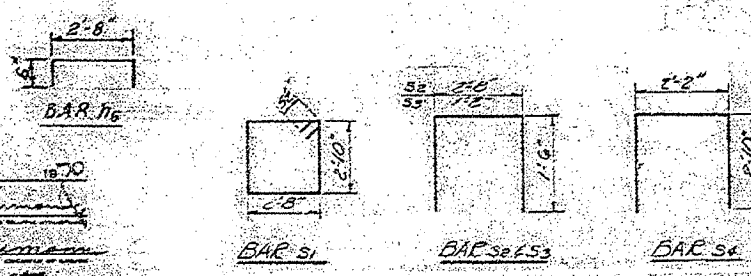
Welded wire fabric 6"x6 mesh #4  
wire weighing 58#/100 sq. ft.

Forms for encasement may be omitted  
when soil conditions will permit.



DESIGNED	Checked
EXAMINED	Checked
DRAWN	Checked
CHECKED	Checked

J.H.P. May 24, 1971



FILE DATE 5/25/70  
FILE NAME 188.188-1  
PLOT SCALE 1/8"=1'-0"  
USER NAME

REVISIONS	NAME	DATE

ILLINOIS DEPARTMENT OF TRANSPORTATION  
EXISTING SPOON RIVER STRUCTURE  
FOR INFORMATION ONLY

SCALE: VERT.      DRAWN BY  
                  HORIZ.      CHECKED BY  
DATE