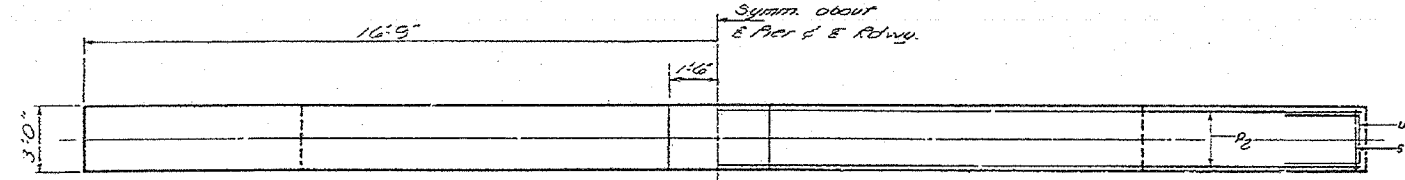


STATE OF ILLINOIS  
DEPARTMENT OF PUBLIC WORKS & BUILDINGS  
DIVISION OF HIGHWAYS

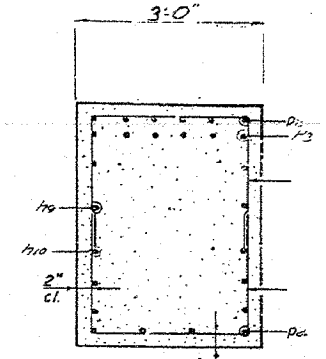
CONTRACT NO. 88753			
F.A. RTE.	SECTION	COUNTY	TOTAL SHEETS
315	***	FULTON	684
STA.	TO STA.		
FED. ROAD DIST. NO.	ILLINOIS	FED. AID PROJECT	

Note:  
Space reinforcement in cap to miss anchor bolts.  
Minimum bar lags = 24 dia. unless otherwise noted.  
All edges shall have standard 3/4 chamfers except as noted.  
Four steps monolithically with cap.

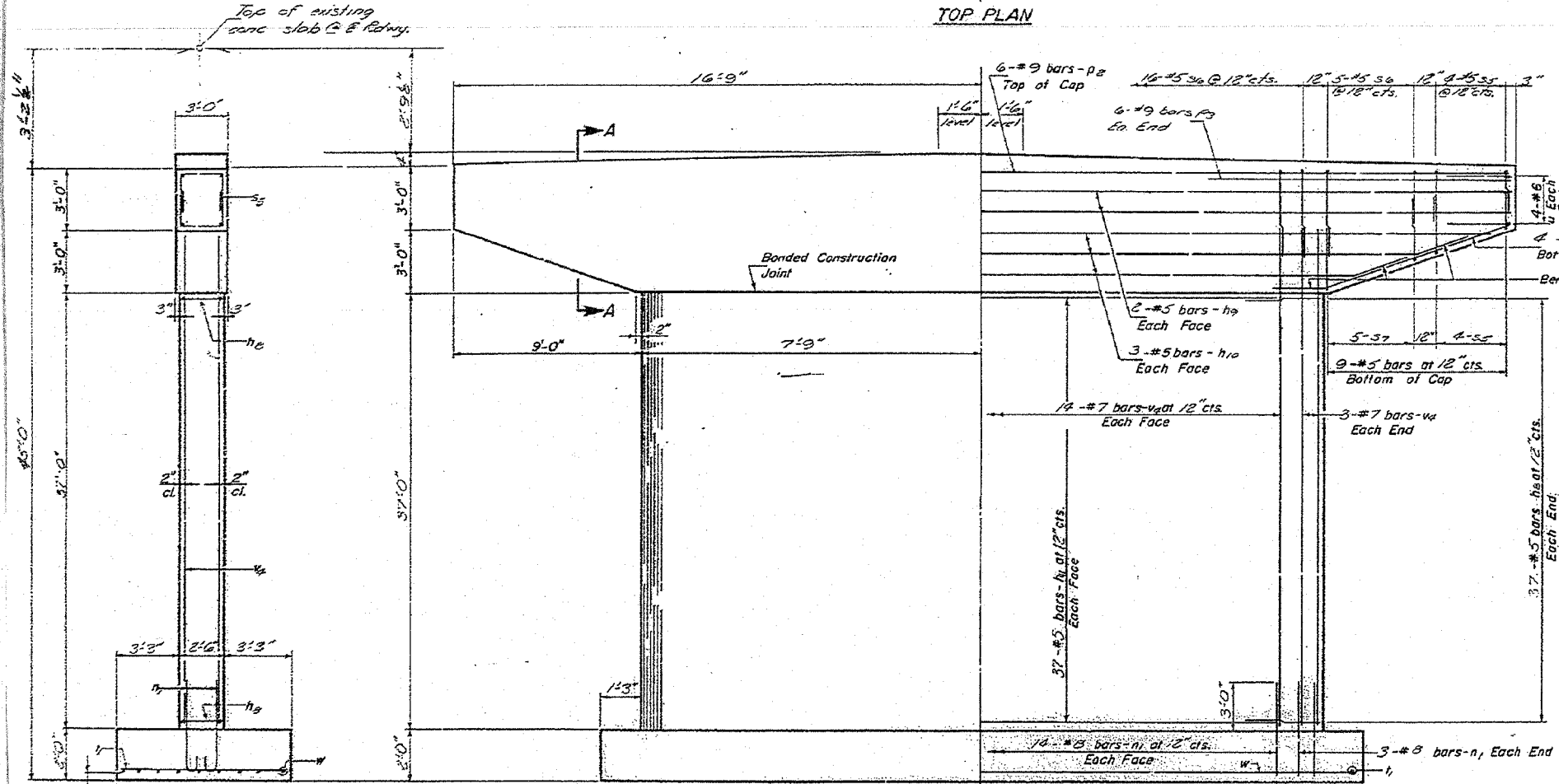
\*\*\* 18L1088RY&188RY-1BR,188-1



TOP PLAN



SECTION A-A

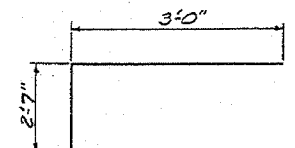


ELEVATION

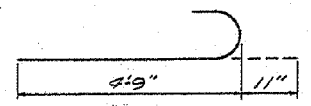
A & B DIMENSIONS

Bar	A	B
s5	2'-8"	2'-8"
s6	2'-5"	3'-9"
s7	2'-8"	3'-2"

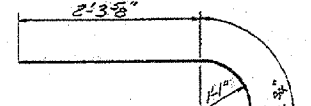
BARS s



BAR u



BAR n1



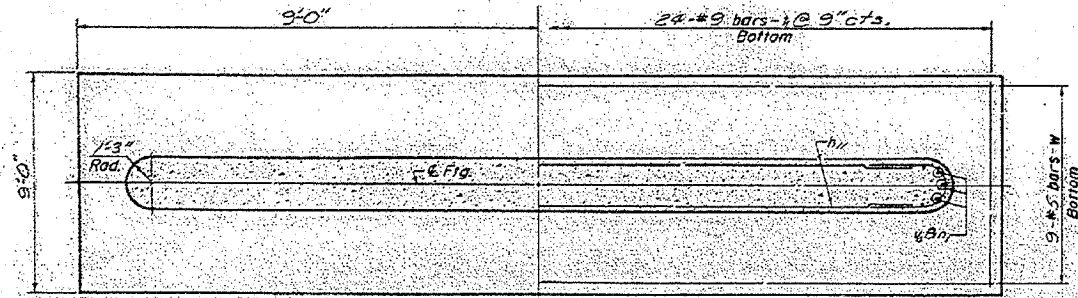
BAR h2

PIER 6  
BILL OF MATERIAL

Bar	No.	Size	Length	Shape
h2	74	#5	8'-0"	□
h9	4	#5	33'-3"	—
h10	6	#5	30'-3"	—
h11	74	#5	13'-0"	—
n1	34	#8	5'-8"	□
p2	6	#9	33'-3"	—
p3	12	#9	13'-0"	—
p4	8	#6	11'-6"	—
s5	16	#5	8'-0"	□
s6	26	#5	10'-2"	□
s7	10	#5	9'-0"	□
u	24	#9	8'-9"	—
v	8	#6	8'-7"	□
w	34	#7	41'-0"	—
x	9	#5	17'-9"	—
Class X Cc crete Cu.Yds. 83.2				
Reinforceme. 1 Bars Lbs. 8150				

PIER 6  
S.L.I. PT 31 SEC. 18 BEY-1  
FULTON COUNTY  
STATION 75+84

END VIEW



FOOTING PLAN

DESIGNED	James Hamilton	EXAMINED	May 5 1970
CHECKED	James Pence	PASSED	Richard H. Holzman
DRAWN	G. Ritchie		
CHECKED	J.P.		

P-10, 1/4"=2'-0" 5-20-68

PLOT DATE 3/22/2008  
FILE NAME c:\p10\p10.dwg  
PLOT SCALE 1/4"=2'-0"  
USER NAME jhutchins

REVISIONS	NAME	DATE

ILLINOIS DEPARTMENT OF TRANSPORTATION  
EXISTING SPOON RIVER STRUCTURE  
FOR INFORMATION ONLY  
SCALE: VERT. DATE  
HORIZ. DATE  
DRAWN BY  
CHECKED BY