

STATE OF ILLINOIS
DEPARTMENT OF TRANSPORTATION

ROUTE NO.	SECTION	COUNTY	TOTAL SHEETS	SHEET NO.
		FULTON	147	1
5 SHEETS				
Contract Number: 88753				

NOTES

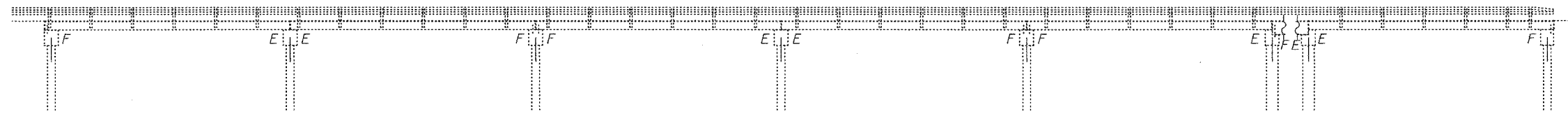
Plan dimensions and details relative to existing structure have been taken from existing plans and are subject to nominal construction variations. It shall be the Contractor's responsibility to verify such dimensions and details in the field and make necessary approved adjustments prior to construction or ordering of materials. Such variations shall not be cause for additional compensation for a change in the scope of the work, however, the Contractor will be paid for the quantity actually furnished at the unit price bid for the work.

Any damage done to the bridge during beam removal shall be repaired by the Contractor. Cost to be included in the cost of "Removal of Existing P.P.C. Deck Beams".

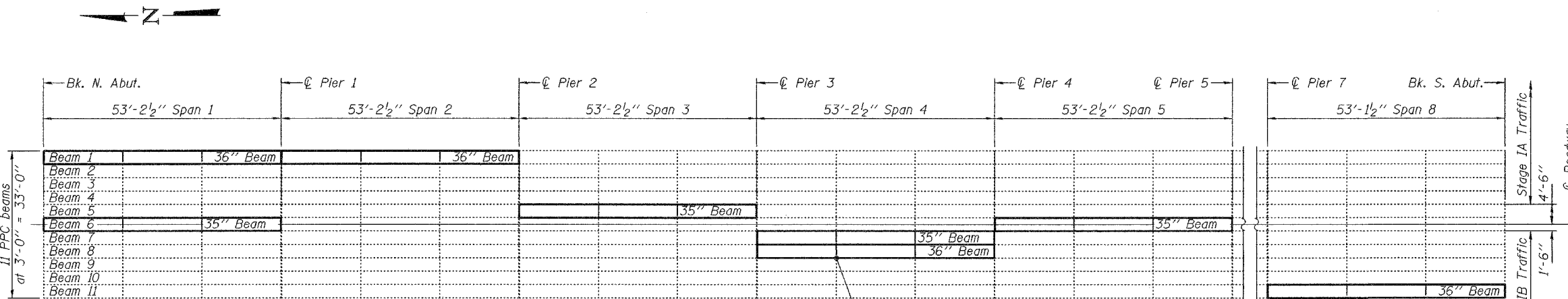
Reinforcement bars shall conform to the requirements of AASHTO M-31 or M322 Grade 60.

The top surface of the beams shall be finished in accordance with Article 504.06 of the Standard Specifications except that the surface shall not be roughened by brooming. The finished surface shall be free of depressions or high spots with sharp corners, and the top edge of keys shall be rounded or chamfered a minimum of 1/4".

Temporary concrete barrier shall only be anchored into the overlay and not the PPC Deck Beams.

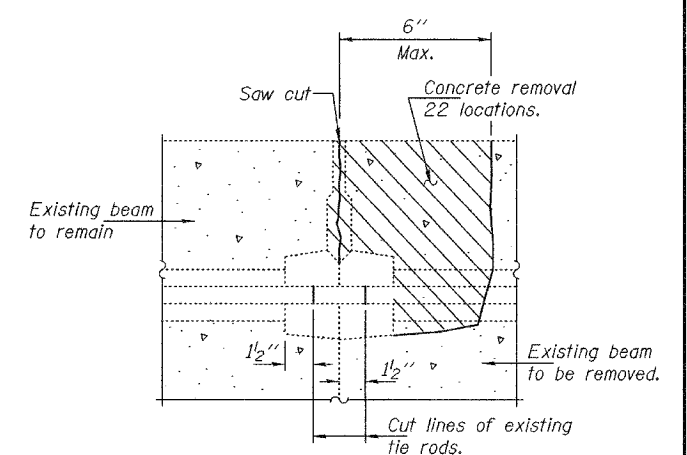


PARTIAL ELEVATION

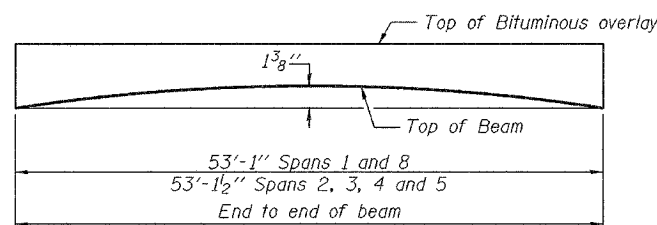


PARTIAL PLAN

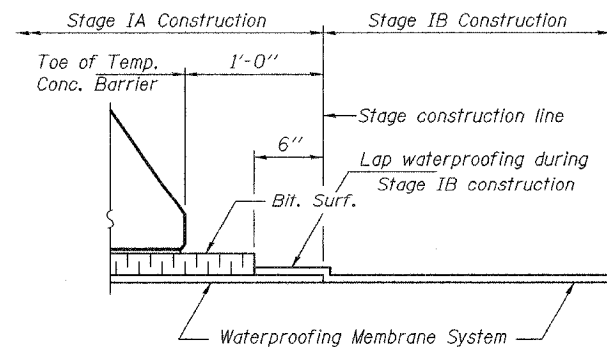
Existing tie rods to be cut (Typ). See detail, this sheet.



BEAM REMOVAL DETAIL AT TRANSVERSE TIES



ANTICIPATED INITIAL CAMBER DIAGRAM



WATERPROOFING TREATMENT AT STAGE CONSTRUCTION

DESIGN STRESSES PRESTRESS UNITS

$f'c = 5,000$ psi
 $f'ci = 4,000$ psi
 $f's = 270,000$ psi (1/2"φ Low Relaxation Strands)
 $f'si = 201,960$ psi (1/2"φ Low Relaxation Strands)

BILL OF MATERIAL

ITEM	UNIT	QUANTITY
Precast Prestressed Concrete Deck Beams (21" Depth)	Sq. Ft.	1239
Bituminous Concrete Surface Removal	Sq. Yd.	32.8
Removal of Existing PPC Deck Beams	Sq. Ft.	1275
Bituminous Surface Course Superpave Mixture D, N70	Ton	19.6
PC Mortar Fairing Course	Foot	640
Waterproofing Membrane System	Sq. Yd.	174.4
Removing & Re-erecting Existing Railing	Foot	160

PLAN AND ELEVATION
FAP RT. 315
FULTON COUNTY
SN 029-0004

DESIGNED	<i>M. J. T.</i>
CHECKED	<i>John A. Morris</i>
DRAWN	<i>ballva</i>
CHECKED	MJT/STB

May 17, 2005
 EXAMINED *John A. Morris*
 ENGINEER OF STRUCTURAL SERVICES
 PASSED *Robert C. Adams*
 ENGINEER OF BRIDGES AND STRUCTURES



EXPIRES 11-30-2006