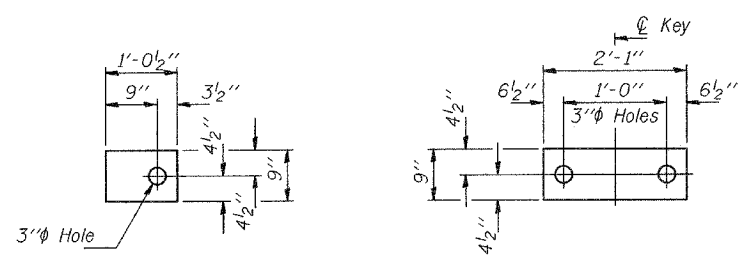


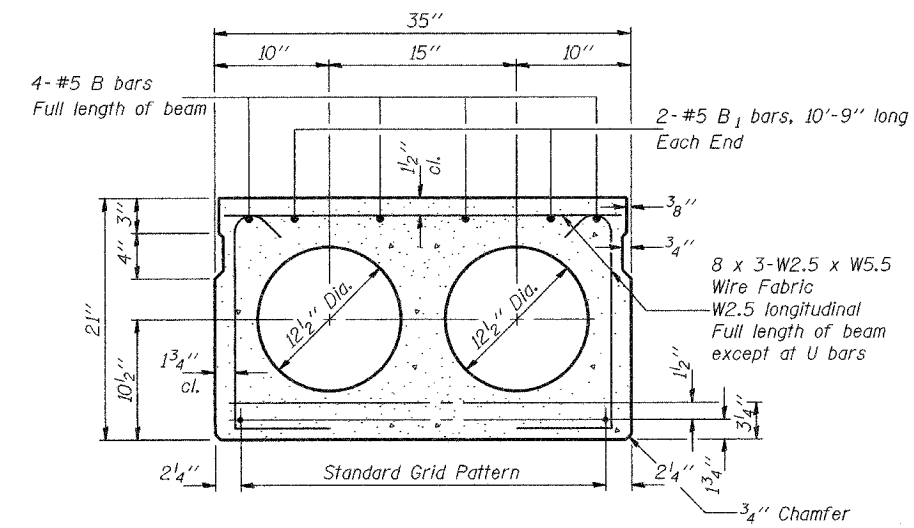
STATE OF ILLINOIS
DEPARTMENT OF TRANSPORTATION

| | | | | |
|-------------------------|---------|--------|-----------|-------|
| ROUTE NO. | SECTION | COUNTY | SHEET NO. | SHEET |
| | | FULTON | 148 | 5 |
| SHEET NO. 2 5 SHEETS | | | | |
| Contract Number: 88753 | | | | |



FABRIC ADJUSTING SHIM

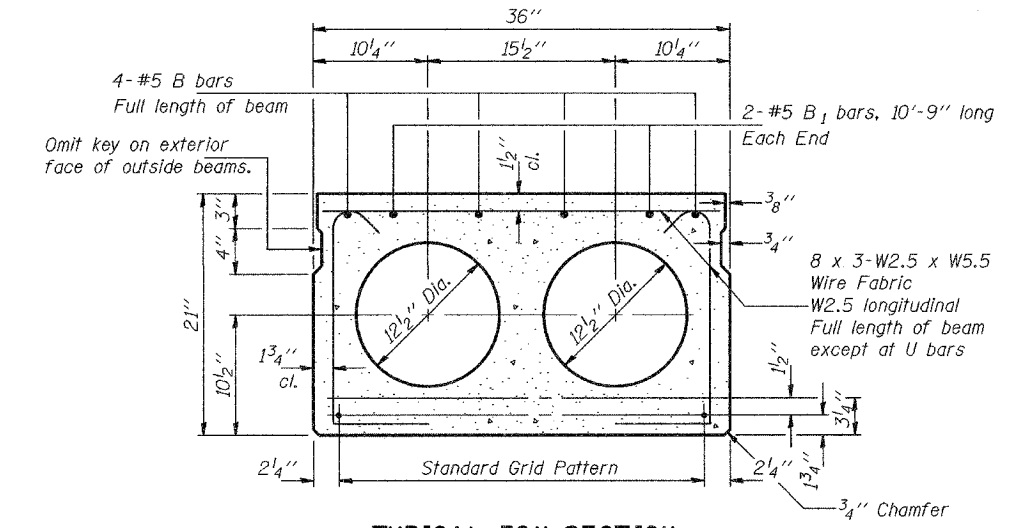
FABRIC BEARING PAD



TYPICAL 35" SECTION

16-1/2" ϕ Strands, Each Strand Stressed to 30,900 Lbs.
6-Strands 1 3/4" up
8-Strands 3 1/4" up
2-Strands 9" up

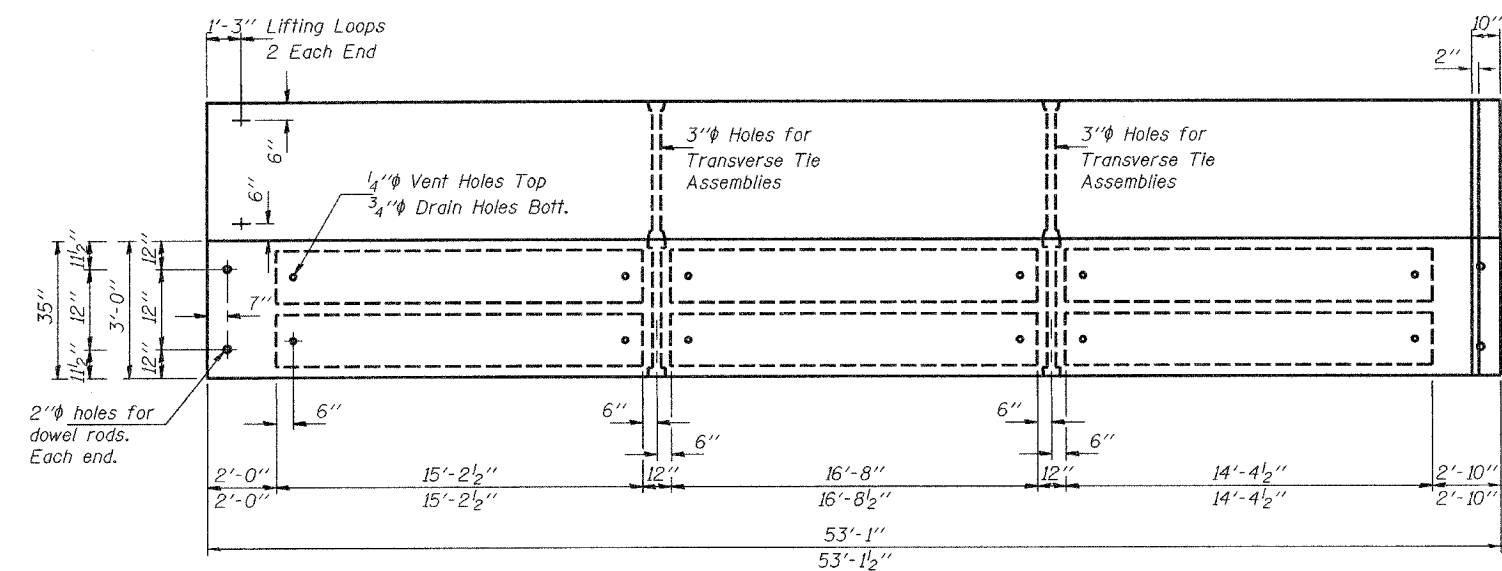
Note: Place strands symmetrically about ϕ of beam.



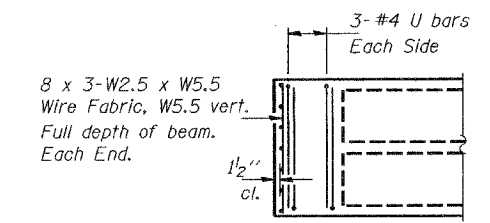
TYPICAL 36" SECTION

16-1/2" ϕ Strands, Each Strand Stressed to 30,900 Lbs.
6-Strands 1 3/4" up
8-Strands 3 1/4" up
2-Strands 9" up

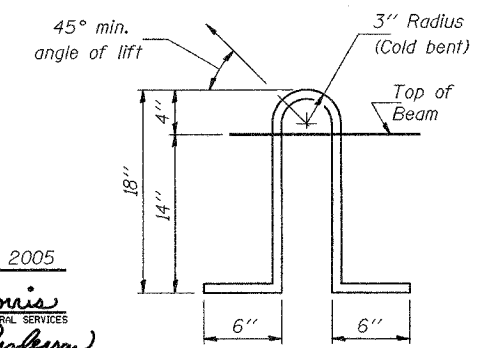
Note: Place strands symmetrically about ϕ of beam.



PLAN



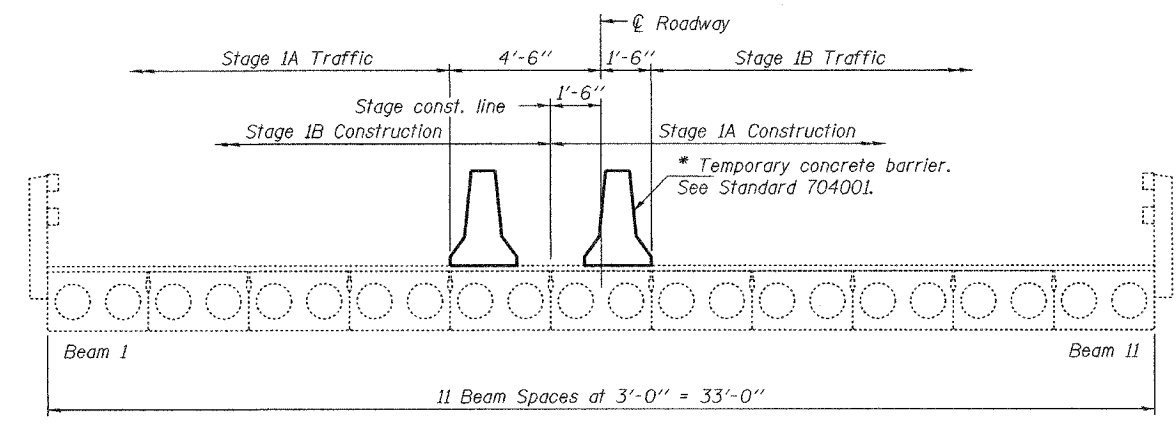
END PLAN



LIFTING LOOP DETAIL

| | |
|----------|---------|
| DESIGNED | MJT |
| CHECKED | SJB |
| DRAWN | balva |
| CHECKED | MJT SJB |

MAY 17, 2005
EXAMINED *John A. Morris*
ENGINEER OF STRUCTURAL SERVICES
PASSED *Ralph E. Anderson*
ENGINEER OF BRIDGES AND STRUCTURES



STAGING

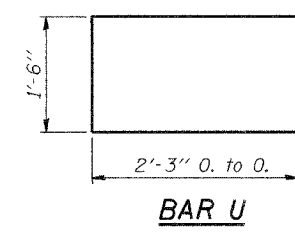
(Looking South)
See sheet 1 of 5 for locations of new beams.

BILL OF MATERIAL

| Bar | No. | Size | Length | Shape |
|--|-----|------|---------|-------|
| Precast Prestressed Conc. Deck Bms. (21'') | | | Sq. Ft. | 1239 |

NOTES

Prestressing steel shall be uncoated high strength, stress-relieved 7-wire strand, Grade 270. The nominal diameter shall be 1/2" and the nominal cross-sectional area shall be 0.153 sq. in. Lifting loops shall be 2 - 1/2" ϕ -270 ksi strands, as shown. The 1" ϕ rods in the transverse tie assembly shall be tightened to a snug fit and the threads set. Pockets that receive transverse tie bar on outside shall be filled with grout after transverse tie assembly is in place. Reinforcement bars shall conform to the requirements of AASHTO M-31 or M-322 Grade 60. The bearing seat surfaces shall be adjusted by shimming to assure firm and even bearing. Two 1/8" fabric adjusting shims of the dimensions shown shall be provided for each bearing. Keyway surfaces shall be cleaned to remove form oil or other bond breaking material prior to shipment of the beams. Cleaning shall be done by sandblasting the keyway areas between top of the beam and the bottom edge of the key. A Corrosion Inhibitor, as covered in the Special Provisions, shall be used in the concrete for precast prestressed concrete deck beams. Required Release Strength, f'cl, shall be 4000 p.s.i.



BAR U

REPAIR DETAILS
FAP RT. 315
FULTON COUNTY
SN 029-0004