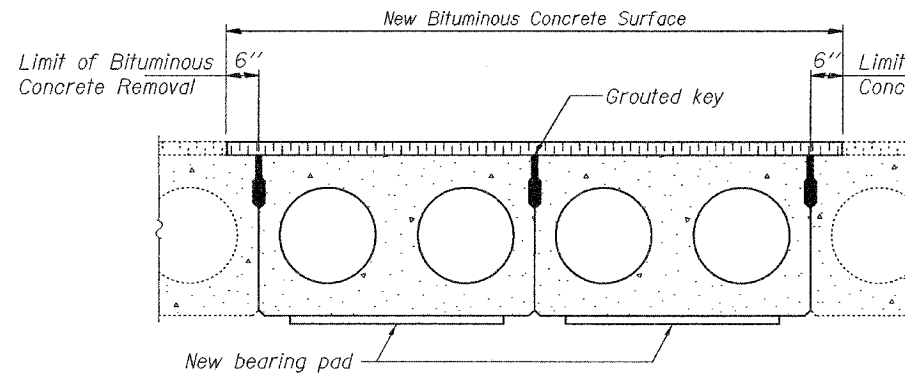


STATE OF ILLINOIS
DEPARTMENT OF TRANSPORTATION

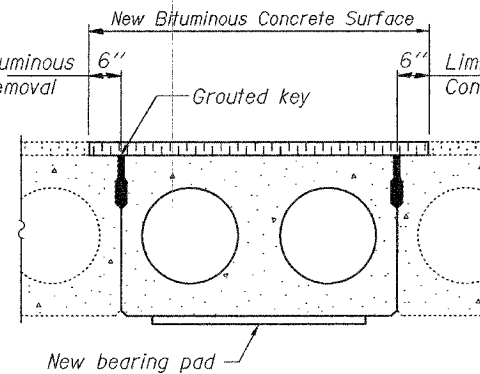
ROUTE NO.	SECTION	COUNTY	TOTAL SHEETS	SHEET NO.
		FULTON		150
FED. ROAD DIST. NO. 7	ILLINOIS	FED. AID PROJECT-		

SHEET NO. 4
5 SHEETS

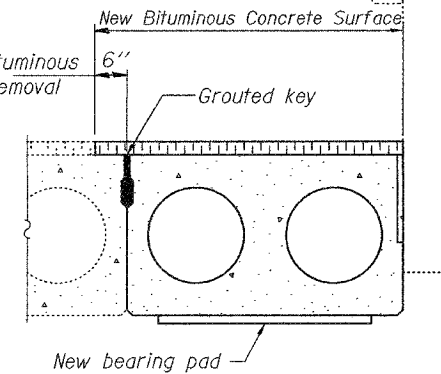
Contract Number: 88753



PARTIAL CROSS SECTION
(Span 4)

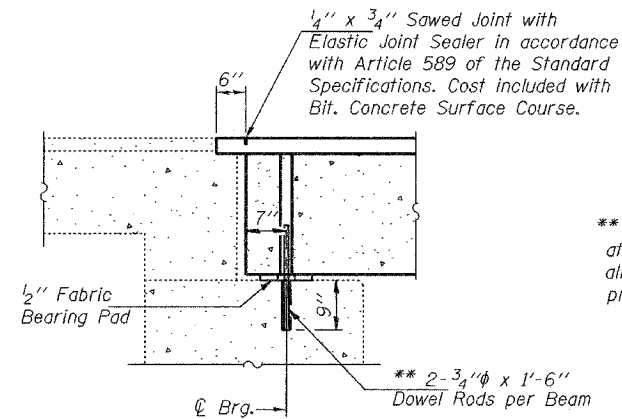


PARTIAL CROSS SECTION
(Spans 1, 3 & 5)



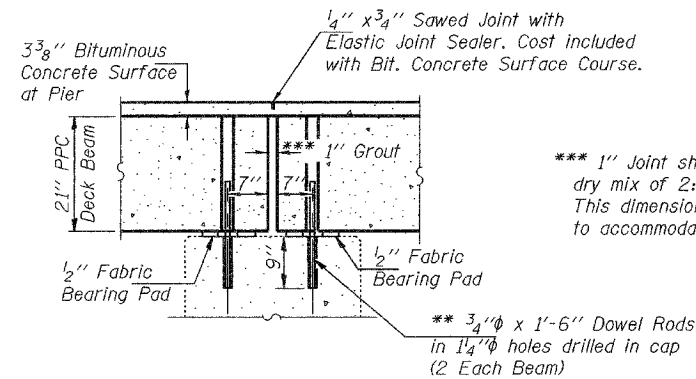
PARTIAL CROSS SECTION
(Spans 1, 2 & 8)

Existing handrail & posts to be removed, stored & reused.



TYPICAL SECTION AT ABUTMENTS

** Dowel Rods to be grouted after beams are in place and allowed to cure (Min. 24 hrs.) prior to grouting the shear keys.



TYPICAL SECTION AT PIERS

Existing Dowel Rods shall be cut off & ground flush with the top of the existing concrete. Cost included with Removal of Existing PPC Deck Beams. Proposed Dowel Rods shall be grouted after beams are in place and allowed to cure (Min. 24 hrs.) prior to grouting shear keys.

At expansion Piers 1, 3, and 7 grout rods into Pier cap and fill holes in beam with PAF-4.

*** 1" Joint shall be packed with a very dry mix of 2:1 sand and PC mortar. This dimension may vary plus or minus to accommodate tolerance in beam lengths.

DESIGNED	MJT
CHECKED	SJB
DRAWN	baliva
CHECKED	MJT SJB

MAY 17, 2005
EXAMINED *John A. Morris*
ENGINEER OF STRUCTURAL SERVICES
PASSED *Ralph E. Anderson*
ENGINEER OF BRIDGES AND STRUCTURES

REPAIR DETAILS
FAP RT. 315
FULTON COUNTY
SN 029-0004