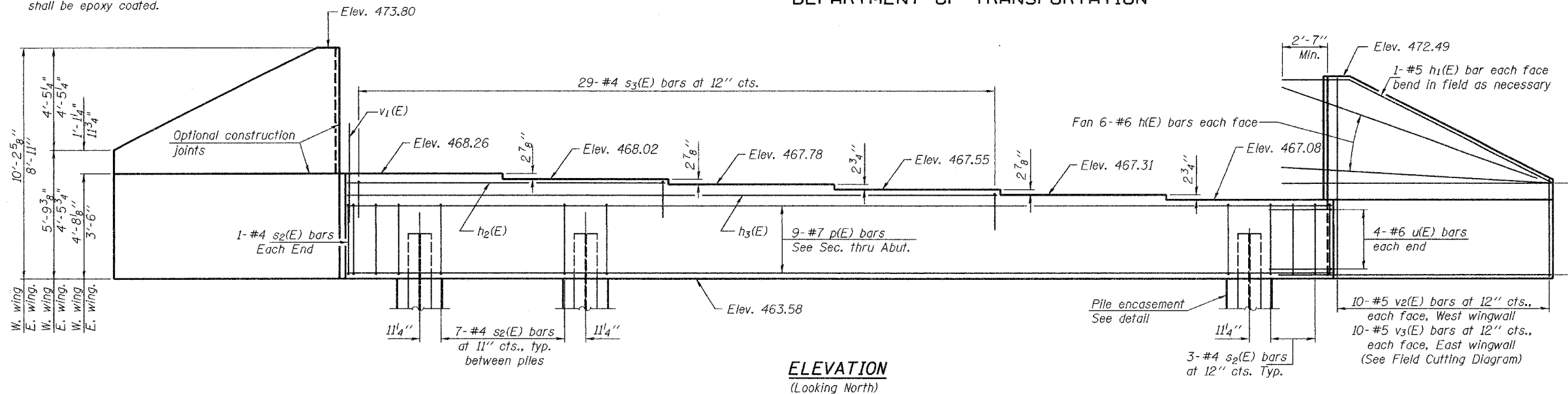


STATE OF ILLINOIS
DEPARTMENT OF TRANSPORTATION

ROUTE NO.	SECTION	COUNTY	SHEET	SHEET NO.
F.A.P. 315	18BRY-1)BR	FULTON	161	13
FED. ROAD DIST. NO. 7		ILLINOIS		FED. AID PROJECT-

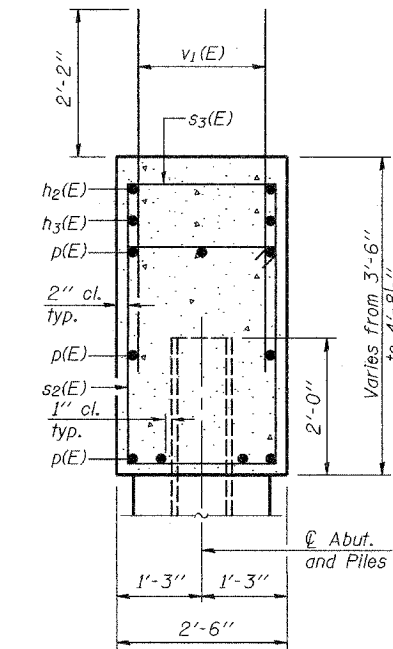
Contract #88753

Notes: Four steps monolithically with cap.
Reinforcement bars designated (E)
shall be epoxy coated.



ELEVATION
(Looking North)

8-#6 h(E) bars at 8" cts.
each face (West Wingwall)
7-#6 h(E) bars at 8" cts.
each face (East Wingwall)

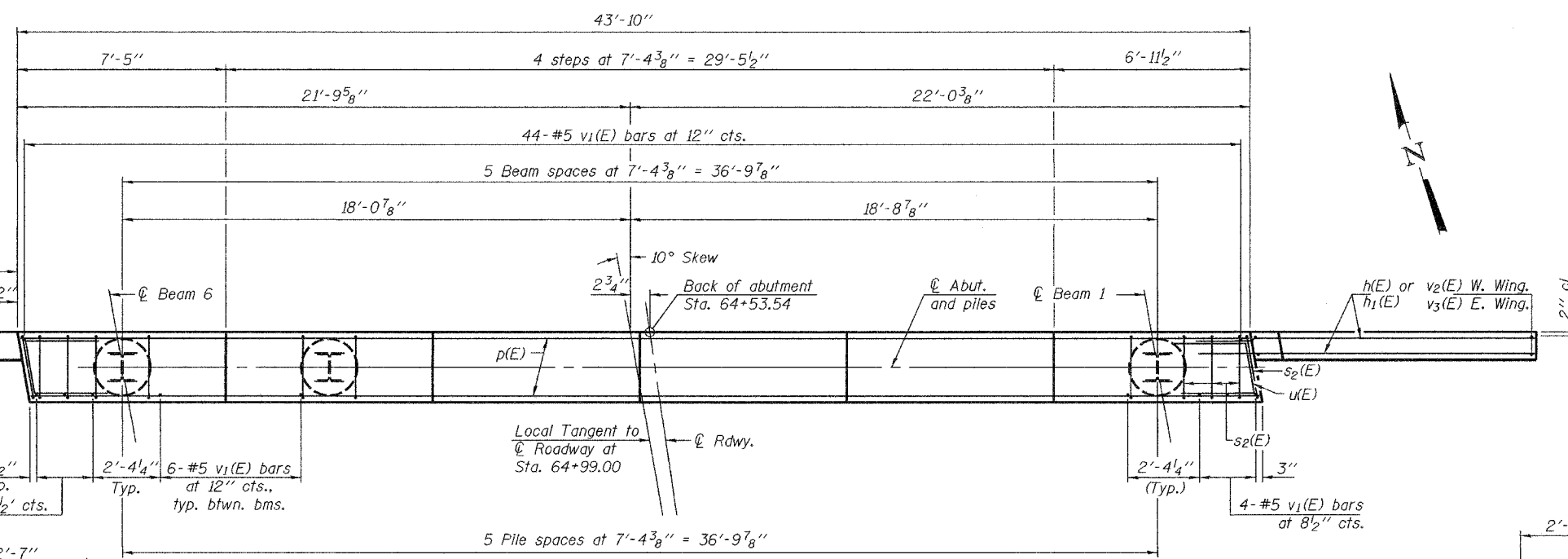


SEC. THRU ABUT.

PILE DATA

Type: HP 12x74
Capacity: Driven to refusal*
Est. Length: 75 ft.
No. Required: 5 + 1 test pile

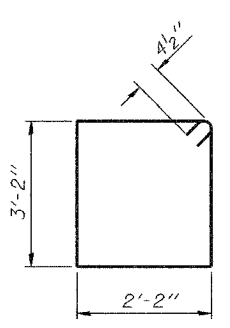
* The pile capacity has been reduced to account for 16 ton negative skin friction.



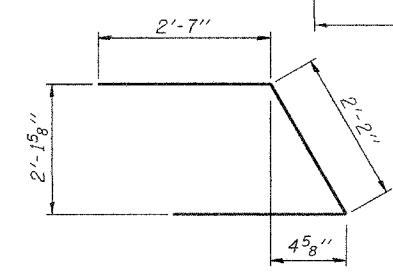
PLAN

BILL OF MATERIAL

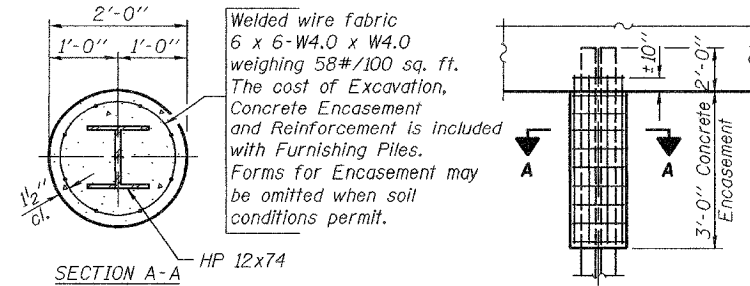
Bar	No.	Size	Length	Shape
h(E)	54	#6	13'-2"	
h1(E)	4	#5	13'-8"	
h2(E)	2	#4	14'-0"	
h3(E)	2	#4	28'-8"	
p(E)	9	#7	43'-6"	
s2(E)	43	#4	11'-5"	□
s3(E)	29	#4	6'-8"	□
u(E)	8	#6	7'-4"	∩
v1(E)	82	#5	4'-4"	
v2(E)	10	#5	15'-3"	
v3(E)	10	#5	12'-8"	
Concrete Structures		Cu. Yd.	22.2	
Reinforcement Bars, Epoxy Coated		Pound	3190	
Furnishing Steel Piles HP 12x74		Foot	375	
Driving Steel Piles HP 12x74		Foot	375	
Test Pile Steel HP 12x74		Each	1	
Structure Excavation		Cu. Yd.	44.5	



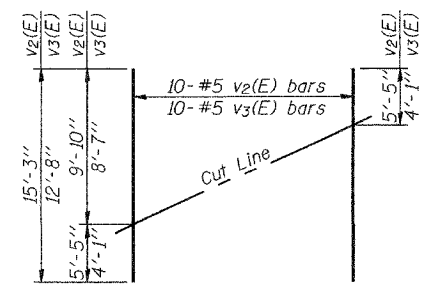
BARS s2(E)



BAR u(E)

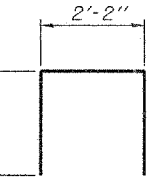


PILE ENCASEMENT DETAIL



FIELD CUTTING DIAGRAM

Order v2(E) and v3(E) bars full length. Cut as shown and use remainder of bars in opposite face.



BAR s3(E)

DESIGNED	Alan M. Johnson
CHECKED	Philip E. Copperrnoll
DRAWN	Michael B. Mossman
CHECKED	AMJ PEC

EXAMINED	April 25, 2005
PASSED	Thames D. Damagala
	Ralph E. Anderson

NORTH ABUTMENT
F.A.P. ROUTE 315 - SECTION (18BRY-1)BR
FULTON COUNTY
STATION 64+99.00
STRUCTURE NO. 029-0067