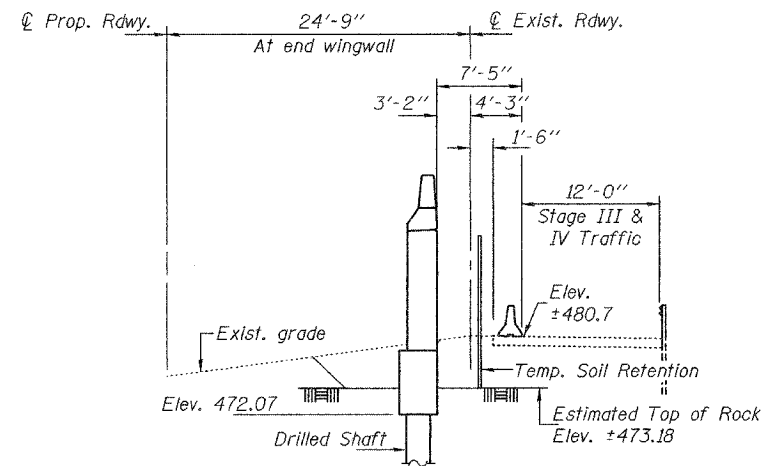


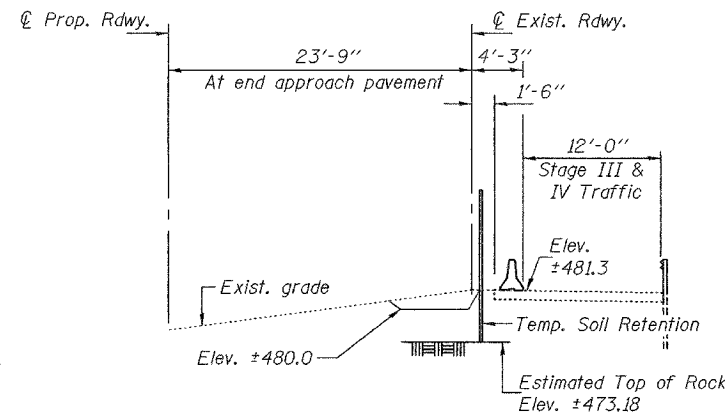
STATE OF ILLINOIS
DEPARTMENT OF TRANSPORTATION

ROUTE NO.	SECTION	COUNTY	TOTAL SHEETS	SHEET NO.
FAP 315	(18BRY-1)BR	FULTON	46	4
FED. ROAD DIST. NO. 7	ILLINOIS	FED. AID PROJECT-		

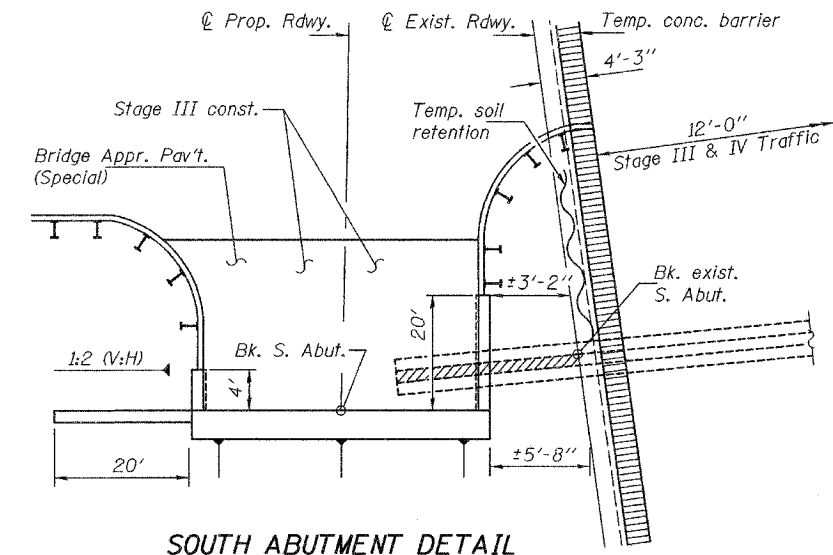
Contract #88753



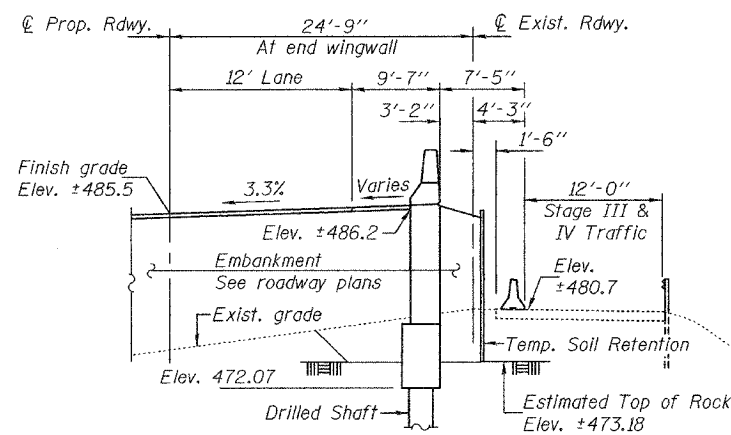
SECTION B-B
(Phase I Retention)
Dimensions at rt. L's to \mathcal{C} Rdwy.



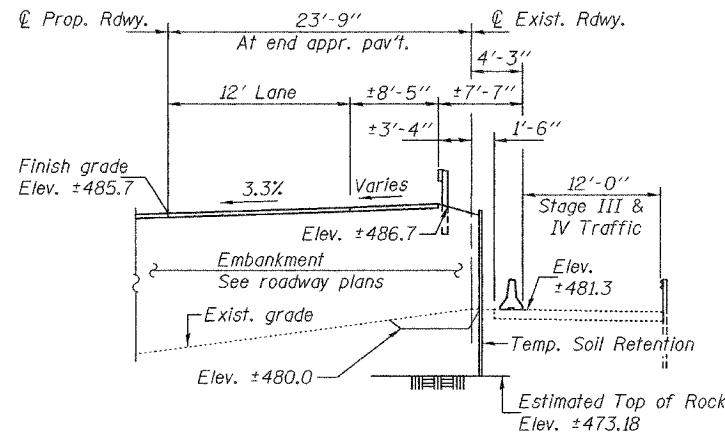
SECTION C-C
(Phase I Retention)
Dimensions at rt. L's to \mathcal{C} Rdwy.



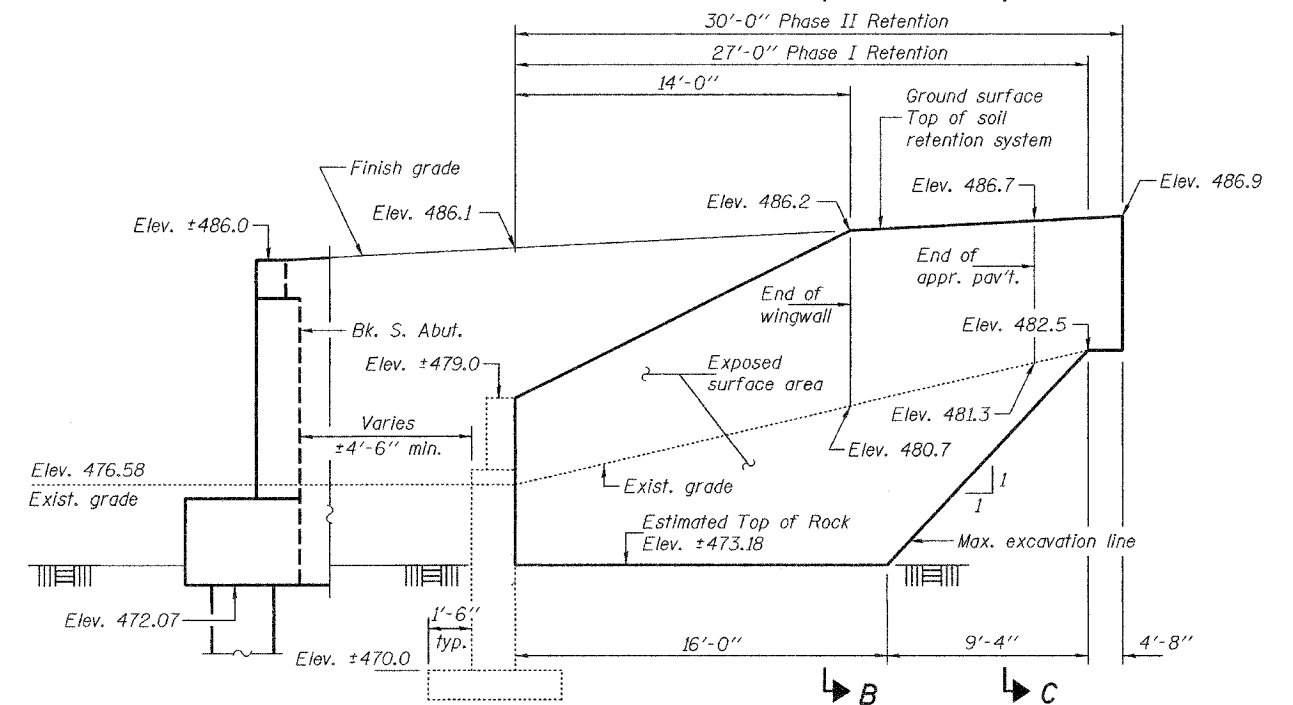
SOUTH ABUTMENT DETAIL



SECTION B-B
(Phase II Retention)
Dimensions at rt. L's to \mathcal{C} Rdwy.



SECTION C-C
(Phase II Retention)
Dimensions at rt. L's to \mathcal{C} Rdwy.



TEMPORARY SOIL RETENTION SYSTEM
At South Abutment

Notes: A cantilevered sheet piling design does not appear feasible and additional members or other retention systems may be necessary. The Contractor shall submit a temporary soil retention system design including plan details and calculations for review and acceptance by the Engineer.
Phase I Retention is to support face of excavation during construction of south abutment cap and west wing wall.
Phase II Retention is to support embankment during backfilling behind abutment and construction of Bridge Approach Pavement (Special).

BILL OF MATERIAL

Item	Unit	Total
Temporary Soil Retention System	Sq. Ft.	261.0

DESIGNED	RJC
CHECKED	SMR
DRAWN	h.t. parsons
CHECKED	RJC/SMR

May 16, 2005
EXAMINED *Thomas J. Donagale*
PASSED *Ralph E. Anderson*
ENGINEER OF BRIDGES AND STRUCTURES

TEMPORARY SOIL RETENTION SYSTEM
F.A.P. RTE. 315 - SEC. (18BRY-1)BR
FULTON COUNTY
STATION 74+09.00
STRUCTURE NO. 029-0068