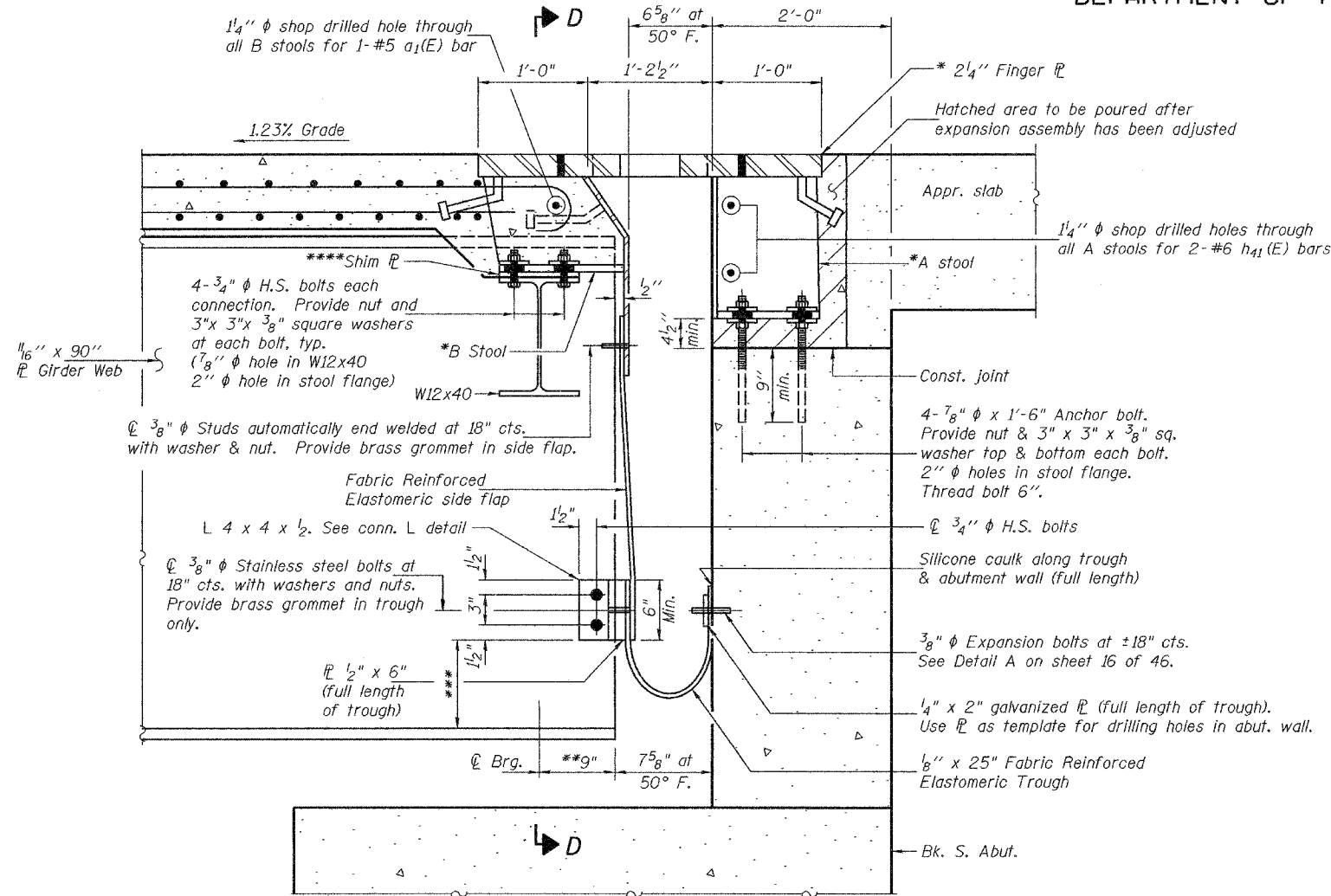


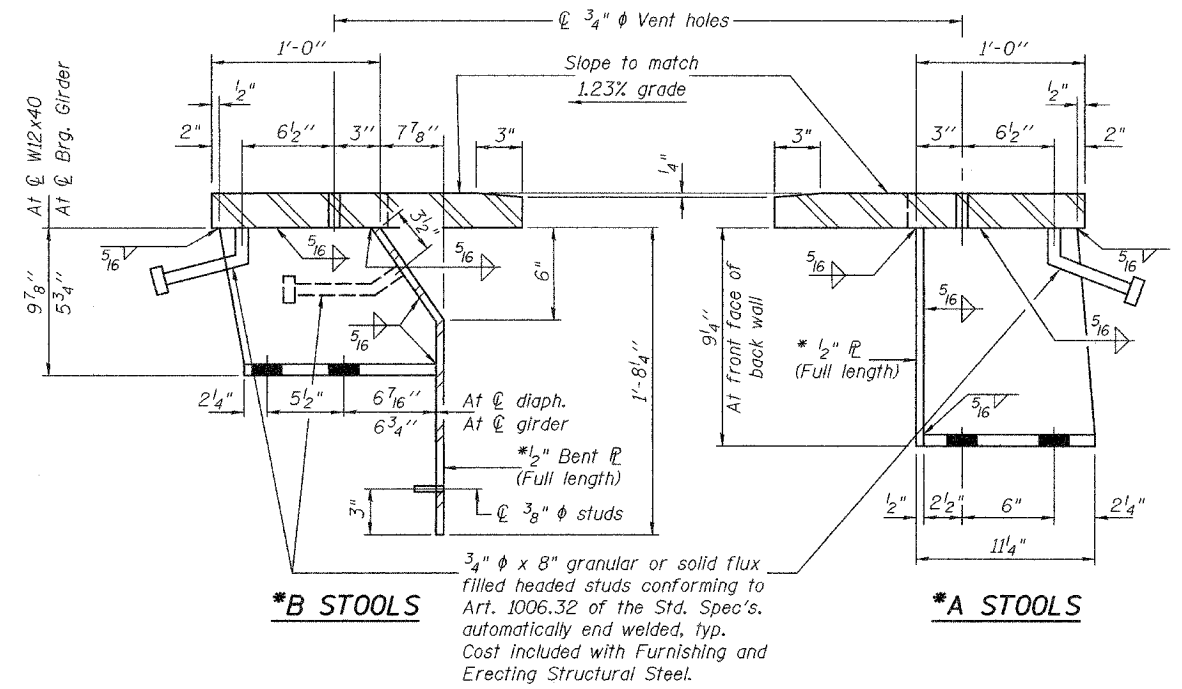
STATE OF ILLINOIS
DEPARTMENT OF TRANSPORTATION

ROUTE NO.	SECTION	COUNTY	TOTAL SHEETS	SHEET	SHEET NO. 15 46 SHEETS
FAP 315	(18BRY-1)BR	FULTON		119	
FED. ROAD DIST. NO. 7	ILLINOIS	FED. AID PROJECT-			

Contract #88753

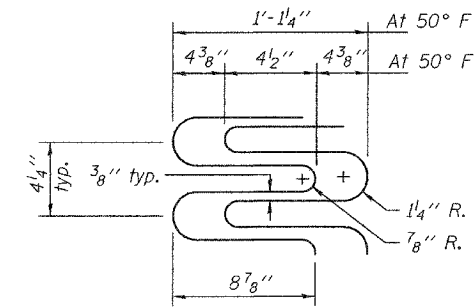


SECTION C-C

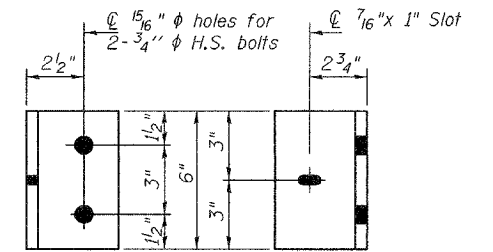


*B STOOLS

*A STOOLS



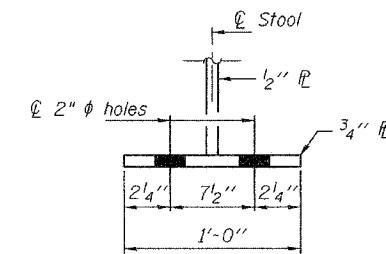
FINGER DETAILS



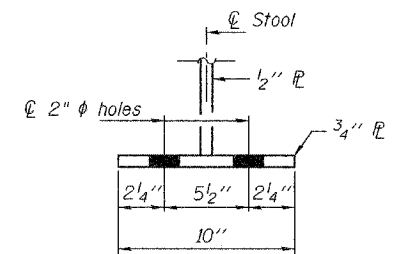
TYPICAL CONNECTION

ANGLE DETAILS

L 4" x 4" x 1/2" x 6"



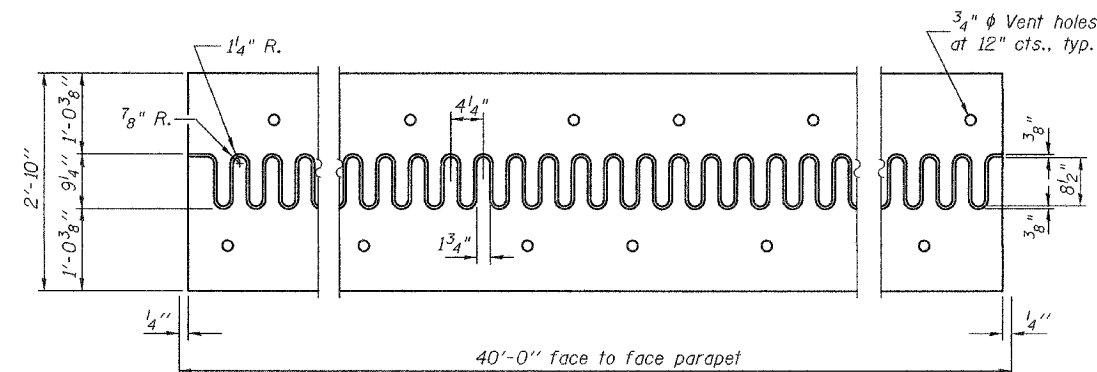
*A STOOL SECTION



*B STOOL SECTION

- * Plates shall be AASHTO M 270, Grade 50.
- ** Measured along \bar{C} girder.
- *** Varies from 4" at Girder 1 to 2'-1 3/4" at Girder 6. See Section B-B on sheet 14 of 46.
- **** Provide 1/4" normal shim, plus one 1/8" shim and one 1/16" shim for height adjustment. Tapered shims shall be added under the stools as required by the Engineer to make a smooth finger joint. Cost shall be included with Furnishing and Erecting Structural Steel.

Note: See sheet 16 of 46 for Section D-D.



FLAME CUTTING DIAGRAM

Cut from * \bar{C} 2 1/4" x 2'-10" x 39'-11 1/2" (AASHTO M270, Gr. 50)

DESIGNED	RJC/DPN
CHECKED	FT
DRAWN	h.t. parsons
CHECKED	RJC/FT

EXAMINED	Thomas J. Demagala ENGINEER OF BRIDGE DESIGN
PASSED	Ralph E. Anderson ENGINEER OF BRIDGES AND STRUCTURES

May 16, 2005

SOUTH ABUTMENT JOINT DETAILS
F.A.P. RTE. 315 - SEC. (18BRY-1)BR
FULTON COUNTY
STATION 74+09.000
STRUCTURE NO. 029-0068