

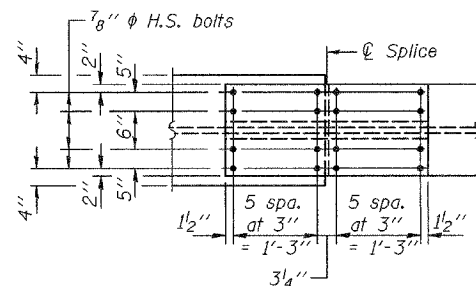
STATE OF ILLINOIS
DEPARTMENT OF TRANSPORTATION

ROUTE NO.	SECTION	COUNTY	DATE	SHEET
FAP 315	(18BRY-1)BR	FULTON		186
FED. ROAD DIST. NO. 7	ILLINOIS	FED. AID PROJECT-		

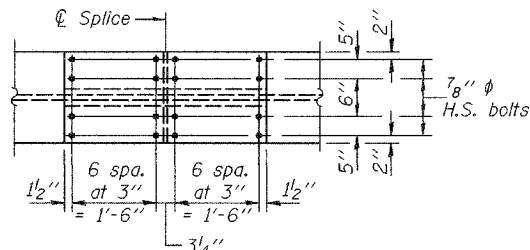
Contract #88753

SHEET NO. 22

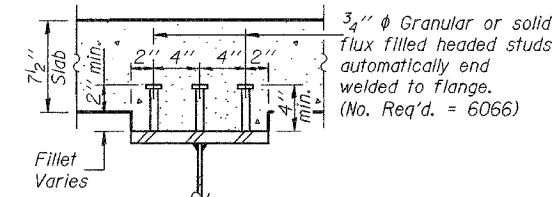
46 SHEETS



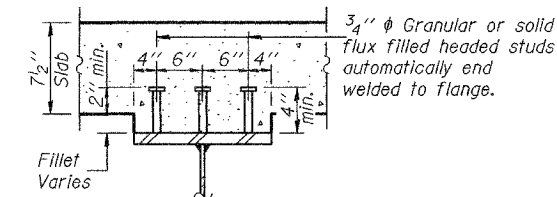
PLAN - SPLICE 6
(Top flange)



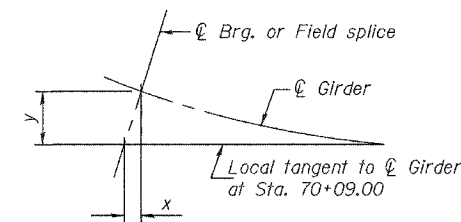
PLAN - SPLICE 7
(Top flange)



SECTION A-A

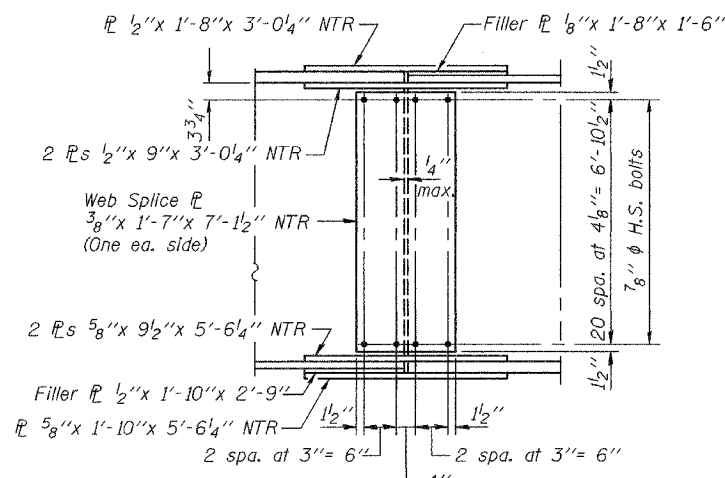


SECTION B-B

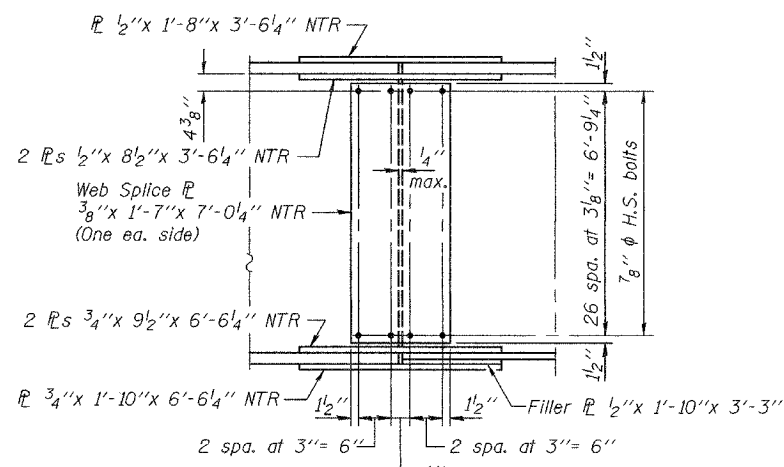


OFFSET SKETCH

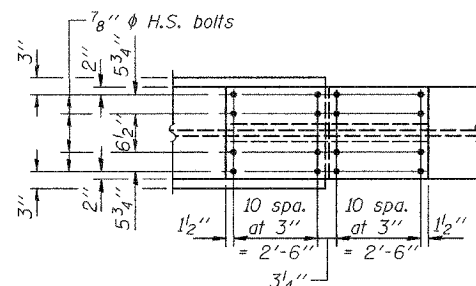
See table for x and y dimensions.
All y dimensions are given perpendicular to the local tangent.
All x dimensions are given parallel to the local tangent



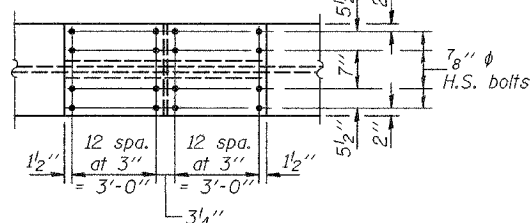
ELEVATION - SPLICE 6



ELEVATION - SPLICE 7



PLAN - SPLICE 6
(Bottom flange)



PLAN - SPLICE 7
(Bottom flange)

OFFSET DIMENSIONS

Location	C Brg. N. Abut.		C Splice 1		C Brg. Pier 1		C Splice 2		C Splice 3		C Brg. Pier 2		C Splice 4		C Splice 5		C Brg. Pier 3		C Splice 6		C Splice 7		C Brg. S. Abut.	
	x	y	x	y	x	y	x	y	x	y	x	y	x	y	x	y	x	y	x	y	x	y	x	y
Girder 1	1'-0 7/8"	13'-8 7/8"	4 7/8"	7'-2 7/8"	3 1/8"	5'-6 3/8"	2 1/8"	4'-1 7/8"	1/4"	1'-0 1/2"	0	6"	0	1 7/8"	0	4 1/4"	1/2"	1'-7 1/2"	1 3/8"	3'-1 3/4"	8 1/8"	10'-1 1/4"	1'-0 7/8"	13'-8 3/4"
Girder 2	1'-0 7/8"	13'-9 1/8"	4 7/8"	7'-2 1/4"	3 1/8"	5'-6 1/2"	2 1/8"	4'-2"	1/4"	1'-0 5/8"	0	6 1/8"	0	1 7/8"	0	4 1/8"	1/2"	1'-7 1/2"	1 3/8"	3'-1 7/8"	8 1/8"	10'-1 1/2"	1'-0 7/8"	13'-9"
Girder 3	1'-0 7/8"	13'-9 1/2"	4 7/8"	7'-2 3/8"	3 1/8"	5'-6 1/2"	2 1/8"	4'-2"	1/4"	1'-0 5/8"	0	6 1/8"	0	1 7/8"	0	4 1/4"	1/2"	1'-7 5/8"	1 3/8"	3'-1 7/8"	8 1/8"	10'-1 3/4"	1'-0 7/8"	13'-9 1/4"
Girder 4	1'-0 7/8"	13'-9 3/4"	4 7/8"	7'-2 1/2"	3 1/8"	5'-6 1/2"	2 1/8"	4'-2 1/8"	1/4"	1'-0 5/8"	0	6 1/8"	0	1 7/8"	0	4 3/8"	1/2"	1'-7 5/8"	1 3/8"	3'-2"	8 1/8"	10'-1 7/8"	1'-0 7/8"	13'-9 1/2"
Girder 5	1'-1"	13'-10"	4 7/8"	7'-2 5/8"	3 1/4"	5'-6 3/4"	2 1/8"	4'-2 1/4"	1/4"	1'-0 5/8"	0	6 1/8"	0	1 7/8"	0	4 3/8"	1/2"	1'-7 5/8"	1 3/8"	3'-2"	8 1/8"	10'-2 1/8"	1'-0 7/8"	13'-9 3/4"
Girder 6	1'-1"	13'-10 1/4"	4 7/8"	7'-2 3/4"	3 1/4"	5'-6 1/8"	2 1/8"	4'-2 1/4"	1/4"	1'-0 5/8"	0	6 1/8"	0	1 7/8"	0	4 3/8"	1/2"	1'-7 5/8"	1 3/8"	3'-2 1/8"	8 1/8"	10'-2 1/4"	1'-0 7/8"	13'-10"

DESIGNED	MJT
CHECKED	FT
DRAWN	h.t. parsons
CHECKED	MJT/FT

May 16, 2005
 EXAMINED *Thomas J. Damagala*
 PASSED *Ralph E. Anderson*

Notes: "NTR" denotes plates to which notch toughness requirements are applicable.
All splice plates shall be AASHTO M 270, Grade 50.

STRUCTURAL STEEL DETAILS
 F.A.P. RTE. 315 - SEC. (18BRY-1)BR
 FULTON COUNTY
 STATION 74+09.000
 STRUCTURE NO. 029-0068