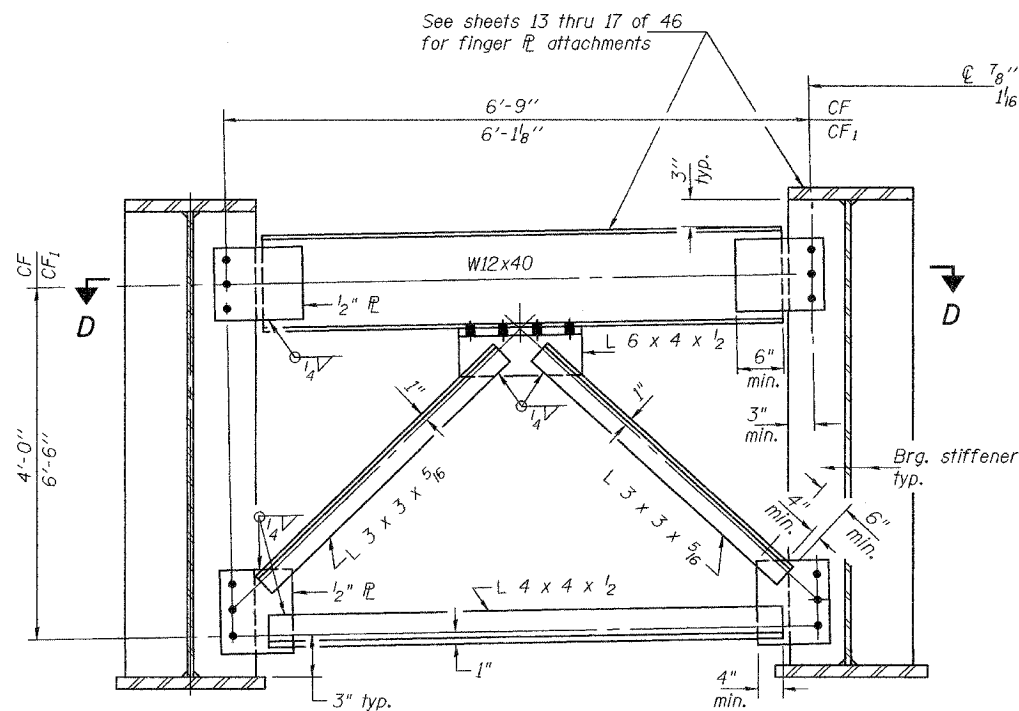


STATE OF ILLINOIS
DEPARTMENT OF TRANSPORTATION

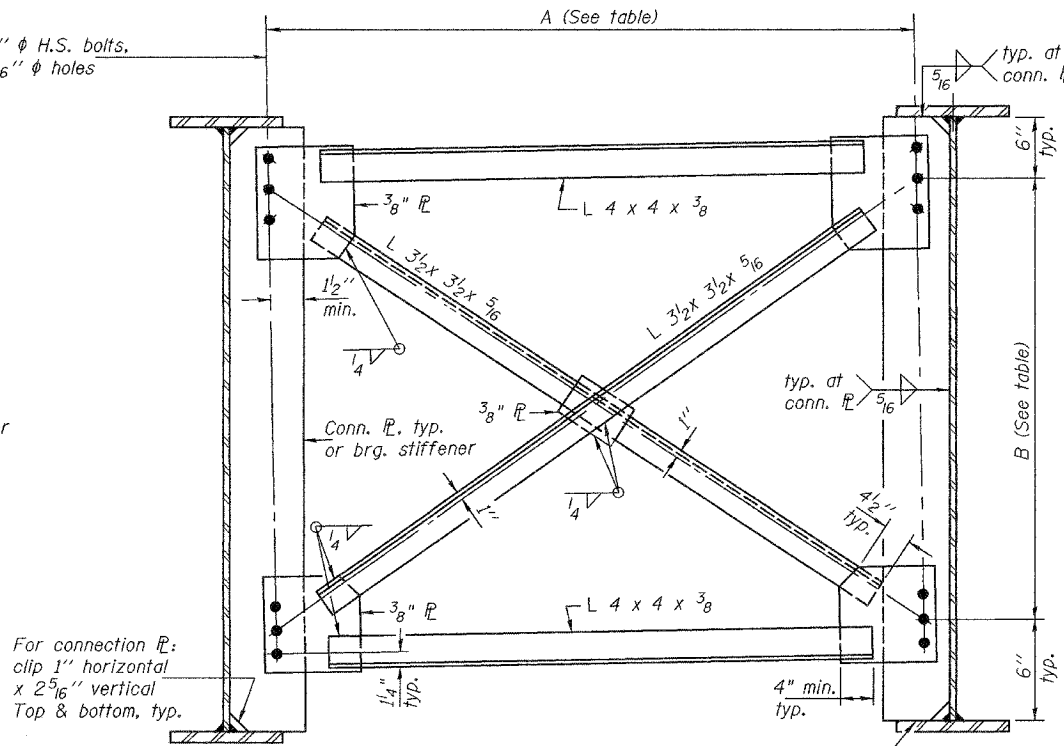
ROUTE NO.	SECTION	COUNTY	SHEET NO.	SHEET
FAP 315	(18BRY-1)BR	FULTON	187	46 SHEETS
FED. ROAD DIST. NO. 7	ILLINOIS	FED. AID PROJECT -		

Contract #88753



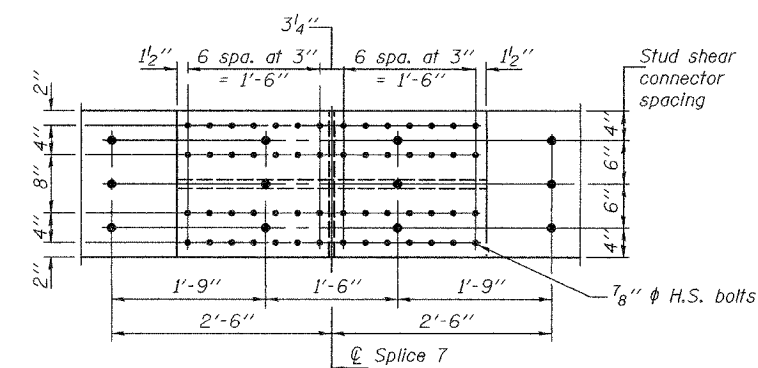
CROSS FRAMES CF & CF₁

CF (5 required)
CF₁ (5 required)

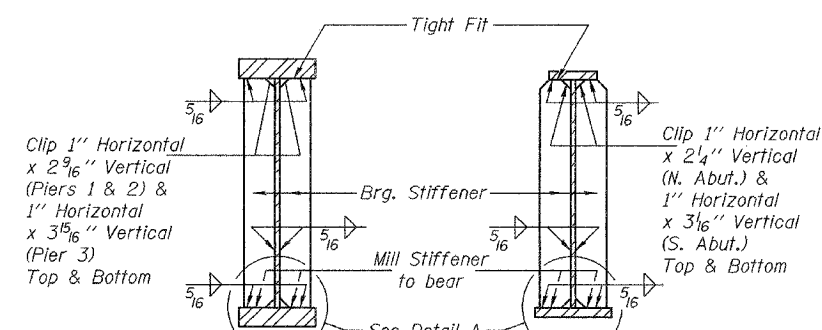


CROSS FRAMES CF₂, CF₃, CF₄ & CF₅

CF₂ (100 required)
CF₃ (10 required)
CF₄ (5 required)
CF₅ (80 required)



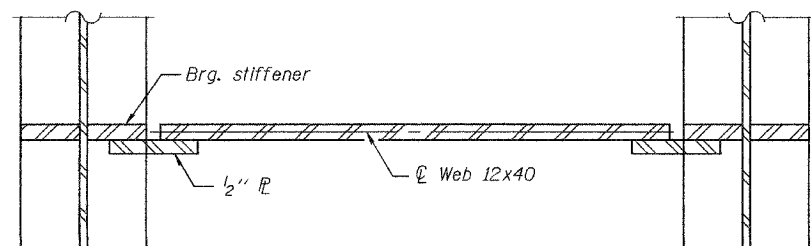
VIEW C-C
Shear studs over Splice 7



SECTION AT PIER

SECTION AT ABUTMENT

BEARING STIFFENER DETAILS



SECTION D-D

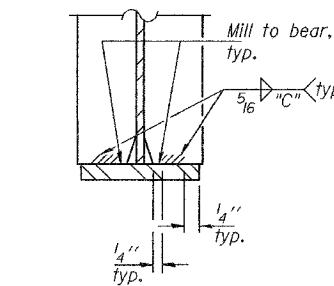
TABLE OF "A" & "B" DIMENSIONS

	A	B
CF ₂	6'-9 1/2"	4'-0"
CF ₃	6'-2 1/4"	4'-0"
CF ₄	6'-0"	6'-6"
CF ₅	6'-9 3/8"	6'-6"

TABLE OF "C" DIMENSION

	"C"
N. Abut.	4 1/4"
Pier 1	9 1/8"
Pier 2	9 1/8"
Pier 3	10 1/8"
S. Abut.	8 1/8"

Notes: "NTR" denotes elements to which notch toughness requirements are applicable.
All bearing stiffeners, connection plates, R's, angles, and W12x40 members shall be AASHTO M 270, Grade 50.
Two hardened washers shall be required over all oversized holes.



DETAIL A
See table for "C" dimension

DESIGNED	MJT
CHECKED	FT
DRAWN	h.t. parsons
CHECKED	MJT/FT

May 16, 2005
EXAMINED *Thomas J. Demagala*
PASSED *Ralph E. Anderson*
ENGINEER OF BRIDGES AND STRUCTURES

STRUCTURAL STEEL DETAILS
F.A.P. RTE. 315 - SEC. (18BRY-1)BR
FULTON COUNTY
STATION 74+09.000
STRUCTURE NO. 029-0068