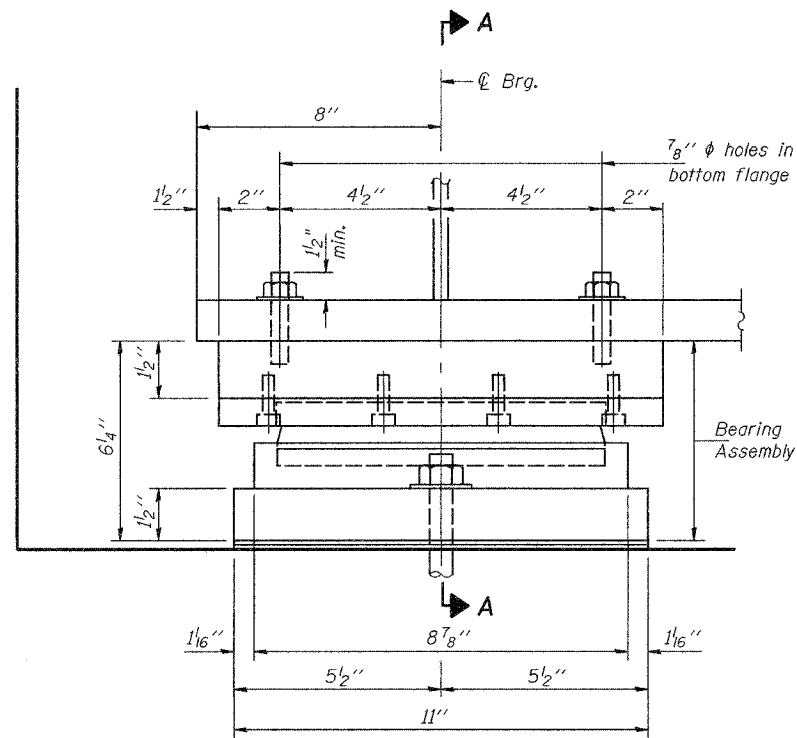


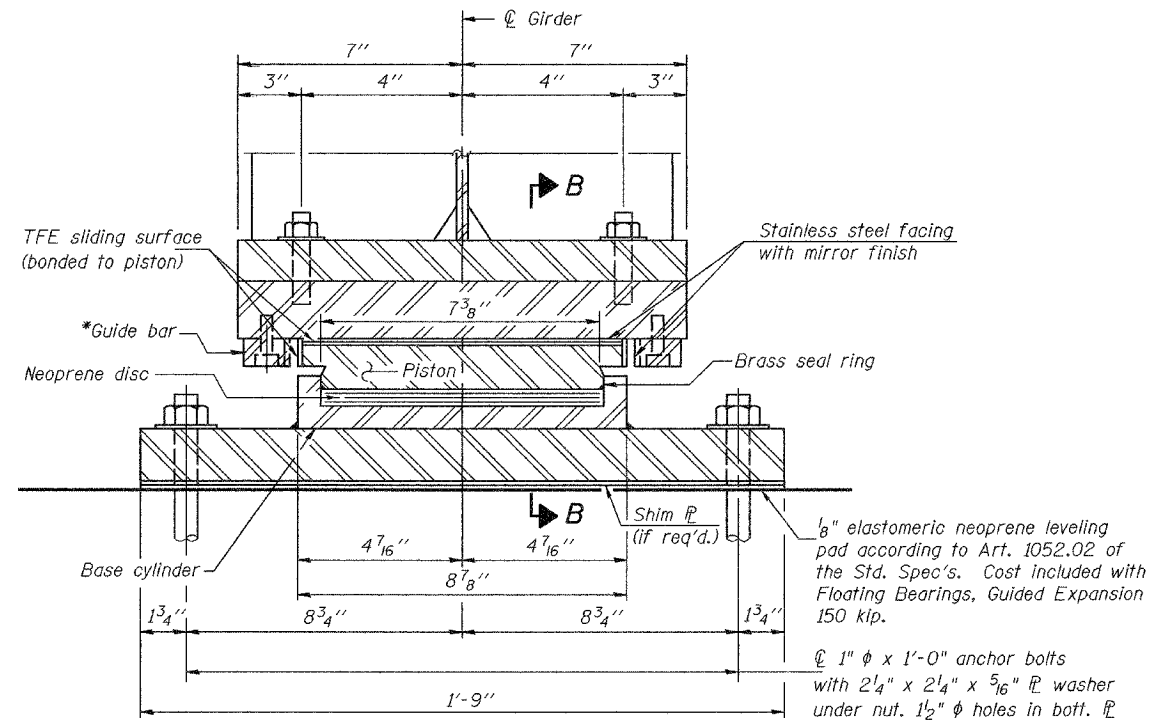
STATE OF ILLINOIS
DEPARTMENT OF TRANSPORTATION

ROUTE NO.	SECTION	COUNTY	TOTAL SHEETS	SHEET NO.
FAP 315	(18BRY-1)BR	FULTON	46	25
FED. ROAD DIST. NO. 7	ILLINOIS	FED. AID PROJECT-		

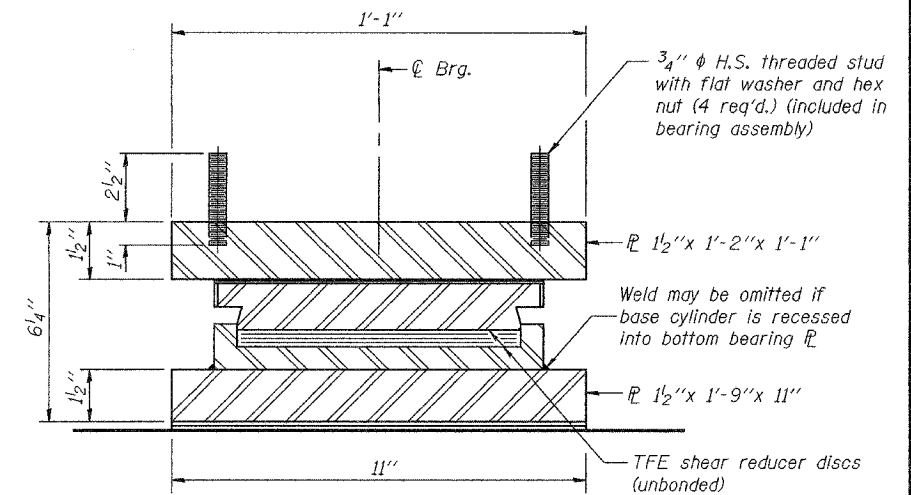
Contract #88753



ELEVATION AT N. ABUT.



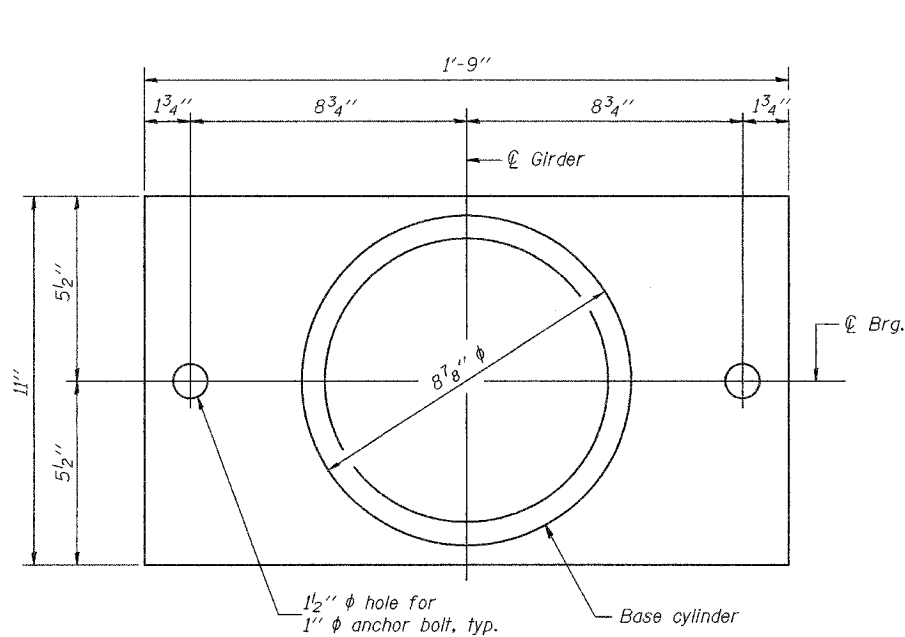
SECTION A-A



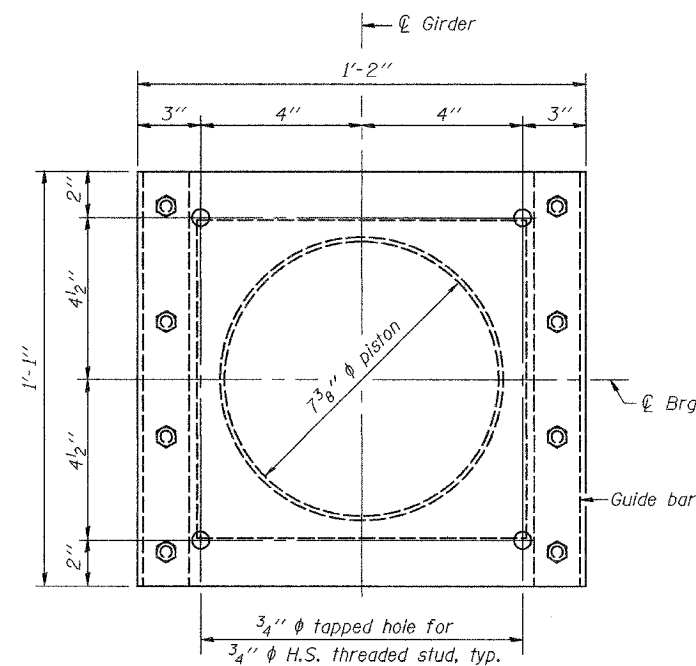
SECTION B-B
(Guide bar omitted for clarity.)

GUIDED EXPANSION FLOATING BEARING

*As alternates to the bolted connection shown, the guide bars may be connected to the top bearing plate by groove welds or the guide bars and top bearing plate may be fabricated as a single piece.



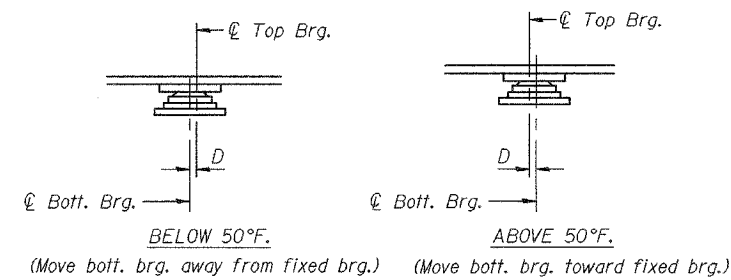
BOTTOM BEARING AND BASE CYLINDER PLAN



TOP BEARING AND PISTON PLAN

BEARING DATA	
Vertical design load	123 kip
Total required movement	3 5/8"

Notes: The plates of the Bearing Assembly shall be AASHTO M270, Grade 50.
For anchor bolt installation details, see sheet 30 of 46.



SETTING ANCHOR BOLTS AT EXP. BRG.

D = 1/8" per each 100' of expansion for every 15° temp. change from the normal temp. of 50°F.

BILL OF MATERIAL

Item	Unit	Total
Floating Bearings, Guided Expansion 150 kip	Each	6

BEARING DETAILS - N. ABUT.
F.A.P. RTE. 315 - SEC. (18BRY-1)BR
FULTON COUNTY
STATION 74+09.000
STRUCTURE NO. 029-0068

DESIGNED	MJT
CHECKED	DPN
DRAWN	h.t. parsons
CHECKED	MJT/DPN

May 16, 2005
EXAMINED *Thomas J. Demagala*
PASSED *Ralph E. Anderson*
ENGINEER OF BRIDGES AND STRUCTURES