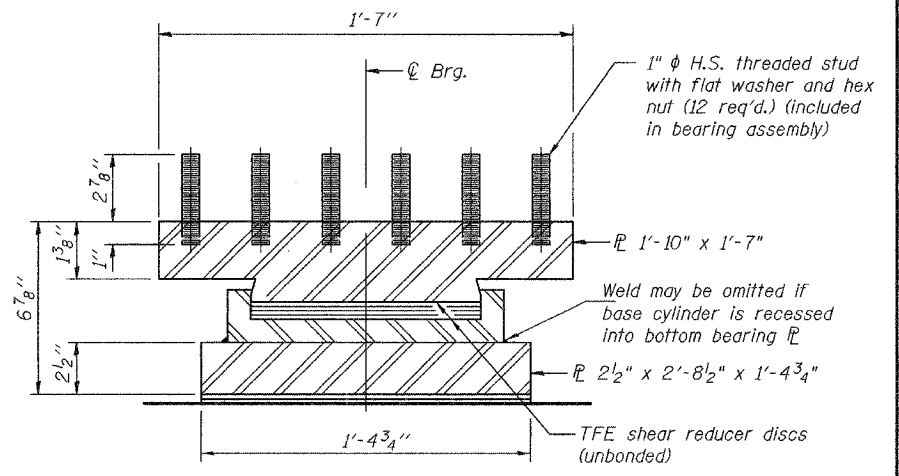
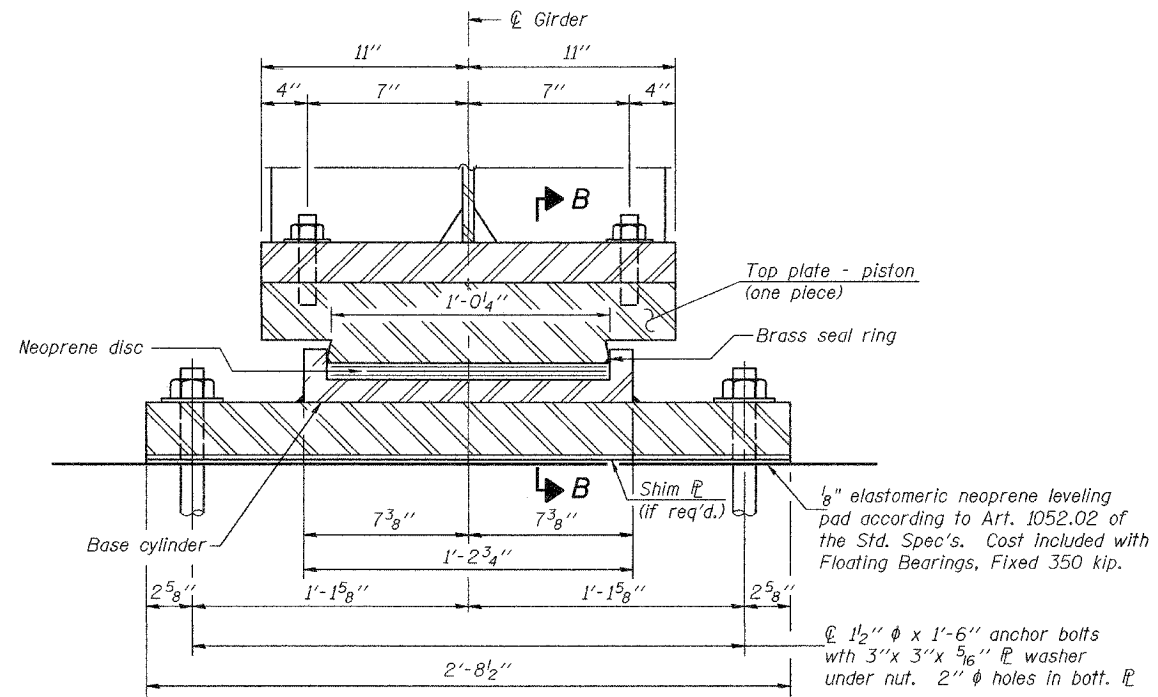
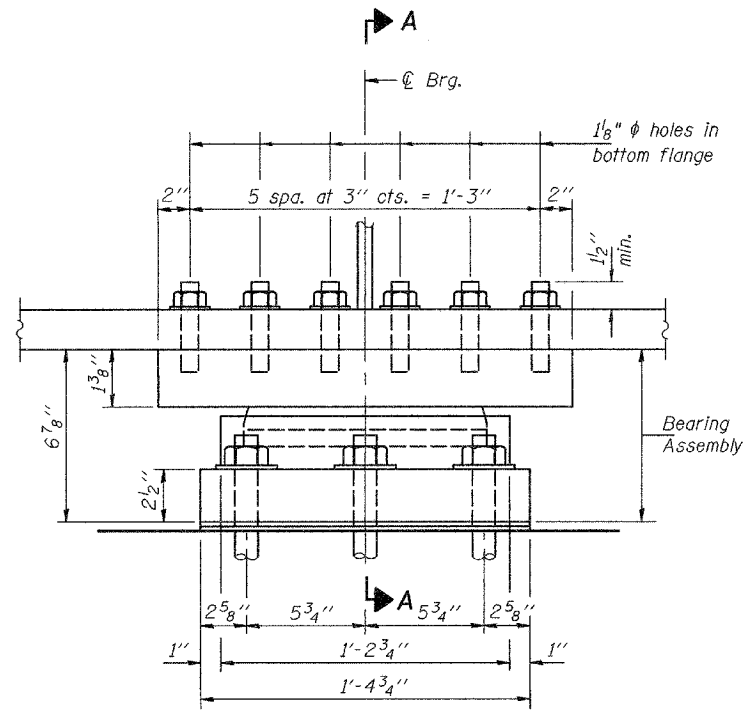


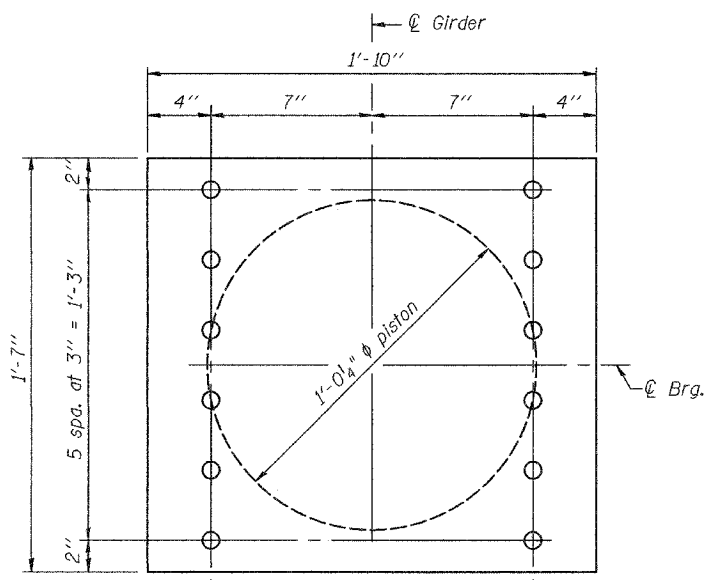
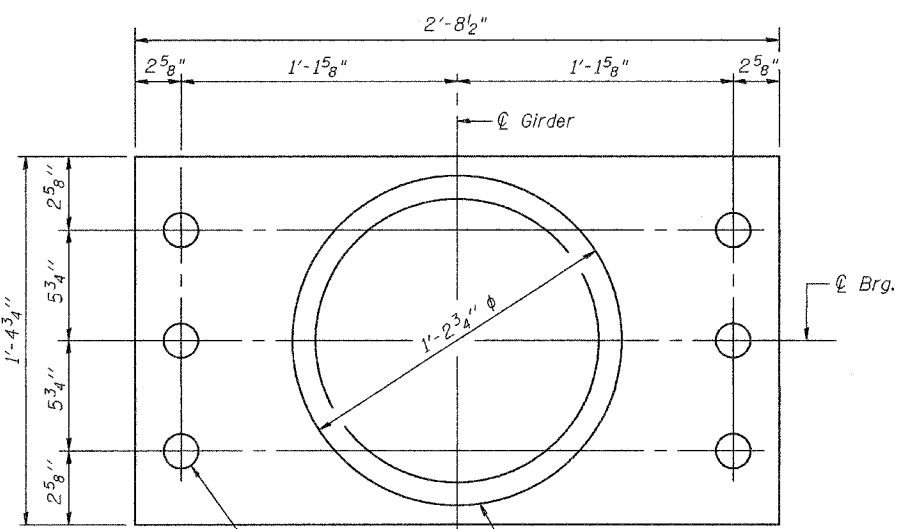
STATE OF ILLINOIS  
DEPARTMENT OF TRANSPORTATION

ROUTE NO.	SECTION	COUNTY	DATE	SHEET NO.
FAP 315	(18BRY-1)BR	FULTON		19/1
FED. ROAD DIST. NO. 7	ILLINOIS	FED. AID PROJECT		

SHEET NO. 27  
46 SHEETS  
Contract #88753



FIXED FLOATING BEARING



Notes: The plates of the Bearing Assembly shall be AASHTO M270, Grade 50.  
For anchor bolt installation details, see sheet 30 of 46.

BEARING DATA	
Vertical design load	340 kip
Lateral design load	238 kip

BILL OF MATERIAL		
Item	Unit	Total
Floating Bearings, Fixed - 350 kip	Each	6

DESIGNED	MJT
CHECKED	DPN
DRAWN	h.t. parsons
CHECKED	MJT/DPN

May 16, 2005  
EXAMINED *Thomas J. Domagala*  
ENGINEER OF BRIDGE DESIGN  
PASSED *Ralph E. Anderson*  
ENGINEER OF BRIDGES AND STRUCTURES

BEARING DETAILS - PIER 2  
F.A.P. RTE. 315 - SEC. (18BRY-1)BR  
FULTON COUNTY  
STATION 74+09.000  
STRUCTURE NO. 029-0068