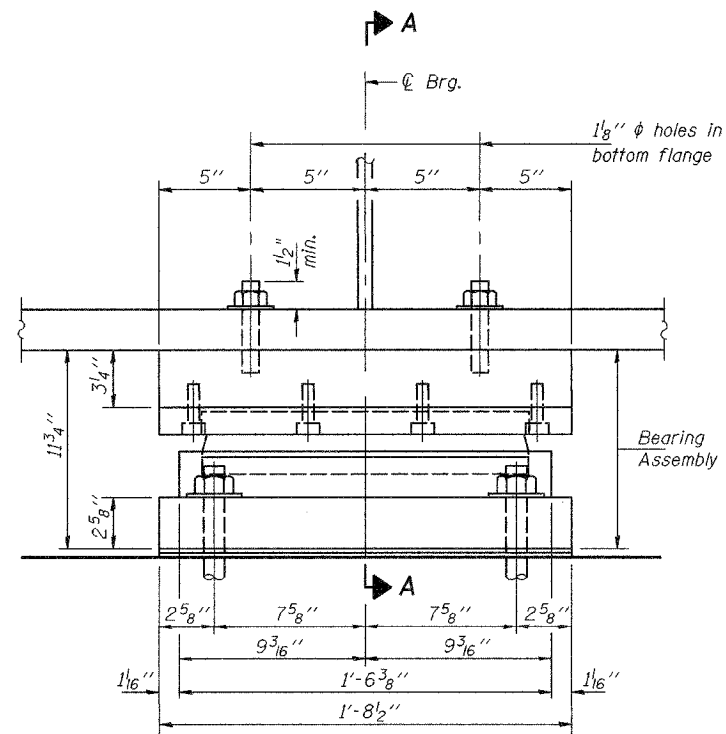
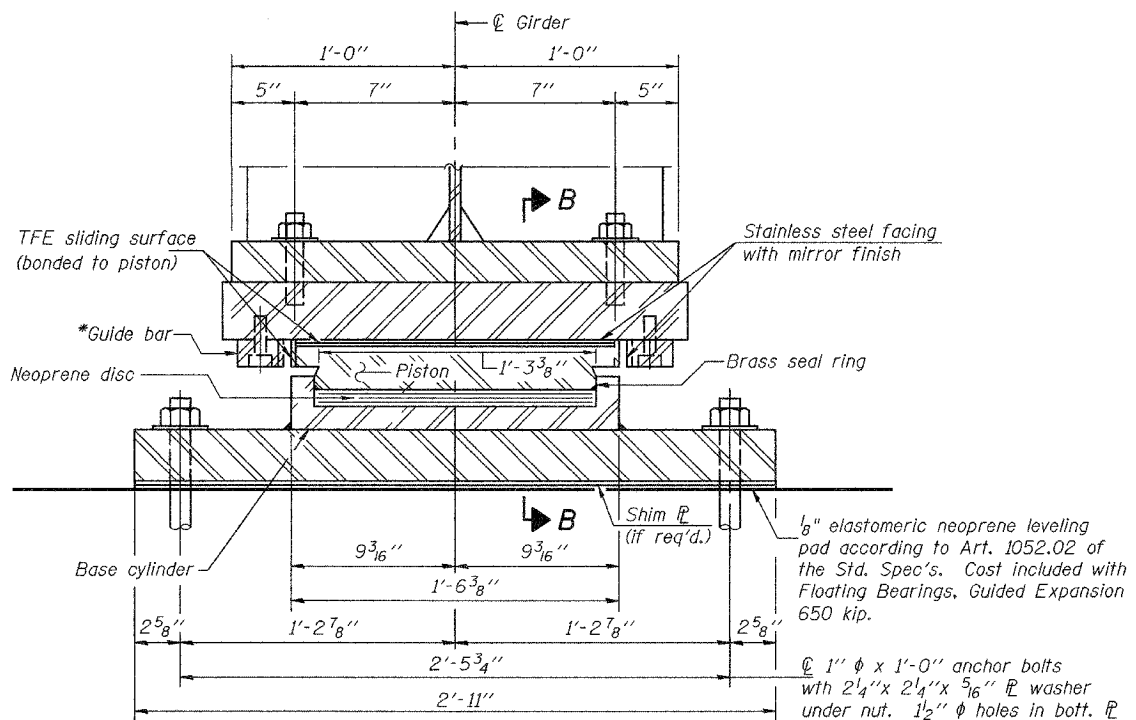


STATE OF ILLINOIS  
DEPARTMENT OF TRANSPORTATION

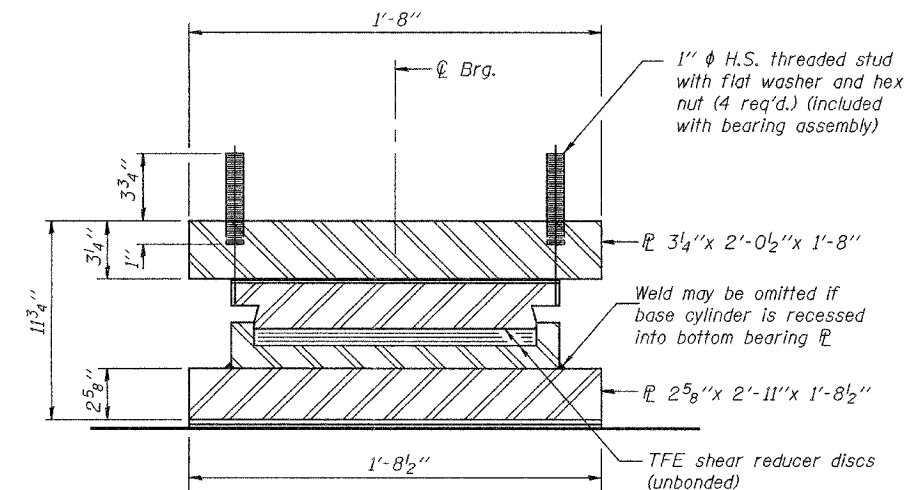
ROUTE NO.	SECTION	COUNTY	BRIDGE	SHEET	SHEET NO. 28 46 SHEETS
FAP 315	(18BRY-1)BR	FULTON		192	
FED. ROAD DIST. NO. 7	BRIDGES	FED. AID PROJECT-	Contract #88753		



ELEVATION AT PIER 3



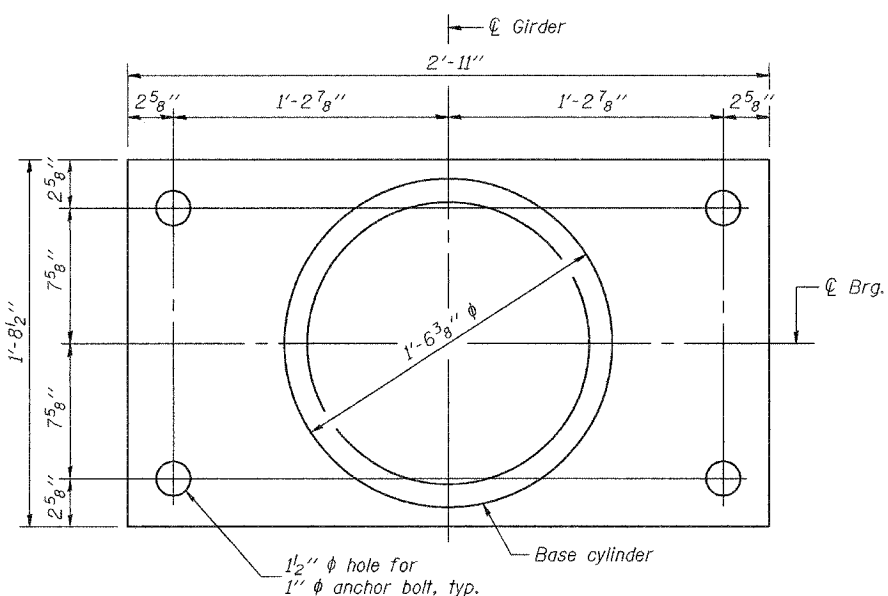
SECTION A-A



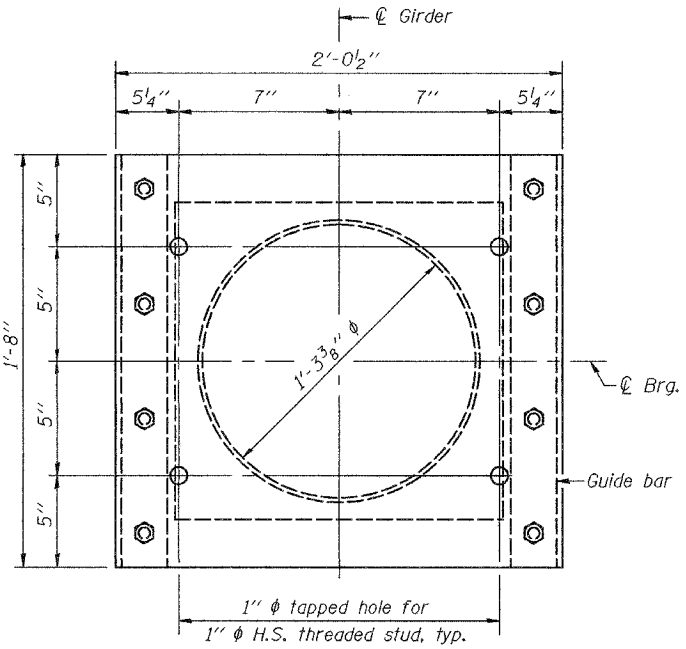
SECTION B-B  
(Guide bar omitted for clarity.)

GUIDED EXPANSION FLOATING BEARING

\*As alternates to the bolted connection shown, the guide bars may be connected to the top bearing plate by groove welds or the guide bars and top bearing plate may be fabricated as a single piece.



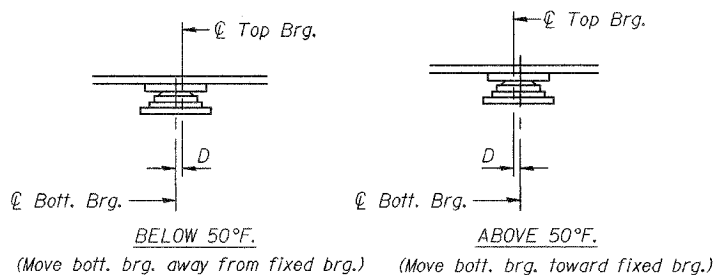
BOTTOM BEARING  $\varnothing$  AND BASE CYLINDER PLAN



TOP BEARING  $\varnothing$  AND PISTON PLAN

BEARING DATA	
Vertical design load	609 kip
Total required movement	2 $\frac{1}{2}"$

Notes: The plates of the Bearing Assembly shall be AASHTO M270, Grade 50.  
For anchor bolt installation details, see sheet 30 of 46.



SETTING ANCHOR BOLTS AT EXP. BRG.  
 $D = \frac{1}{8}"$  per each 100' of expansion for every 15° temp. change from the normal temp. of 50°F.

BILL OF MATERIAL

Item	Unit	Total
Floating Bearings, Guided Expansion 650 kip	Each	6

BEARING DETAILS - PIER 3  
F.A.P. RTE. 315 - SEC. (18BRY-1)BR  
FULTON COUNTY  
STATION 74+09.000  
STRUCTURE NO. 029-0068

DESIGNED	MJT	May 16, 2005
CHECKED	DPN	EXAMINED <i>Thomas J. Domagala</i> ENGINEER OF BRIDGE DESIGN
DRAWN	h.f. parsons	PASSED <i>Ralph E. Anderson</i> ENGINEER OF BRIDGES AND STRUCTURES
CHECKED	MJT/DPN	