

STATE OF ILLINOIS
DEPARTMENT OF TRANSPORTATION

ROUTE NO.	SECTION	COUNTY	SHEET	SHEET NO. 32
FAP 315	(18BRY-1)BR	FULTON	196	46 SHEETS
FED. ROAD DIST. NO. 7	ILLINOIS	FED. AID PROJECT-		

Contract #88753

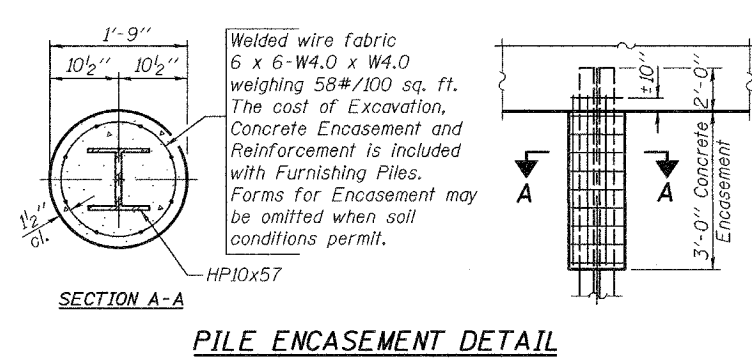
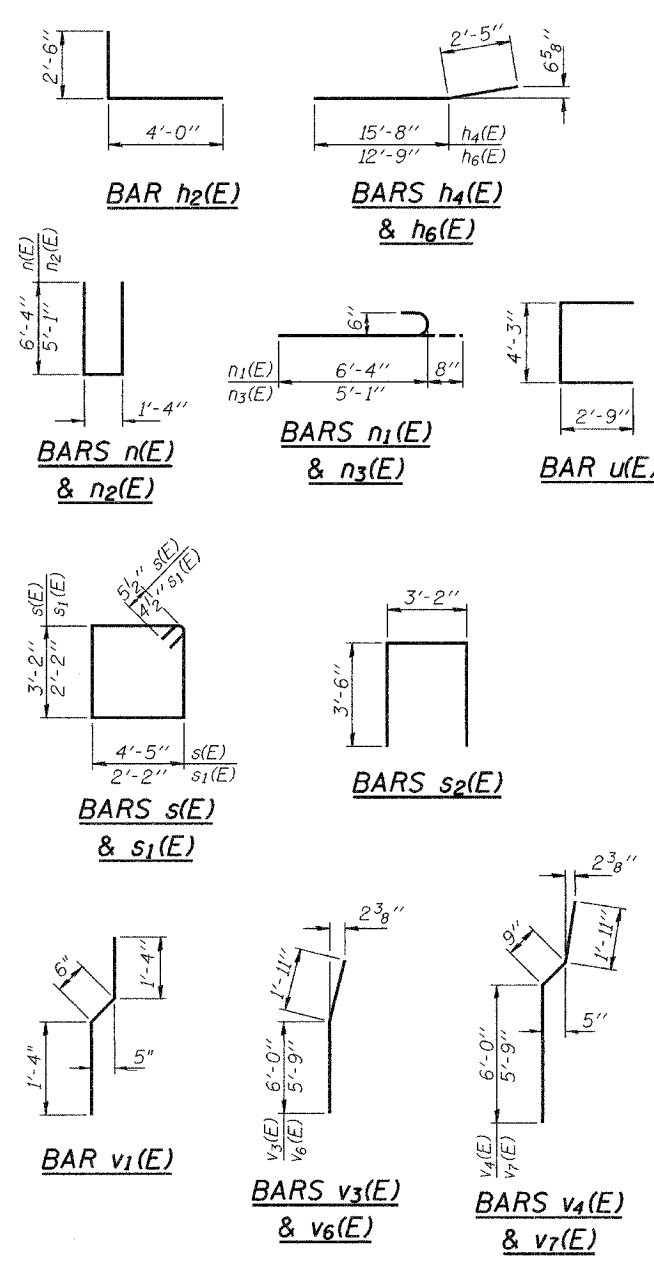
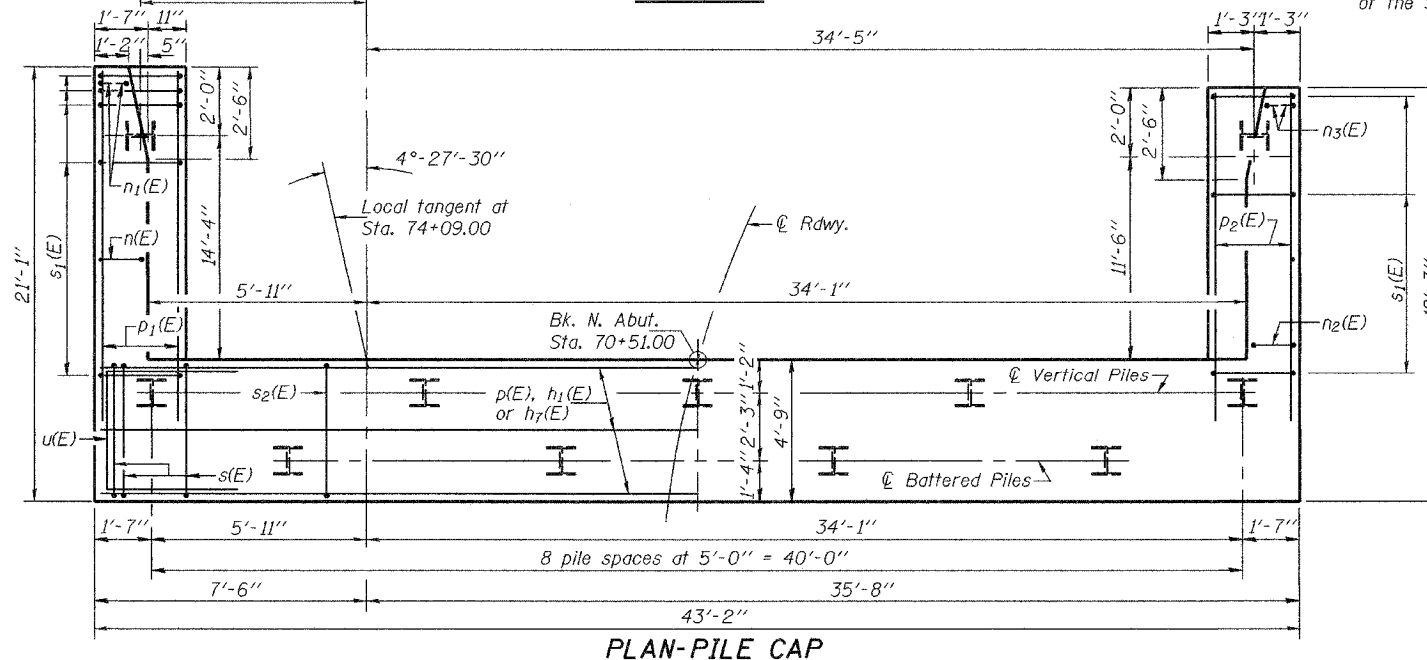
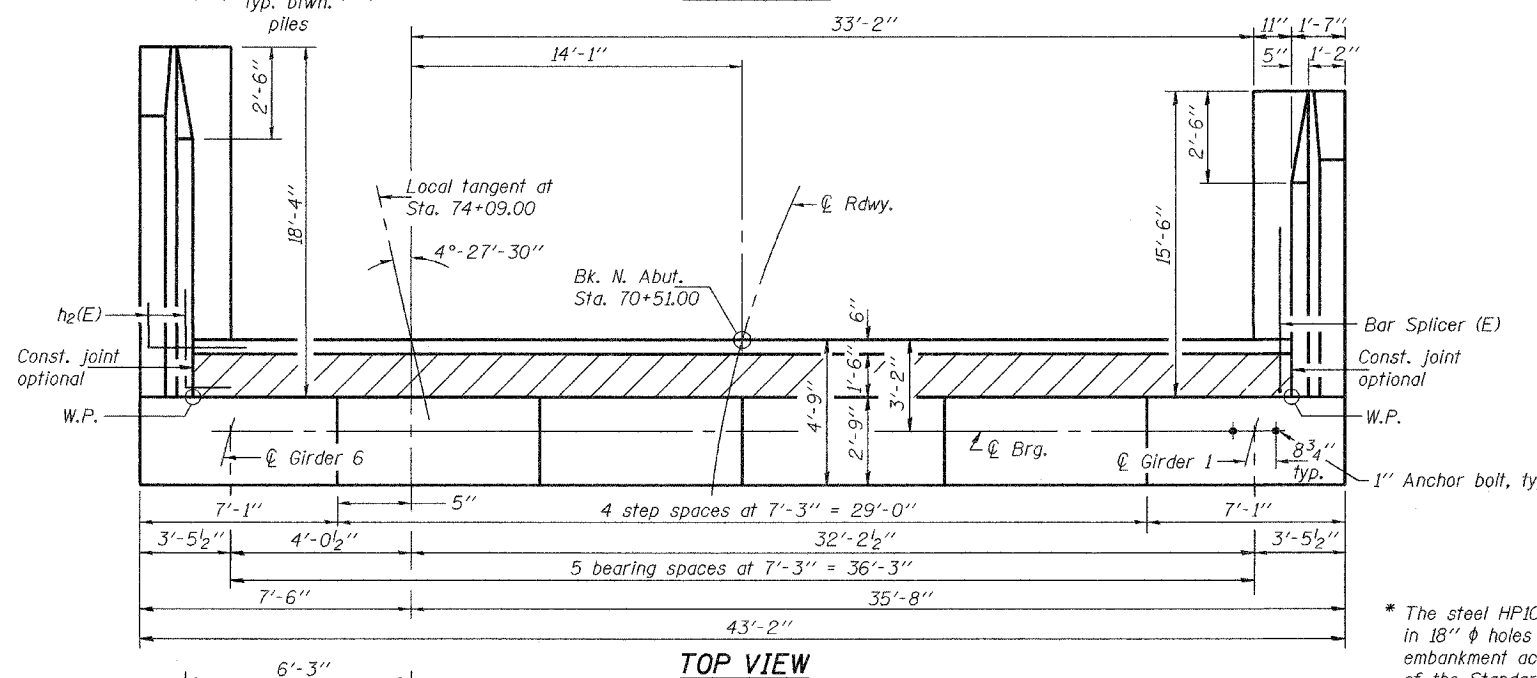
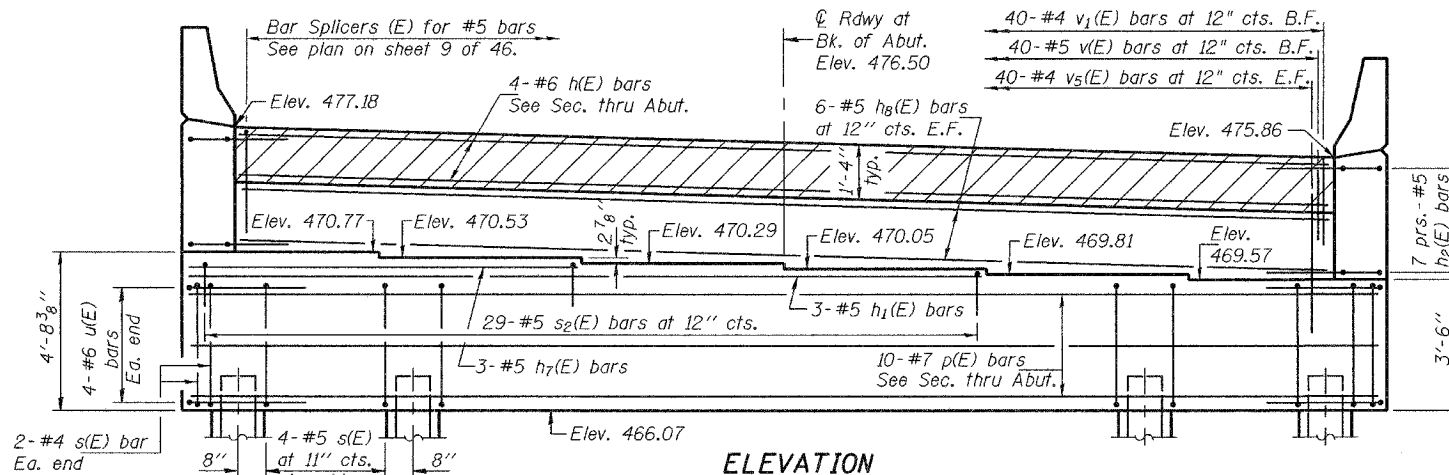
Notes: Reinforcement bars designated (E) shall be epoxy coated.
For details of bar splicers, see sheet 42 of 46.
For anchor bolt installation, see sheet 30 of 46.
Space reinforcement in cap to miss anchor bolts.

*PILE DATA

Type: HP10x57
Capacity: Driven to refusal
Est. Length: 56'
No. Required: 10 + 1 Test pile

NORTH ABUTMENT
BILL OF MATERIAL

Bar	No.	Size	Length	Shape
h(E)	4	#6	39'-9"	
h ₁ (E)	3	#5	28'-6"	
h ₂ (E)	28	#5	6'-6"	
h ₃ (E)	13	#4	18'-1"	
h ₄ (E)	9	#4	18'-1"	
h ₅ (E)	13	#4	15'-2"	
h ₆ (E)	9	#4	15'-2"	
h ₇ (E)	3	#5	14'-0"	
h ₈ (E)	12	#5	39'-8"	
n(E)	15	#6	14'-0"	
n ₁ (E)	6	#6	7'-0"	
n ₂ (E)	12	#6	11'-6"	
n ₃ (E)	6	#6	5'-9"	
p(E)	10	#7	42'-10"	
p ₁ (E)	6	#7	19'-10"	
p ₂ (E)	6	#7	17'-0"	
s(E)	36	#5	16'-1"	
s ₁ (E)	38	#4	9'-5"	
s ₂ (E)	29	#5	10'-2"	
u(E)	8	#6	9'-9"	
v(E)	40	#5	3'-5"	
v ₁ (E)	40	#4	3'-2"	
v ₂ (E)	19	#6	8'-11"	
v ₃ (E)	3	#6	7'-11"	
v ₄ (E)	16	#6	8'-8"	
v ₅ (E)	80	#4	8'-6"	
v ₆ (E)	13	#6	7'-8"	
v ₇ (E)	3	#6	8'-5"	
v ₈ (E)	16	#6	8'-8"	
Structure Excavation		Cu. Yd.	322.9	
Concrete Structures		Cu. Yd.	69.3	
Reinforcement Bars, Epoxy Coated		Pound	6350	
Furnishing Steel Piles HP10x57		Foot	560	
Test Pile Steel HP10x57		Each	1	
Driving Steel Piles		Foot	560	



DESIGNED	SMR
CHECKED	FT
DRAWN	h.t. parsons
CHECKED	SMR/FT

May 16, 2005

EXAMINED *Thomas J. Damagala*
ENGINEER OF BRIDGE DESIGN

PASSED *Ralph E. Anderson*
ENGINEER OF BRIDGES AND STRUCTURES

NORTH ABUTMENT
F.A.P. RTE. 315 - SEC. (18BRY-1)BR
FULTON COUNTY
STATION 74+09.00
STRUCTURE NO. 029-0068