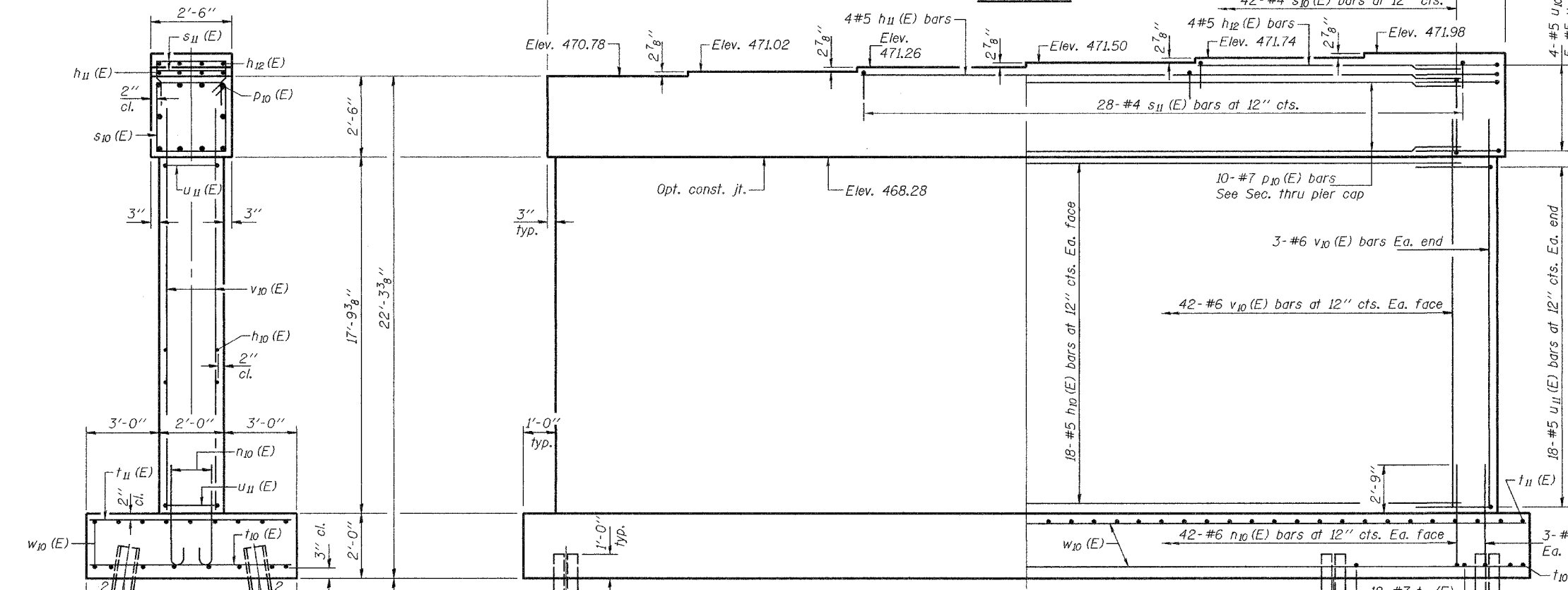
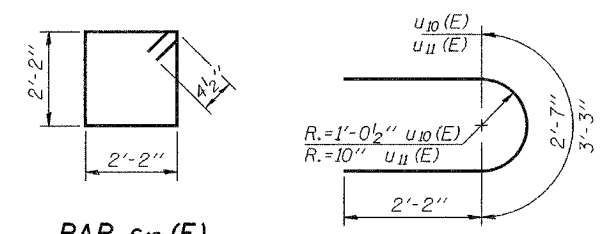
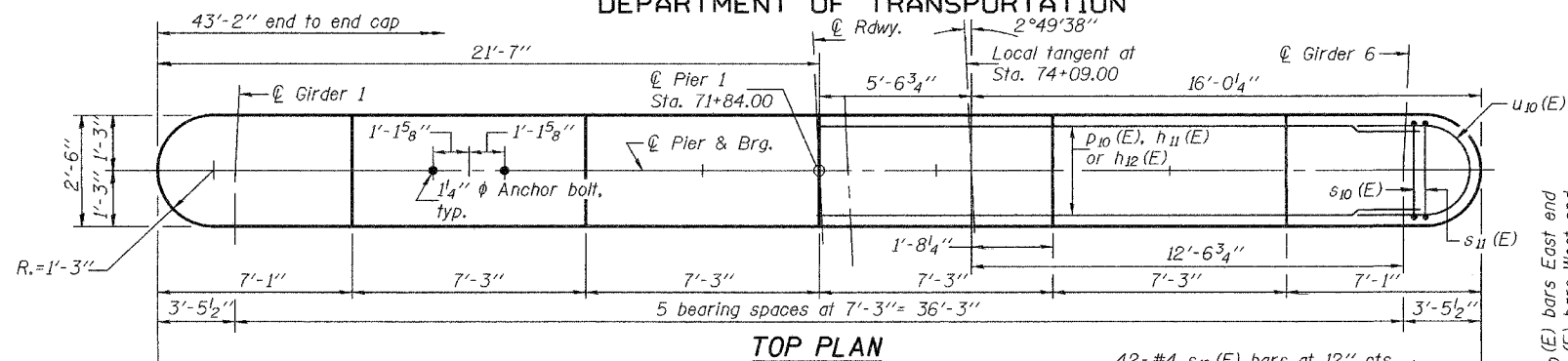


STATE OF ILLINOIS
DEPARTMENT OF TRANSPORTATION

| | | | | |
|-----------------------|-------------|--------------------|-------|--------------|
| ROUTE NO. | SECTION | COUNTY | SHEET | SHEET NO. 35 |
| FAP 315 | (18BRY-1)BR | FULTON | 190 | 46 SHEETS |
| FED. ROAD DIST. NO. 7 | ILLINOIS | FED. AID PROJ. NO. | | |

Contract #88753

Notes: Space reinforcement in cap to miss anchor bolts.
Four steps monolithically with cap.
Bars indicated thus 8 x 2- #5 etc. indicates 8 lines of bars with 2 lengths per line.
For anchor bolt installation details, see sheet 30 of 46.



MIN. BAR LAP
#5 bar = 3'-0"

BILL OF MATERIAL

| Bar | No. | Size | Length | Shape |
|---------------------|-----|------|---------|-------|
| h ₁₀ (E) | 36 | #5 | 40'-8" | — |
| h ₁₁ (E) | 4 | #5 | 27'-5" | — |
| h ₁₂ (E) | 4 | #5 | 14'-1" | — |
| n ₁₀ (E) | 90 | #6 | 5'-0" | U |
| p ₁₀ (E) | 10 | #7 | 40'-8" | — |
| s ₁₀ (E) | 42 | #4 | 9'-5" | □ |
| s ₁₁ (E) | 28 | #4 | 6'-4" | □ |
| t ₁₀ (E) | 76 | #7 | 7'-8" | — |
| t ₁₁ (E) | 45 | #5 | 7'-8" | — |
| u ₁₀ (E) | 9 | #5 | 7'-7" | U |
| u ₁₁ (E) | 36 | #5 | 6'-11" | U |
| v ₁₀ (E) | 90 | #6 | 19'-10" | — |
| w ₁₀ (E) | 34 | #5 | 23'-8" | — |

| | | |
|----------------------------------|---------|-------|
| Concrete Structures | Cu. Yd. | 94.3 |
| Reinforcement Bars, Epoxy Coated | Pound | 8990 |
| Structure Excavation | Cu. Yd. | 129.8 |
| Furnishing Steel Piles HP12x74 | Foot | 494 |
| Driving Steel Piles | Foot | 494 |
| Test Pile Steel HP12x74 | Each | 1 |

Reinforcement bars designated (E) shall be epoxy coated.

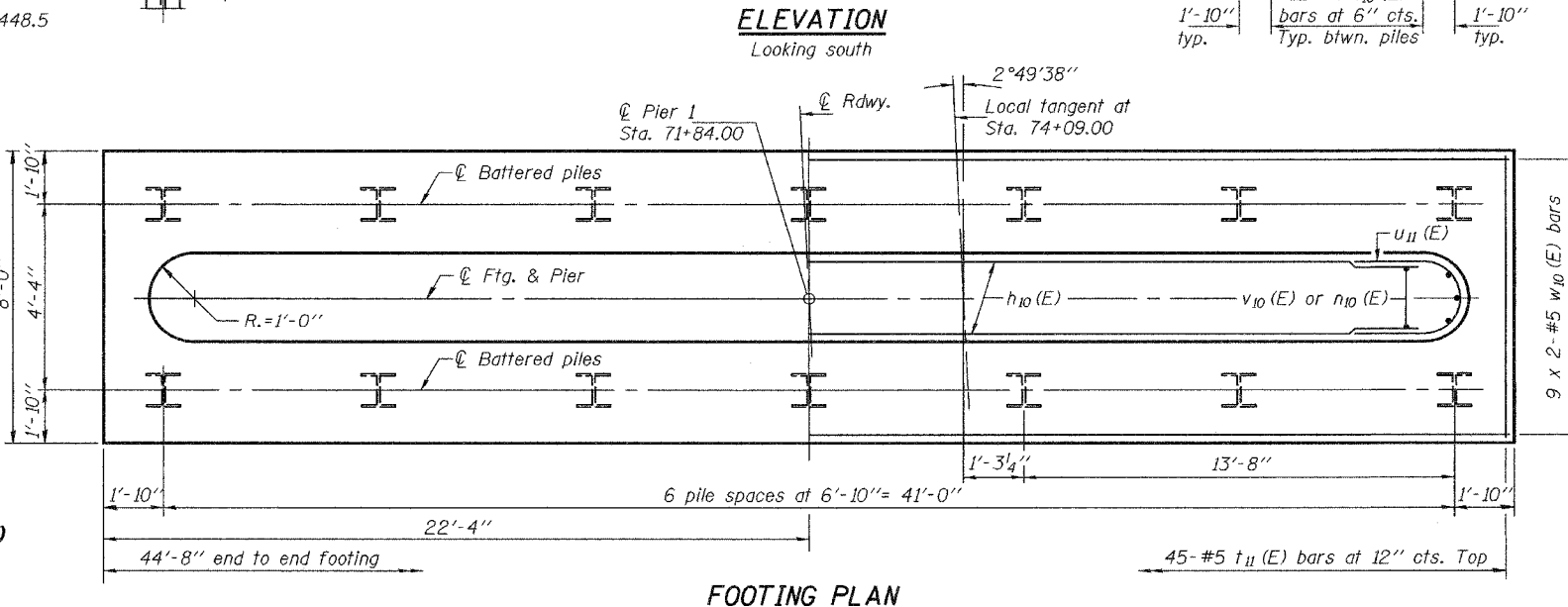
END VIEW

PILE DATA

Type: HP12x74
Capacity: Driven to refusal
Est. length: 38'
No. Required: 13 + 1 test pile

| | |
|----------|--------------|
| DESIGNED | CCC |
| CHECKED | DPN |
| DRAWN | h.t. parsons |
| CHECKED | FT/DPN |

May 16, 2005
EXAMINED *Thomas J. Demgalecki*
ENGINEER OF BRIDGE DESIGN
PASSED *Ralph E. Anderson*
ENGINEER OF BRIDGES AND STRUCTURES



PIER 1
F.A.P. RTE. 315 - SEC. (18BRY-1)BR
FULTON COUNTY
STATION 74+09.00
STRUCTURE NO. 029-0068