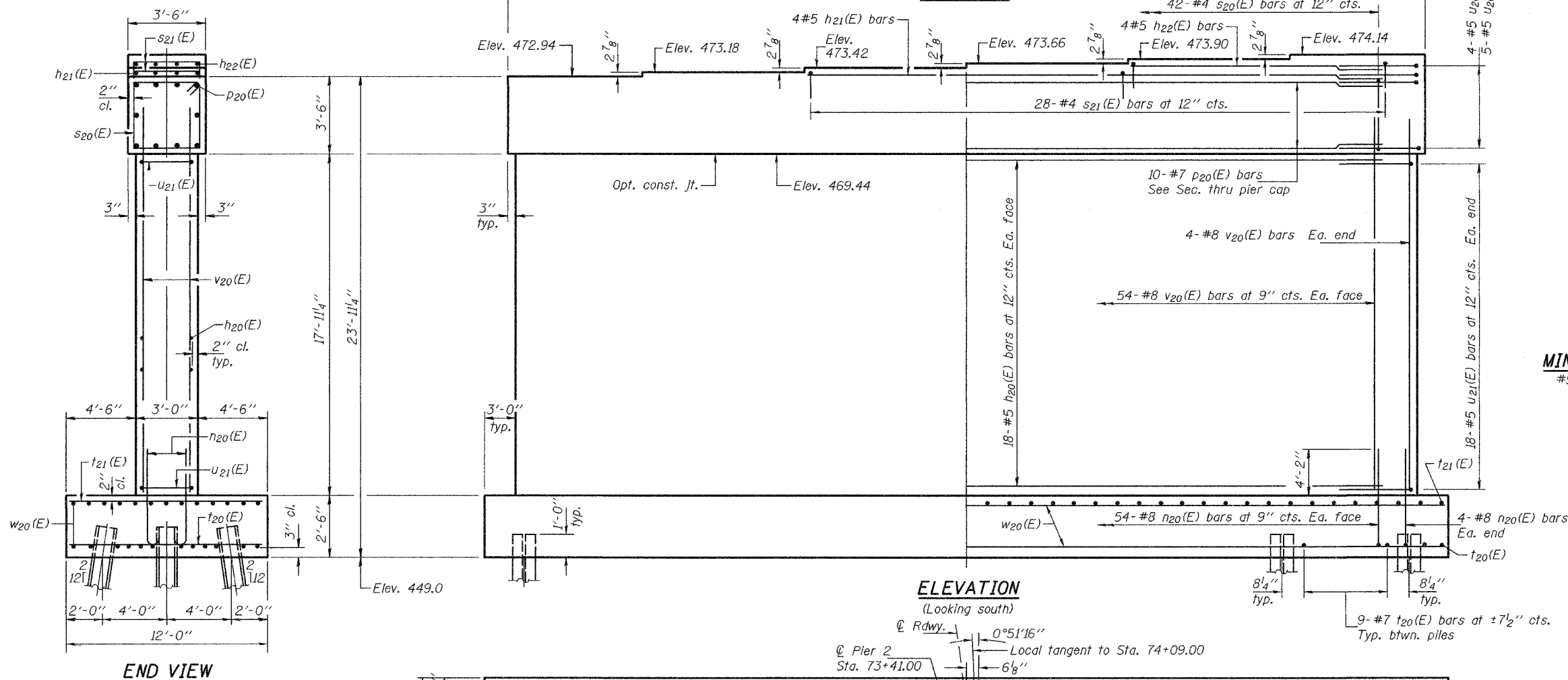
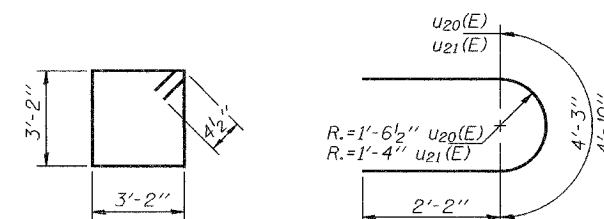
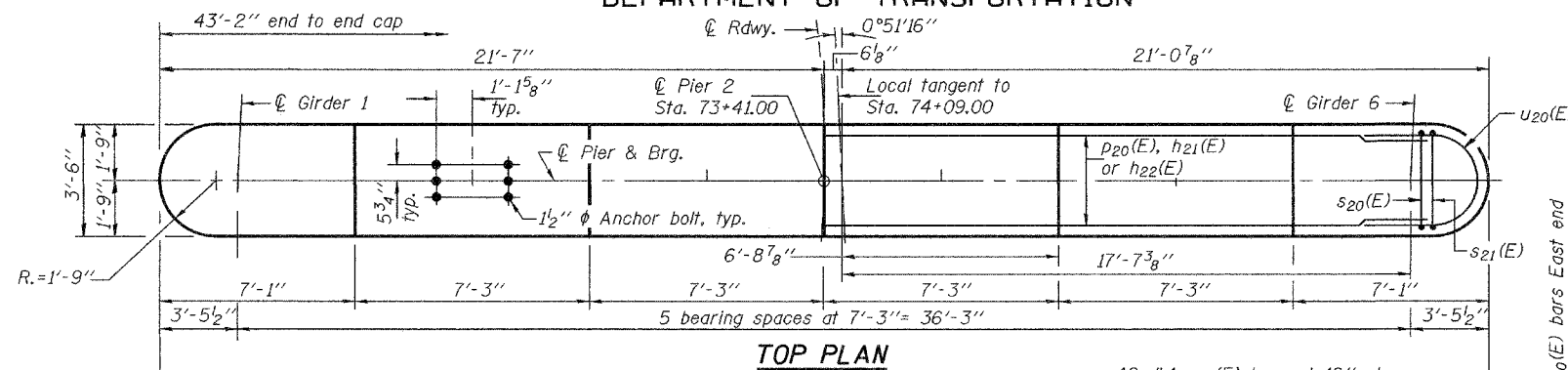


STATE OF ILLINOIS
DEPARTMENT OF TRANSPORTATION

ROUTE NO.	SECTION	COUNTY	POST MILES	SHEET	SHEET NO. 36 46 SHEETS
FAP 315	(18BRY-1)BR	FULTON		36	
FED. ROAD DIST. NO. 7	ILLINOIS	FED. AID PROJECT			

Contract #88753

Notes: Space reinforcement in cap to miss anchor bolts.
Four steps monolithically with cap.
Bars indicated thus 12 x 2- #5 etc. indicates 12 lines of bars with 2 lengths per line.
For anchor bolt installation details, see sheet 30 of 46.



MIN. BAR LAP
#5 bar = 3'-0"

BILL OF MATERIAL

Bar	No.	Size	Length	Shape
h20(E)	36	#5	39'-8"	—
h21(E)	4	#5	26'-11"	—
h22(E)	4	#5	12'-5"	—
n20(E)	116	#8	7'-4"	U
p20(E)	10	#7	39'-8"	—
s20(E)	42	#4	13'-5"	□
s21(E)	28	#4	8'-4"	□
t20(E)	67	#7	11'-8"	—
t21(E)	49	#5	11'-8"	—
u20(E)	9	#5	9'-2"	U
u21(E)	36	#5	8'-7"	U
v20(E)	116	#8	20'-0"	—
w20(E)	50	#5	25'-8"	—
Concrete Structures	Cu. Yd.		159.8	
Reinforcement Bars, Epoxy Coated	Pound		15400	
Structure Excavation	Cu. Yd.		187.3	
Furnishing Steel Piles HP12x74	Foot		805	
Driving Steel Piles	Foot		805	
Test Pile HP12x74	Each		1	

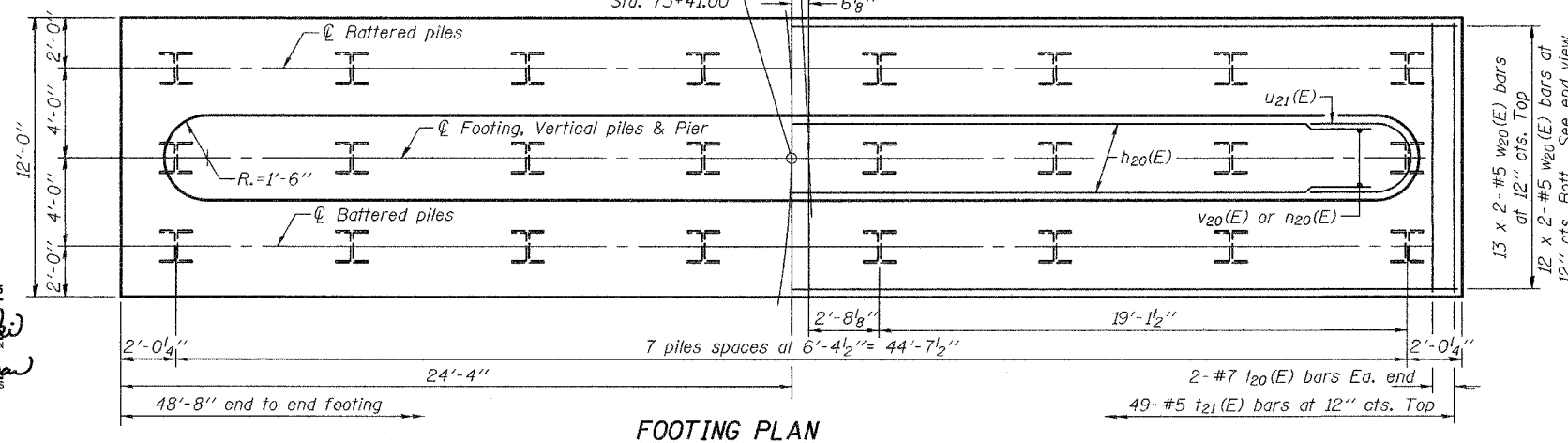
Reinforcement bars designated (E) shall be epoxy coated.

PILE DATA

Type: HP12x74
 Capacity: Driven to refusal
 Est. length: 35'
 No. Required: 23 + 1 test pile

DESIGNED	DPN
CHECKED	FT
DRAWN	h.t. parsons
CHECKED	DPN/FT

May 16, 2005
 EXAMINED *Thomas J. D'Amico*
 ENGINEER OF BRIDGE DESIGN
 PASSED *Ralph E. Anderson*
 ENGINEER OF BRIDGES AND STRUCTURES



PIER 2
 F.A.P. RTE. 315 - SEC. (18BRY-1)BR
 FULTON COUNTY
 STATION 74+09.000
 STRUCTURE NO. 029-0068