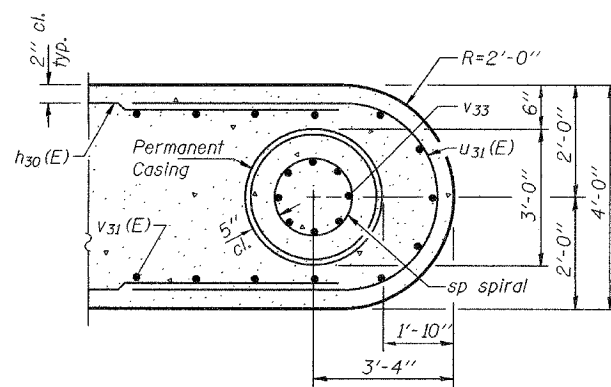


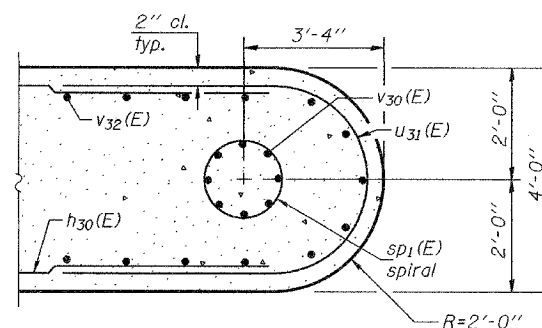
STATE OF ILLINOIS
DEPARTMENT OF TRANSPORTATION

ROUTE NO.	SECTION	COUNTY	TOTAL SHEETS	SHEET NO.
FAP 315	(18BRY-1)BR	FULTON	46	38
FED. ROAD DIST. NO. 7	ILLINOIS	FED. AID PROJECT-		

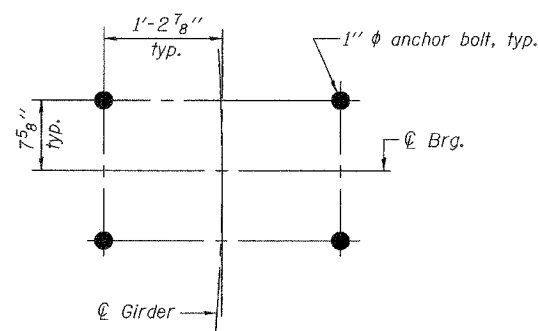
Contract #88753



SECTION B-B

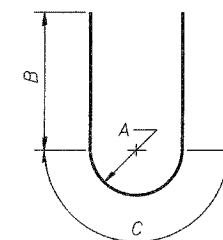


SECTION C-C



DETAIL A

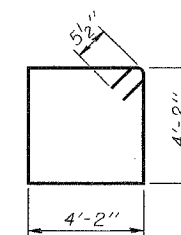
Notes: For anchor bolt installation details, see sheet 30 of 46.



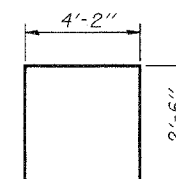
BARS $U_{30}(E)$
or $U_{31}(E)$

A, B & C DIMENSIONS

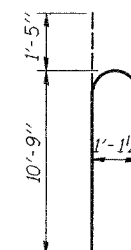
Bar	A	B	C
$U_{30}(E)$	2'-0 1/4"	6'-4"	6'-4"
$U_{31}(E)$	1'-10"	4'-10"	5'-9"



BAR $s_{30}(E)$



BAR $s_{31}(E)$



BAR $v_{30}(E)$

BILL OF MATERIAL

Bar	No.	Size	Length	Shape
$h_{30}(E)$	36	#5	38'-8"	—
$p_{30}(E)$	12	#8	38'-8"	—
$p_{31}(E)$	4	#8	26'-5"	—
$p_{32}(E)$	4	#8	11'-11"	—
$s_{30}(E)$	34	#5	17'-7"	□
$s_{31}(E)$	27	#5	9'-2"	U
** sp	5	#5	45'-0"	W
** $sp_1(E)$	5	#5	8'-11"	W
$U_{30}(E)$	11	#6	19'-0"	U
$U_{31}(E)$	18	#5	15'-5"	U
v_{33}	55	#10	50'-7"	—
$v_{30}(E)$	55	#10	12'-2"	U
$v_{31}(E)$	90	#5	10'-8"	—
$v_{32}(E)$	90	#5	11'-6"	—
Underwater Structure Excavation Protection, Location 1	Each		1	
Drilled Shaft in Soil 36"	Foot		145	
Drilled Shaft in Rock 30"	Foot		80	
Concrete Structures	Cu. Yd.		133.8	
Reinforcement Bars, Epoxy Coated	Pound		10920	
* Reinforcement Bars	Pound		15270	
Structure Excavation	Cu. Yd.		80	
Permanent Casing	Foot		70	

** Length is height of spiral.
* Weight includes spacers for spirals.

DESIGNED	DPN
CHECKED	FT
DRAWN	h.t. parsons
CHECKED	DPN/FT

May 16, 2005
EXAMINED *Thomas J. Domagala*
ENGINEER OF BRIDGE DESIGN
PASSED *Ralph E. Anderson*
ENGINEER OF BRIDGES AND STRUCTURES

PIER 3
F.A.P. RTE. 315 - SEC. (18BRY-1)BR
FULTON COUNTY
STATION 74+09.000
STRUCTURE NO. 029-0068