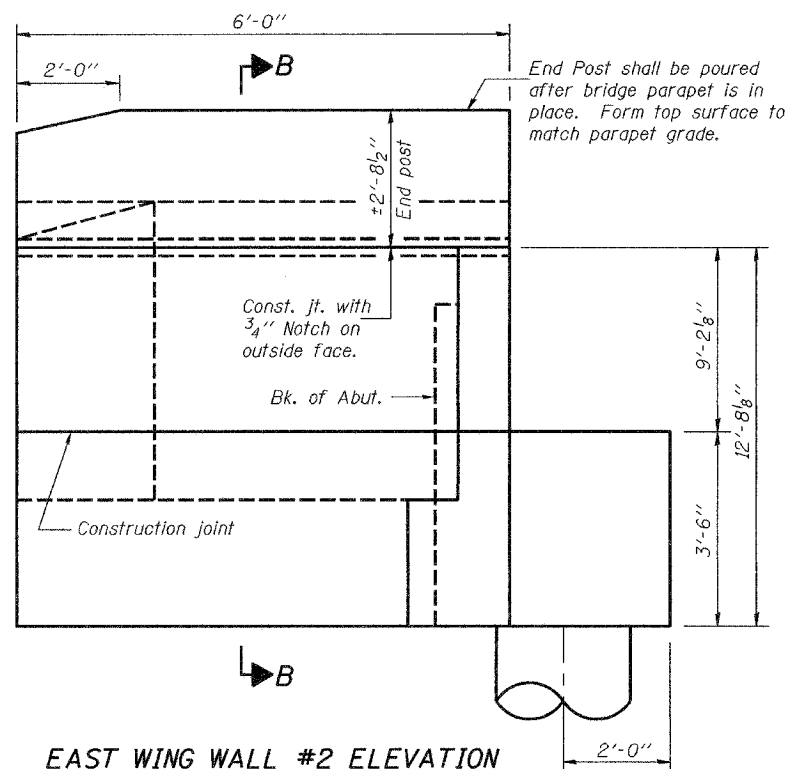


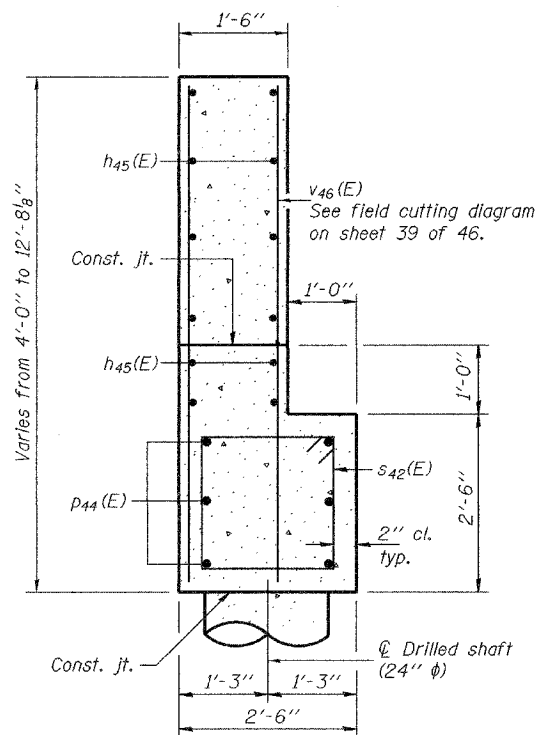
STATE OF ILLINOIS  
DEPARTMENT OF TRANSPORTATION

ROUTE NO.	SECTION	COUNTY	TOTAL SHEETS	SHEET	SHEET NO. 40 46 SHEETS
FAP 315	(18BRY-1)BR	FULTON		40	
FED. ROAD DIST. NO. 7	BLINDS	FED. AID PROJECT-	Contract #88753		

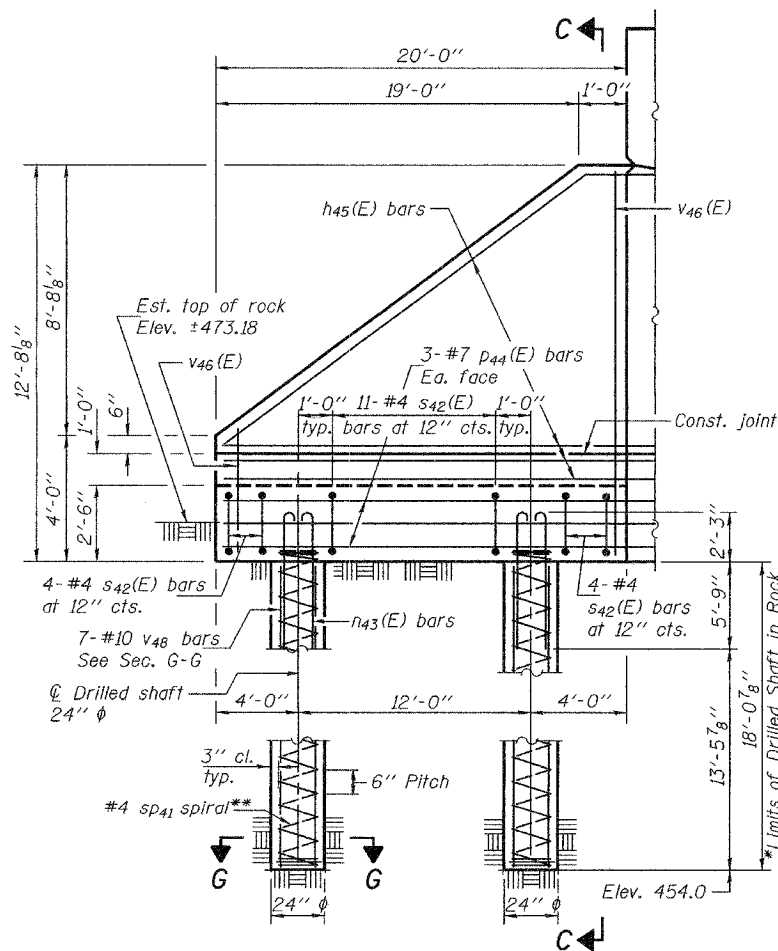


**EAST WING WALL #2 ELEVATION**

Parallel to Roadway  
(Showing dimensions)

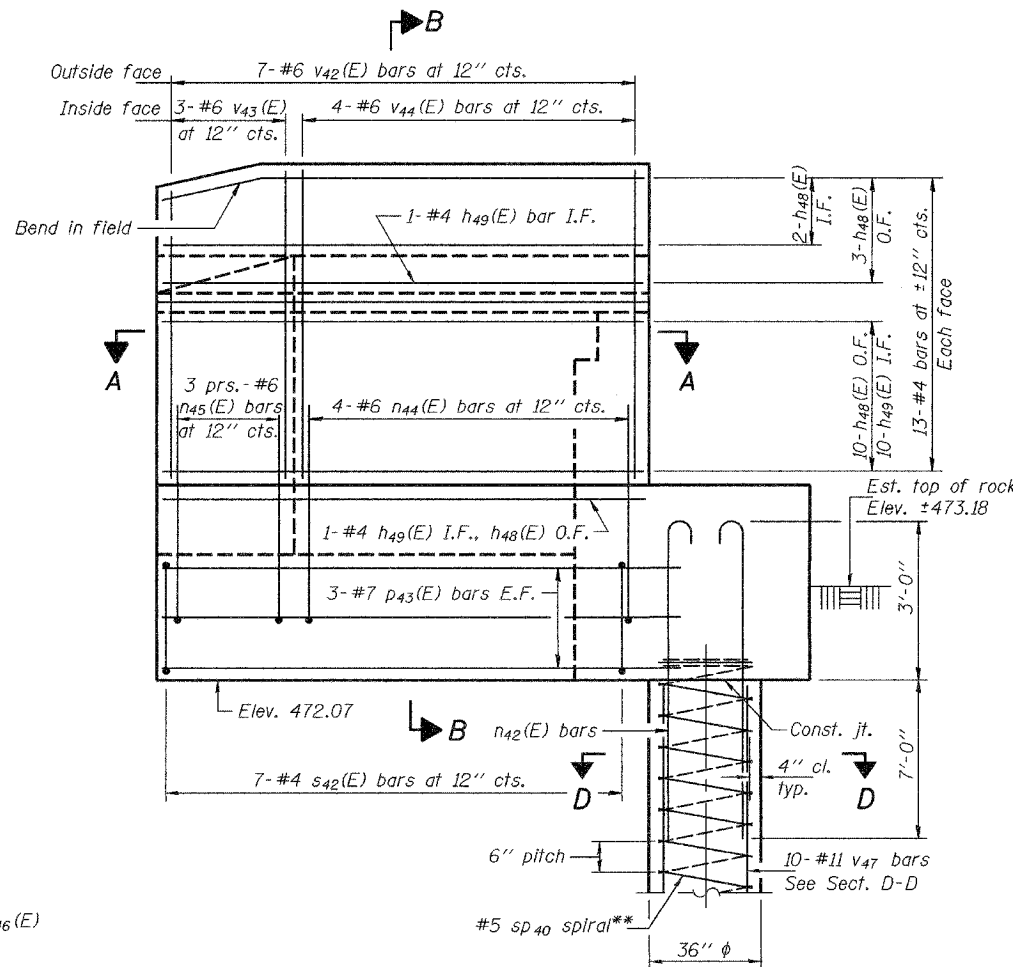


**SECTION C-C**



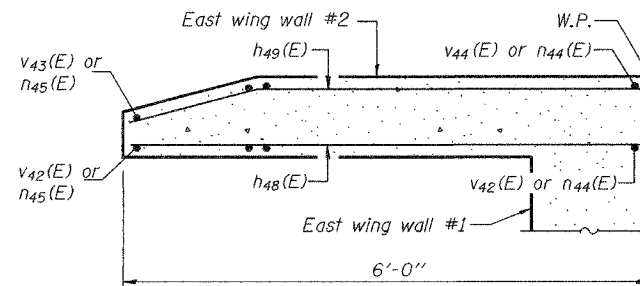
**EAST WING WALL #1 & DRILLED SHAFT ELEVATION**

Looking south

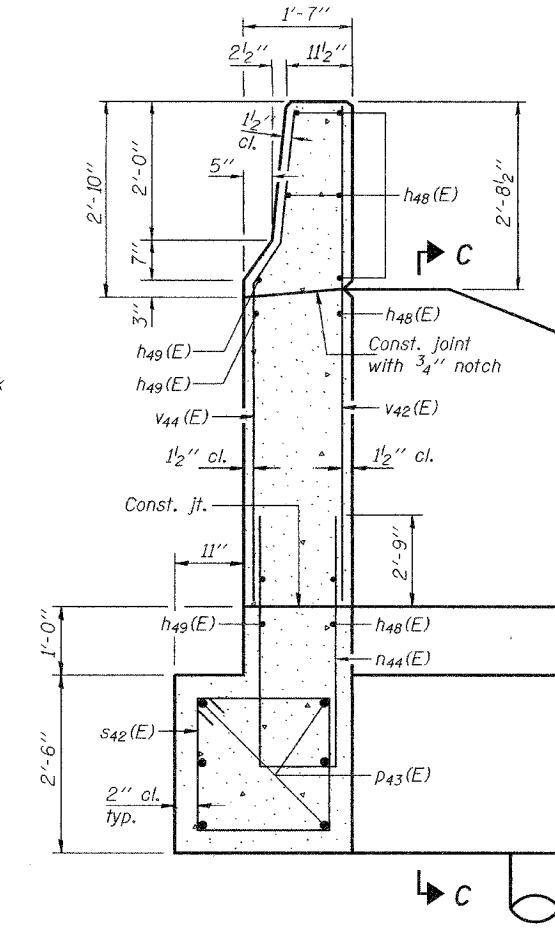


**EAST WING WALL #2 & DRILLED SHAFT ELEVATION**

Showing Reinforcement  
20'-0" East wingwall not shown for clarity.  
For remainder of details for 36" phi shaft, see sheet 41 of 46.



**SECTION A-A**



**SECTION B-B**

Notes: \* The quantities and detailing are based on the estimated elevations shown on the plans. The actual elevations may differ at each shaft and corresponding adjustments shall be made to the drilled shaft and reinforcement quantities and payment limits. Reinforcement bars designated (E) shall be epoxy coated. Quantity of concrete in end post included with Concrete Superstructure on sheet 11 of 46. \*\* Provide 1/2 extra turns top and bottom of each drilled shaft. Extend spiral 2" into abutment or wingwall cap. Provide min. 4-#4 spacers or equivalent. Min. lap for spirals = 2'-6" (#5 spiral) For Sections D-D & G-G, see sheet 41 of 46.

**SOUTH ABUTMENT DETAILS**  
**EAST WING WALLS**  
**F.A.P. RTE. 315 - SEC. (18BRY-1)BR**  
**FULTON COUNTY**  
**STATION 74+09.00**  
**STRUCTURE NO. 029-0068**

DESIGNED	DPN
CHECKED	SMR
DRAWN	h.t. parsons
CHECKED	DPN/SMR

May 16, 2005  
EXAMINED *Thomas J. Damalakis*  
PASSED *Ralph E. Anderson*  
ENGINEER OF BRIDGE DESIGN  
ENGINEER OF BRIDGES AND STRUCTURES