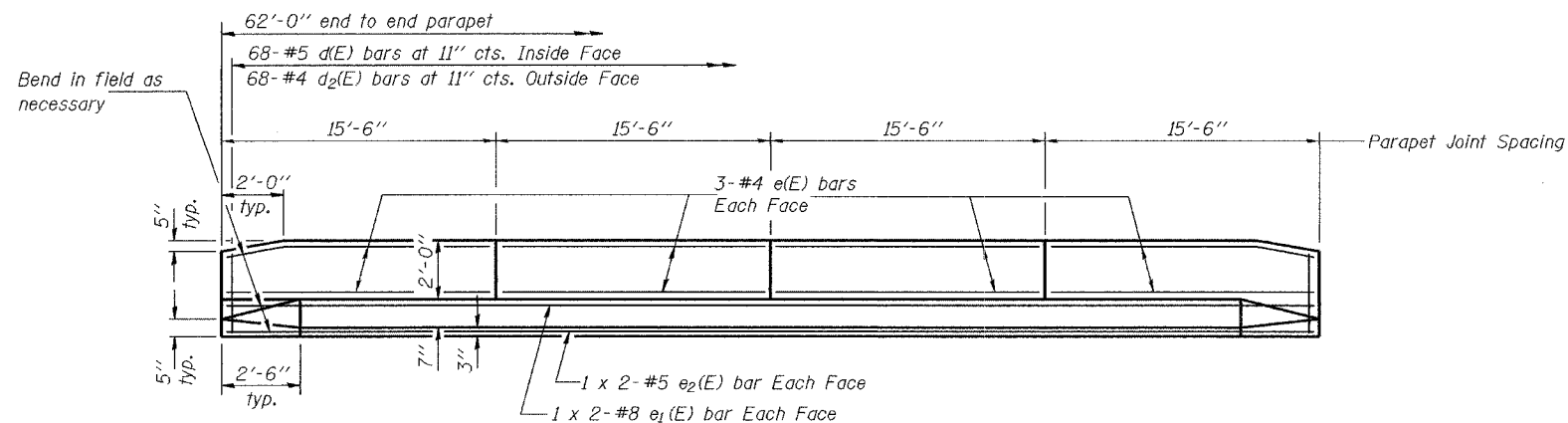


STATE OF ILLINOIS
DEPARTMENT OF TRANSPORTATION

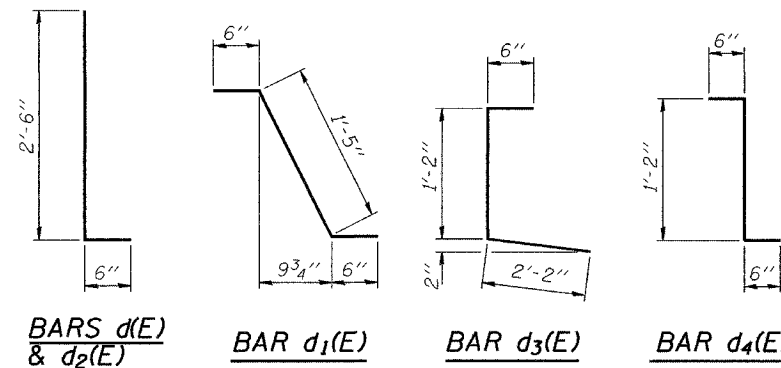
ROUTE NO.	SECTION	COUNTY	JOB NO.	SHEET NO.
FAP 315	18B-1	FULTON		215
FED. ROAD DIST. NO. 7	LENGTH	FED. AID PROJECT		

Contract #88753

SHEET NO. 6
13 SHEETS

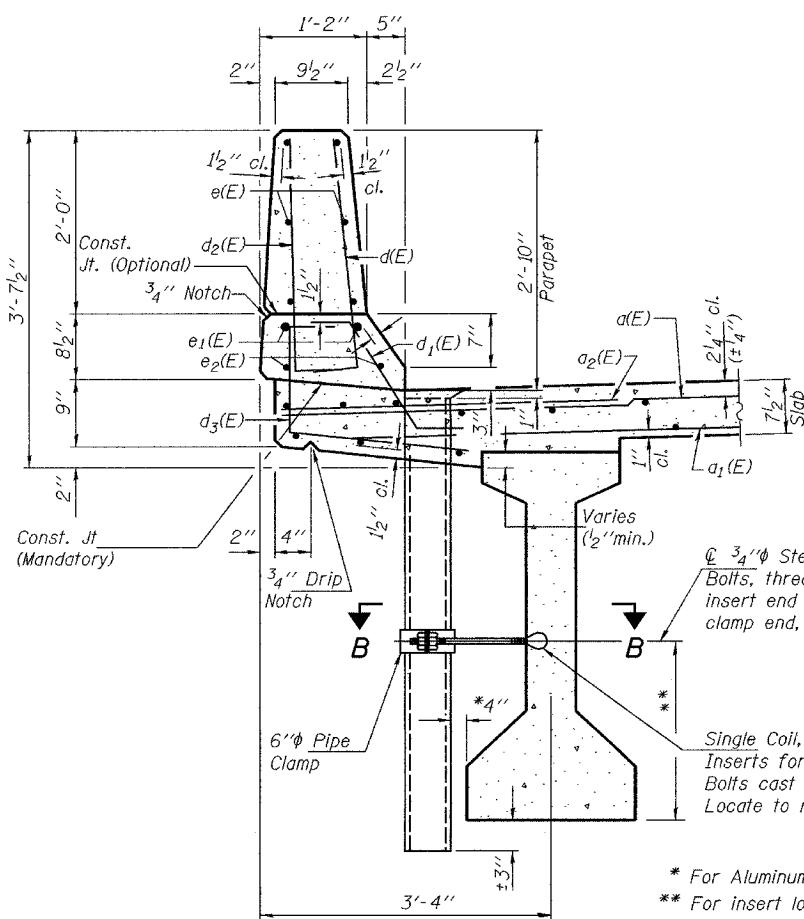


INSIDE ELEVATION OF PARAPET

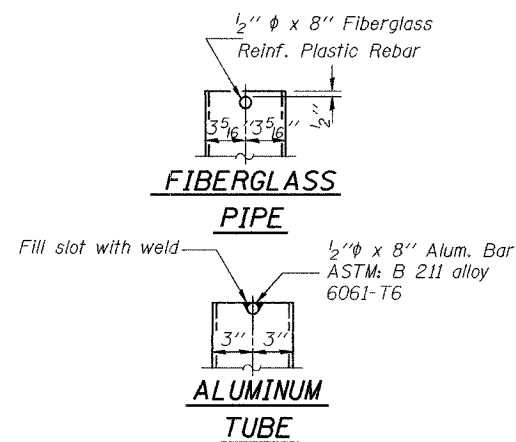


MIN. BAR LAPS

#5 bar = 1'-8"
#8 bar = 3'-5"

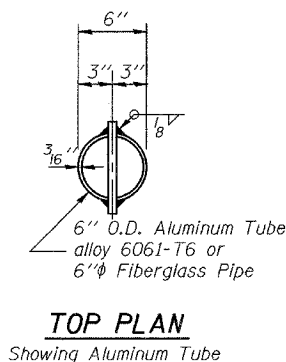


SECTION THRU PARAPET



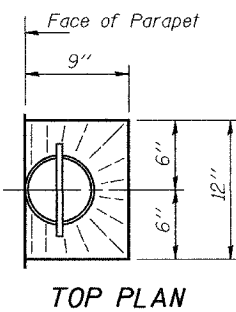
FIBERGLASS PIPE

ALUMINUM TUBE



TOP PLAN

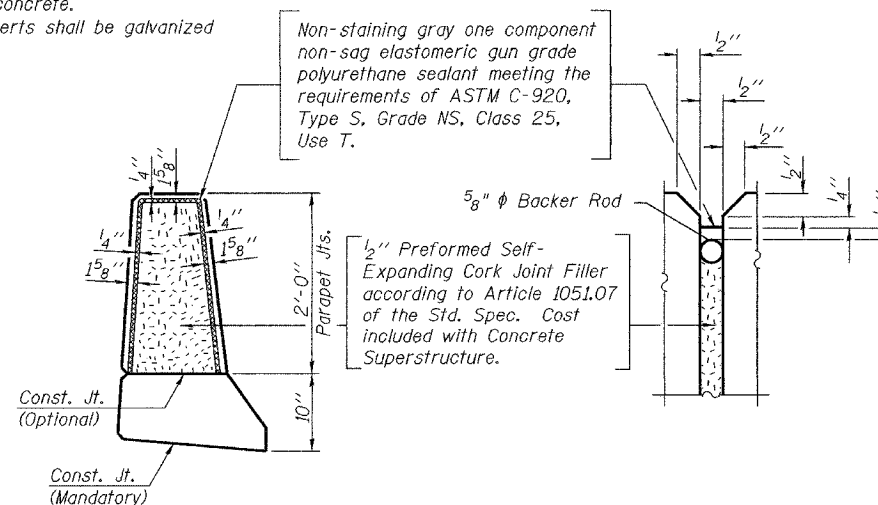
Showing Aluminum Tube



TOP PLAN

Notes:

Fiberglass pipe shall conform to ASTM D2996, with short-time rupture strength hoop tensile stress of 30,000 p.s.i. minimum. The exterior surfaces of the floor drains shall be coated or pigmented by the manufacturer with a color that matches the concrete. The clamping device and inserts shall be galvanized according to AASHTO M 232.



PARAPET JOINT DETAILS

SUPERSTRUCTURE
BILL OF MATERIAL

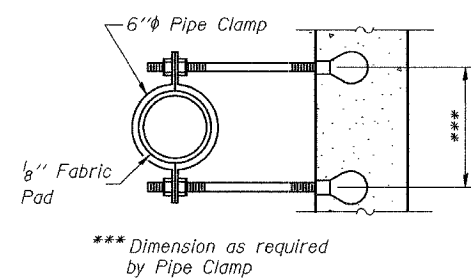
Bar	No.	Size	Length	Shape
a(E)	100	#5	38'-6"	—
a1(E)	75	#5	36'-10"	—
a2(E)	100	#5	4'-6"	—
b(E)	84	#5	31'-9"	—
b1(E)	93	#5	21'-8"	—
d(E)	136	#5	3'-0"	—
d1(E)	126	#5	2'-5"	—
d2(E)	136	#4	3'-0"	—
d3(E)	136	#4	3'-8"	—
d4(E)	12	#5	2'-2"	—
e(E)	48	#4	15'-2"	—
e1(E)	8	#8	32'-7"	—
e2(E)	8	#5	31'-8"	—
m(E)	4	#6	37'-4"	—
m1(E)	24	#6	9'-3"	—
m2(E)	6	#6	38'-11"	—
m3(E)	10	#6	4'-5"	—
m4(E)	4	#6	2'-1"	—
s(E)	72	#5	6'-10"	—
s1(E)	72	#4	10'-10"	—
v(E)	76	#5	3'-8"	—
Reinforcement Bars, Epoxy Coated Concrete Superstructure	Pound		17,380	
	Cu. Yd.		100.4	

Reinforcement bars designated (E) shall be epoxy coated. Bars indicated thus 1 x 2-#5 etc. indicates 1 line of bars with 2 lengths per line.

SUPERSTRUCTURE DETAILS
F.A.P. RT. 315 SEC. 18B-1
FULTON COUNTY
STATION 84+17.00
STRUCTURE NO. 029-0060

DESIGNED	Stephen M. Ryan
CHECKED	Sital J. Bhakta
DRAWN	R. Doty @MC
CHECKED	SMR/SJB

EXAMINED	Thomas J. Domagalabi ENGINEER OF BRIDGE DESIGN
PASSED	Ralph E. Anderson ENGINEER OF BRIDGES AND STRUCTURES



SECTION B-B

PI-1-D 9-1-03