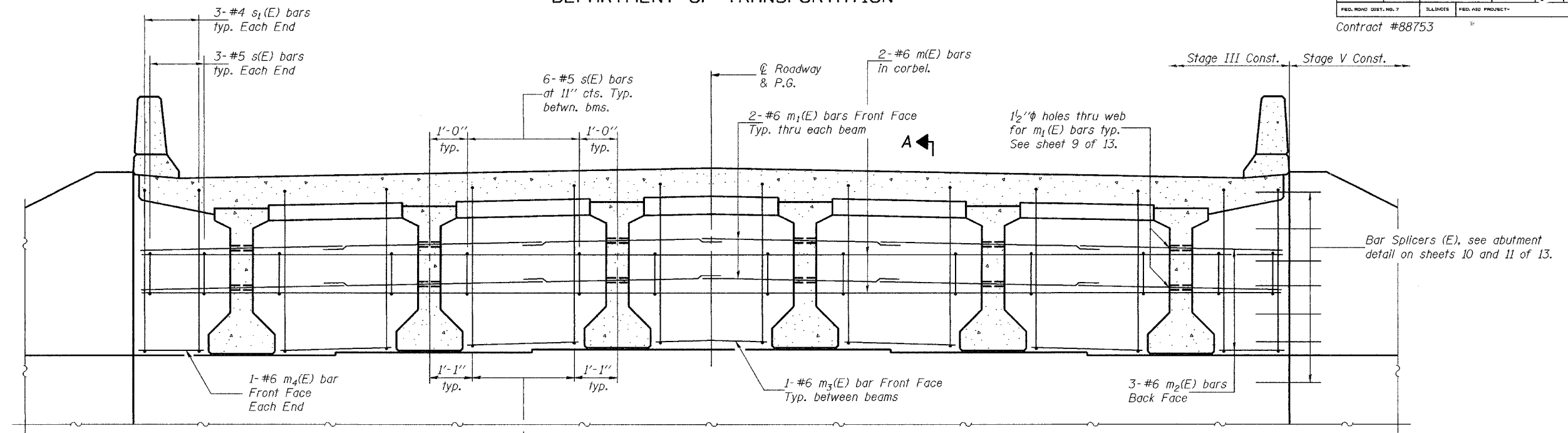


STATE OF ILLINOIS
DEPARTMENT OF TRANSPORTATION

ROUTE NO.	SECTION	COUNTY	TOTAL SHEETS	SHEET NO.
FAP 315	18B-1	FULTON		7
FED. ROAD DIST. NO. 7	ILLINOIS	FED. AID PROJECT		

13 SHEETS

Contract #88753

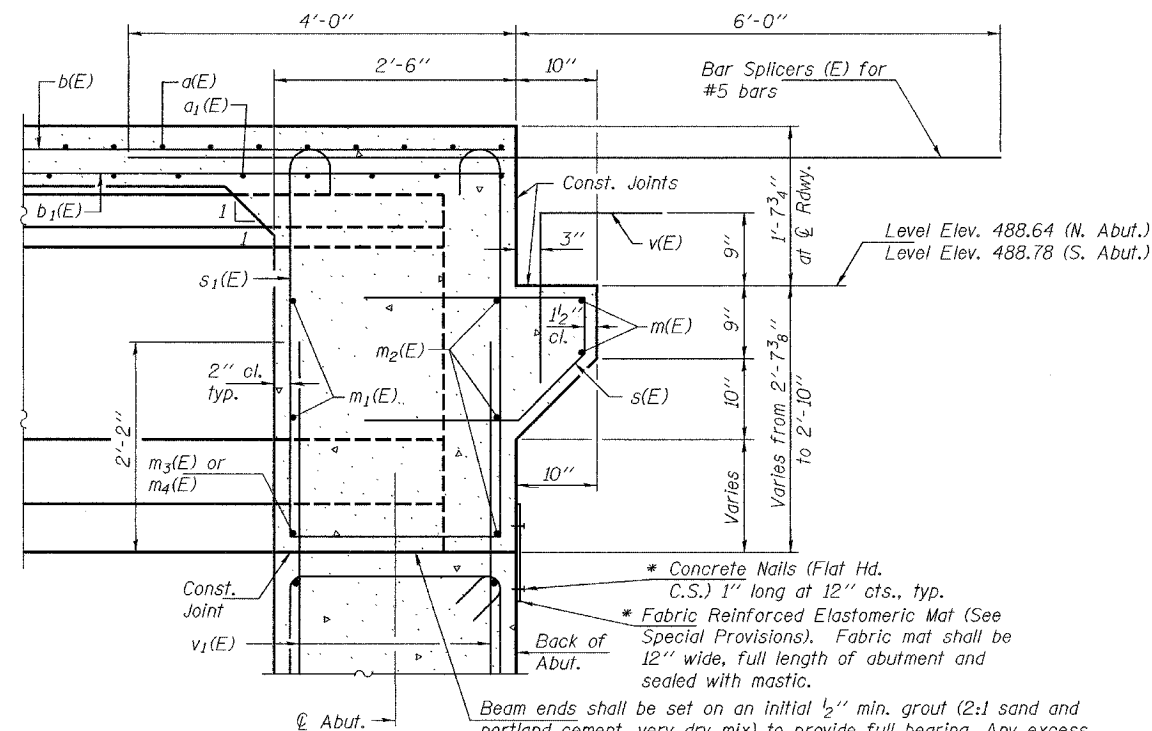


DIAPHRAGM AT ABUTMENTS

(Looking South at South Abutment, North Abutment similar).

MIN. BAR LAP

#6 bar = 2'-9"



Notes: Reinforcement bars in diaphragm are billed with superstructure on sheet 6 of 13. Concrete in diaphragm is included with Concrete Superstructure on sheet 6 of 13. For details of bars v(E), s(E) and s1(E) see sheet 6 of 13. Reinforcement bars designated (E) shall be epoxy coated. For details of Bar Splicers, see sheet 12 of 13.

Beam ends shall be set on an initial 1/2" min. grout (2:1 sand and portland cement, very dry mix) to provide full bearing. Any excess grout squeezed out from under the beam shall be removed. Cost included with Concrete Structures.

SECTION A-A

* Cost included with Concrete Structures.

DESIGNED	Stephen M. Ryan
CHECKED	Sital J. Bhakta
DRAWN	R. Doty BMC
CHECKED	SMR/SJB

April 11, 2005
EXAMINED *Thomas J. Romagosa*
PASSED *Ralph J. Anderson*
ENGINEER OF BRIDGES AND STRUCTURES

DIAPHRAGM DETAILS
F.A.P. RT. 315 SEC. 18B-1
FULTON COUNTY
STATION 84+17.00
STRUCTURE NO. 029-0060