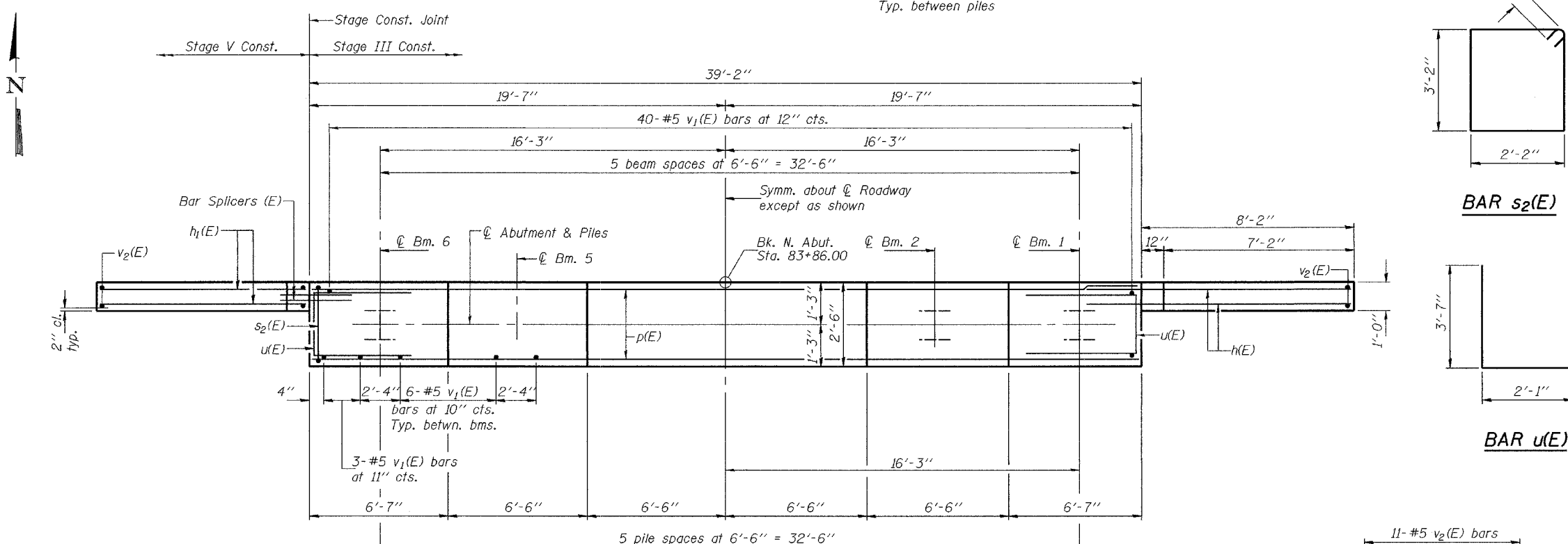
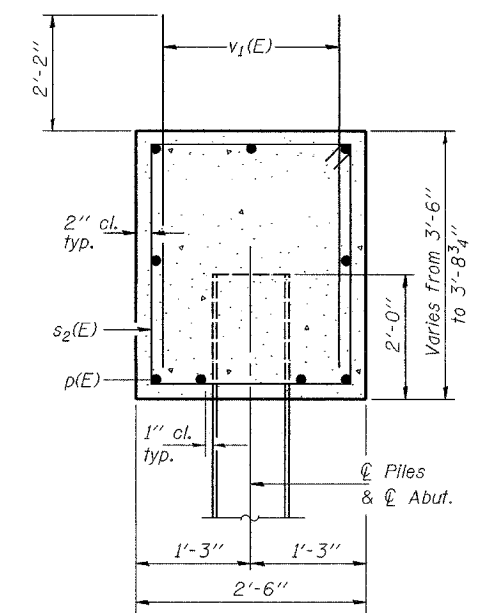
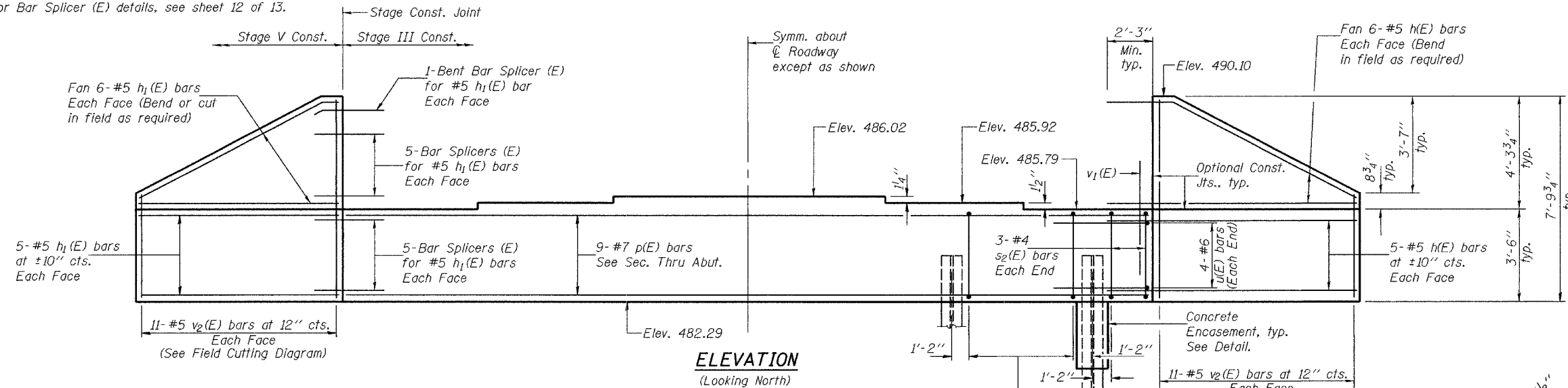


STATE OF ILLINOIS
DEPARTMENT OF TRANSPORTATION

ROUTE NO.	SECTION	COUNTY	STATE	SHEET NO.	SHEET NO. 10 13 SHEETS
FAP 315	18B-1	FULTON	ILLINOIS	13	
FED. ROAD DIST. NO. 7	ILLINOIS	FED. AID PROJECT-			

Contract #88753

Notes: Pour steps monolithically with cap.
Reinforcement bars designated (E) shall be epoxy coated.
For Bar Splicer (E) details, see sheet 12 of 13.

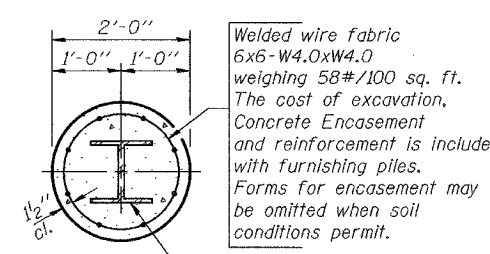


BAR s₂(E)

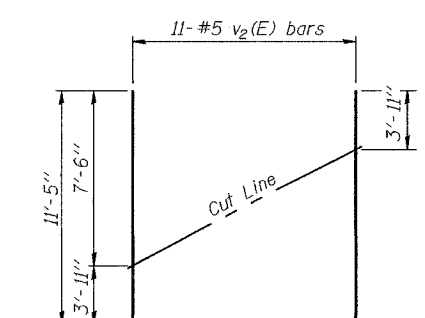
BAR u(E)

BILL OF MATERIAL

Bar No.	Size	Length	Shape
h(E)	22 #5	11'-1"	—
h ₁ (E)	22 #5	8'-8"	—
p(E)	9 #7	38'-10"	—
s ₂ (E)	36 #4	11'-5"	□
u(E)	8 #6	9'-3"	□
v ₁ (E)	76 #5	4'-4"	—
v ₂ (E)	22 #5	11'-5"	—
Structure Excavation	Cu. Yd.	190	
Concrete Structures	Cu. Yd.	16.9	
Reinforcement Bars, Epoxy Coated	Pound	2160	
Furnishing Steel Piles HP12x53	Foot	240	
Driving Steel Piles	Foot	240	



PILE ENCASEMENT DETAIL



Order v₂(E) bars full length. Cut as shown and use remainder of bars in opposite face.

NORTH ABUTMENT
F.A.P. RT. 315 SEC. 18B-1
FULTON COUNTY
STATION 84+17.00
STRUCTURE NO. 029-0060

DESIGNED	Stephen M. Ryan
CHECKED	SJB & SEM
DRAWN	R. Doty DMG
CHECKED	SMR/SJB/SEM

APR 11 2005

EXAMINED *Thomas J. Damagala*
ENGINEER OF BRIDGE DESIGN

PASSED *Ralph E. Anderson*
ENGINEER OF BRIDGES AND STRUCTURES

PILE DATA

Type: Steel HP12x53
Capacity: Driven to refusal
Est. Length: 40'
No. Required: 6