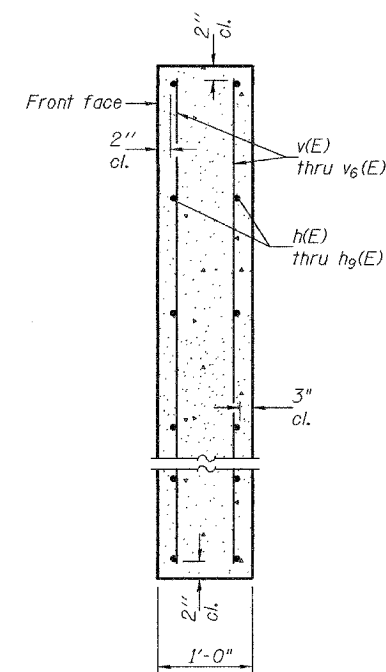
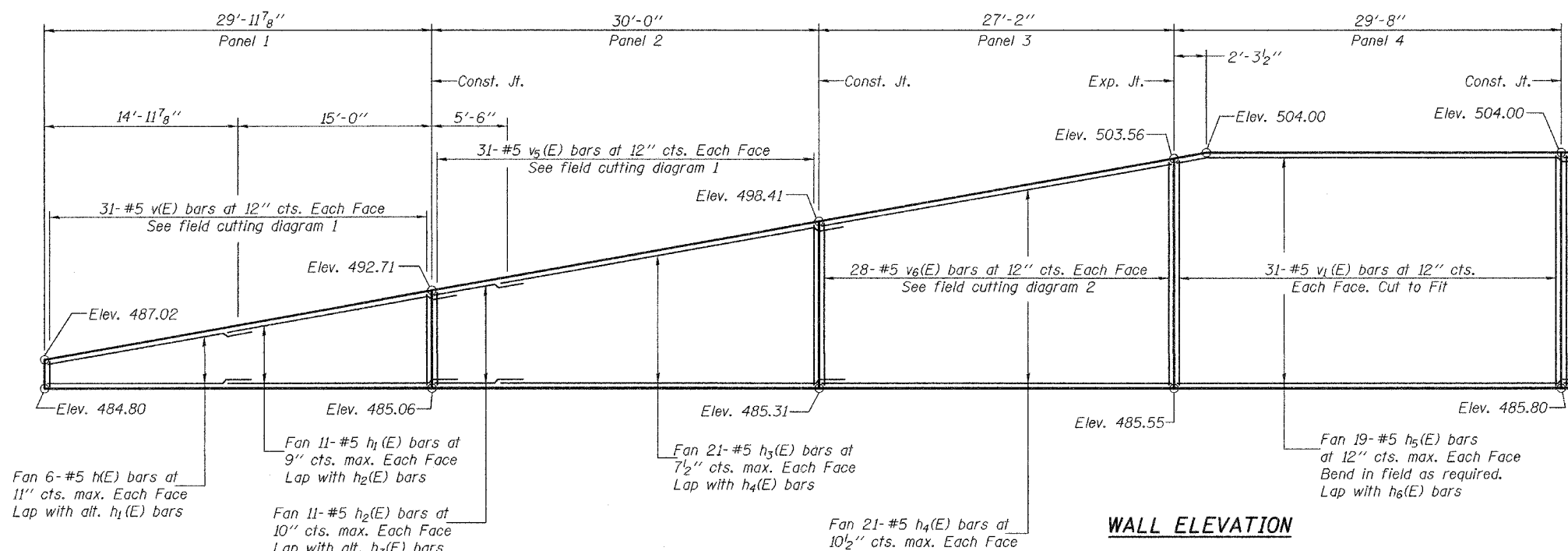


STATE OF ILLINOIS  
DEPARTMENT OF TRANSPORTATION

ROUTE NO. 315	SECTION *	COUNTY FULTON	SHEETS 9	SHEET NO. 5
FED. ROAD DIST. NO. 7		ILLINOIS	FED. AID PROJECT-	

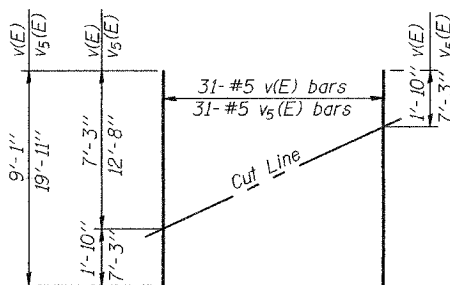
Contract #88753  
\*18RS-2, 19RS-3, (18BRY & 18BRY-1) BR. 18B-1



**BILL OF MATERIAL**

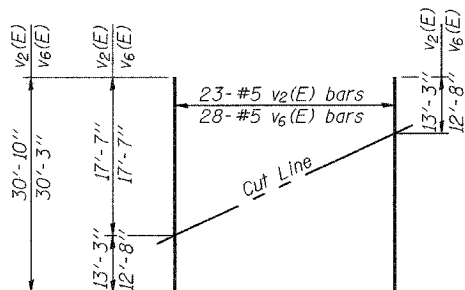
Bar	No.	Size	Length	Shape
h(E)	12	#5	18'-2"	---
h1(E)	22	#5	18'-4"	---
h2(E)	22	#5	8'-6"	---
h3(E)	42	#5	27'-11"	---
h4(E)	42	#5	27'-5"	---
h5(E)	38	#5	32'-9"	---
h6(E)	38	#5	32'-6"	---
h7(E)	38	#5	24'-9"	---
h8(E)	38	#5	30'-10"	---
h9(E)	20	#5	20'-0"	---
v(E)	31	#5	9'-1"	---
v1(E)	128	#5	17'-8"	---
v2(E)	23	#5	30'-10"	---
v3(E)	28	#5	21'-3"	---
v4(E)	21	#5	12'-2"	---
v5(E)	31	#5	19'-11"	---
v6(E)	28	#5	30'-3"	---
Reinforcement Bars, Epoxy Coated			Pound	14,280
Concrete Structures			Cu. Yd.	96.0

Reinforcement bars designated (E) shall be epoxy coated.



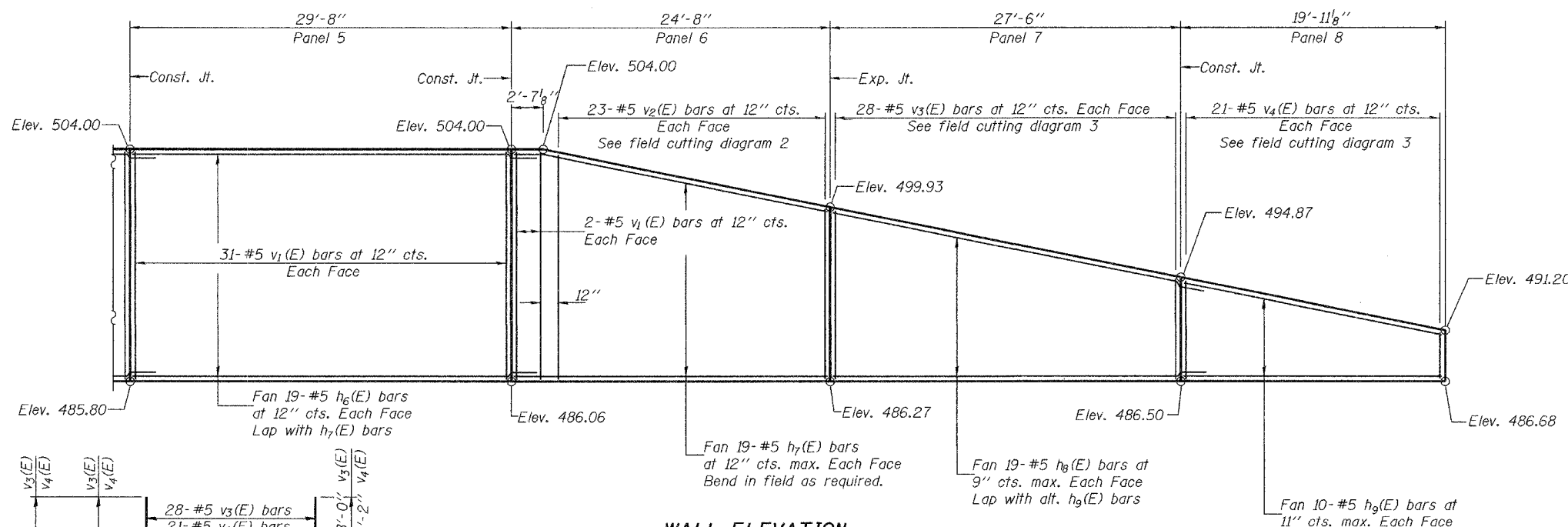
**FIELD CUTTING DIAGRAM 1**

Order v(E) and v5(E) full length. Cut as shown and use remainder of bars in opposite face.

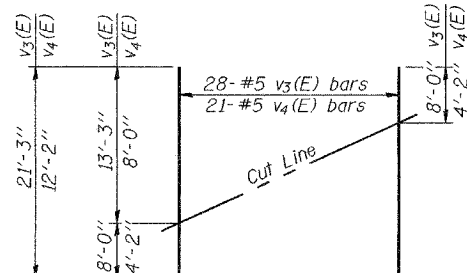


**FIELD CUTTING DIAGRAM 2**

Order v2(E) and v6(E) full length. Cut as shown and use remainder of bars in opposite face.



**WALL ELEVATION**



**FIELD CUTTING DIAGRAM 3**

Order v3(E) and v4(E) full length. Cut as shown and use remainder of bars in opposite face.

**MIN. BAR LAPS**

#5 bar = 3'-0"

DESIGNED	DFZ & SMR
CHECKED	MDS & SEM
DRAWN	DECKY M. CURRY
CHECKED	DFZ, SMR & SEM

APPROVED	April 28, 2005
EXAMINED	Thomas J. Demagala
PASSED	Ralph E. Anderson

**CONCRETE FACING FOR SOLDIER PILE WALL**

F.A.P. RTE. 315 - SEC. 18RS-2, 19RS-3,

(18BRY & 18BRY-1) BR. 18B-1

FULTON COUNTY

LT. STATION 79+60 to 81+80

STRUCTURE NO. 029-W500