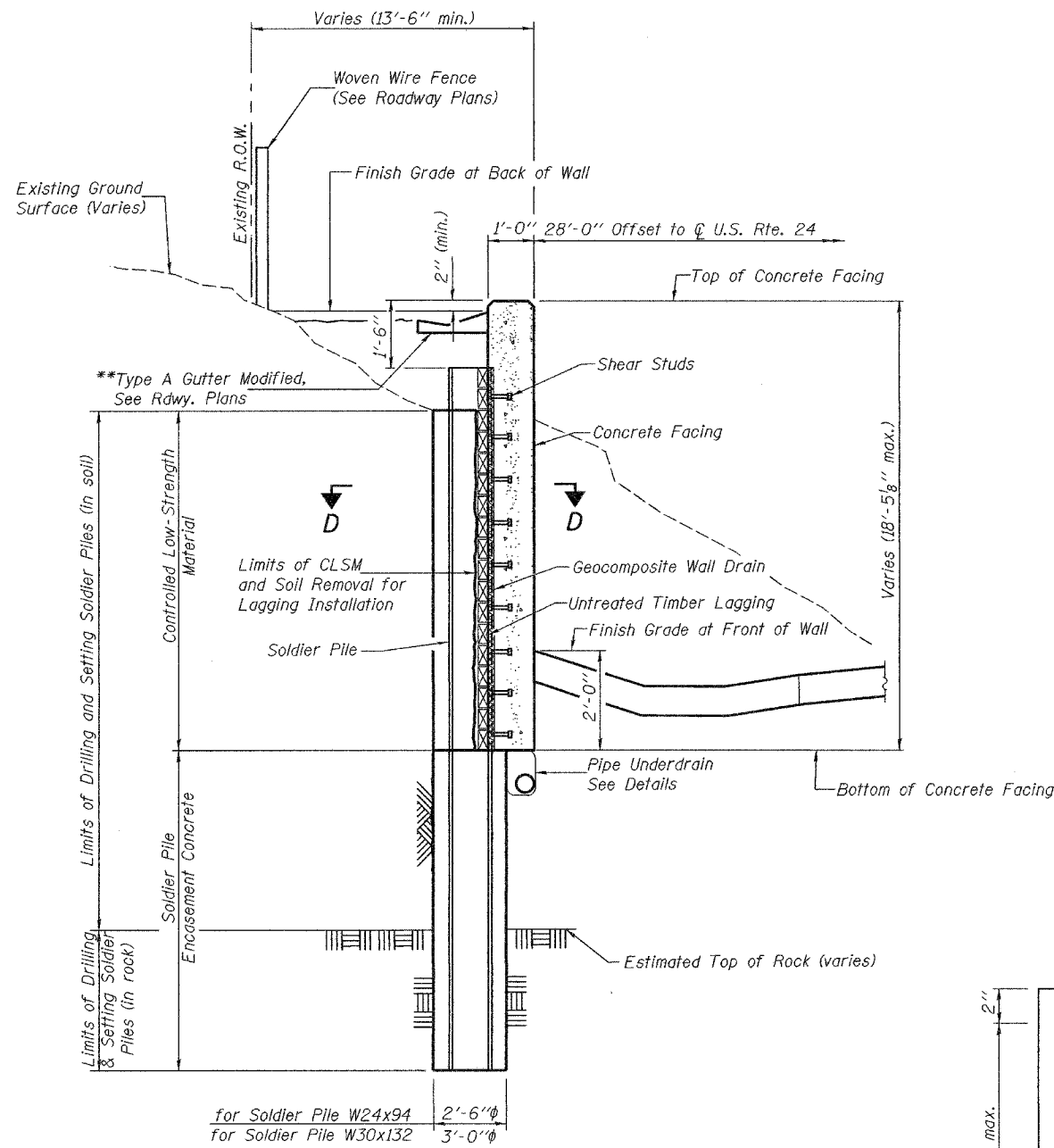


STATE OF ILLINOIS  
DEPARTMENT OF TRANSPORTATION

ROUTE NO. F.A.P. 315	SECTION #	COUNTY FULTON	FED. AID PROJECT	SHEET NO. 9	SHEETS 9
----------------------------	--------------	------------------	------------------	----------------	-------------

Contract #88753  
\*18RS-2, 19RS-3, (18BRY & 18BRY-1) BR. 18B-1



SECTION B-B

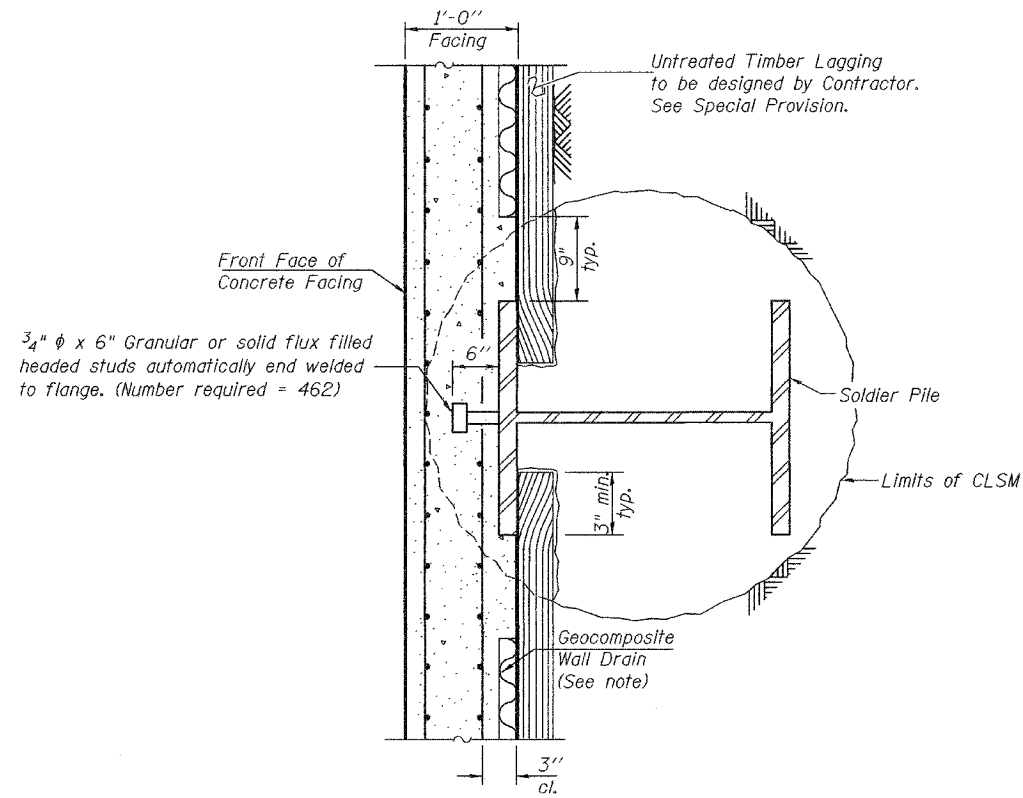
\*\* For details of Paved Ditch (special) at South end of wall, See Rdwy. Plans.

DESIGNED	DFZ & SMR
CHECKED	MDS & SEM
DRAWN	BECKY M. CURRY
CHECKED	DFZ, SMR & SEM

APR 26 2005

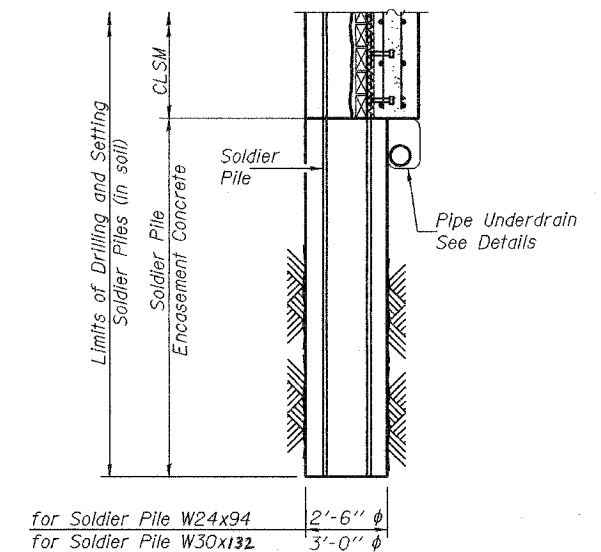
EXAMINED *Thomas J. Damgalaki*  
ENGINEER OF RECORD

PASSED *Ralph E. Anderson*  
ENGINEER OF BRIDGES AND STRUCTURES



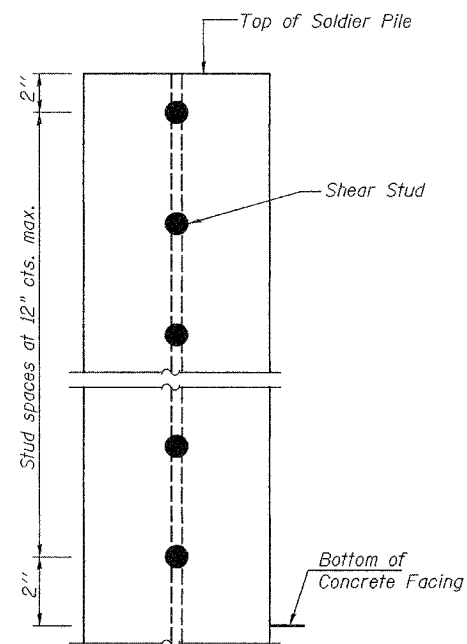
SECTION D-D

Note: Geocomposite Wall Drain shall not have a thickness greater than 1".



SECTION C-C

For remainder of details, see Section B-B.



SHEAR STUD DETAIL  
(Elevation of pile shown)

**SOLDIER PILE WALL DETAILS**  
F.A.P. RTE. 315 - SEC. 18RS-2, 19RS-3,  
(18BRY & 18BRY-1) BR. 18B-1  
FULTON COUNTY  
LT. STATION 79+60 to 81+80  
STRUCTURE NO. 029-W500