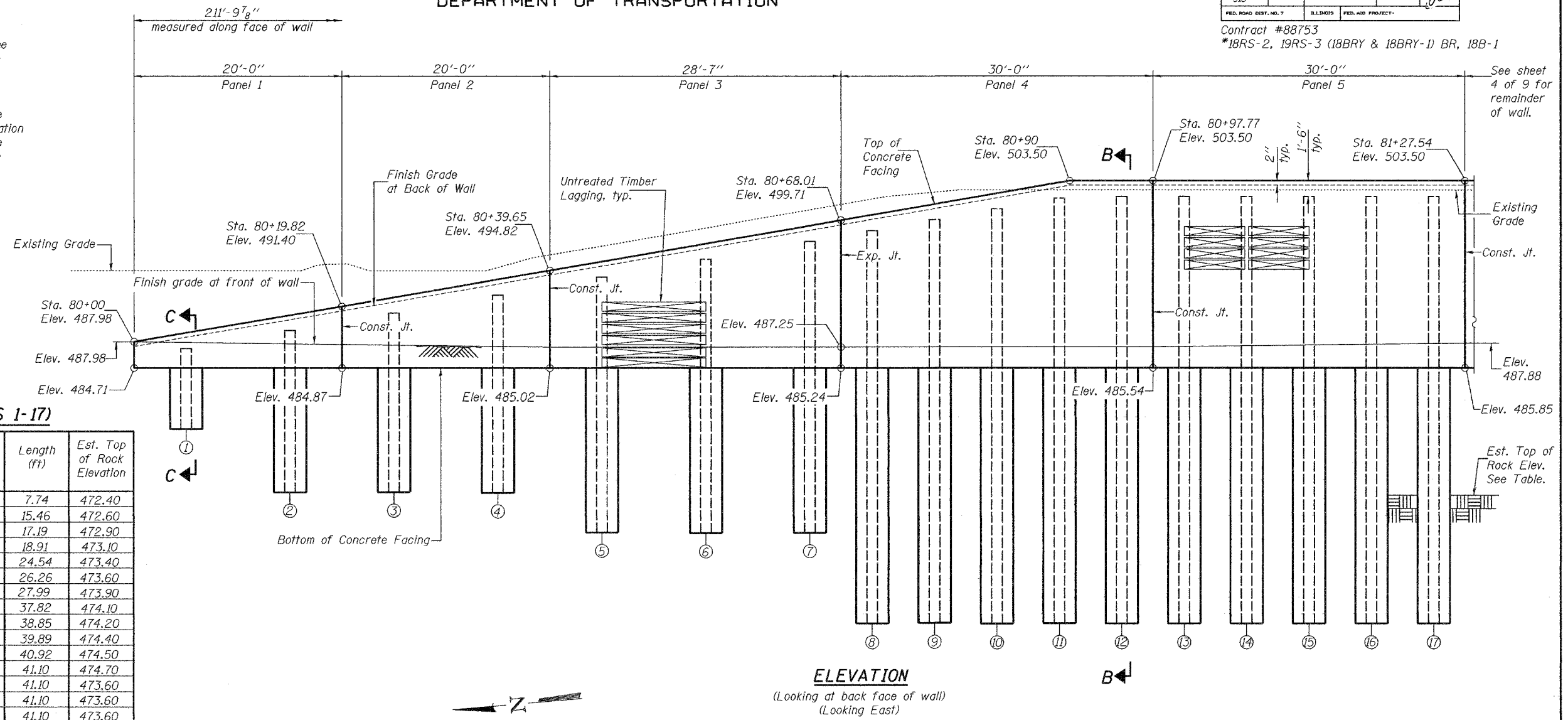


STATE OF ILLINOIS
DEPARTMENT OF TRANSPORTATION

ROUTE NO. 315	SECTION #	COUNTY FULTON	SHEET NO. 234	SHEET NO. 3
F.A.P. #				9 SHEETS
FED. ROAD DIST. NO. 7		ILLINOIS FED. AID PROJECT-		

Contract #88753
*18RS-2, 19RS-3 (18BRY & 18BRY-1) BR, 18B-1

Notes:
Where the existing ground line is higher than the finish grade line at back of wall, earth excavation behind the wall (to approximately the finish grade at back of wall) shall be done prior to drilling the shaft excavation.
Where the existing ground line is lower than the finish grade line at back of wall, the shaft excavation shall be drilled prior to placing embankment to the finish grade at back of wall. Embankment shall be placed against the rear face of lagging and compacted within 6 ft. behind the wall with lightweight mechanical tamper, roller or vibratory system to minimize deflection of the soldier piles.

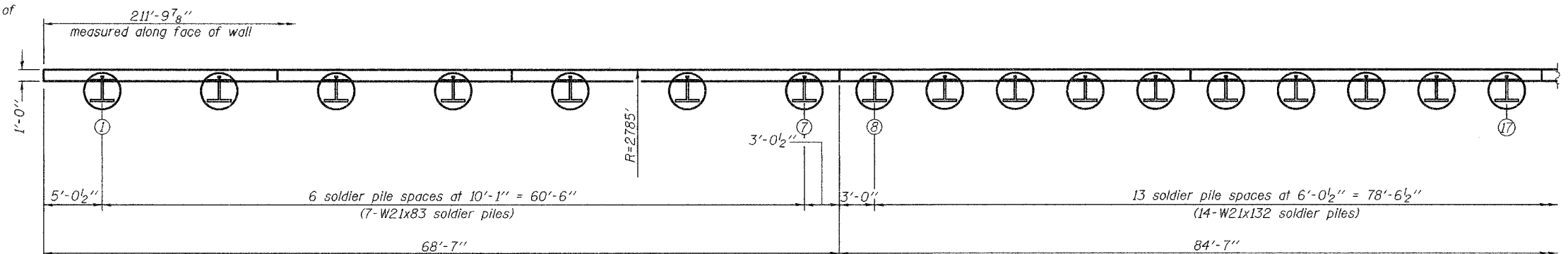


SOLDIER PILE SUMMARY (PILES 1-17)

Pile #	Station	Offset Rt. (ft.)	Top of Pile Elevation (ft)	**Bottom of Pile Elevation (ft)	Length (ft)	Est. Top of Rock Elevation
1	80+04.99	37.313	487.34	479.60	7.74	472.40
2	80+14.99	36.863	489.06	473.60	15.46	472.60
3	80+24.98	36.472	490.79	473.60	17.19	472.90
4	80+34.98	36.139	492.51	473.60	18.91	473.10
5	80+44.98	35.865	494.24	469.70	24.54	473.40
6	80+54.99	35.650	495.96	469.70	26.26	473.60
7	80+64.99	35.493	497.69	469.70	27.99	473.90
8	80+70.99	35.427	498.72	460.90	37.82	474.10
9	80+76.98	35.382	499.75	460.90	38.85	474.20
10	80+82.98	35.359	500.79	460.90	39.89	474.40
11	80+88.97	35.356	501.82	460.90	40.92	474.50
12	80+94.97	35.374	502.00	460.90	41.10	474.70
13	81+00.96	35.414	502.00	460.90	41.10	473.60
14	81+06.96	35.474	502.00	460.90	41.10	473.60
15	81+12.95	35.555	502.00	460.90	41.10	473.60
16	81+18.94	35.658	502.00	460.90	41.10	473.70
17	81+24.94	35.781	502.00	460.90	41.10	473.70

Each shaft shall be excavated to the elevation specified in the table for "Bottom of Pile Elevation". This elevation may be above or below the encountered top of rock elevation. There is no minimum required embedment in rock.

**Bottom of shaft excavation.



PLAN

Notes:
See sheet 5 of 9 for concrete facing details.
See sheet 6 of 9 for Section B-B and C-C.
See sheet 6 & 7 of 9 for soldier pile wall details.

DESIGNED	DFZ
CHECKED	SMR
DRAWN	BECKY M. CURRY
CHECKED	DFZ, SMR & SEM

April 28, 2005
EXAMINED *Thomas J. Damagala*
PASSED *Ronald E. Anderson*
ENGINEER OF BRIDGES AND STRUCTURES

SOLDIER PILE WALL
F.A.P. RTE. 315 - SEC. 18RS-2, 19RS-3,
(18BRY & 18BRY-1) BR, 18B-1
FULTON COUNTY
RT. STATION 80+00 to 82+10
STRUCTURE NO. 029-W501