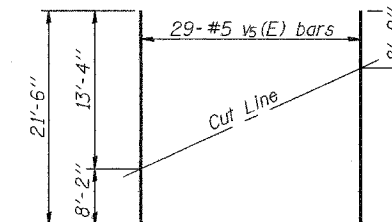
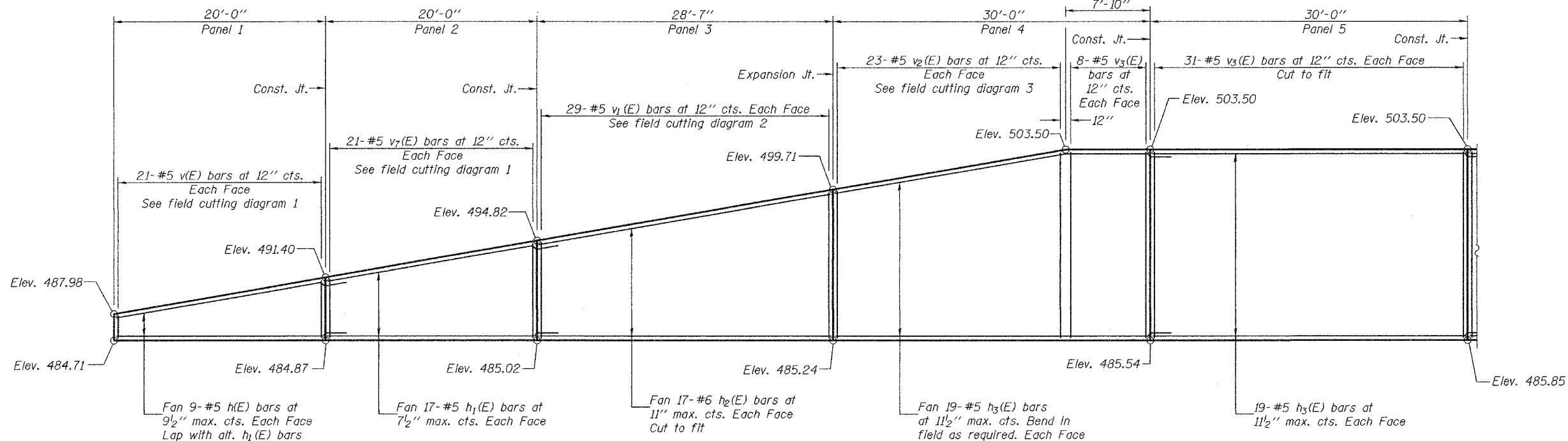


STATE OF ILLINOIS
DEPARTMENT OF TRANSPORTATION

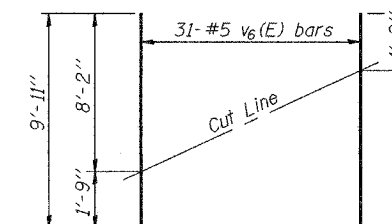
ROUTE NO.	SECTION	COUNTY	DATE	SHEET NO.
F.A.P. 315	#	FULTON		234
FED. ROAD DIST. NO. 7	ILLINOIS	FED. AID PROJECT		

SHEET NO. 5
9 SHEETS

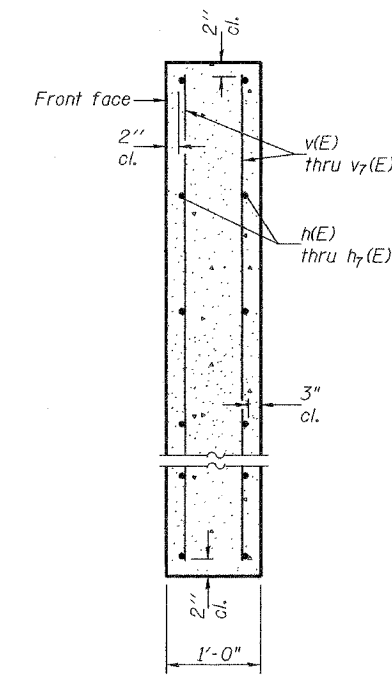
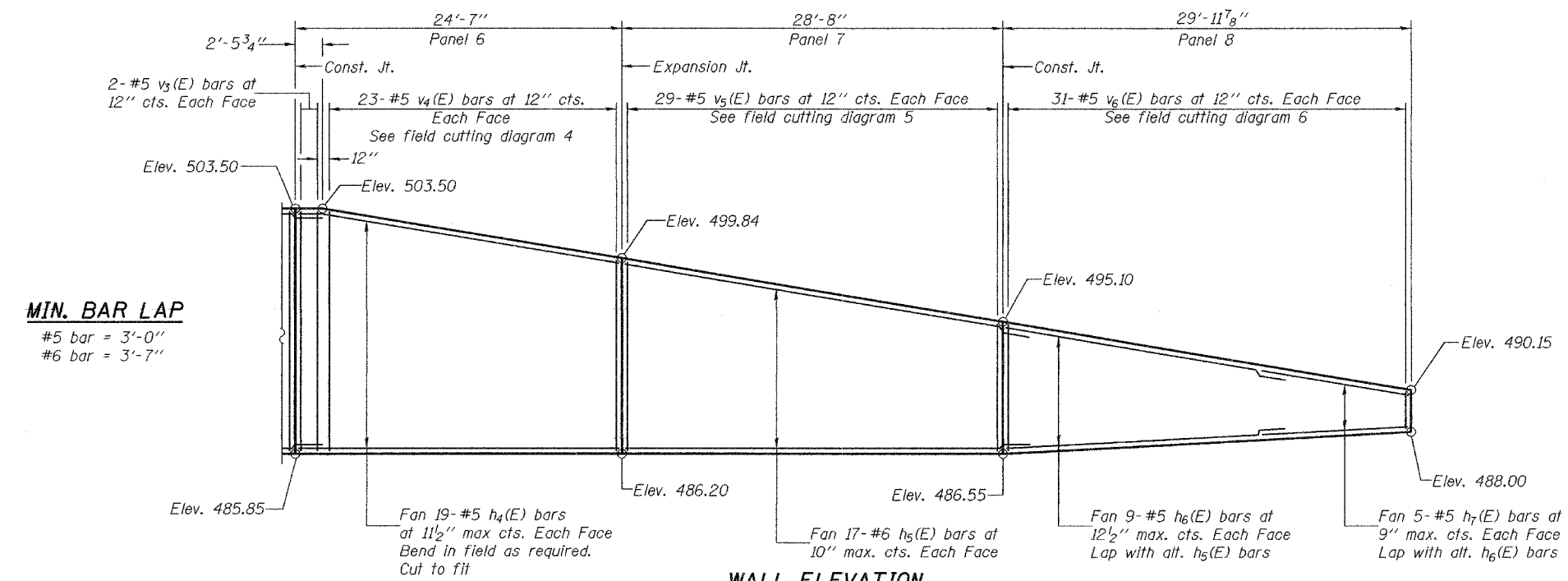
Contract #88753
*18RS-2, 19RS-3 (18BRY & 18BRY-1) BR, 18B-1



FIELD CUTTING DIAGRAM 5
Order v₅(E) full length. Cut as shown and use remainder of bars in opposite face.



FIELD CUTTING DIAGRAM 6
Order v₆(E) full length. Cut as shown and use remainder of bars in opposite face.



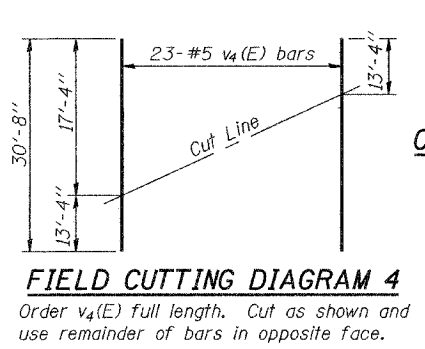
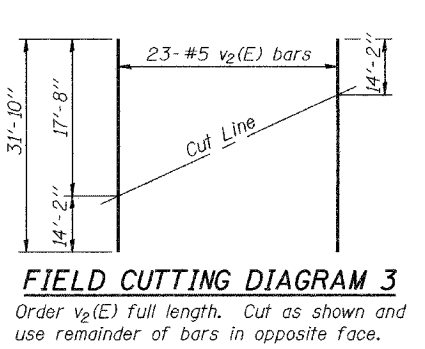
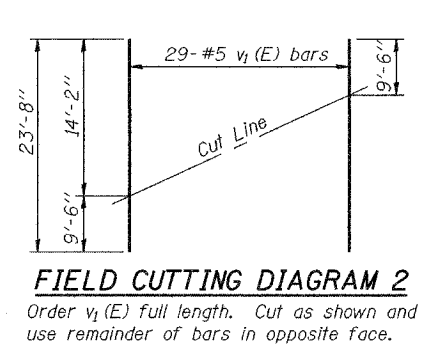
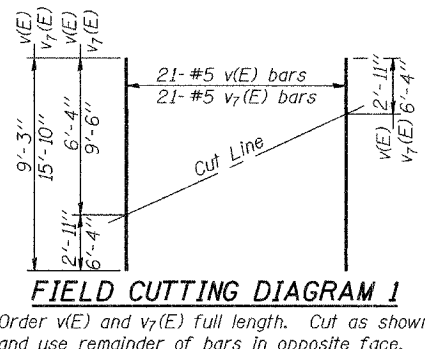
SECTION THRU CONCRETE FACING

MIN. BAR LAP
#5 bar = 3'-0"
#6 bar = 3'-7"

BILL OF MATERIAL

Bar	No.	Size	Length	Shape	
h(E)	18	#5	23'-2"	---	
h ₁ (E)	34	#5	23'-9"	---	
h ₂ (E)	34	#6	28'-9"	---	
h ₃ (E)	76	#5	33'-4"	---	
h ₄ (E)	38	#5	24'-8"	---	
h ₅ (E)	34	#6	32'-8"	---	
h ₆ (E)	18	#5	24'-10"	---	
h ₇ (E)	10	#5	8'-8"	---	
v(E)	21	#5	9'-3"	---	
v ₁ (E)	29	#5	23'-8"	---	
v ₂ (E)	23	#5	31'-10"	---	
v ₃ (E)	82	#5	17'-9"	---	
v ₄ (E)	23	#5	30'-8"	---	
v ₅ (E)	29	#5	21'-6"	---	
v ₆ (E)	31	#5	9'-11"	---	
v ₇ (E)	21	#5	15'-10"	---	
Reinforcement Bars, Epoxy Coated				Pound	13,840
Concrete Structures				Cu. Yd.	87.3

Reinforcement bars designated (E) shall be epoxy coated.



CONCRETE FACING FOR SOLDIER PILE WALL
F.A.P. RTE. 315 - SEC. 18RS-2, 19RS-3,
(18BRY & 18BRY-1) BR, 18B-1
FULTON COUNTY
RT. STATION 80+00 to 82+10
STRUCTURE NO. 029-W501

DESIGNED	DFZ
CHECKED	SMR
DRAWN	BECKY M. CURRY
CHECKED	DFZ, SMR & SEM

APR 28, 2005
EXAMINED *Thomas J. Damagala*
ENGINEER OF BRIDGE DESIGN
PASSED *Ralph E. Anderson*
ENGINEER OF BRIDGES AND STRUCTURES