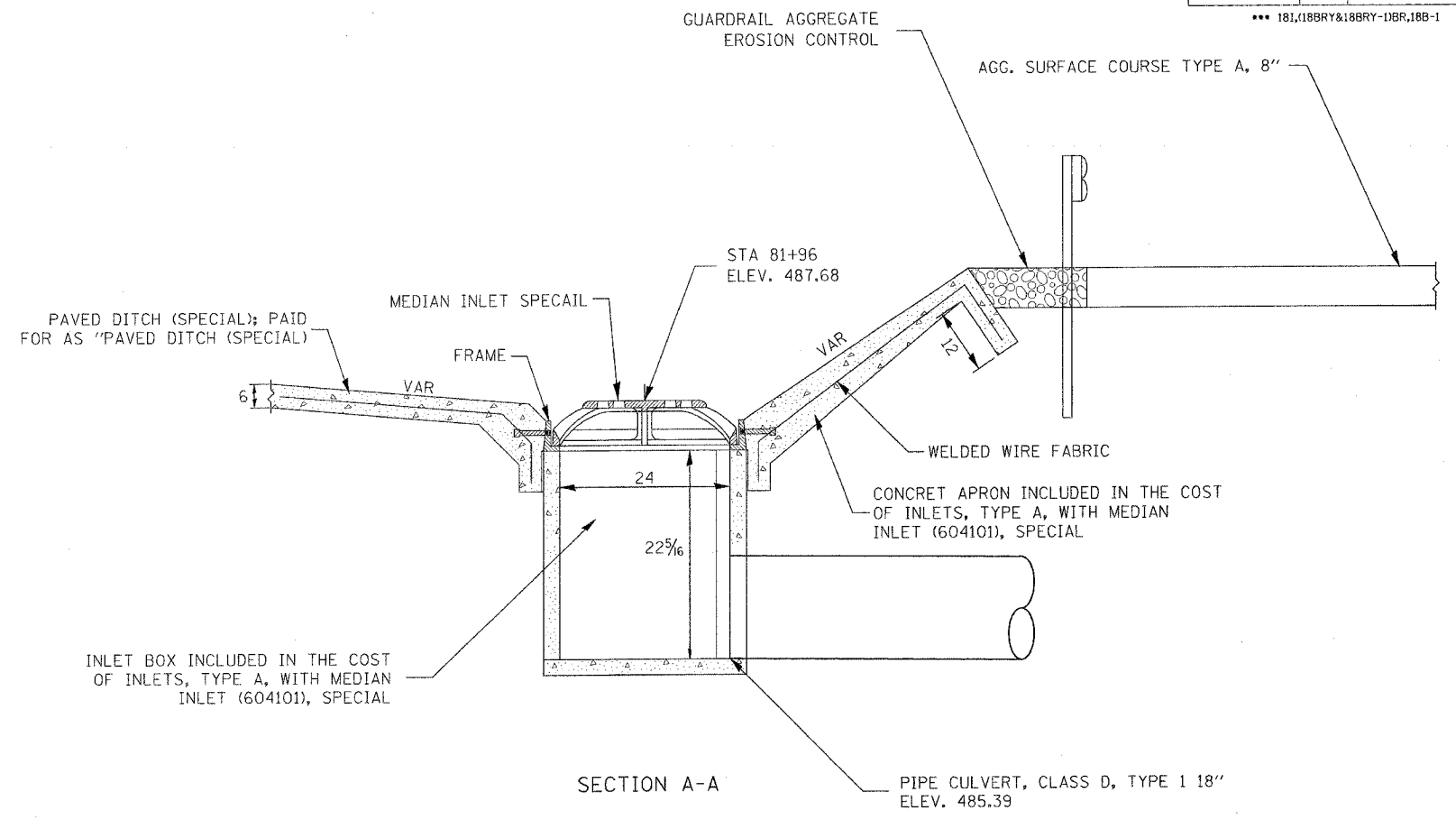
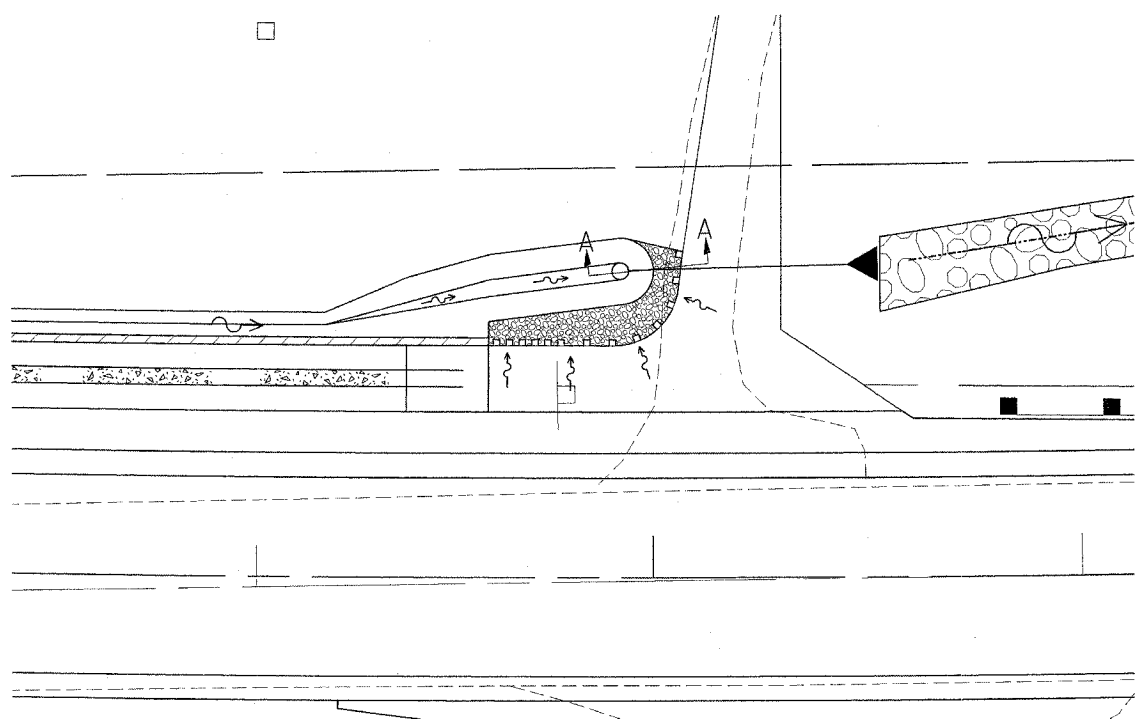


F.A.P. RTE.	SECTION	COUNTY	TOTAL SHEETS	SHEET NO.
317	***	FULTON	684	246
STA.		TO STA.		
FED. ROAD DIST. NO.		ILLINOIS FED. AID PROJECT		
*** 181,188RY&188RY-138R,188-1				



PAVED DITCH (SPECIAL); PAID FOR AS "PAVED DITCH (SPECIAL)

INLET BOX INCLUDED IN THE COST OF INLETS, TYPE A, WITH MEDIAN INLET (604101), SPECIAL

SECTION A-A

GENERAL NOTES

1. The applicable portions of Highway Standards 604101 and/or 604106 shall apply, except as noted herein.

REVISIONS		ILLINOIS DEPARTMENT OF TRANSPORTATION
NAME	DATE	
		INLETS, TYPE A, WITH MEDIAN INLET (604101), SPECIAL DETAIL
SCALE:	VERT. DATE	DRAWN BY
HORIZ.		CHECKED BY

PLOT DATE = 4/7/2005
 FILE NAME = c:\projects\va24\pason.ph\2\dsail_medianninletspecial.dgn
 USER NAME = paggano