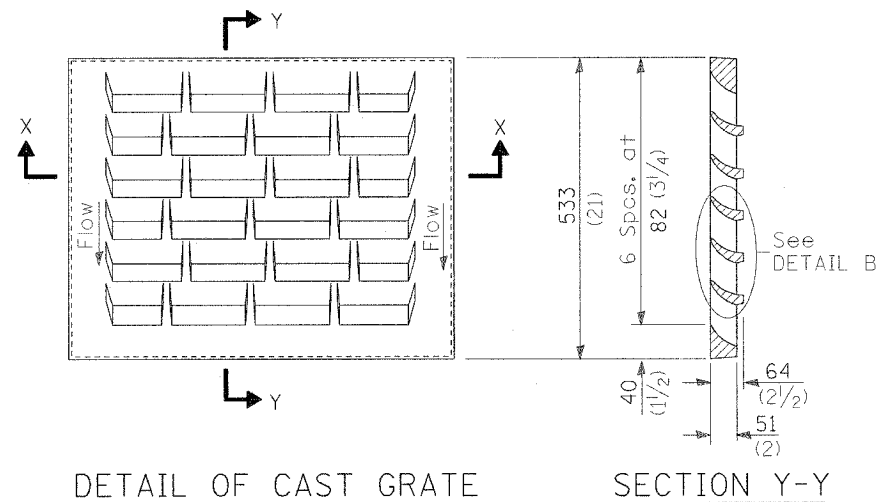


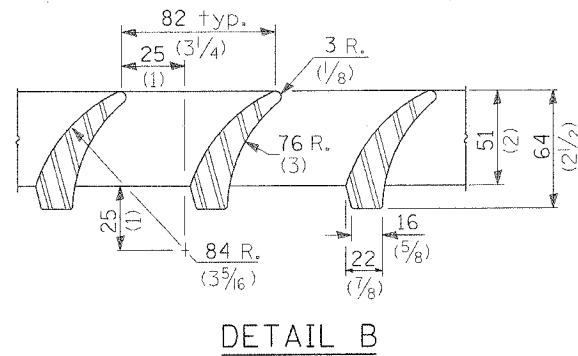
F.A.P. RTE.	SECTION	COUNTY	TOTAL SHEETS	SHEET NO.
317	...	FULTON	634	248
STA.		TO STA.		
FED. ROAD DIST. NO.		ILLINOIS FED. AID PROJECT		
... 181, (18BRY&18BBRY-1)BR, 18B-1				



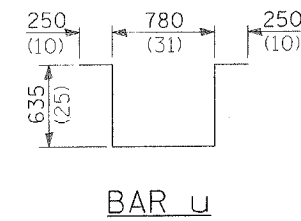
DETAIL OF CAST GRATE

Type B requires 1 grate
 Type C requires 2 grates
 Type D requires 3 grates

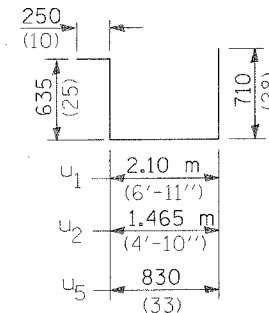
SECTION Y-Y



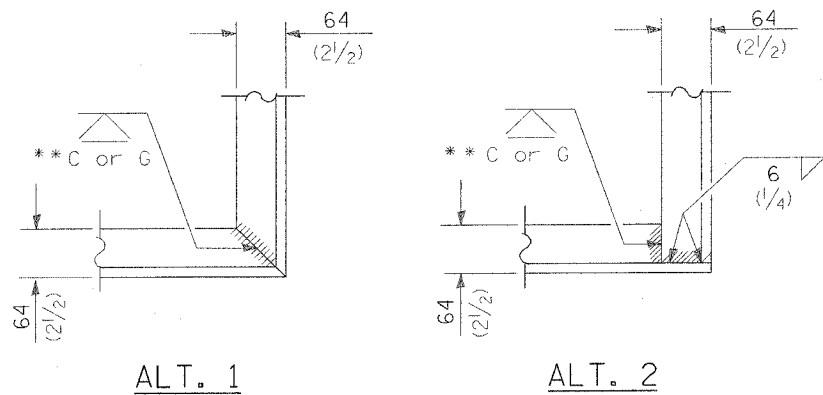
DETAIL B



BAR U



BARS U₁, U₂ & U₅

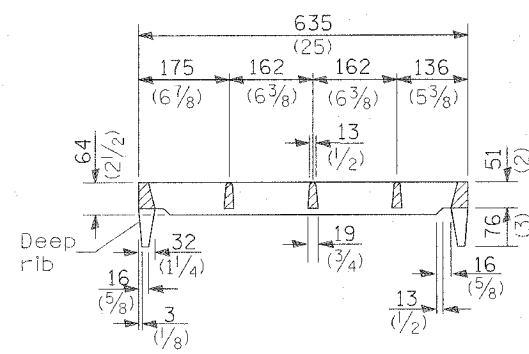


ALT. 1

ALT. 2

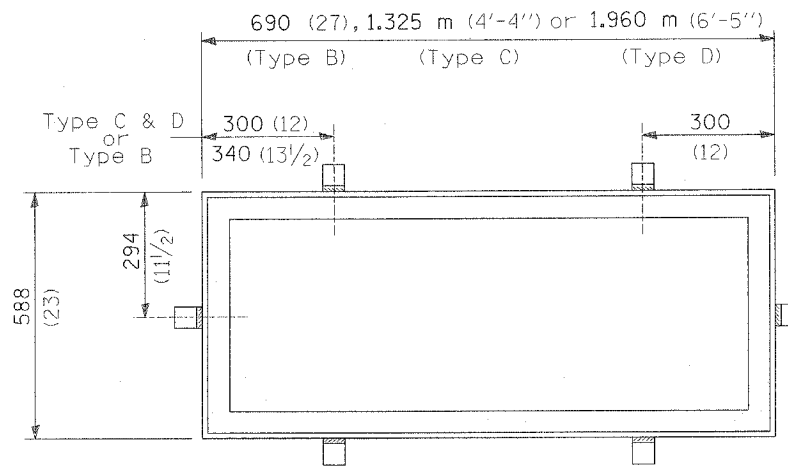
TYPICAL CORNER of STEEL GRATING FRAME

**Cut or Grind flush



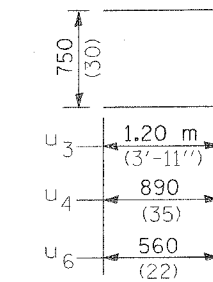
SECTION X-X

(Deep rib shall be omitted for end(s) resting on frame perimeter)



DETAIL OF STEEL FRAME

Cast frame to have same basic dimensions.



BARS U₃, U₄ & U₆

INLET BOX

REQUIRED MATERIAL

TYPE B			
Bar	Qty.	Size	Length
u	4	No. 15 (No.4)	2.550 m (8'-5")
u ₅	3	No. 15 (No.4)	2.425 m (8'-0")
u ₆	4	No. 15 (No.4)	1.870 m (6'-2")
Concrete	m ³ (cu. yds.)		0.4 (0.5)
Reinf. bars	kg (lbs.)		39.2 (55.0)
Grating	m ² (sq. ft.)		0.34 (3.6)
TYPE C			
Bar	Qty.	Size	Length
u	6	No. 15 (No.4)	2.550 m (8'-5")
u ₂	3	No. 15 (No.4)	3.060 m (10'-1")
u ₄	4	No. 15 (No.4)	2.530 m (8'-4")
Concrete	m ³ (cu. yds.)		0.6 (0.8)
Reinf. bars	kg (lbs.)		54.3 (76)
Grating	m ² (sq. ft.)		0.68 (7.3)
TYPE D			
Bar	Qty.	Size	Length
u	8	No. 15 (No.4)	2.550 m (8'-5")
u ₁	3	No. 15 (No.4)	3.695 m (12'-2")
u ₃	4	No. 15 (No.4)	3.150 m (10'-4")
Concrete	m ³ (cu. yds.)		0.8 (1.1)
Reinf. bars	kg (lbs.)		69.2 (97.0)
Grating	m ² (sq. ft.)		1.02 (10.9)

All dimensions are in millimeters (inches) unless otherwise shown.

REVISIONS	
NAME	DATE

ILLINOIS DEPARTMENT OF TRANSPORTATION
 BRIDGE APPROACH
 PAVEMENT
 DRAIN DETAIL

SCALE: VERT. HORIZ.
 DATE

(Sheet 2 of 2)

DRAWN BY
 CHECKED BY