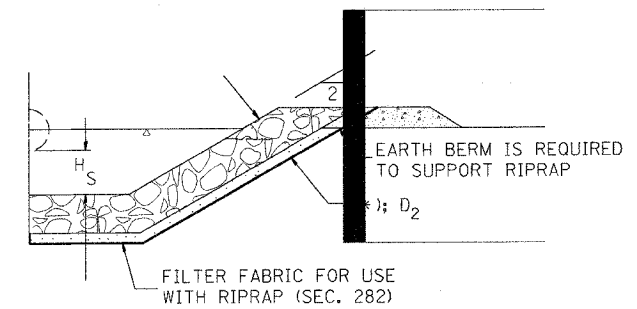
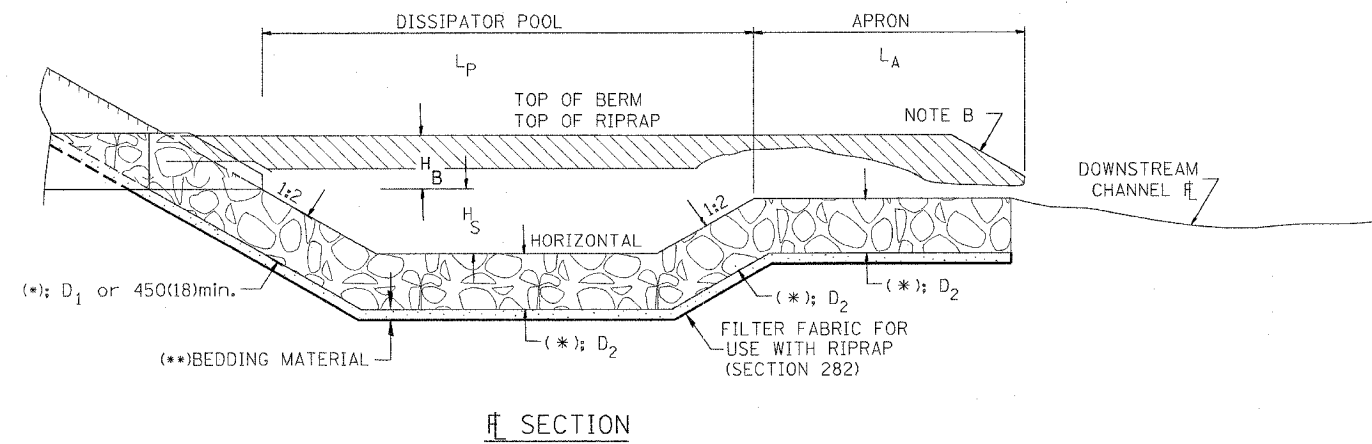
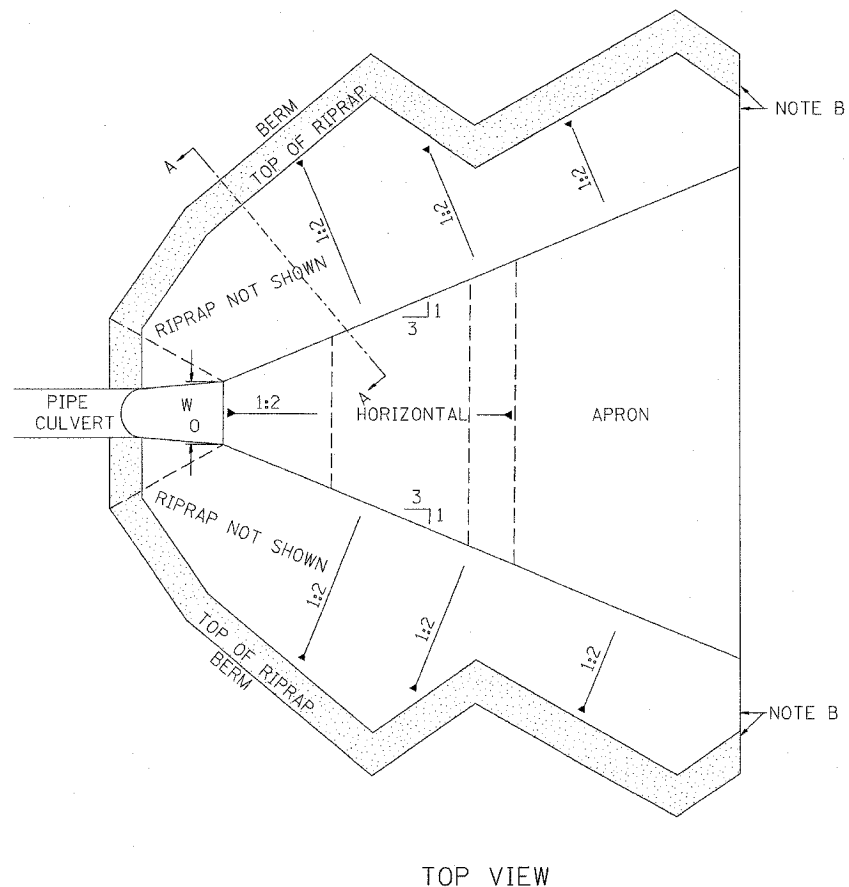


F.A. RTE.	SECTION	COUNTY	TOTAL SHEETS	SHEET NO.
115/317	***	FULTON	684	254
STA.		TO STA.		
FED. ROAD DIST. NO.	ILLINOIS	FED. AID PROJECT		
*** 181,188BRY&188BRY-1)BR.188-1 CONTRACT# 88753				



SECTION

SECTION A-A



TOP VIEW

STATION	(*)			(**)			(***)		
	W0	LP	LA	HS	HB	D1	D2	D3	

NOTE B: WARP BASIN TO CONFORM TO NATURAL STREAM CHANNEL

Designer NOTES:  
 1. Designer to modify this Special Detail Sheet, as needed for inclusion in plans.  
 2. (\*) Designer to specify pay item including material, quality, and gradation.  
 3. (\*\*) Designer to specify thickness of bedding material.  
 4. Include District Special Provision if needed.

All slope ratios are expressed as units of vertical displacement to units of horizontal displacement (V:H).  
 All dimensions are in millimeters (inches) unless otherwise noted.

DATE	REVISIONS	BY
1-1-97	RENUM. A-12.03. NEW REVISION BOX	T.P.

ILLINOIS DEPARTMENT OF TRANSPORTATION  
 SPECIAL DETAIL SHEET  
**RIPRAP ENERGY DISSIPATOR**  
 CADD DETAIL 281101-D4  
 SCALE: NOT DRAWN TO SCALE  
 DATE \*\*DATE\*\*  
 DRAWN BY CADD  
 CHECKED BY