

TWP.	COUNTY	SECTION	TWP. HWY. NO.	SHEET NO.	TOTAL SHEETS
TOULON	STARK	03-06114-00-SP	46	5	8

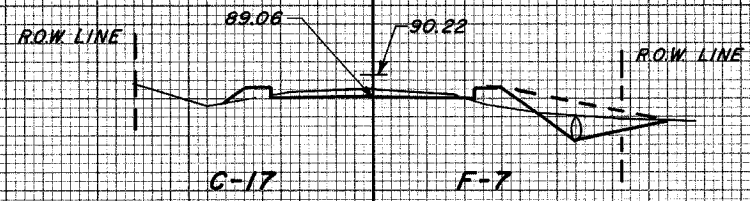
CONTRACT# 89305

DATE \_\_\_\_\_  
 BY \_\_\_\_\_  
 SURVEYED \_\_\_\_\_  
 PLOTTED \_\_\_\_\_  
 FINAL SURVEY \_\_\_\_\_  
 NOTE BOOK \_\_\_\_\_  
 NO. \_\_\_\_\_  
 AREAS CHECKED \_\_\_\_\_

DATE \_\_\_\_\_  
 BY \_\_\_\_\_  
 SURVEYED \_\_\_\_\_  
 PLOTTED \_\_\_\_\_  
 ORIGINAL SURVEY \_\_\_\_\_  
 NOTE BOOK \_\_\_\_\_  
 NO. \_\_\_\_\_  
 AREAS CHECKED \_\_\_\_\_

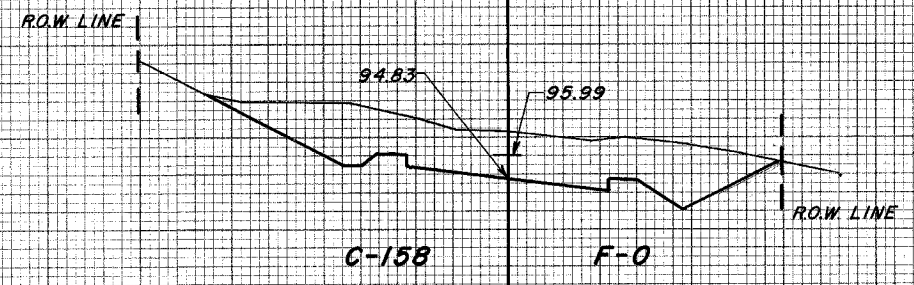
98  
+  
00

89  
ENT. RT. 98+00  
15" X 40' CULVERT



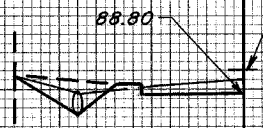
101  
+  
00

97



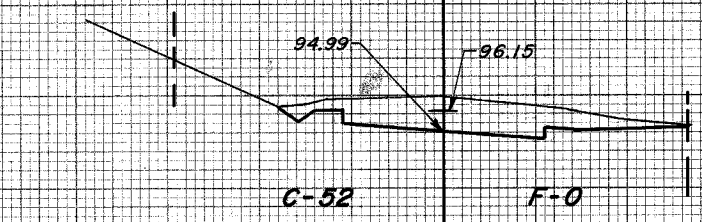
97  
+  
80

89  
ENT. RT. 97+80  
15" X 40' CULVERT



100  
+  
55

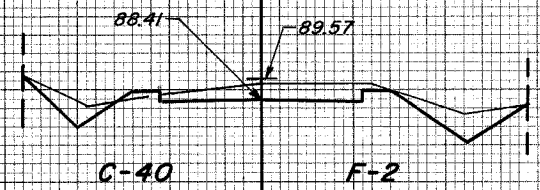
97



SUPER = 0.035 / FT.  
0.42' ±

97  
+  
50

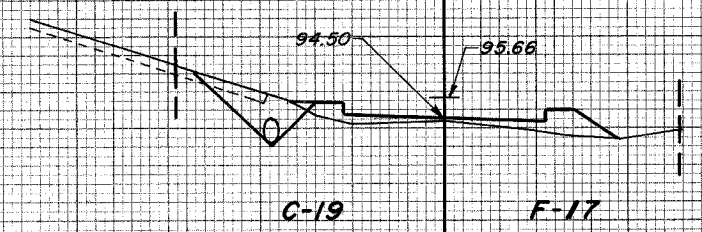
89



100  
+  
00

94

ENT. LT. 100+00  
15" X 40' CULVERT

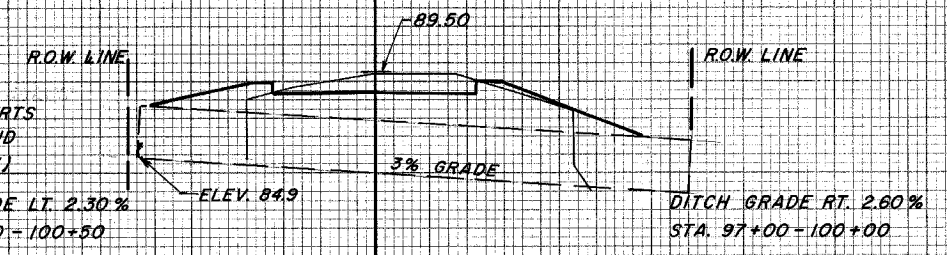


BEGIN  
SUPER = 0.015  
0.18' ±

97  
+  
00

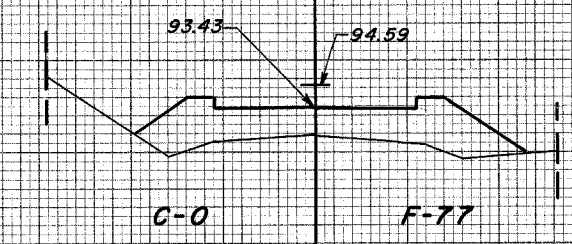
89  
INSTALL 2 - 36" X 80' CULVERTS  
WITH RIPRAP AT EACH END  
OF CULVERTS (ON SKEW)

DITCH GRADE LT. 2.30%  
STA. 97+00 - 100+50



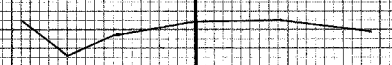
99  
+  
50

91



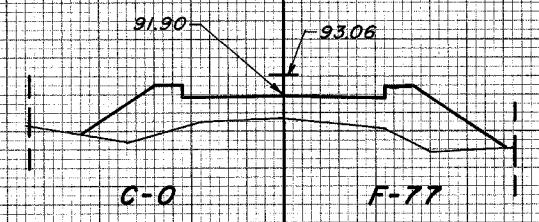
96  
+  
50

89



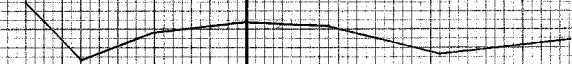
99  
+  
00

90



96  
+  
00

89



98  
+  
50

89

