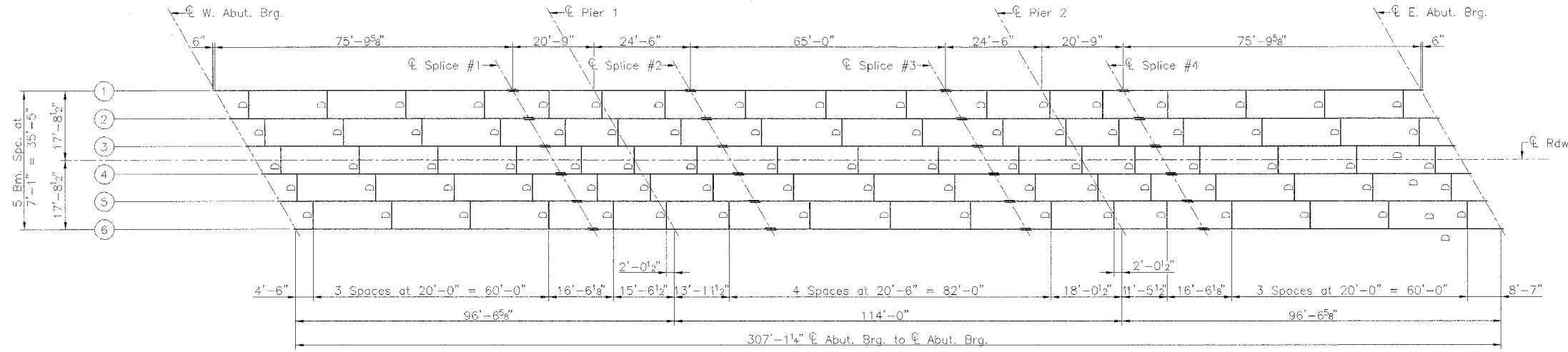
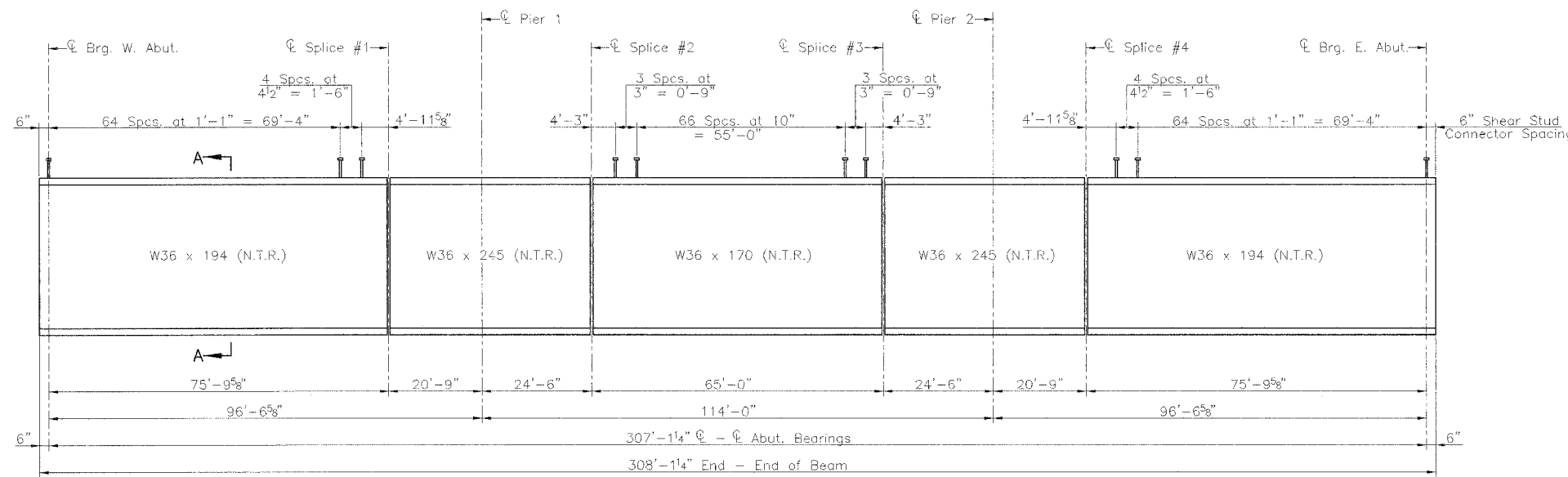


RTE.	SECTION	COUNTY	TOTAL SHEETS	SHEET NO.
C.H. 40	*	SANGAMON	33	12
PROJECT				

* 00-00021-02-BR

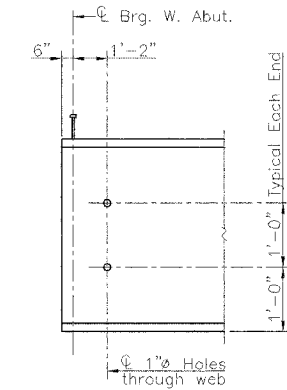


FRAMING PLAN

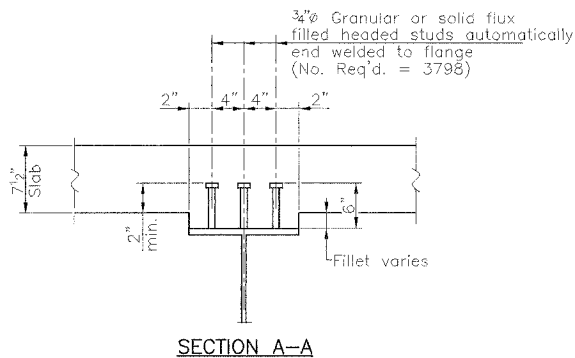


ELEVATION

Notes:
 N.T.R. denotes beams to which Notch Toughness requirements are applicable.
 All structural steel shall be A.A.S.H.T.O. M270, Grade 50.



ELEVATION AT END OF BEAM



SECTION A-A

TOP OF BEAM ELEVATIONS

LOCATION	Beam #1	Beam #2	Beam #3	Beam #4	Beam #5	Beam #6
W. Abut. Brg.	585.55	585.66	585.77	585.77	585.66	585.55
Splice #1	585.44	585.55	585.66	585.66	585.55	585.44
Pier #1	585.45	585.56	585.67	585.67	585.56	585.45
Splice #2	585.46	585.57	585.68	585.68	585.57	585.46
Splice #3	585.46	585.57	585.68	585.68	585.57	585.46
Pier #2	585.45	585.56	585.67	585.67	585.56	585.45
Splice #4	585.44	585.55	585.66	585.66	585.55	585.44
E. Abut. Brg.	585.55	585.66	585.77	585.77	585.66	585.55

Notes:
 Top of beam elevations are for fabrication only and do not include dead load deflections.

STRUCTURAL STEEL
 C.H. 40 OVER HORSE CREEK
 SECTION 00-00021-02-BR
 SANGAMON COUNTY