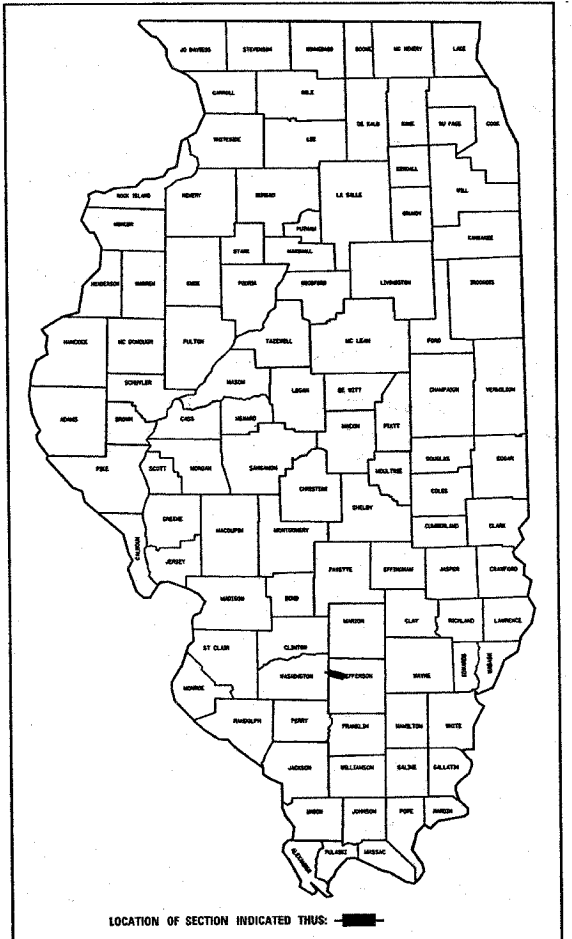


94860

FAI R/L	SECTION	COUNTY	TOTAL SHEETS	SHEET NO.
64		JEFFERSON	19	1

ILLINOIS FED. AID PROJECT NO.
 (41-6,41-6-1)RS-1
D-97-043-01



STATE OF ILLINOIS
 DEPARTMENT OF TRANSPORTATION

DIVISION OF HIGHWAYS

**PROPOSED
 HIGHWAY PLANS**

**FAI ROUTE 64 (I-64)
 SECTION (41-6,41-6-1)RS-1
 PROJECT: IM-064-3(083)060
 INTERSTATE RESURFACING
 JEFFERSON COUNTY**

C-97-009-05

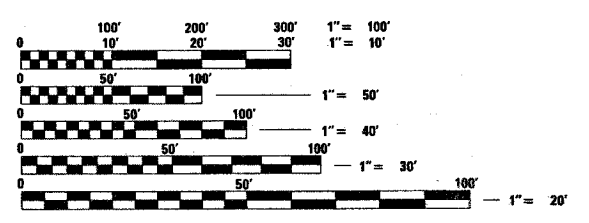
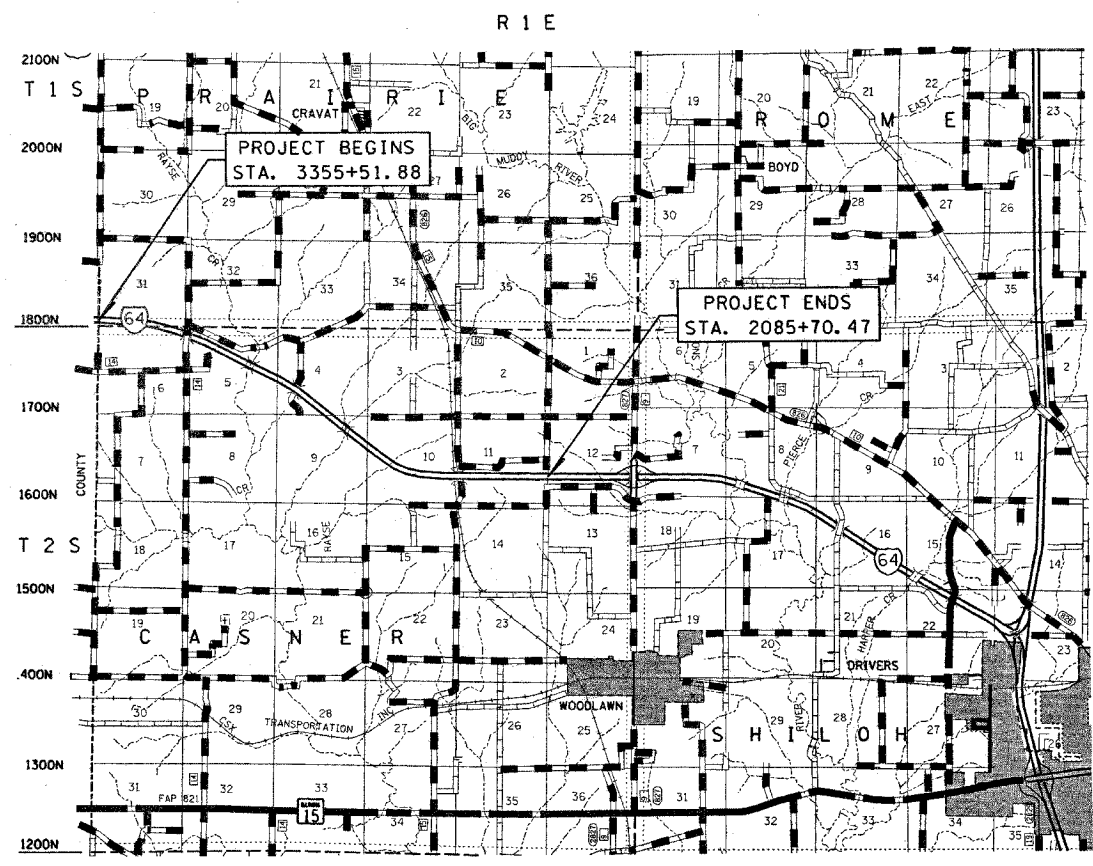
SEE SHEET 2 FOR INDEX OF SHEETS

BRIDGE OMISSIONS

- SN 041-0077
I-64 EB OVER TR 108A/ BUR NORTHERN
LENGTH = 257 FT
STA 2031+94.04
- SN 041-0078
I-64 WB OVER TR 108A/ BUR NORTHERN
LENGTH = 257 FT
STA 2031+94.04
- SN 041-0085
I-64 EB OVER RAYSE CREEK
LENGTH = 131.5 FT
STA 1890+94
- SN 041-0086
I-64 WB OVER RAYSE CREEK
LENGTH = 131.5 FT
STA 1890+94

STATION EQUATION

STA 3423+00 BK = STA 1862+44.22 AH



FULL SIZE PLANS HAVE BEEN PREPARED USING STANDARD ENGINEERING SCALES, REDUCED SIZED PLANS WILL NOT CONFORM TO STANDARD SCALES, IN MAKING MEASUREMENTS ON REDUCED PLANS, THE ABOVE SCALES MAY BE USED.

J.U.L.I.E.
 JOINT UTILITY LOCATION INFORMATION FOR EXCAVATION
 1-800-892-0123

STATE OF ILLINOIS
 DEPARTMENT OF TRANSPORTATION
 DIVISION OF HIGHWAYS

SUBMITTED MARCH 29 20 05

Christine M. Sand DISTRICT ENGINEER

 20

ENGINEER OF PROJECT DEVELOPMENT AND IMPLEMENTATION

May 13 20 05
Mike Sine
 ENGINEER OF DESIGN AND ENVIRONMENT

May 13 20 05
Victor Modest
 DIRECTOR, DIVISION OF HIGHWAYS

PRINTED BY THE AUTHORITY OF
 THE STATE OF ILLINOIS

SEAL

CONTRACT NO. 94860

ADT (2003) = 20,900

GROSS LENGTH = 29074.37 FEET = 5.51 MILES
 NET LENGTH = 28685.87 FEET = 5.43 MILES

PROJECT ENGINEER : MARK DAUGHERTY
 SQUAD LEADER : KRISTI SANDSCHAFER
 DESIGNER : KRISTI SANDSCHAFER
 TELEPHONE : 217/342-3951 EX 313
 steffemk
 3/29/2005
 c:\projects\94860\d\04301pa.dgn