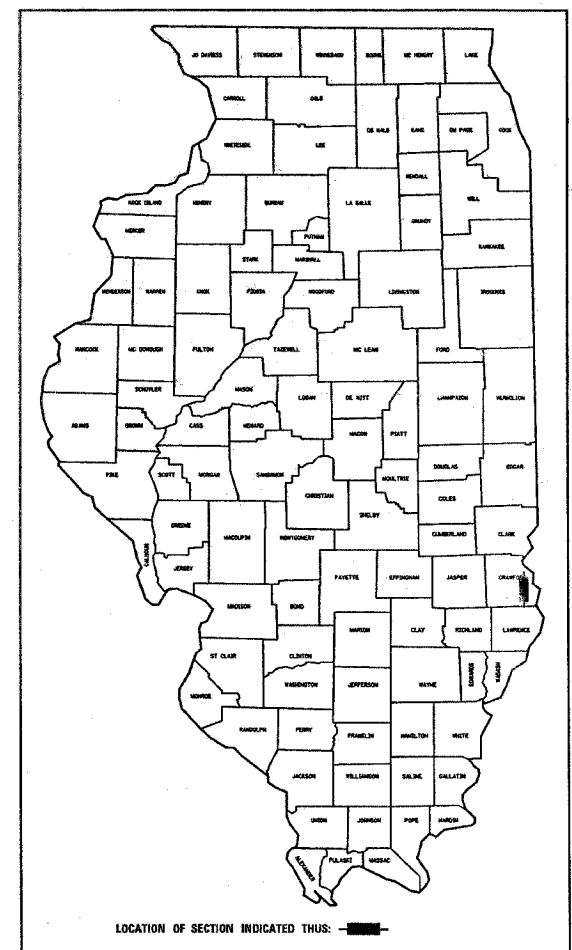


steffenmk  
 3/31/2005  
 c:\projects\94944\d01302.pd.dgn

PROJECT ENGINEER : MARK DAUGHERTY  
 SQUAD LEADER : KRISTI SANDSCHAFER  
 DESIGNER : JOSH PORTER  
 TELEPHONE : 217/342-3951 EX

94944				
332	(18,19,20) RS-2	CRAWFORD	21	1
FED. ROAD DIST. NO. 1		BLANKETS	FED. AID PROJECT NO.	

D-97-013-02



STATE OF ILLINOIS  
 DEPARTMENT OF TRANSPORTATION  
 DIVISION OF HIGHWAYS

# PLANS FOR PROPOSED FEDERAL HIGHWAY PROJECT

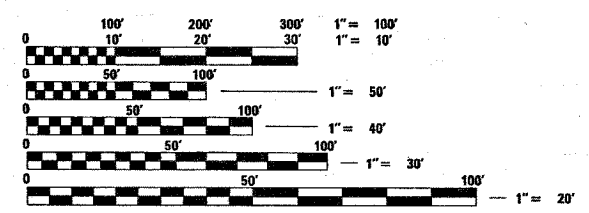
FAP ROUTE 332 (IL 1)  
 PROJECT NO: **NHF-0332(078)**  
 SECTION (18,19,20)RS-2  
 CRAWFORD COUNTY  
 BITUMINOUS RESURFACING

C-97-038-02

~~RR OMISSION~~  
 STA 1008+93.79 TO STA 1009+00

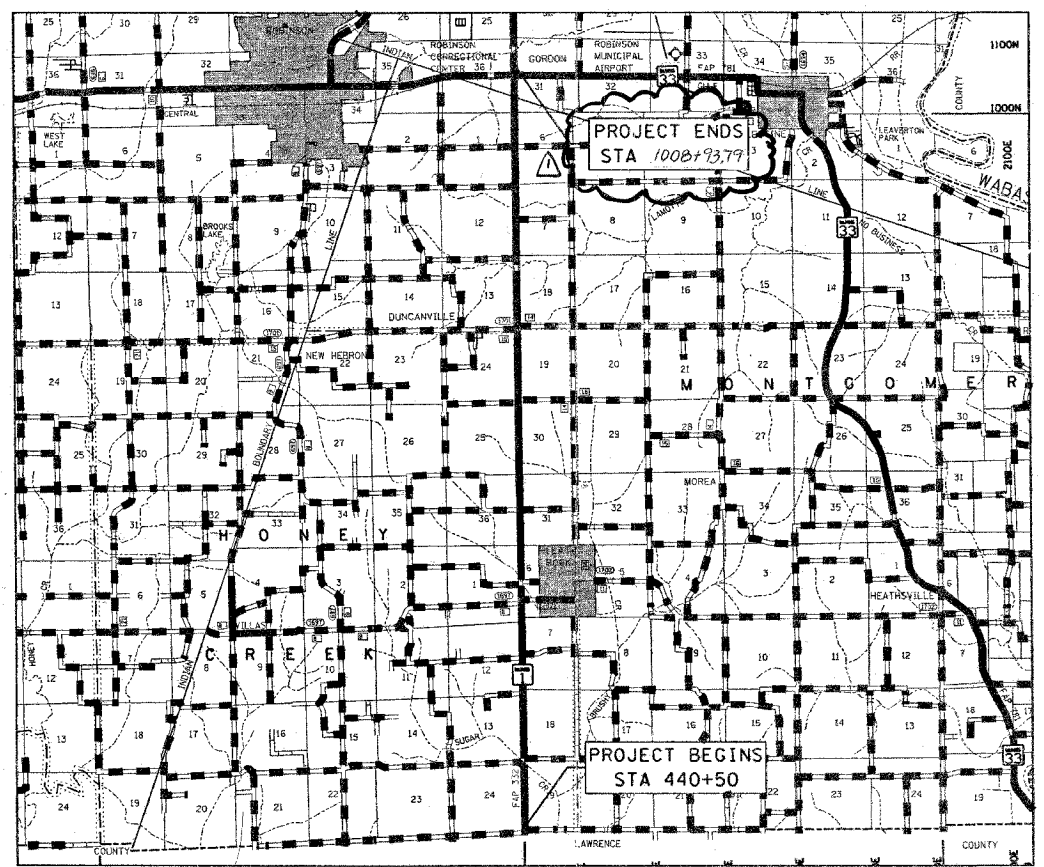
BRIDGE OMISSION  
 STA 490+77 TO STA 491+99

~~STATION EQUATION~~  
 STA 1021+23 BK = STA 0+00 AH



FULL SIZE PLANS HAVE BEEN PREPARED USING STANDARD ENGINEERING SCALES, REDUCED SIZED PLANS WILL NOT CONFORM TO STANDARD SCALES, IN MAKING MEASUREMENTS ON REDUCED PLANS, THE ABOVE SCALES MAY BE USED.

J.U.I.E.  
 JOINT UTILITY LOCATION INFORMATION FOR EXCAVATION  
 1-800-892-0123



STATE OF ILLINOIS  
 DEPARTMENT OF TRANSPORTATION  
 DIVISION OF HIGHWAYS

SUBMITTED APRIL 1 20 05  
Christina M. Deady DISTRICT ENGINEER

20

ENGINEER OF PROJECT DEVELOPMENT AND IMPLEMENTATION  
May 13 20 05  
Mike Hine  
 ENGINEER OF DESIGN AND ENVIRONMENT

May 13 20 05  
Victor Moderski  
 DIRECTOR, DIVISION OF HIGHWAYS

PRINTED BY THE AUTHORITY OF  
 THE STATE OF ILLINOIS

CONTRACT NO. 94944  
 TOWNSHIP : HONEY CREEK, MONTGOMERY

ADT = 4150 (2003)

GROSS LENGTH = 56,843.79 FEET = 10.77 MILES  
 NET LENGTH = 56,721.79 FEET = 10.74 MILES

SEAL  
 Rev. 6-3-05

stefemmk  
6/2/2005  
c:\projects\94944\d01302pa.dgn  
GEN/NDX

SEC.	SECTION	COUNTY	TOTAL SHEETS	SHEET NO.
332	(18,19,20) RS-2	CRAWFORD	21	2

FED. ROAD DIST. NO. 7 ILLINOIS FED. AID PROJECT NO.  
CONTRACT NO. 94944

**GENERAL NOTES**

THIS PROJECT IS LOCATED ON ILLINOIS ROUTE 1 IN CRAWFORD COUNTY, FROM THE CRAWFORD/LAWRENCE COUNTY LINE TO THE INTERSECTION AT GORDON JUNCTION. THE WORK INCLUDED IN SECTION (18-19-20) RS-2 CONSISTS OF PAVEMENT PATCHING, MILLING, BITUMINOUS RESURFACING, AGGREGATE SHOULDERS, PAVEMENT MARKING, AND OTHER WORK NECESSARY TO COMPLETE THE SECTION.

PAVEMENT MARKING SHALL BE APPLIED IN ACCORDANCE WITH SECTION 780 OF THE STANDARD SPECIFICATIONS. SHORT TERM PAVEMENT MARKING SHALL BE APPLIED TO THE MILLED SURFACE, BITUMINOUS MATERIALS (PRIME COAT), LEVEL BINDER, AND BITUMINOUS SURFACE COURSE AS SPECIFIED IN SECTION 703 OF THE STANDARD SPECIFICATIONS. TEMPORARY TAPE SHALL BE USED ON THE SURFACE COURSE AND PAINT SHALL BE USED ON MILLED SURFACES.

THE TOTAL QUANTITY OF PAINT PAVEMENT MARKING-LINE 4 INCH CONSISTS OF 32186 FEET OF YELLOW AND 109776 FEET OF WHITE.

THE TOTAL QUANTITY OF THERMOPLASTIC PAVEMENT MARKING-LINE 6 INCH CONSISTS OF 170 FEET OF WHITE.

THE TOTAL QUANTITY OF THERMOPLASTIC PAVEMENT MARKING-LINE 24 INCH CONSISTS OF 36 FEET OF WHITE.

THE TOTAL QUANTITY OF RAISED REFLECTIVE PAVEMENT MARKERS IS 710 TWO-WAY AMBER AND 7 ONE-WAY CRYSTAL.

THE MATERIAL USED FOR AGGREGATE SHOULDERS, TYPE B SHALL BE CRUSHED STONE OR RAP.

THE MATERIAL USED FOR AGGREGATE SURFACE COURSE, TYPE B SHALL BE CRUSHED STONE.

THE EXISTING PAVEMENT SHALL BE PATCHED IN ACCORDANCE WITH SECTION 442 OF THE STANDARD SPECIFICATIONS AND THE SPECIAL PROVISIONS. THE QUANTITY OF PATCHING SHOWN ON THE PLANS IS AN ESTIMATE ONLY AND THE FINAL LOCATIONS AND QUANTITY SHALL BE DETERMINED BY THE ENGINEER IN THE FIELD.

THE RESIDENT ENGINEER SHALL BE THE SOLE JUDGE CONCERNING THE CURING TIME FOR THE VARIOUS BITUMINOUS LIFTS.

THE FOLLOWING MIXTURE REQUIREMENTS ARE APPLICABLE FOR THIS PROJECT:

MIXTURE USE:	LEVEL BINDER	SURFACE COURSE
PG GRADE:	PG 64-22	PG 64-22
RAP%:	15%	15%
DESIGN AIR VOIDS:	4.0% @ NDESIGN = 70	4.0% @ NDESIGN = 70
MIXTURE COMPOSITION:	IL-9.5	IL-9.5
FRICTION AGGREGATE:	N/A	MIXTURE C

MIXTURE USE:	PAVEMENT PATCHING	INCIDENTAL BITUMINOUS SURFACE
PG GRADE:	PG 64-22	PG 64-22
RAP%:	25%	15%
DESIGN AIR VOIDS:	4.0% @ NDESIGN = 70	4.0% @ NDESIGN = 50
MIXTURE COMPOSITION:	IL-19.0	IL-9.5
FRICTION AGGREGATE:	N/A	MIXTURE C

THE FOLLOWING RATES OF APPLICATION HAVE BEEN USED IN CALCULATING PLAN QUANTITIES:

AGGREGATE SURFACE COURSE	2.05 TONS/CU YD
AGGREGATE SHOULDERS	2.05 TONS/CU YD
BITUMINOUS MATERIALS (PRIME COAT)	0.10 GAL/SQ YD
AGGREGATE (PRIME COAT)	4 LBS/SQ YD
BITUMINOUS CONCRETE	112 LBS/SQ YD/INCH

SHORT TERM PAVEMENT MARKINGS ON MILLED SURFACE SHALL BE PAINT.  
THE USE OF VIBRATORY ROLLERS WILL NOT BE ALLOWED IN URBAN AREA (DUE TO VIBRATION PROBLEMS) BUT THE DENSITY REQUIREMENT WILL REMAIN THE SAME.

THE CONTRACTOR WILL PROVIDE INTERNET ACCESSIBILITY TO THE BITUMINOUS PLANT QUALITY CONTROL LAB SO THAT BITUMINOUS PLANT REPORTS CAN BE E-MAILED TO THE DISTRICT HEADQUARTERS. THIS WORK SHALL BE INCLUDED IN THE COST OF ALL BITUMINOUS ITEMS.

FOR THE PAY ITEM BITUMINOUS MATERIALS (PRIME COAT), THE CONTRACTOR SHALL USE EITHER RC-70 OR AN EMULSIFIED POLYMER PRIME SS-1HP.

ALL EARTHWORK AND SEEDING SHALL BE INCLUDED IN THE COST OF PIPE CULVERTS, CLASS D TYPE 2 18", (STATION 822+50 RT). THE EARTHWORK SHALL BE SLOPED FROM EXISTING GRADE TO THE NEW END SECTION OF THE PIPE CULVERT EXTENTION.

**INDEX OF SHEETS**

SHEET NO.	ITEM
1	COVER SHEET
2	INDEX OF SHEETS, LIST OF APPLICABLE HIGHWAY STANDARS, GENERAL NOTES
3	SUMMARY OF QUANTITIES
*4-6	TYPICAL SECTIONS AND DETAILS
7	PAVING SCHEDULE AND PAVEMENT MARKING SCHEDULE
8	ENTRANCE SCHEDULE AND MAILBOX TURNOUT DETAIL
9-18	PLAN SHEETS
19	PAVEMENT MARKINGS AT RAILROAD HIGHWAY GRADE CROSSING
20-21	TYPICAL APPLICATION OF PAVEMENT MARKINGS

~~5 DELETED~~

THE FOLLOWING STANDARDS ARE A PART OF THESE PLANS AND ARE INCLUDED AFTER SHEET NO. 21:

STD. NO.	DESCRIPTION
000001-04	STANDARD SYMBOLS, ABBREVIATIONS AND PATTERNS
442201-01	CLASS C AND D PATCHES
701006-02	OFF-RD OPERATIONS, 2L, 2W, 15 FT. TO 24 IN. FROM PAVEMENT EDGE
701011-01	OFF-RD MOVING OPERATIONS, 2L, 2W, DAY ONLY
701101	OFF-RD OPERATIONS, MULTILANE LESS THAN 15' AWAY FOR SPEEDS >= 45 MPH
701301-02	LANE CLOSURE, 2L, 2W, SHORT TIME OPERATIONS
701306-01	LANE CLOSURE, 2L, 2W, SLOW MOVING OPERATIONS DAY ONLY, FOR SPEEDS >=45 MPH
701311-02	LANE CLOSURE, 2L, 2W, MOVING OPERATIONS - DAY ONLY
701336-04	LANE CLOSURE, 2L, 2W, WORK AREAS IN SERIES, FOR SPEEDS >=45 MPH
702001-05	TRAFFIC CONTROL DEVICES
780001-01	TYPICAL PAVEMENT MARKINGS
781001-02	TYPICAL APPLICATIONS RAISED REFLECTIVE PAVEMENT MARKERS

REVISIONS	
NAME	DATE

ILLINOIS DEPARTMENT OF TRANSPORTATION  
**GENERAL NOTES  
&  
INDEX OF SHEETS**  
SCALE: VERT. \_\_\_\_\_  
DATE \_\_\_\_\_ HORIZ. \_\_\_\_\_  
DRAWN BY \_\_\_\_\_  
CHECKED BY \_\_\_\_\_

Rev. Sheet 6-3-05

steffenmk  
3/31/2005  
c:\projects\949444\d01302pa.dgn

SOQ

# SUMMARY OF QUANTITIES

ATE	SECTION	COUNTY	TOTAL SHEETS	SHEET NO.
332	(18,19,20) RS-2	CRAWFORD	21	3
FED. ROAD DIST. NO. 1		ILLINOIS	FED. AID PROJECT NO.	

CONTRACT NO. 94944

SUMMARY OF QUANTITIES			CONSTRUCTION TYPE CODE		
CODE NO	ITEM	UNIT	80% FED. 20% STATE TOTAL	TOTAL	
40200800	AGGREGATE SURFACE COURSE, TYPE B	TON	158	158	
40600100	BITUMINOUS MATERIALS (PRIME COAT)	GALLON	10083	10083	⚠
40600300	AGGREGATE (PRIME COAT)	TON	378	378	
40600895	CONSTRUCTING TEST STRIP	EACH	1	1	
40600980	BITUMINOUS SURFACE REMOVAL - BUTT JOINT	SQ YD	300	300	
40600990	TEMPORARY RAMP	SQ YD	70	70	⚠
44000030	BITUMINOUS SURFACE REMOVAL (VARIABLE DEPTH)	SQ YD	183845	183845	
44200180	PAVEMENT PATCHING, TYPE II, 15 INCH	SQ YD	1366	1366	
44200184	PAVEMENT PATCHING, TYPE III, 15 INCH	SQ YD	134	134	
44200186	PAVEMENT PATCHING, TYPE IV, 15 INCH	SQ YD	259	259	
48101200	AGGREGATE SHOULDERS, TYPE B	TON	6067	6067	
54215553	METAL END SECTIONS 18"	EACH	1	1	
542D1063	PIPE CULVERTS, CLASS D, TYPE 2 18"	FOOT	10	10	
63200310	GUARDRAIL REMOVAL	FOOT	30	30	
67000500	ENGINEER'S FIELD OFFICE, TYPE B	CAL MO	4	4	
67100100	MOBILIZATION	L SUM	1	1	
70100460	TRAFFIC CONTROL AND PROTECTION, STANDARD 701306	L SUM	1	1	
70100600	TRAFFIC CONTROL AND PROTECTION, STANDARD 701336	L SUM	1	1	
70300100	SHORT-TERM PAVEMENT MARKING	FOOT	22,949	22,949	⚠
70300210	TEMPORARY PAVEMENT MARKING - LETTERS AND SYMBOLS	SQ FT	108	108	⚠
70300220	TEMPORARY PAVEMENT MARKING - LINE 4"	FOOT	141,962	141,962	⚠
70300240	TEMPORARY PAVEMENT MARKING - LINE 6"	FOOT	170	170	
70300280	TEMPORARY PAVEMENT MARKING - LINE 24"	FOOT	36	36	⚠
70301000	WORK ZONE PAVEMENT MARKING REMOVAL	SQ FT	1913	1913	⚠
* 78000100	THERMOPLASTIC PAVEMENT MARKING - LETTERS AND SYMBOLS	SQ FT	108	108	
* 78000400	THERMOPLASTIC PAVEMENT MARKING - LINE 6"	FOOT	170	170	
* 78000650	THERMOPLASTIC PAVEMENT MARKING - LINE 24"	FOOT	36	36	⚠
* 78001110	PAINT PAVEMENT MARKING - LINE 4"	FOOT	141,962	141,962	⚠
* 78100100	RAISED REFLECTIVE PAVEMENT MARKER	EACH	717	717	
X4066416	BITUMINOUS CONCRETE SURFACE COURSE, SUPERPAVE, MIX "C", N70	TON	15,862	15,862	
<del>X4066528</del>	<del>POLYMERIZED BITUMINOUS CONCRETE SURFACE COURSE, SUPERPAVE, MIX "B", N90</del>	<del>TON</del>	<del>558</del>	<del>558</del>	<del>⚠</del>

SUMMARY OF QUANTITIES			CONSTRUCTION TYPE CODE		
CODE NO	ITEM	UNIT	80% FED. 20% STATE TOTAL	TOTAL	
X4066770	LEVELING BINDER (MACHINE METHOD), SUPERPAVE N70	TON	7931	7931	⚠
<del>X4066915</del>	<del>POLYMERIZED LEVELING BINDER (MACHINE METHOD), SUPERPAVE N90</del>	<del>TON</del>	<del>279</del>	<del>279</del>	
X4080020	INCIDENTAL BITUMINOUS SURFACING, SUPERPAVE, N50	TON	108	108	
X4409410	BITUMINOUS SURFACE REMOVAL 2 1/4"	SQ YD	4678	4678	⚠
Z0025500	FURNISHING AND INSTALLING PROPERTY MARKERS	EACH	1	1	
Z0048665	RAILROAD PROTECTIVE LIABILITY INSURANCE	L SUM	1	1	

\*SPECIALTY ITEMS

REVISIONS	
NAME	DATE

ILLINOIS DEPARTMENT OF TRANSPORTATION

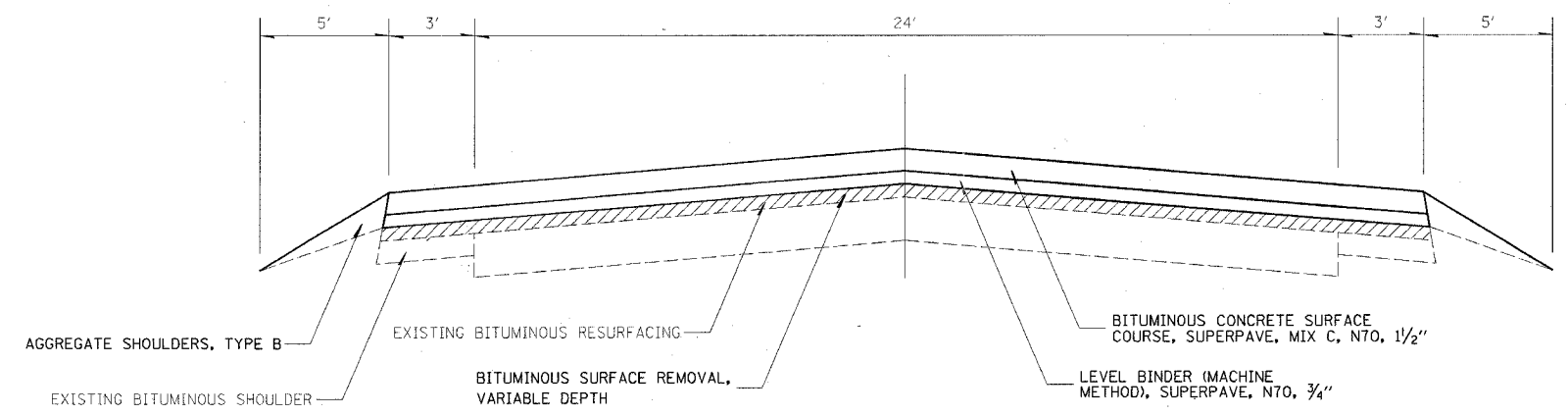
## SUMMARY OF QUANTITIES

SCALE: VERT.      DRAWN BY  
HORIZ.              CHECKED BY  
DATE

staffermk  
6/2/2005  
c:\projects\94944d\01302pa.dgn  
TYP

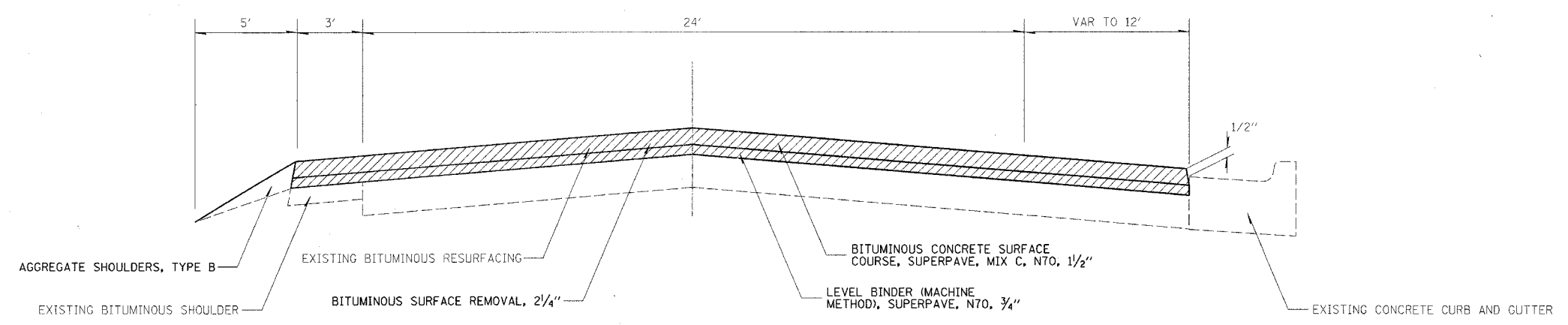
332	(18,19,20) RS-2	CRAWFORD	21	4
FED. ROAD DIST. NO. 7		ILLINOIS	FED. AID PROJECT NO.	

CONTRACT NO. 94944



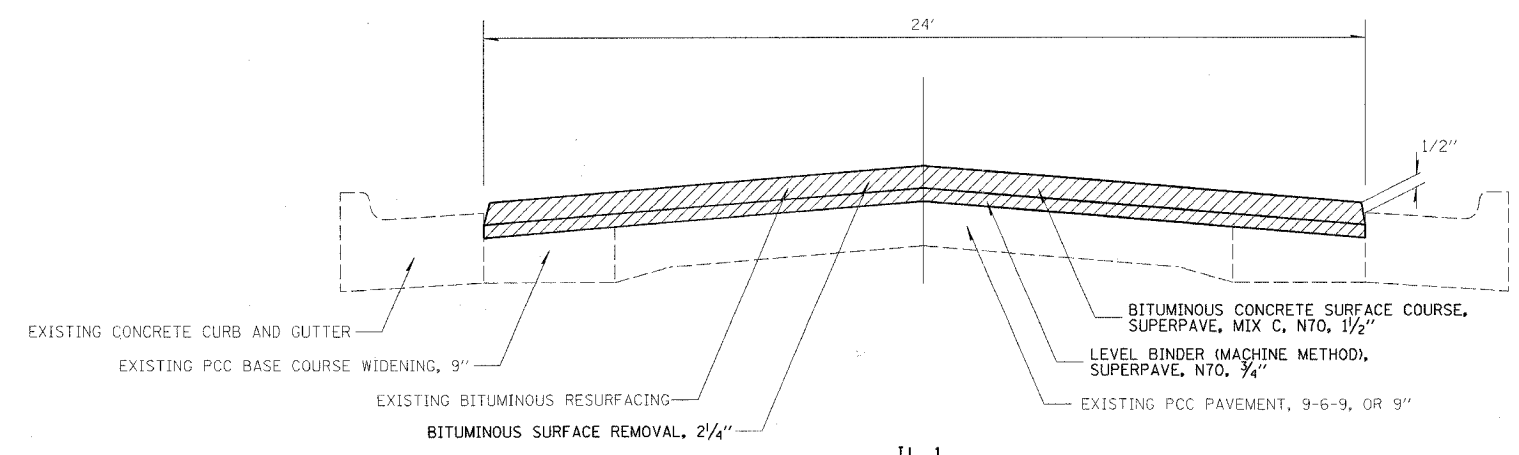
**IL 1**

STA 440+50 TO STA 490+77  
STA 491+99 TO STA 612+59  
STA 617+09 TO STA 1000+46



**IL 1**

STA 612+59 TO STA 617+09



**IL 1**

STA 1000+46 TO STA 1008+93

REVISIONS	
NAME	DATE

ILLINOIS DEPARTMENT OF TRANSPORTATION

**TYPICAL SECTIONS**

SCALE: VERT. 1"=4'  
HORIZ. 1"=20'

DATE: \_\_\_\_\_ DRAWN BY: \_\_\_\_\_  
CHECKED BY: \_\_\_\_\_

Rev. Sheet 6-3-05

steffenmk  
6/2/2005  
c:\projects\94944\d01302pa.dgn  
SCH

HTL	SECTION	COUNTY	TOTAL SHEETS	SHEET NO.
332	(18,19,20) RS-2	CRAWFORD	21	7
FED. ROAD DIST. NO. 1		ILLINOIS	FED. AID PROJECT NO.	
CONTRACT NO. 94944				

RESURFACING SCHEDULE

STATION TO STATION	LENGTH	EXISTING PAVEMENT WIDTH	AREA	BITUMINOUS MATERIALS (PRIME COAT)	AGGREGATE (PRIME COAT)	LEVELLING BINDER (MACHINE METHOD), SUPERPAVE N70	BITUMINOUS CONCRETE SURFACE COURSE, SUPERPAVE MIX C, N 70	BITUMINOUS SURFACE REMOVAL - BUTT JOINT	BITUMINOUS SURFACE REMOVAL 2 1/4"	BITUMINOUS SURFACE REMOVAL (VARIABLE DEPTH)	AGGREGATE SHOULDERS, TYPE B	TEMPORARY RAMP
	LIN FT	FEET	SQ YD	GALLON	TON	TON	TON	SQ YD	SQ YD	SQ YD	TON	SQ YD
ILL 1 440+50 TO 490+77	5027.0	30	16757	1675.7	33.5	703.8	1407.6	200		16556.7	547.6	33.4
490+77 TO 491+99		30						100				
491+99 TO 612+29.25	12030.3	30	40101	4010.1	80.2	1684.2	3368.5			40000.8	1317.9	16.7
612+29.25 TO 612+59.25	30.0	30	100	10.0	0.2	4.2	8.4		100.0		3.3	
612+59.25 TO 614+75	215.8	31.5	755	75.5	1.5	31.7	63.4		755.1		5.3	
614+75 TO 617+30	255.0	39	1105	110.5	2.2	46.4	92.8		1105.0		14.1	
617+30 TO 618+00	70.0	33	257	25.7	0.5	10.8	21.6		256.7		3.9	
618+00 TO 618+30	30.0	30	100	10.0	0.2	4.2	8.4		100.0		3.3	
618+30 TO 1000+16	38186.0	30	127287	12728.7	254.6	5346.0	10692.1			127286.7	4158.8	
1000+16 TO 1000+46	30.0	30	100	10.0	0.2	4.2	8.4		100.0		3.3	
1000+46 TO 1008+93.79	847.8	24	2261	226.1	4.5	95.0	189.9		2260.8		9.4	20.0
TOTALS				18883	378	7931	15862	300	4678	183845	6067	70

PAVEMENT MARKING SCHEDULE

STATION TO STATION	THERMOPLASTIC PAVEMENT MARKING - LETTERS AND SYMBOLS	THERMOPLASTIC PAVEMENT MARKING - LINE 6"	THERMOPLASTIC PAVEMENT MARKING - LINE 24"	TEMPORARY PAVEMENT MARKING - LETTERS AND SYMBOLS	TEMPORARY PAVEMENT MARKING - LINE 4"	TEMPORARY PAVEMENT MARKING - LINE 6"	TEMPORARY PAVEMENT MARKING - LINE 24"	SHORT-TERM PAVEMENT MARKING	RAISED REFLECTIVE PAVEMENT MARKERS
	SO FT	FOOT	FOOT	SO FT	FOOT	FOOT	FOOT	FOOT	EACH
IL 1 440+50 TO 593+75					37740			6081.2	190
593+75 TO 618+12	46.8	170		46.8	9008	170		1042.8	36
618+12 TO 653+63					8863			1420.4	45
653+63 TO 660+60					2743			278.8	9
660+60 TO 1000+46					82751			13594.4	425
1000+46 TO 1002+15					212			67.6	3
1002+15 TO 1008+93	61.2		36	61.2	645		36	463.2	9
TOTALS	108	170	36	108	141962	170	36	22949	717

REVISIONS	
NAME	DATE

ILLINOIS DEPARTMENT OF TRANSPORTATION

**SCHEDULES**

SCALE: VERT. \_\_\_\_\_  
HORIZ. \_\_\_\_\_

DATE \_\_\_\_\_

DRAWN BY \_\_\_\_\_  
CHECKED BY \_\_\_\_\_

Rev. Sheet 6-2-05

