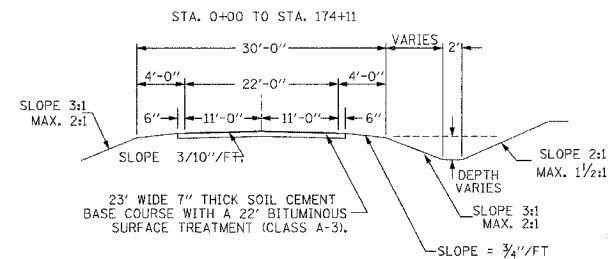
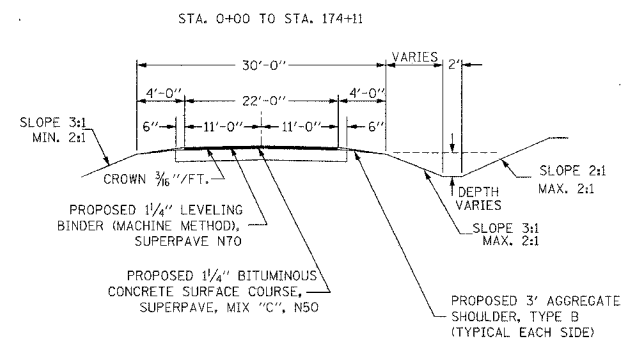


**TYPICAL CROSS SECTION
EXISTING**



**TYPICAL CROSS SECTION
PROPOSED**



GENERAL NOTES:

THIS SECTION CONSISTS OF LEV BIND MM SUPER N70, BC SC SUPER C N50, AGGREGATE SHOULDERS, AND OTHER MISCELLANEOUS ITEMS NECESSARY TO COMPLETE THE PROJECT, ALL IN ACCORDANCE WITH THE PLANS, SPECIAL PROVISIONS AND "STANDARD SPECIFICATIONS FOR ROAD AND BRIDGE CONSTRUCTION" ADOPTED JANUARY 1, 2002.

THE EXISTING GRADE, ALIGNMENT, DRAINAGE STRUCTURES, BASE AND SURFACE WERE CONSTRUCTED UNDER SECTION 77-00049-00-SC AND SHALL REMAIN IN PLACE. ALL STATIONS REFERRED TO IN THE PLANS AND PROPOSAL ARE REFERENCED TO THE ABOVE MENTIONED SECTION.

MAXIMUM PERCENT OF GRADE	+4.36 %
MINIMUM STOPPING SIGHT DISTANCE	400 FT
DESIGN SPEED	50 MPH
CURRENT ADT	275 VPD
DESIGN ADT (20 YEAR)	325 VPD

THE BC SC SUPER C N50 SHALL BE PLACED IN ONE LIFT WITH A MINIMAL THICKNESS OF 1 1/4".

THE QUANTITY SHOWN IN THE SUMMARY OF QUANTITIES FOR BC SC SUPER C N50 ALLOWS 131.8 TON FOR THE TAPERS ON THE MAINLINE AND THE SIDEROADS, 94.4 TON FOR THE ENTRANCES, 32.3 TON FOR THE MAILBOX TURNOUTS, AND 2962.1 TON FOR THE 1" BC SC SUPER C N50.

CONSTRUCT BITUMINOUS TAPER OF 1/4" TO 0" FROM STATION 173+61 TO BEGINNING STATION 174+11.

UNPAVED AREAS WILL BE PREPARED ACCORDING TO ARTICLE 406.19 OF THE "STANDARD SPECIFICATIONS FOR ROAD AND BRIDGE CONSTRUCTION" ADOPTED JANUARY 1, 2002.

THE FOLLOWING RATES HAVE BEEN USED TO CALCULATE PLAN QUANTITIES:

AGGREGATE SHOULDERS TY. B	1.8 T / CU YD
BITUMINOUS CONCRETE	0.0560 T / SQ YD / INCH
AGGREGATE PRIME COAT	0.001 T / SQ YD
BITUMINOUS MATERIAL (PRIME COAT)	0.05 GAL / SQ YD

SUMMARY OF QUANTITIES

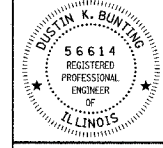
QUANTITY	UNIT	ITEM	1000 CODE NUMBER
2176.00	GALLON	BITUMINOUS MATERIALS (PRIME COAT)	40600100
44.00	TON	AGGREGATE (PRIME COAT)	40600300
4789.00	TON	LEVELING BINDER (MACHINE METHOD), SUPERPAVE N70	X4066770
3221.00	TON	BITUMINOUS CONCRETE SURFACE COURSE, SUPERPAVE, MIX "C", N50	X4066414
178.00	SQ YD	BITUMINOUS SURFACE REMOVAL - BUTT JOINT	40600980
44.00	SQ YD	TEMPORARY RAMP	40600990
1750.00	TON	AGGREGATE SHOULDERS, TYPE B	48101200
1.00	L SUM	TRAFFIC CONTROL AND PROTECTION STANDARD 701306	70100460
5223.00	FOOT	SHORT-TERM PAVEMENT MARKING	70300100
58982.00	FOOT	PAINT PAVEMENT MARKING-LINE 4"	78001100
1741.00	FOOT	SHORT-TERM PAVEMENT MARKING REMOVAL	XX003140

323 W. 3RD ST.
P.O. BOX 160
MT. CARMEL, IL
62863
PHONE:
(618)-262-8651
FAX:
(618)-263-3327

405 W. STATE ST.
SUITE 1
PRINCETON, IN
47570
PHONE:
(812)-386-7611
FAX:
(812)-385-2812

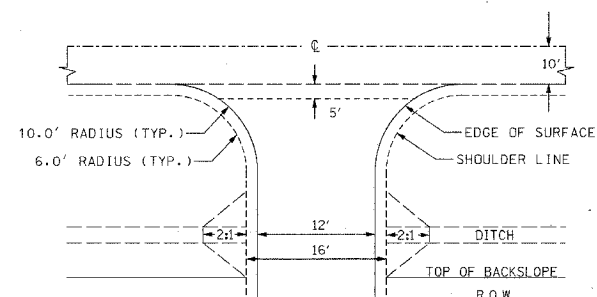


PROFESSIONAL DESIGN FIRM
LAND SURVEY & PROFESSIONAL ENGINEERING CORPORATION
184-000887
(62-032435)(35-002769)



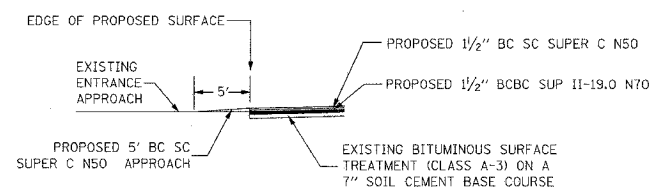
DUSTIN K. BUNTING
NAME
SIGNATURE
DATE 03-07-05
11-30-05
EXPIRES

DETAIL OF PRIVATE AND FIELD ENTRANCES



NOTE: THE 5' AREA FROM THE EDGE OF SURFACE, AS SHOWN ABOVE, SHALL BE BC SC SUPER C N50 FOR THE PRIVATE ENTRANCES AND THE FIELD ENTRANCES. THIS QUANTITY IS INCLUDED IN THE QUANTITY FOR BC SC SUPER C N50.

PRIVATE & FIELD ENTRANCE APPROACH DETAIL



SCHEDULE OF PRIVATE AND FIELD ENTRANCES

STATION	LOCATION	BC SC SUPER "C" N50 TONS
13+03	LT	2.1
13+55	RT	1.9
23+00	RT	3.6
26+50	LT	2.2
26+90	RT	1.8
28+46	LT	2.3
28+75	RT	1.4
33+43	RT	3.0
35+14	RT	1.6
35+88	LT	1.6
40+08	RT	1.3
45+67	RT	2.1
64+12	RT	2.3
64+82	LT	1.6
66+87	RT	1.7
68+88	LT	1.4
71+96	LT	2.2
80+01	RT	2.1
80+16	LT	1.9
99+11	LT	1.9
106+00	LT	1.8
106+02	RT	2.3
117+25	RT	1.9
119+82	RT	2.7
120+74	LT	2.1
122+15	RT	1.9
123+65	RT	2.1
126+69	RT	2.1
126+80	LT	2.4
133+46	LT	2.1
133+63	RT	3.1
136+33	LT	2.1
141+02	LT	2.7
146+99	RT	1.6
147+59	LT	1.9
157+84	LT	9.9
158+20	RT	2.3
160+02	LT	1.6
165+17	LT	3.5
168+39	RT	1.9
173+69	LT	2.2
	TOTAL	94.4

THE ABOVE QUANTITY IS INCLUDED IN THE BC SC SUPER C N50 IN THE SUMMARY OF QUANTITIES.

SCHEDULE OF MAILBOX TURNOUTS

STATION	LOCATION	EST. QUANTITY ALLOWED TONS
22+72	RT.	2.3
28+19	LT	4.0
33+19	RT.	2.4
46+11	RT.	3.4
53+27	RT.	2.8
69+20	LT.	3.5
118+83	LT.	3.6
123+65	LT.	2.7
140+36	LT.	3.0
160+35	LT.	2.7
160+37	LT.	
164+90	LT.	1.9
	TOTAL	32.3

THE ABOVE QUANTITY IS INCLUDED IN THE BC SC SUPER C N50 IN THE SUMMARY OF QUANTITIES.

UTILITIES

J.U.L.I.E.
800-892-0123