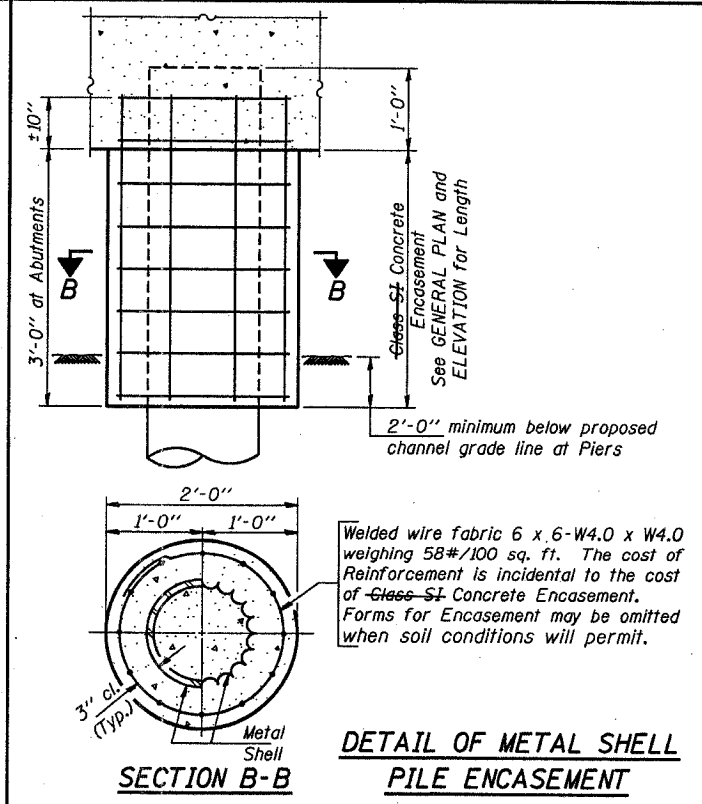
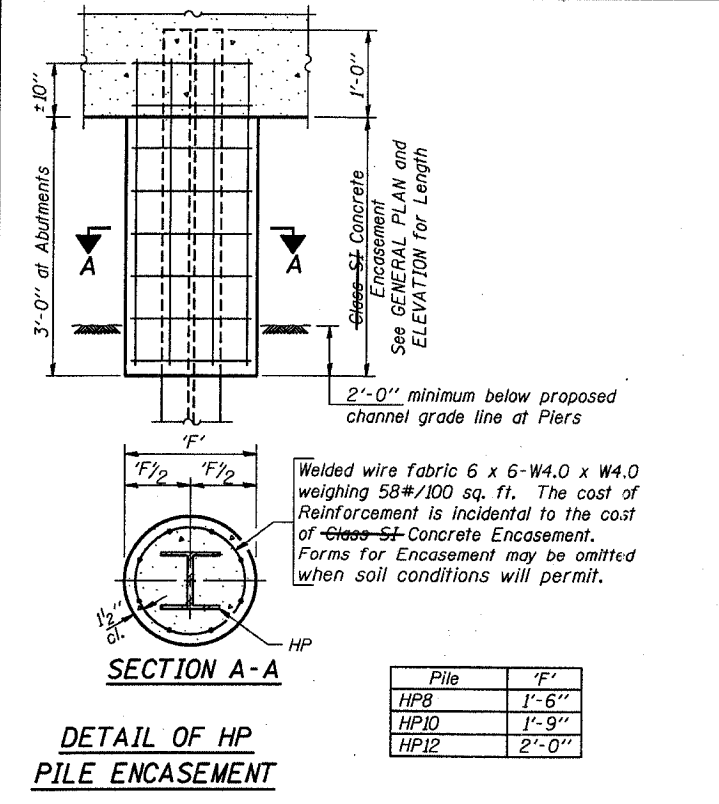
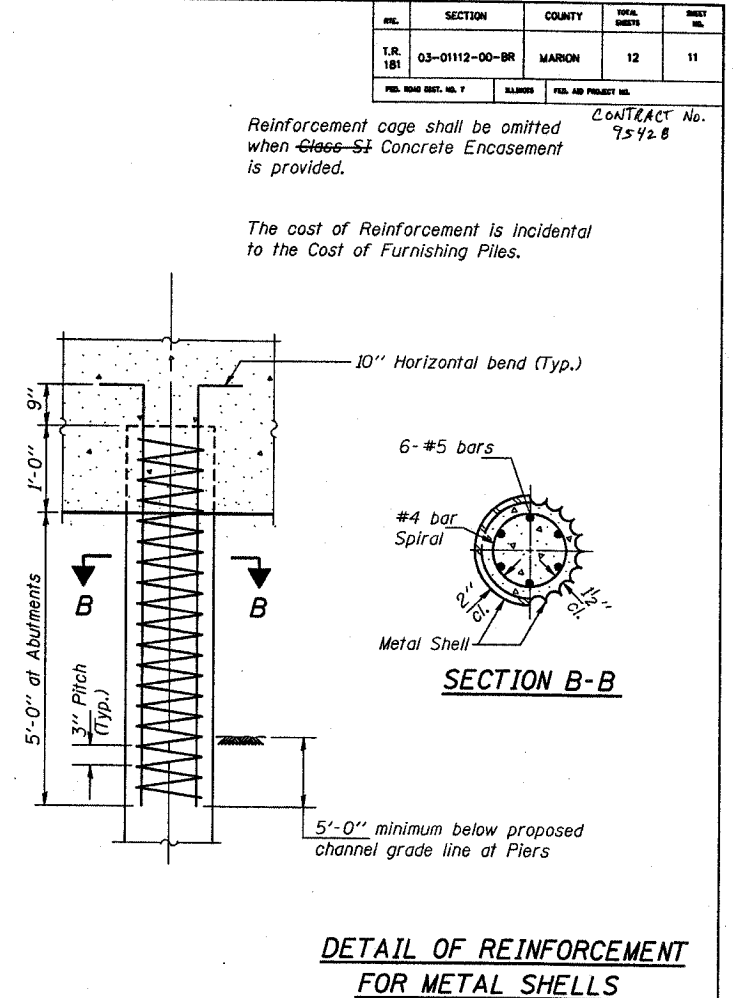
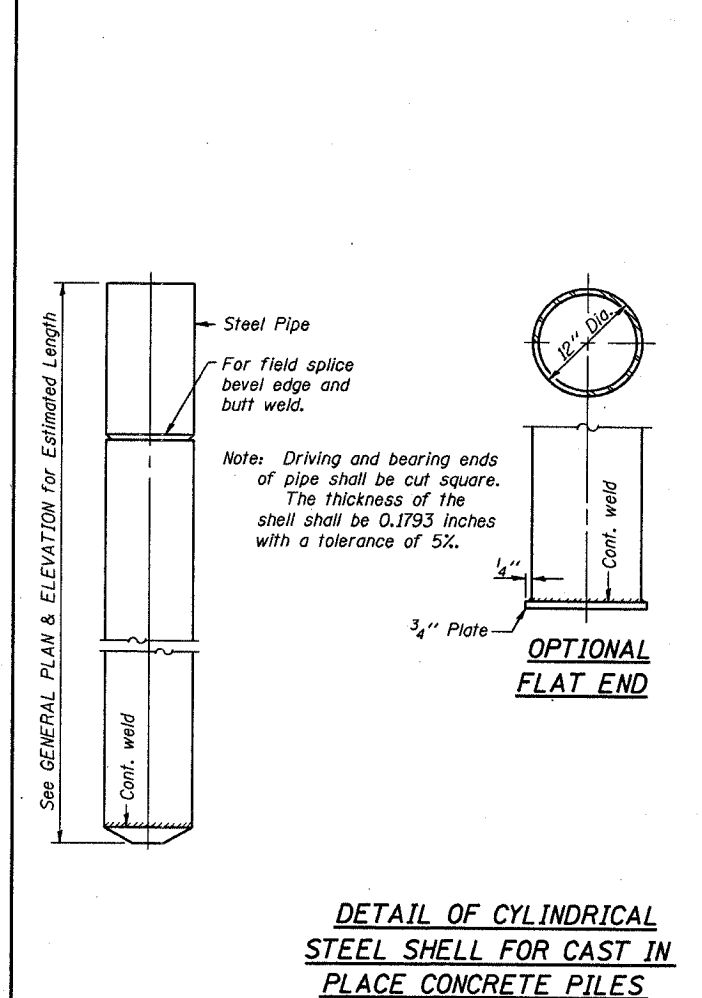
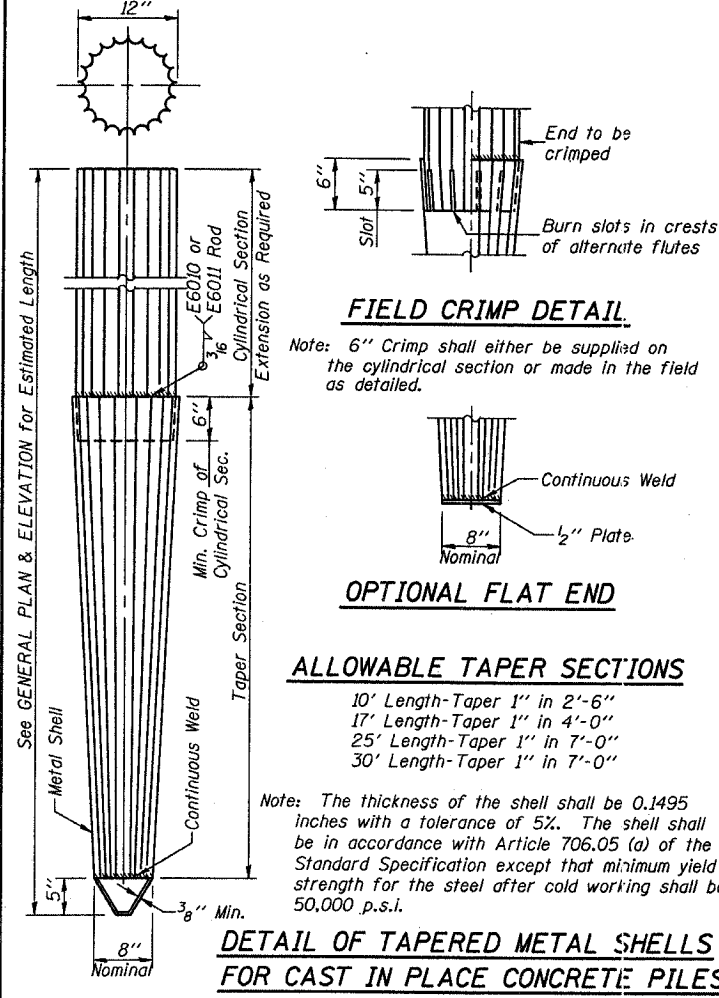
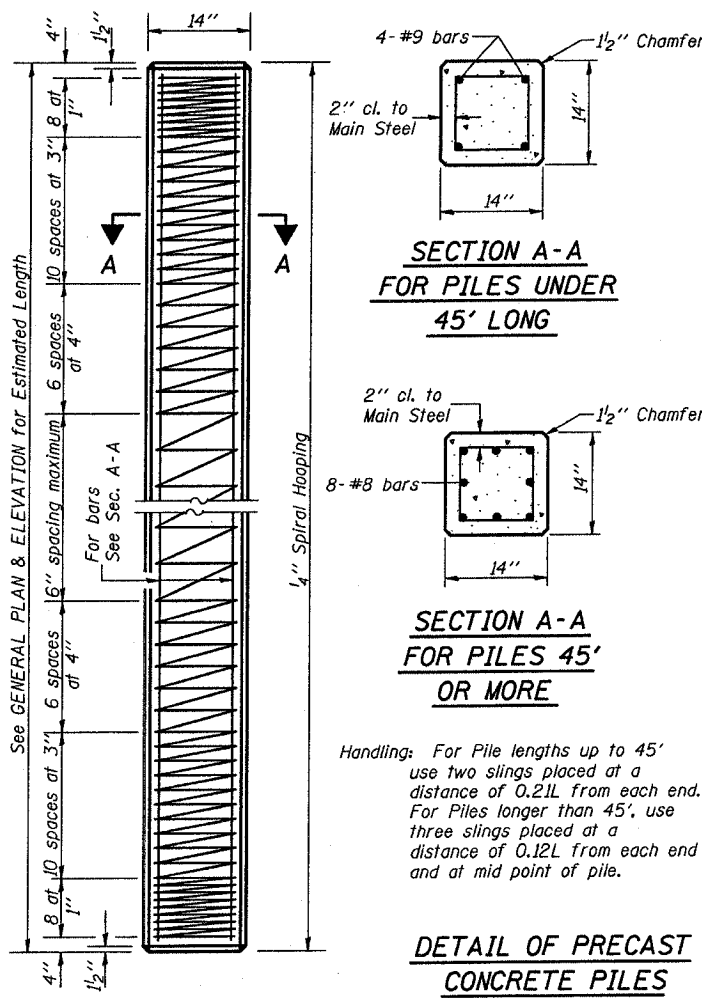


ENC.	SECTION	COUNTY	TOTAL SHEETS	SHEET NO.
T.R. 181	03-01112-00-BR	MARION	12	11
FILE NAME ENC. NO. 1	DESIGN	FILE AND PROJECT NO.		

Reinforcement cage shall be omitted when ~~Class II~~ Concrete Encasement is provided. CONTRACT No. 75428

The cost of Reinforcement is incidental to the Cost of Furnishing Piles.



**QUANTITIES/LIN. FT. OF ENCASEMENT (STEEL PILES)**

Pile Size	Item	Quantity
HP8	<del>Class II</del> Concrete Encasement	0.063 C.Y.
HP10	<del>Class II</del> Concrete Encasement	0.086 C.Y.
HP12	<del>Class II</del> Concrete Encasement	0.112 C.Y.

**(METAL SHELL PILES)**

Pile Size	Item	Quantity
12" Dia.	<del>Class II</del> Concrete Encasement	0.087 C.Y.

Illinois Department of Transportation  
PASSED November 1, 1995  
APPROVED November 1, 1995  
Engineer of Bridges and Structures

**PILE DETAILS**  
**STANDARD CX-1**