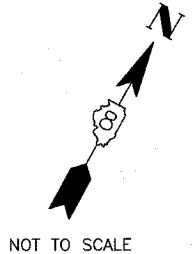
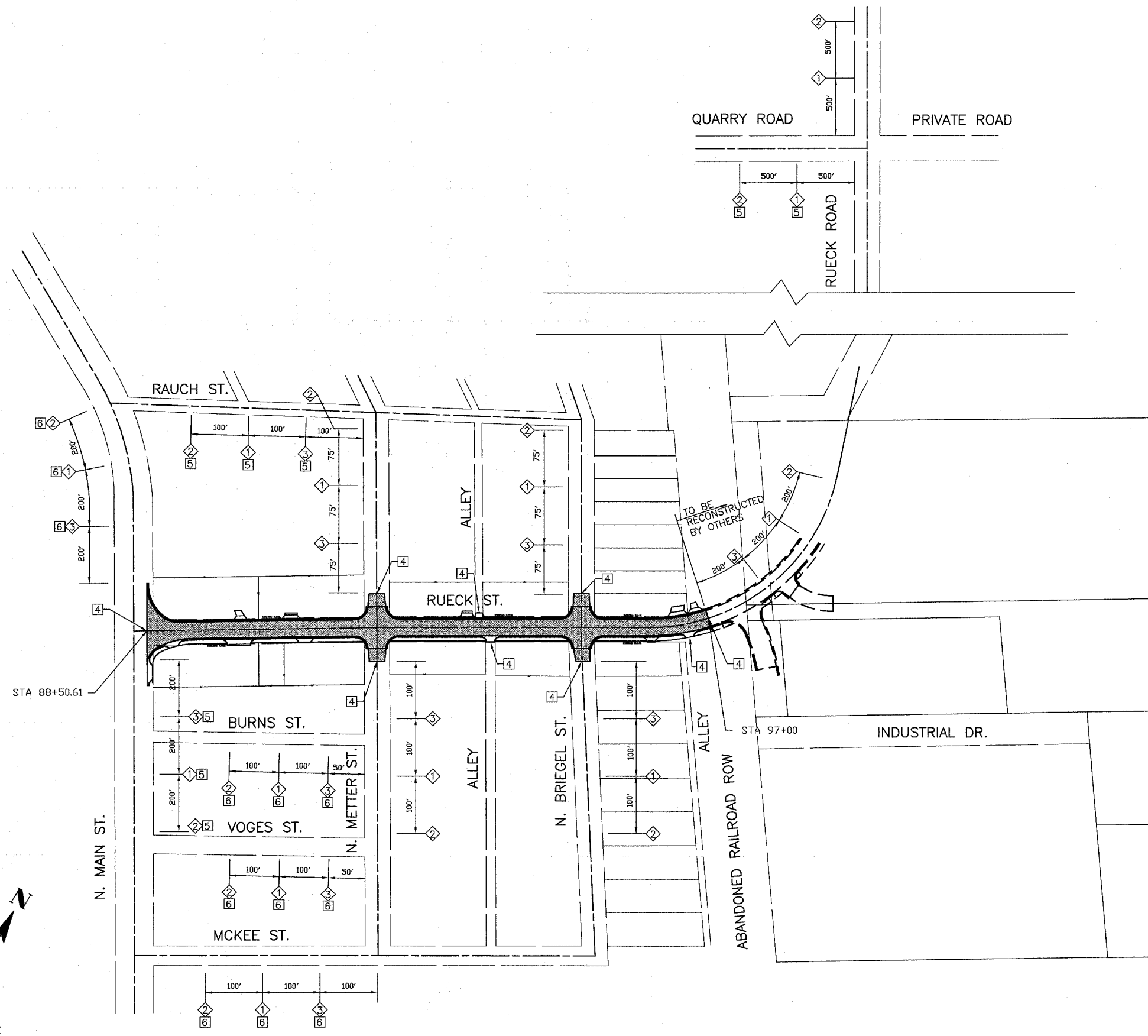


BY	DATE
FINAL SURVEY PLOTTED	
NOTE BOOK DATE	
AREAS CHECKED	
NO.	

BY	DATE
ORIGINAL SURVEY PLOTTED	
NOTE BOOK DATE	
AREAS CHECKED	
NO.	



### LEGEND

- 1 ROAD CLOSED AHEAD-W20-3(0)
- 2 ROAD CONSTRUCTION AHEAD-W20-1(0)
- 3 BARRICADE AHEAD
- 4 TYPE III BARRICADES STAGGERED W/ R-11-4-6030 (ROAD CLOSED TO THRU TRAFFIC) SIGNS AND TYPE A LOW INTENSITY FLASHING LIGHTS
- 5 24" x 24"
- 6 24" x 24"
- TYPE A LOW INTENSITY FLASHING LIGHT
- WORK ZONE (TYP)

48" X 48"  
FLUORESCENT  
ORANGE

- ### NOTES
1. TYPE III BARRICADES AND ROAD CLOSURE SIGNS SHALL BE POSITIONED AS SHOWN, IN ACCORDANCE WITH HIGHWAY STANDARD 702001 AND AS DIRECTED BY THE ENGINEER.
  2. TYPE A LOW INTENSITY FLASHING WARNING LIGHTS SHALL BE USED ON EACH SIGN IN ADVANCE OF THE WORK DURING HOURS OF DARKNESS.
  3. ALL WARNING SIGNS SHALL BE A MINIMUM OF 48" x 48" AND HAVE A BLACK LEGEND AND BORDER ON A FLUORESCENT ORANGE REFLECTORIZED BACKGROUND.
  4. THE CONTRACTOR SHALL MAINTAIN ACCESS TO ENTRANCES AT ALL TIMES.
  5. LONGITUDINAL DISTANCES MAY BE ADJUSTED TO FIT FIELD CONDITIONS.
  6. ALL TYPE III BARRICADES UTILIZED FOR ROAD CLOSURES SHALL HAVE A LOW INTENSITY FLASHING LIGHT MOUNTED ON TOP OF EACH BARRICADE.
  7. EXACT LOCATION OF ALL WARNING SIGNS AND BARRICADES SHALL BE STAKED IN THE FIELD FOR APPROVAL BY THE ENGINEER PRIOR TO INSTALLATION.
  8. ALL RESIDENTS FRONTING THE PROJECT SHALL BE NOTIFIED AT LEAST 48 HOURS PRIOR TO ROAD CLOSURES AFFECTING THEIR ACCESS.
  9. SEE HIGHWAY STANDARD 701501 FOR DAYTIME SINGLE LANE CLOSURES.