

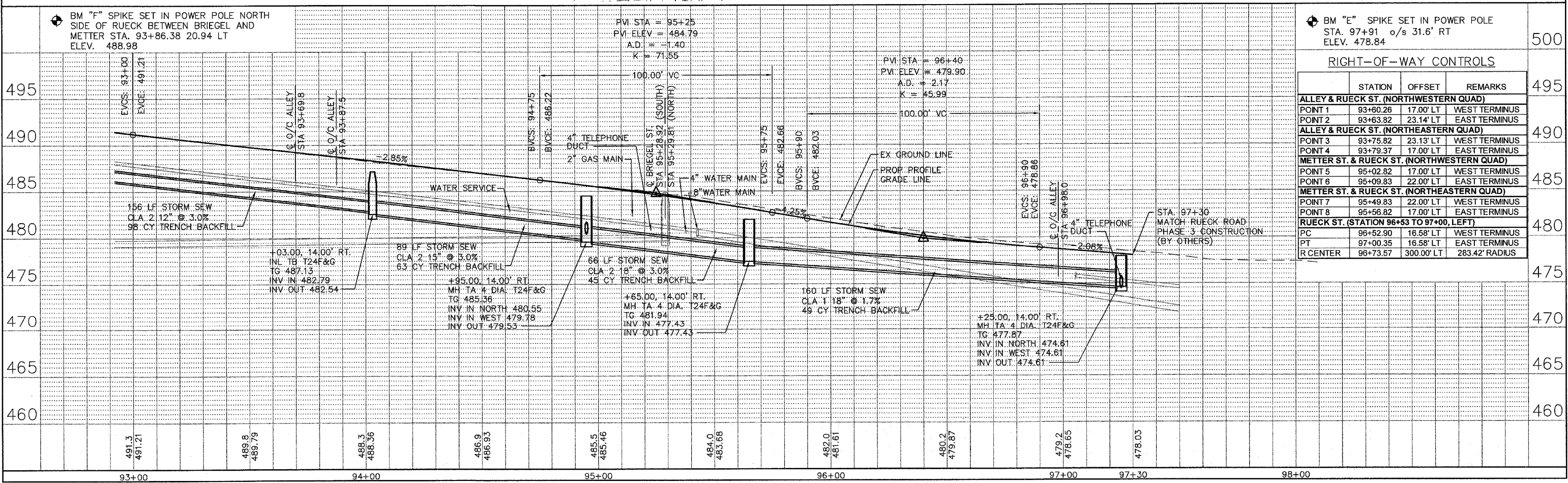
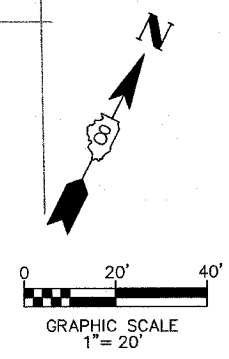
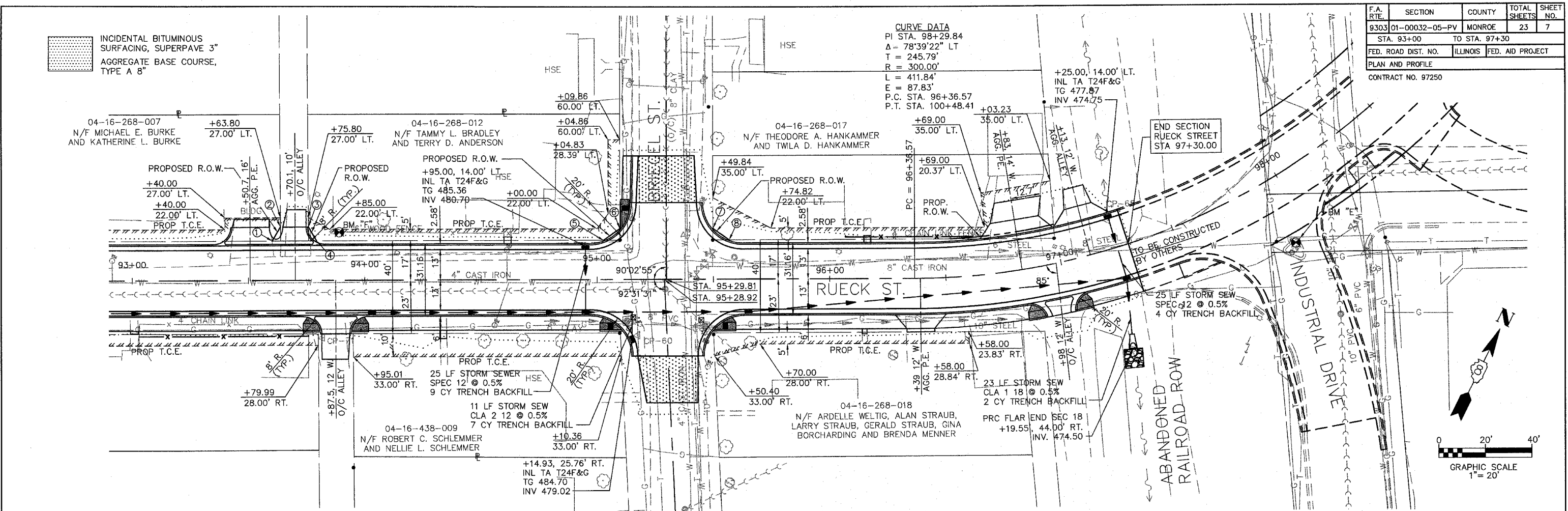
F.A. RTE.	SECTION	COUNTY	TOTAL SHEETS	SHEET NO.
9303	01-00032-05-PV	MONROE	23	7
STA. 93+00		TO STA. 97+30		
FED. ROAD DIST. NO.		ILLINOIS FED. AID PROJECT		
PLAN AND PROFILE				
CONTRACT NO. 97250				

INCIDENTAL BITUMINOUS SURFACING, SUPERPAVE 3" AGGREGATE BASE COURSE, TYPE A 8"

**CURVE DATA**  
 PI STA. 98+29.84  
 $\Delta = 78^{\circ}39'22''$  LT  
 T = 245.79'  
 R = 300.00'  
 L = 411.84'  
 E = 87.83'  
 P.C. STA. 96+36.57  
 P.T. STA. 100+48.41

BY	DATE

BY	DATE



BM "F" SPIKE SET IN POWER POLE NORTH SIDE OF RUECK BETWEEN BRIEGEL AND METTER STA. 93+86.38 20.94 LT ELEV. 488.98

BM "E" SPIKE SET IN POWER POLE STA. 97+91 o/s 31.6' RT ELEV. 478.84

**RIGHT-OF-WAY CONTROLS**

STATION	OFFSET	REMARKS
<b>ALLEY &amp; RUECK ST. (NORTHWESTERN QUAD)</b>		
POINT 1	93+60.26	17.00' LT WEST TERMINUS
POINT 2	93+63.82	23.14' LT EAST TERMINUS
<b>ALLEY &amp; RUECK ST. (NORTHEASTERN QUAD)</b>		
POINT 3	93+75.82	23.13' LT WEST TERMINUS
POINT 4	93+79.37	17.00' LT EAST TERMINUS
<b>METTER ST. &amp; RUECK ST. (NORTHWESTERN QUAD)</b>		
POINT 5	95+02.82	17.00' LT WEST TERMINUS
POINT 6	95+09.83	22.00' LT EAST TERMINUS
<b>METTER ST. &amp; RUECK ST. (NORTHEASTERN QUAD)</b>		
POINT 7	95+49.83	22.00' LT WEST TERMINUS
POINT 8	95+56.82	17.00' LT EAST TERMINUS
<b>RUECK ST. (STATION 96+53 TO 97+00, LEFT)</b>		
PC	96+52.90	16.58' LT WEST TERMINUS
PT	97+00.35	16.58' LT EAST TERMINUS
R CENTER	96+73.57	300.00' LT 283.42' RADIUS