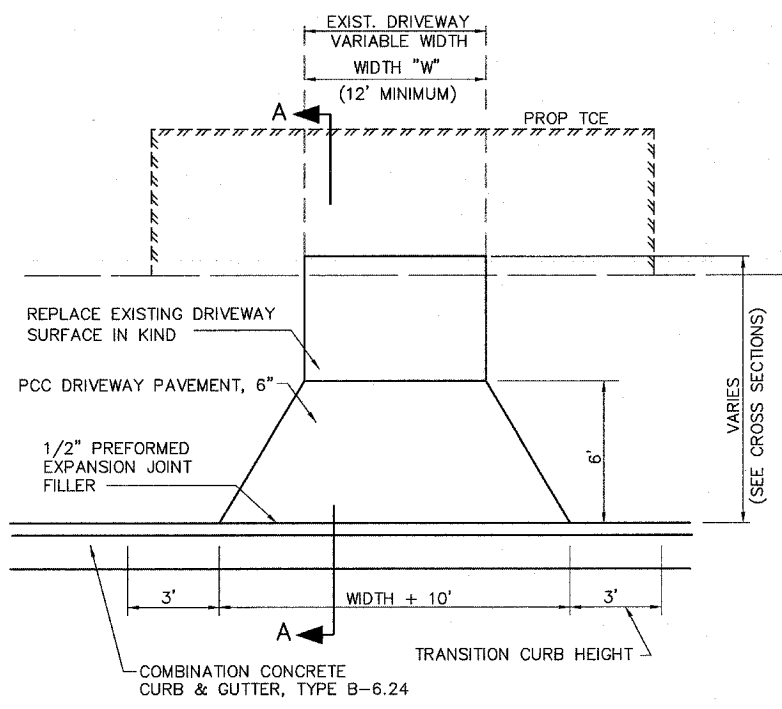
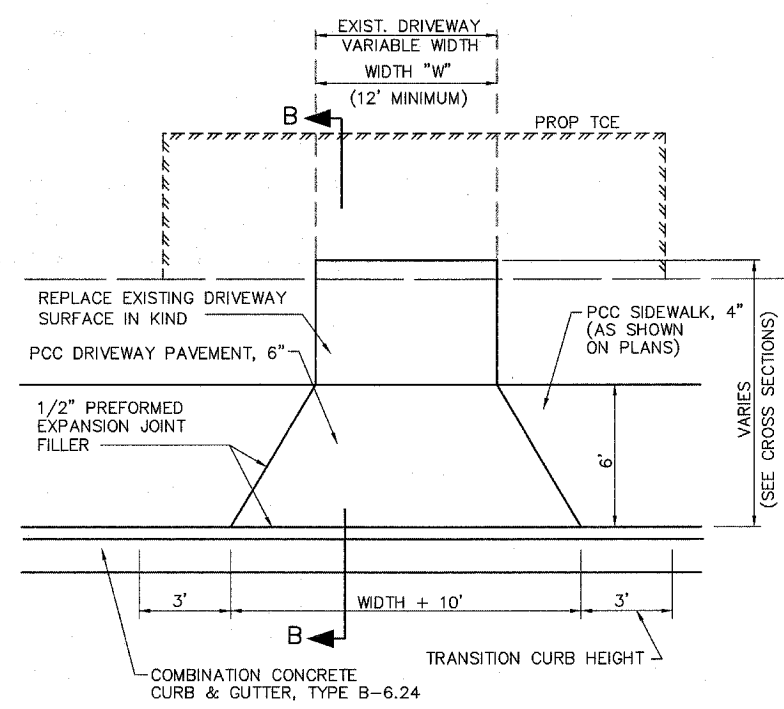


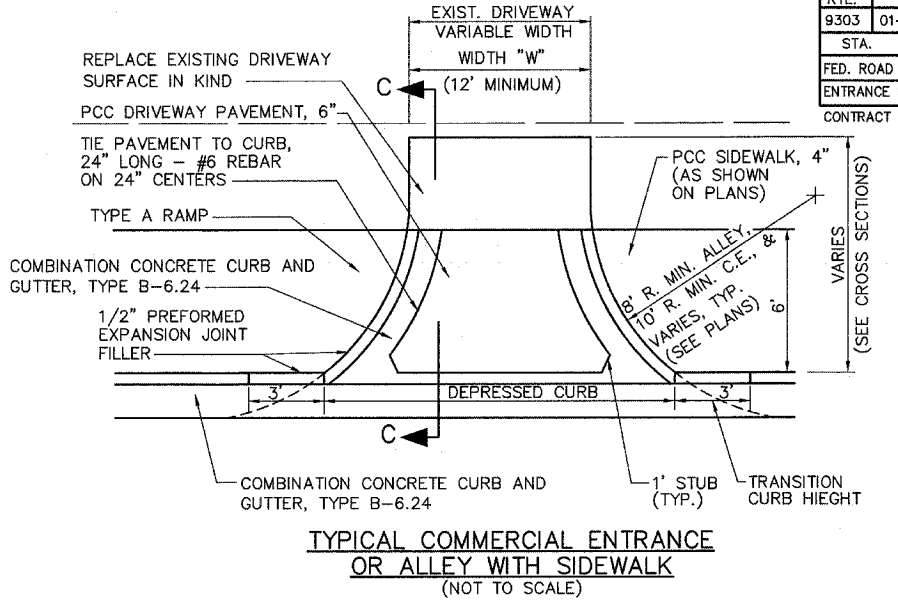
|                               |                |   |              |           |
|-------------------------------|----------------|---|--------------|-----------|
| F.A.U. RTE.                   | SECTION        | COUNTY  | TOTAL SHEETS | SHEET NO. |
| 9303                          | 01-00032-05-PV | MONROE  | 23           | 14        |
| STA. - TO STA. -              |                | FED. ROAD DIST. NO. 8 ILLINOIS FED. AID PROJECT |              |           |
| ENTRANCE SCHEDULE AND DETAILS |                |   |              |           |
| CONTRACT NO. 97250            |                |   |              |           |



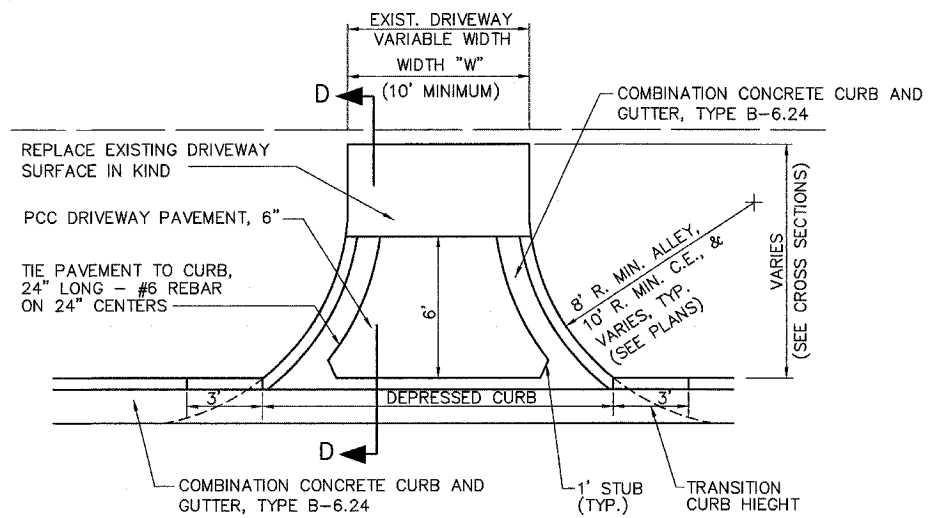
**TYPICAL PRIVATE ENTRANCE DETAIL WITHOUT SIDEWALK**  
(NOT TO SCALE)



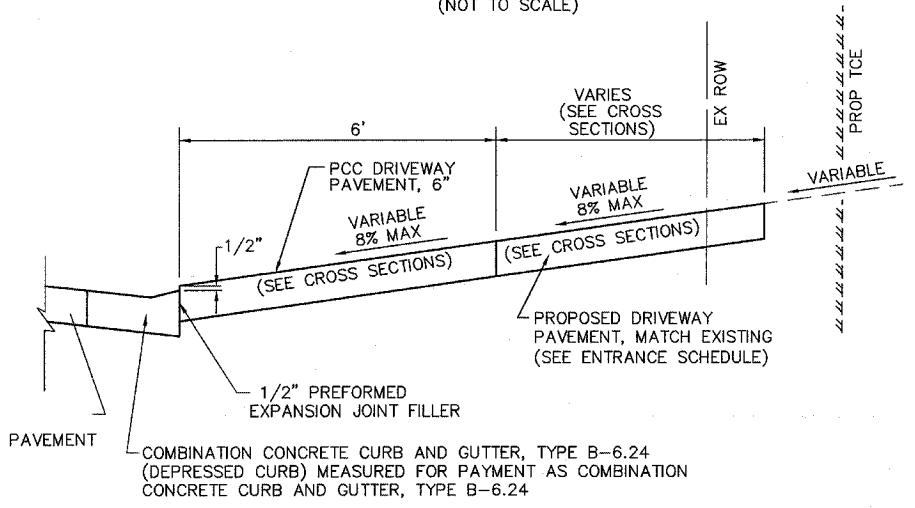
**TYPICAL PRIVATE ENTRANCE DETAIL WITH SIDEWALK**  
(NOT TO SCALE)



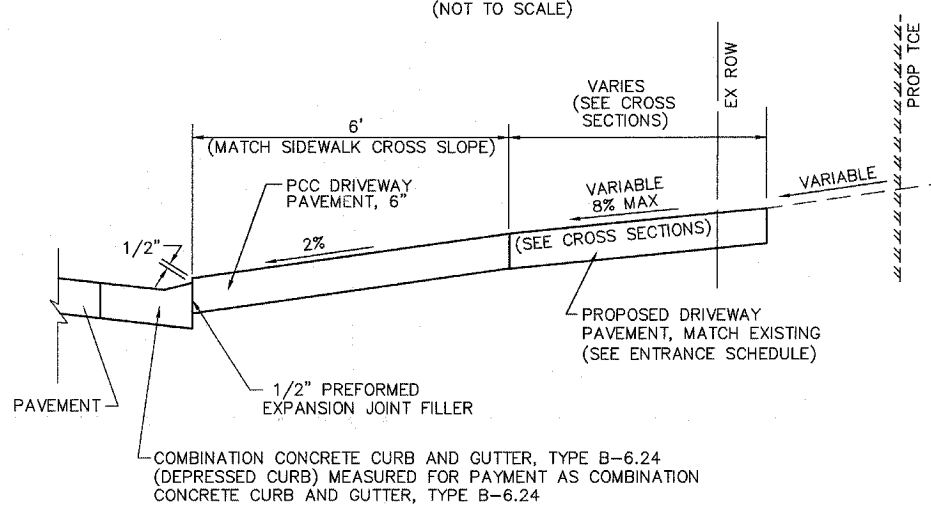
**TYPICAL COMMERCIAL ENTRANCE OR ALLEY WITH SIDEWALK**  
(NOT TO SCALE)



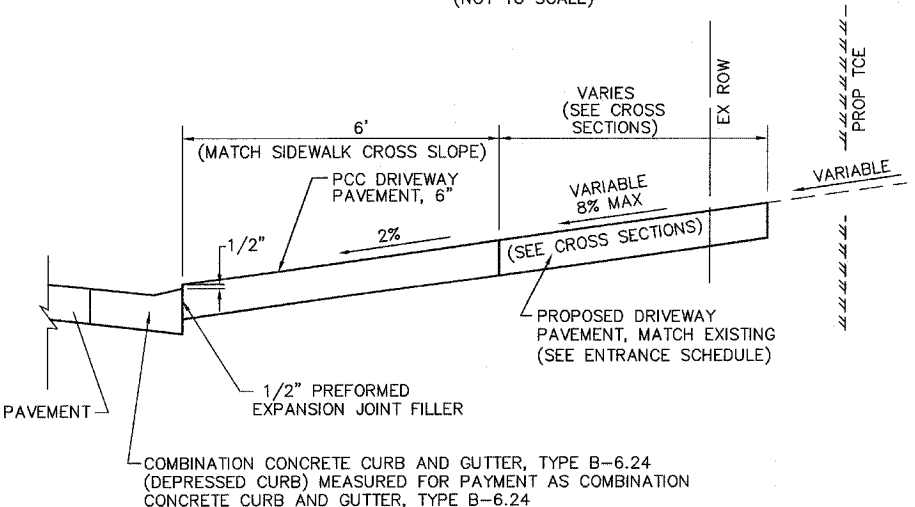
**TYPICAL COMMERCIAL ENTRANCE OR ALLEY WITHOUT SIDEWALK**  
(NOT TO SCALE)



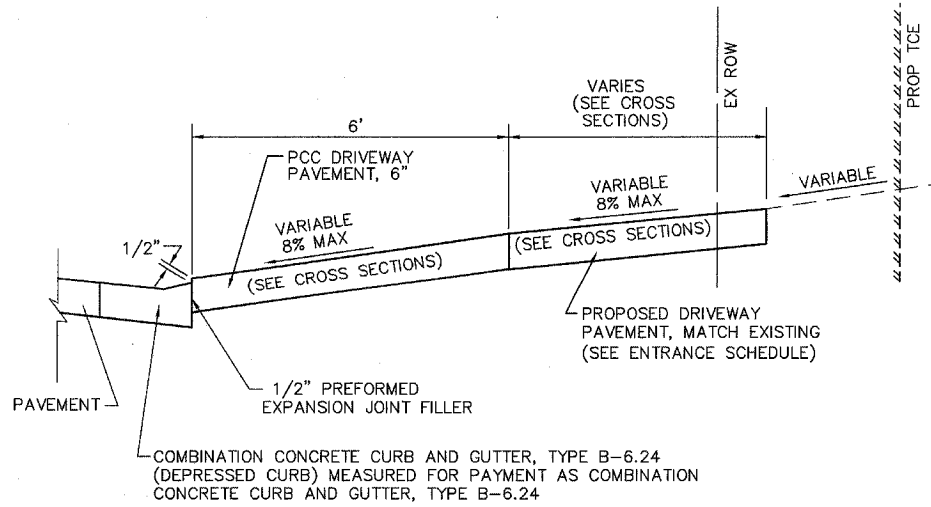
**SECTION A-A**  
(NOT TO SCALE)



**SECTION C-C**  
(NOT TO SCALE)



**SECTION B-B**  
(NOT TO SCALE)



**SECTION D-D**  
(NOT TO SCALE)

**ENTRANCE SCHEDULE**

| STATION             | OFFSET | ENTRANCE TYPE | ENTRANCE WIDTH "W" (NOTE 1) | ENTRANCE DEPTH "D" | EXISTING SURFACE TYPE | AGG BASE CSE A 6 | AGG SURF CSE A 6 | PCC DRIVEWAY PAVT 6 (NOTE 3) | INCIDENTAL BIT SURF (NOTE 2) |
|---------------------|--------|---------------|-----------------------------|--------------------|-----------------------|------------------|------------------|------------------------------|------------------------------|
|                     |        |               | (FOOT)                      | (FOOT)             |                       | 35100500         | 40200500         | 42300200                     | XX004949                     |
|                     |        |               |                             |                    |                       | (SQ YD)          | (SQ YD)          | (SQ YD)                      | (TON)                        |
| <b>RUECK STREET</b> |        |               |                             |                    |                       |                  |                  |                              |                              |
| 88+52.00            | 66' RT | CE            | 20                          | 6                  | BIT                   | 158              |                  | 15                           | 27                           |
| 88+85.00            | RT     | CE            | 12                          | 6                  | BIT                   |                  |                  | 9                            |                              |
| 89+94.00            | RT     | CE            | 35                          | 15                 | BIT                   | 21               |                  | 35                           | 4                            |
| 89+97.00            | LT     | PE            | 12                          | 14.4               | AGG                   |                  | 11               | 11                           |                              |
| 90+76.00            | LT     | PE            | 19                          | 9.4                | AGG                   |                  | 7                | 16                           |                              |
| 90+97.00            | RT     | PE            | 18                          | 21.4               | AGG                   |                  | 29               | 15                           |                              |
| 93+50.70            | LT     | PE            | 16                          | 10.9               | AGG                   |                  | 6                | 16                           |                              |
| 93+70.10            | LT     | ALLEY         | 10                          | 14.8               | O/C                   | 7                |                  | 11                           | 1                            |
| 93+87.50            | RT     | ALLEY         | 12                          | 18.4               | O/C                   | 16               |                  | 10                           | 3                            |
| 96+39.00            | RT     | PE            | 12                          | 7.4                | AGG                   |                  | 2                | 11                           |                              |
| 96+83.00            | LT     | PE            | 14                          | 14.4               | AGG                   |                  | 19               | 18                           |                              |
| 96+98.00            | RT     | ALLEY         | 12                          | 6.0                | O/C                   |                  |                  | 7                            |                              |
| 97+13.00            | LT     | PE            | 12                          | 14.4               | AGG                   |                  | 10               | 12                           |                              |
| <b>TOTAL</b>        |        |               |                             |                    |                       | <b>202</b>       | <b>84</b>        | <b>188</b>                   | <b>35</b>                    |

- ENTRANCE NOTES:**
- PRIOR TO CONSTRUCTION, THE CONTRACTOR SHALL CONTACT EACH PROPERTY OWNER AND VERIFY THE LOCATION AND WIDTH OF ALL ENTRANCES.
  - INCIDENTAL BITUMINOUS SURFACING QUANTITY IS CALCULATED AT A RATE OF 336 LB / SQ YD. BITUMINOUS MATERIALS (PRIME COAT) AND AGGREGATE (PRIME COAT) ARE REQUIRED BUT WILL NOT BE MEASURED SEPARATELY FOR PAYMENT. THE COST FOR BITUMINOUS MATERIALS AND AGGREGATE SHALL BE INCLUDED IN THE CONTRACT UNIT PRICE FOR INCIDENTAL BITUMINOUS SURFACING. INCIDENTAL BITUMINOUS SURFACING SHALL BE 3" THICK. SEE PAVEMENT SCHEDULE FOR ADDITIONAL QUANTITY.
  - DEPRESSED CURB AND GUTTER THROUGH ENTRANCES SHALL BE MEASURED FOR PAYMENT AS COMBINATION CONCRETE CURB AND GUTTER, TYPE B-6.24.