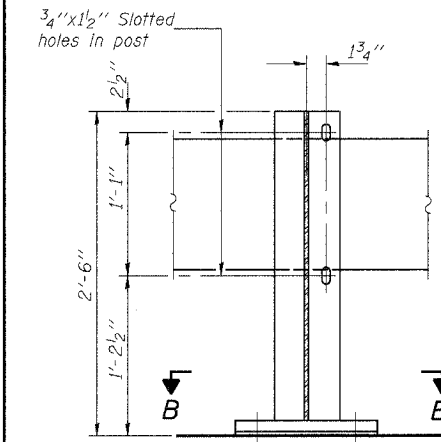
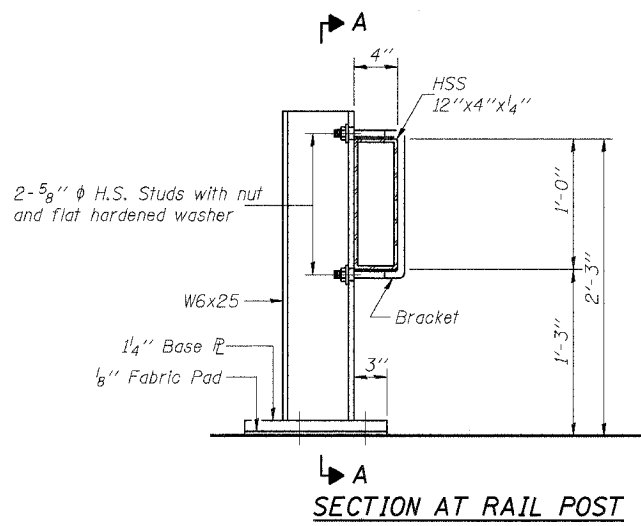


STATE OF ILLINOIS
DEPARTMENT OF TRANSPORTATION

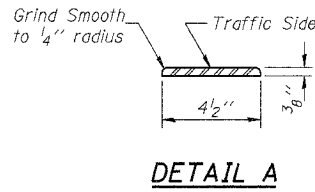
ROUTE NO.	SECTION	COUNTY	SHEETS	SHEET	NO.
F.A.P. 322	*	UNION	39	22	22 SHEETS
FED. ROAD DIST. NO. 7	ILLINOIS	FED. AID PROJECT-			
* (11-IVB)-1			CONTRACT NO. 98488		



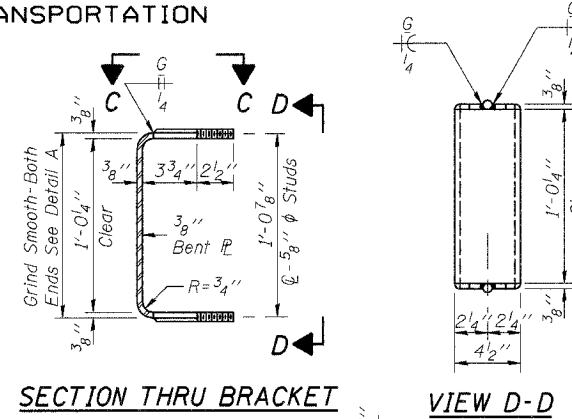
SECTION A-A



SECTION AT RAIL POST

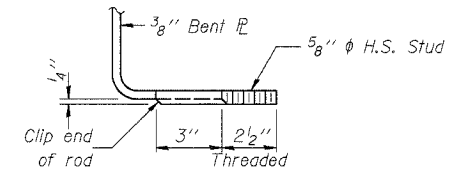


DETAIL A



SECTION THRU BRACKET

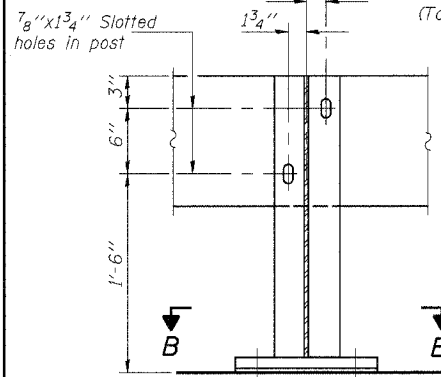
VIEW D-D



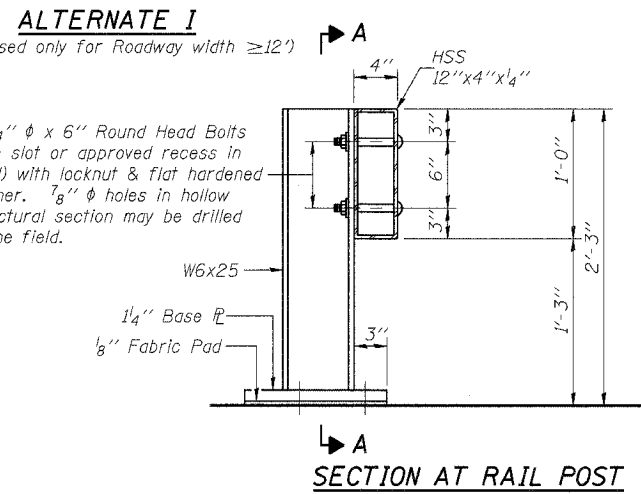
VIEW E-E

NOTES

Hollow structural sections shall conform to the requirements of ASTM designation A 500 Grade B Structural Steel Tubing.
All other steel shapes and plates shall conform to the requirements of AASHTO M 270 Grade 36 except posts and brackets shall conform to AASHTO M 270, Grade 50.
Bolts, cap screws, and nuts shall conform to the requirements of ASTM designation A 307 except for high strength bolts, threaded rods, studs, nuts and washers noted which shall conform to AASHTO M 164.
The bridge rail shall receive one shop coat of a steel prime paint.
The 1" high strength bolts or threaded rods used to connect the railposts shall be tightened according to Article 505.04(f)(2) of the Standard Specifications.
Temporary Bridge Rail shall be according to Section 514 of the Standard Specifications, except as noted, and will be paid for at the contract unit price per foot for Temporary Bridge Rail.
The contact surfaces between post flange, rail and inside face of bracket for Alternate I shall be free of all lubricants.
The nut for 5/8" high strength studs used in Alternate I to connect bracket to post shall be tightened to a snug fit and given an additional one half turn.

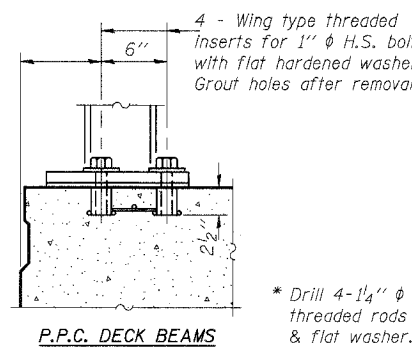


SECTION A-A

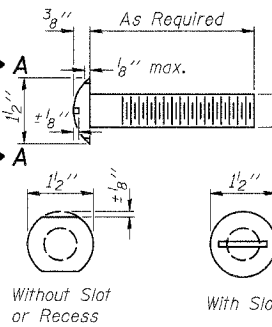


SECTION AT RAIL POST

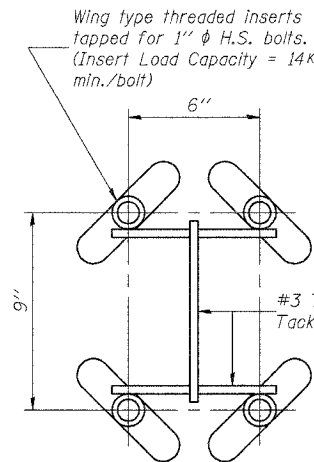
ALTERNATE II



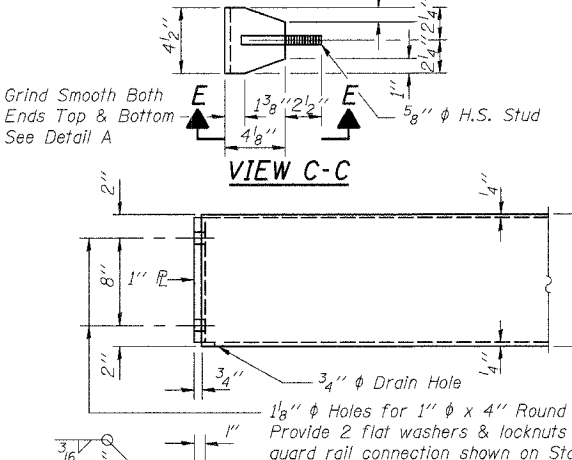
P.P.C. DECK BEAMS



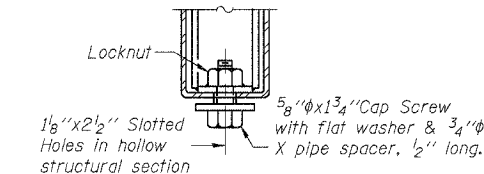
VIEW A-A
ROUND HEAD BOLT



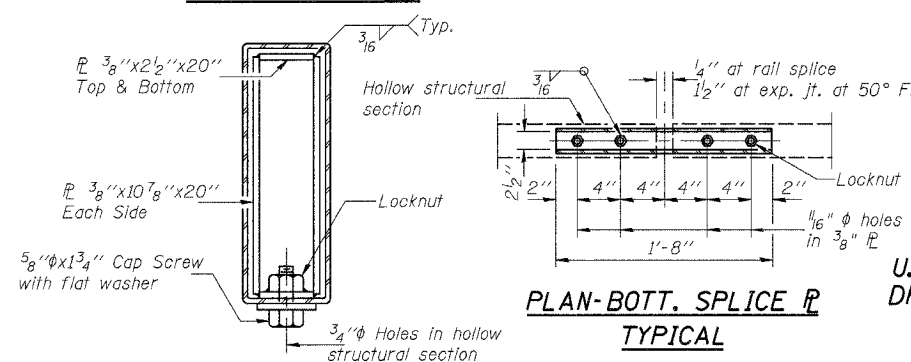
INSERT DETAIL



END OF RAIL DETAILS

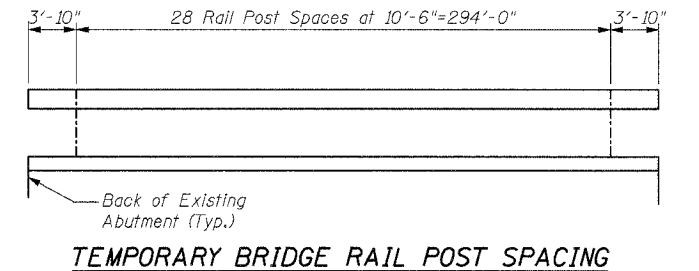


RAIL SPLICE CONNECTION
AT EXPANSION JT.



SECTION AT RAIL SPLICE

PLAN-BOTT. SPLICE R
TYPICAL



TEMPORARY BRIDGE RAIL POST SPACING

BILL OF MATERIAL

Item	Unit	Quantity
Temporary Bridge Rail	Foot	302

TEMPORARY BRIDGE RAIL
U.S. ROUTE 51 OVER TRIBUTARY TO
DRURY CREEK AND CN/IC RAILROAD
FAP 322 - SECTION (11-IVB)-1
UNION COUNTY
STATION 583+74.84
STRUCTURE NO. 091-0073

DESIGNED	GLH
CHECKED	TML
DRAWN	RJN
CHECKED	TML

R-25 10-31-02 (10'-9" Maximum Post Spacing)

02/15/2005