

F.A.P. RTE.	SECTION	COUNTY	TOTAL SHEETS	SHEET NO.
869	FY06 SEEDING	SALINE	14	1

STATE OF ILLINOIS
DEPARTMENT OF TRANSPORTATION
DIVISION OF HIGHWAYS

**PROPOSED
HIGHWAY PLANS**

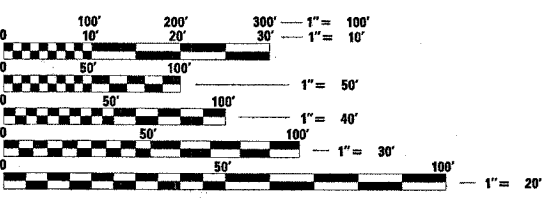
ROUTE: FAP 869 (IL 34)
SECTION: FY06 SEEDING
COUNTY: SALINE
C-99-024-05

FOR INDEX OF SHEETS, SEE SHEET NO. 2
FOR SUMMARY OF QUANTITIES, SEE SHEET NO. 5

STATION EQUATIONS:
NONE

2004 TRAFFIC DATA:
ADT: 2180
TRUCKS: 6.9%

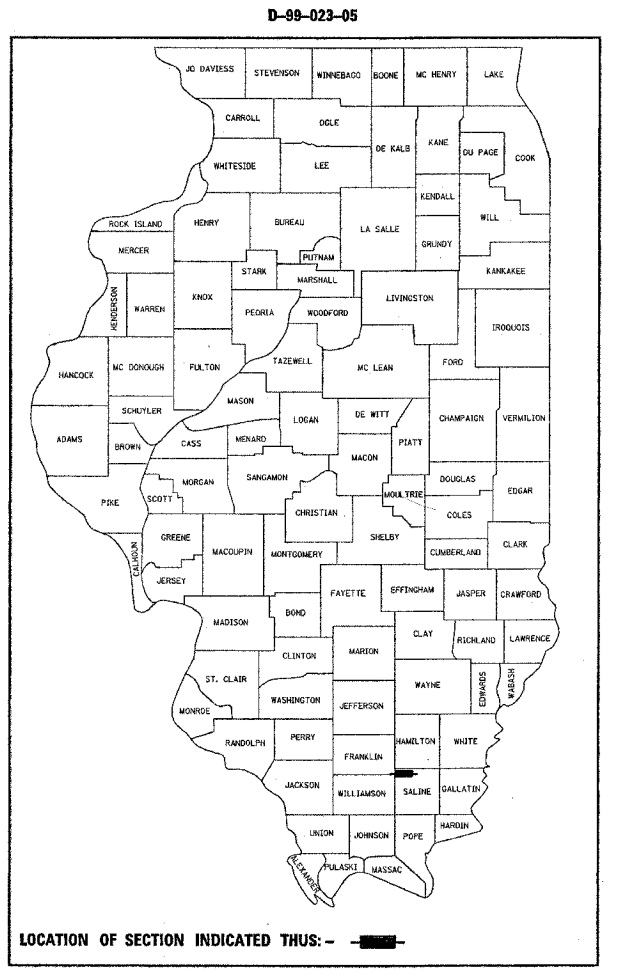
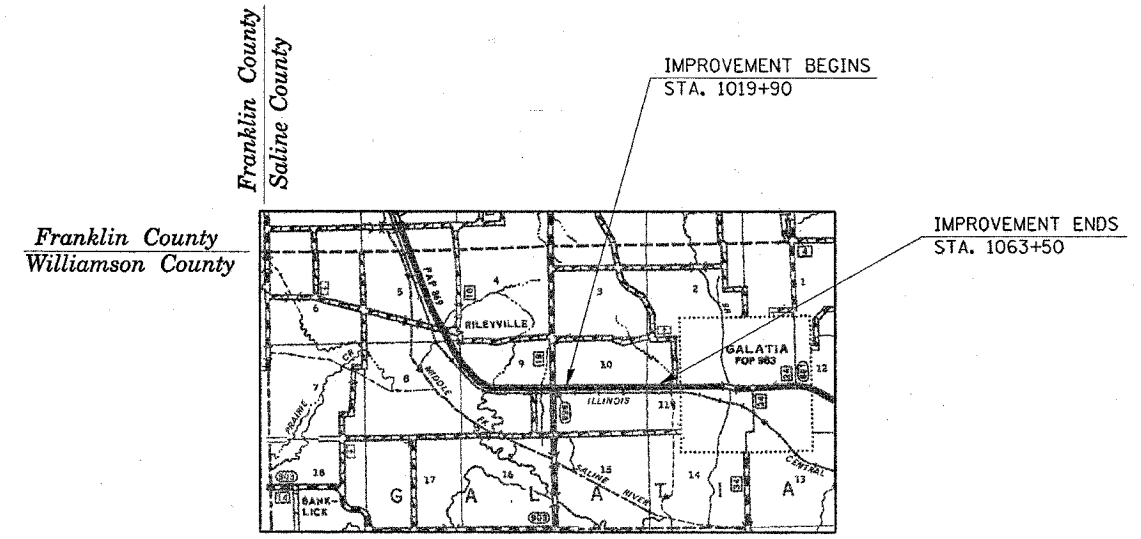
TOWNSHIPS:
GALATIA



FULL SIZE PLANS HAVE BEEN PREPARED USING STANDARD ENGINEERING SCALES. REDUCED SIZED PLANS WILL NOT CONFORM TO STANDARD SCALES. IN MAKING MEASUREMENTS ON REDUCED PLANS, THE ABOVE SCALES MAY BE USED.

J.U.L.I.E.
JOINT UTILITY LOCATION INFORMATION FOR EXCAVATION
1-800-892-0123 or www.julie1call.com

CONTRACT NO. 98916



APPROX. SCALE: 1" = 1 MILE

GROSS LENGTH OF IMPROVEMENT: = 4360' = 0.83 MILES
NET LENGTH OF IMPROVEMENT: = 4360' = 0.83 MILES

STATE OF ILLINOIS
DEPARTMENT OF TRANSPORTATION
DIVISION OF HIGHWAYS

SUBMITTED Feb. 25 20 05

[Signature]
DEPUTY DIRECTOR OF HIGHWAYS, REGION ENGINEER

May 13, 2005
[Signature]
ENGINEER OF DESIGN AND ENVIRONMENT

May 13, 2005
[Signature]
DIRECTOR OF HIGHWAYS, CHIEF ENGINEER

**PRINTED BY THE AUTHORITY
OF THE STATE OF ILLINOIS**

PROJECT ENGINEER: LARRY ANDERSON
SQUAD LEADER: CINDY DETERING
(618) 549-2171
CENTREX: 782-4554