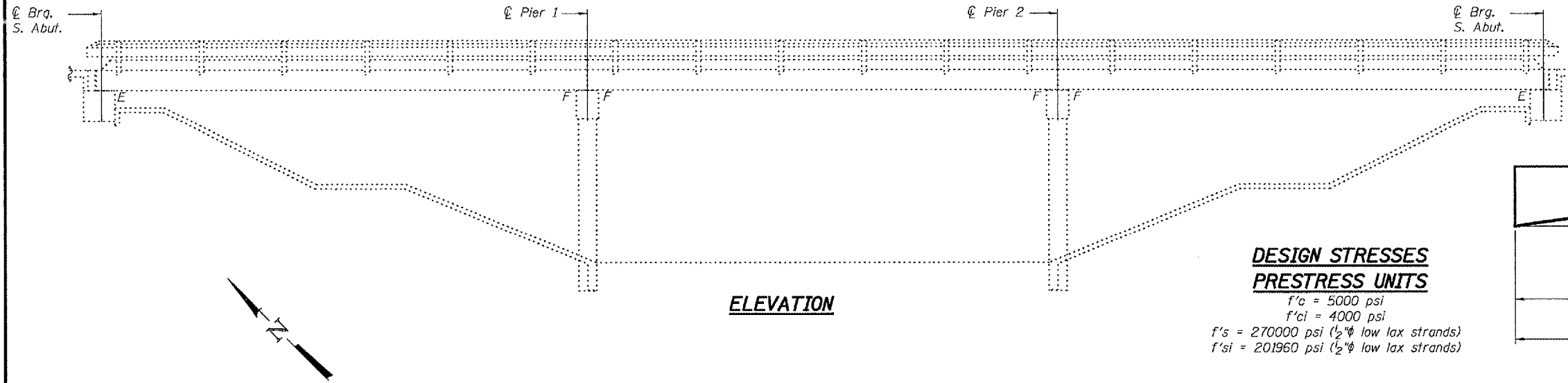


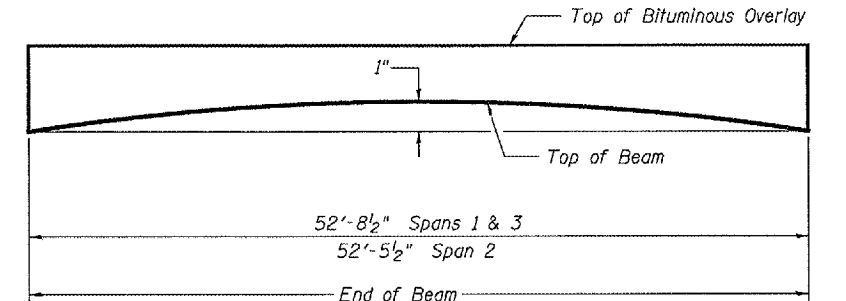
STATE OF ILLINOIS  
DEPARTMENT OF TRANSPORTATION

ROUTE NO.	SECTION	COUNTY	DISTRICT	SHEET	SHEET NO. 1
		Gallatin	7	4	3 SHEETS
FED. HIGH. DIST. NO. 7		ILLINOIS		FED. AID PROJECT	

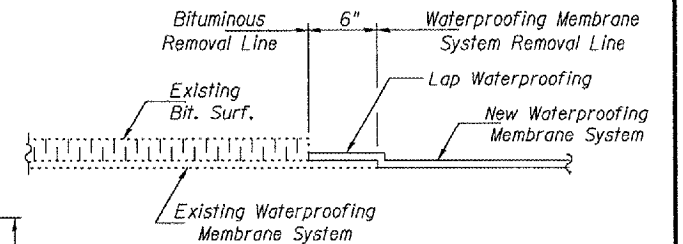
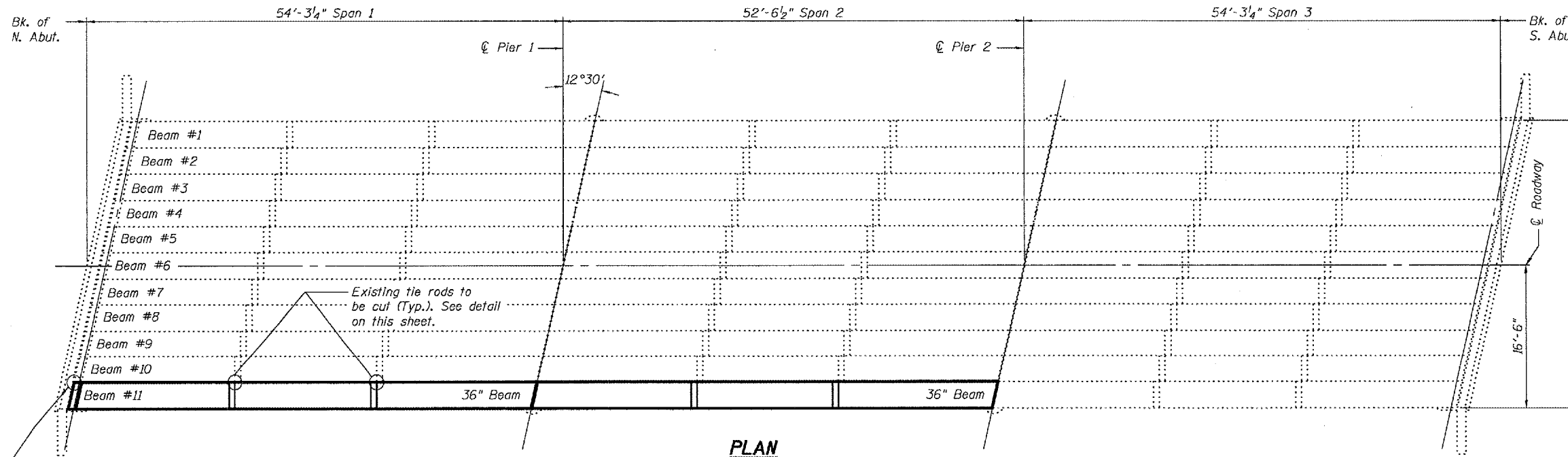
Contract Number: 98920



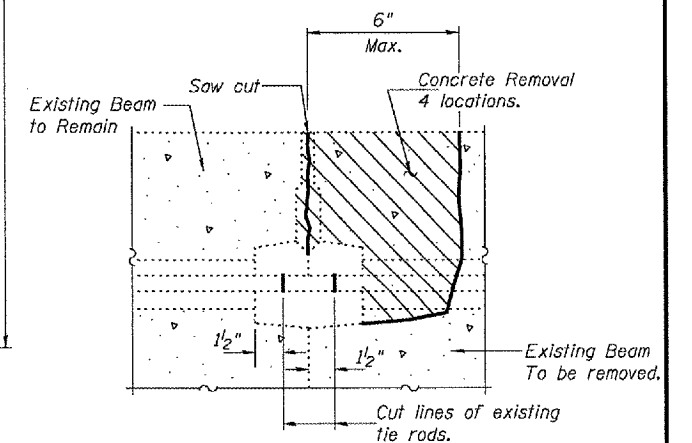
**DESIGN STRESSES  
PRESTRESS UNITS**  
 $f'c = 5000$  psi  
 $f'ci = 4000$  psi  
 $f's = 270000$  psi ( $1/2$ "  $\phi$  low lax strands)  
 $f'si = 201960$  psi ( $1/2$ "  $\phi$  low lax strands)



**ANTICIPATED INITIAL CAMBER DIAGRAM**



**WATERPROOFING TREATMENT**



**BEAM REMOVAL DETAIL  
AT TRANSVERSE TIES**

**GENERAL NOTES**

Plan dimensions and details relative to existing structure have been taken from existing plans and are subject to nominal construction variations. It shall be the Contractor's responsibility to verify such dimensions and details in the field and make necessary approved adjustments prior to construction or ordering of materials. Such variations shall not be cause for additional compensation for a change in the scope of the work, however, the Contractor will be paid for the quantity actually furnished at the unit price bid for the work.

Any damage done to the bridge during beam removal shall be repaired by the Contractor. Cost to be included in the cost of "Removal of Existing P.P.C. Deck Beams".

Reinforcement bars shall conform to the requirements of AASHTO M 31 or M 322 Grade 60.

The top surface of the beams shall be finished in accordance with Article 504.06 of the Standard Specifications except that the surface shall not be roughened by brooming. The finished surface shall be free of depressions or high spots with sharp corners, and the top edge of keys shall be rounded or chamfered a minimum of  $1/4$ ".

**TOTAL BILL OF MATERIAL**

ITEM	UNIT	QUANTITY
Bituminous Concrete Surface Removal	Sq. Yd.	5.8
Waterproofing Membrane System	Sq. Yd.	29.2
Removal of Existing PPC Deck Beams	Sq. Ft.	316
Bituminous Concrete Surface Course, Superpave Mix "C", N90	Tons	5.3
PC Mortar Fairing Course	Foot	105
PPC Deck Beams (27" Depth)	Sq. Ft.	316
Concrete Superstructure	Cu. Yd.	3.9
Protective Coat	Sq. Yd.	20.7
Asbestos Bearing Pad Removal	Each	2
Reinforcement Bars Epoxy Coated	Pound	120
Removing and Re-Erecting Existing Railing	Foot	107

All structural steel shall be shop painted with the inorganic zinc rich primer per AASHTO M300, Type 1. Cost included with PPC Deck Beams (27"). Existing reinforcement extending into the removal area shall be cleaned, straightened and incorporated into the new construction.

**PLAN AND ELEVATION  
F.A. RT. 782  
GALLATIN COUNTY  
SN 030-0018**

Cut existing WT section 6" from edge of beam, prior to beam removal. See detail on sheet 3 of 3.

DESIGNED Victor H. Velik  
 CHECKED [Signature]  
 DRAWN [Signature]  
 CHECKED VHV / S.J.B.

EXAMINED John A. Morris  
 PASSED Ralph C. Anderson  
 ENGINEER OF STRUCTURAL SERVICES  
 ENGINEER OF BRIDGES AND STRUCTURES



Expires: November 30, 2006