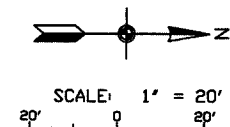


F. A. U. ROUTE	SECTION	COUNTY	TOTAL SHEETS	SHEET NUMBER
9732	00-00102-00-FP	JACKSON	27	5
JOB NO. C-99-033-03	PROJECT NO. M-5008(17)			
CITY OF CARBONDALE		CONTRACT NO. 99175		

**LEGEND**

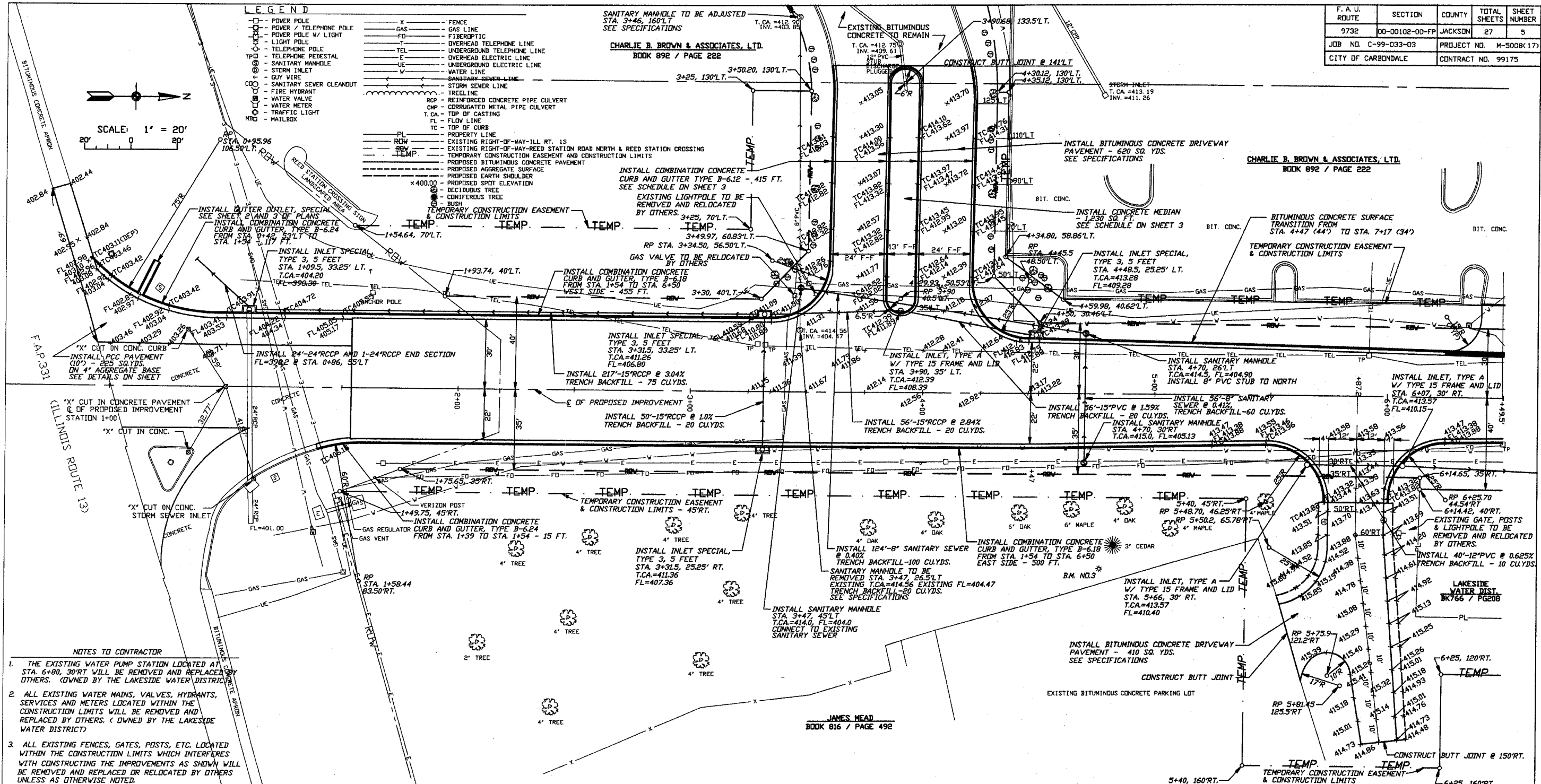
- POWER POLE
- POWER / TELEPHONE POLE
- POWER POLE W/ LIGHT
- LIGHT POLE
- TELEPHONE POLE
- TELEPHONE PEDESTAL
- SANITARY MANHOLE
- STORM INLET
- GUY WIRE
- SANITARY SEWER CLEANOUT
- FIRE HYDRANT
- WATER VALVE
- WATER METER
- TRAFFIC LIGHT
- MAILBOX



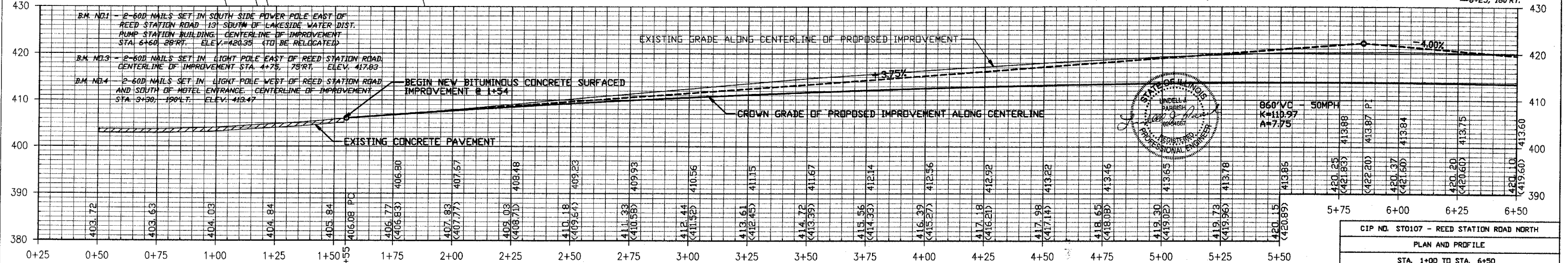
SANITARY MANHOLE TO BE ADJUSTED  
STA. 3+46, 160'L.T.  
SEE SPECIFICATIONS

CHARLIE B. BROWN & ASSOCIATES, LTD.  
BOOK 892 / PAGE 222

CHARLIE B. BROWN & ASSOCIATES, LTD.  
BOOK 892 / PAGE 222



- NOTES TO CONTRACTOR**
- THE EXISTING WATER PUMP STATION LOCATED AT STA. 6+80, 30'RT WILL BE REMOVED AND REPLACED BY OTHERS. (OWNED BY THE LAKE SIDE WATER DISTRICT)
  - ALL EXISTING WATER MAINS, VALVES, HYDRANTS, SERVICES AND METERS LOCATED WITHIN THE CONSTRUCTION LIMITS WILL BE REMOVED AND REPLACED BY OTHERS. (OWNED BY THE LAKE SIDE WATER DISTRICT)
  - ALL EXISTING FENCES, GATES, POSTS, ETC. LOCATED WITHIN THE CONSTRUCTION LIMITS WHICH INTERFERES WITH CONSTRUCTING THE IMPROVEMENTS AS SHOWN WILL BE REMOVED AND REPLACED OR RELOCATED BY OTHERS UNLESS AS OTHERWISE NOTED.



CIP NO. ST0107 - REED STATION ROAD NORTH  
PLAN AND PROFILE  
STA. 1+00 TO STA. 6+50