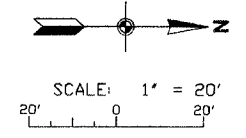


F. A. U. ROUTE	SECTION	COUNTY	TOTAL SHEETS	SHEET NUMBER
9732	00-00102-00-FP	JACKSON	27	21
JOB NO. C-99-033-03	PROJECT NO. M-500B(17)			
CITY OF CARBONDALE	CONTRACT NO. 99175			

LEGEND

□	POWER POLE	— X —	FENCE
□	POWER / TELEPHONE POLE	— GAS —	GAS LINE
□	POWER POLE W/ LIGHT	— FD —	FIBEROPTIC LINE
□	TELEPHONE POLE	— T —	OVERHEAD TELEPHONE LINE
□	TELEPHONE PEDESTAL	— TEL —	UNDERGROUND TELEPHONE LINE
□	TELEPHONE MANHOLE	— E —	OVERHEAD ELECTRIC LINE
□	SANITARY MANHOLE	— UE —	UNDERGROUND ELECTRIC LINE
□	STORM INLET	— W —	WATER LINE
□	GUY WIRE	— S —	SANITARY SEWER LINE
□	SANITARY SEWER CLEANOUT	— SS —	STORM SEWER LINE
□	FIRE HYDRANT	— RCP —	REINFORCED CONCRETE PIPE CULVERT
□	WATER VALVE	— CMP —	CORRUGATED METAL PIPE CULVERT
□	WATER METER	— FL —	FLOW LINE
□	TRAFFIC LIGHT	— T.C.A. —	TOP OF CASTING
□	MAILBOX	— TC —	TOP OF CURB
— PL —	PROPERTY LINE	— ROW —	EXISTING RIGHT-OF-WAY-ILL. RT. 13
— ROW —	EXISTING RIGHT-OF-WAY-REED STATION ROAD NORTH & REED STATION CROSSING	— TEMP —	TEMPORARY CONSTRUCTION EASEMENT AND CONSTRUCTION LIMITS
— TEMP —	TEMPORARY CONSTRUCTION EASEMENT AND CONSTRUCTION LIMITS	— PAV —	PROPOSED BITUMINOUS CONCRETE PAVEMENT
— PAV —	PROPOSED BITUMINOUS CONCRETE PAVEMENT	— AGG —	PROPOSED AGGREGATE SURFACE
— AGG —	PROPOSED AGGREGATE SURFACE	— E.S. —	PROPOSED EARTH SHOULDER
— E.S. —	PROPOSED EARTH SHOULDER	— DT —	DECIDUOUS TREE
— DT —	DECIDUOUS TREE	— CT —	CONIFEROUS TREE
— CT —	CONIFEROUS TREE	— B —	BUSH
— B —	BUSH	— EC —	EXISTING CONTOUR
— EC —	EXISTING CONTOUR	— PC —	PROPOSED CONTOUR

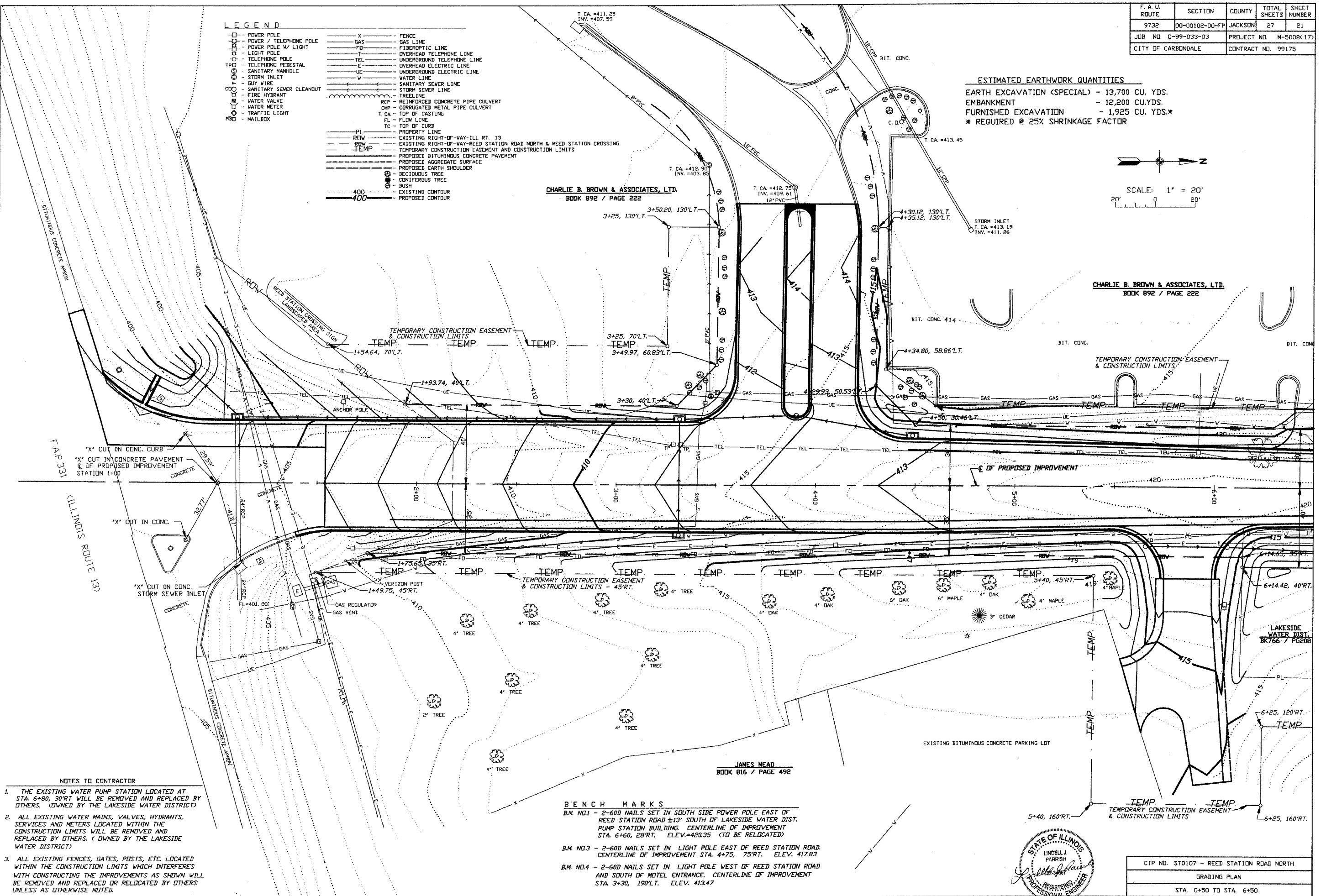
ESTIMATED EARTHWORK QUANTITIES
 EARTH EXCAVATION (SPECIAL) - 13,700 CU. YDS.
 EMBANKMENT - 12,200 CU.YDS.
 FURNISHED EXCAVATION - 1,925 CU. YDS.*
 * REQUIRED @ 25% SHRINKAGE FACTOR



CHARLIE B. BROWN & ASSOCIATES, LTD.
 BOOK 892 / PAGE 222

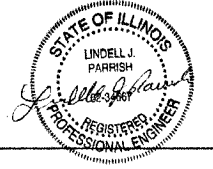
CHARLIE B. BROWN & ASSOCIATES, LTD.
 BOOK 892 / PAGE 222

JAMES MEAD
 BOOK 816 / PAGE 492



- NOTES TO CONTRACTOR**
1. THE EXISTING WATER PUMP STATION LOCATED AT STA. 6+90, 30'RT WILL BE REMOVED AND REPLACED BY OTHERS. (OWNED BY THE LAKESIDE WATER DISTRICT)
 2. ALL EXISTING WATER MAINS, VALVES, HYDRANTS, SERVICES AND METERS LOCATED WITHIN THE CONSTRUCTION LIMITS WILL BE REMOVED AND REPLACED BY OTHERS. (OWNED BY THE LAKESIDE WATER DISTRICT)
 3. ALL EXISTING FENCES, GATES, POSTS, ETC. LOCATED WITHIN THE CONSTRUCTION LIMITS WHICH INTERFERES WITH CONSTRUCTING THE IMPROVEMENTS AS SHOWN WILL BE REMOVED AND REPLACED OR RELOCATED BY OTHERS UNLESS AS OTHERWISE NOTED.

- BENCH MARKS**
- B.M. NO.1 - 2-60D NAILS SET IN SOUTH SIDE POWER POLE EAST OF REED STATION ROAD ±13' SOUTH OF LAKESIDE WATER DIST. PUMP STATION BUILDING. CENTERLINE OF IMPROVEMENT STA. 6+60, 28'RT. ELEV.=420.35 (TO BE RELOCATED)
 - B.M. NO.3 - 2-60D NAILS SET IN LIGHT POLE EAST OF REED STATION ROAD. CENTERLINE OF IMPROVEMENT STA. 4+75, 75'RT. ELEV. 417.83
 - B.M. NO.4 - 2-60D NAILS SET IN LIGHT POLE WEST OF REED STATION ROAD AND SOUTH OF MOTEL ENTRANCE. CENTERLINE OF IMPROVEMENT STA. 3+30, 190'LT. ELEV. 413.47



CIP NO. ST0107 - REED STATION ROAD NORTH
GRADING PLAN
STA. 0+50 TO STA. 6+50