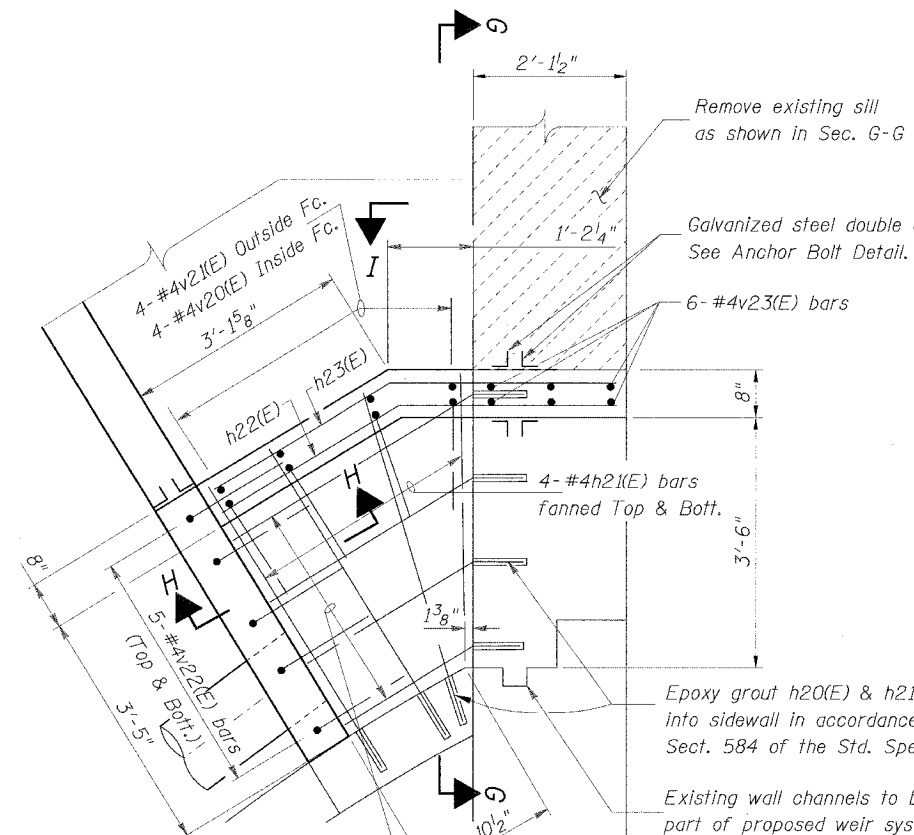
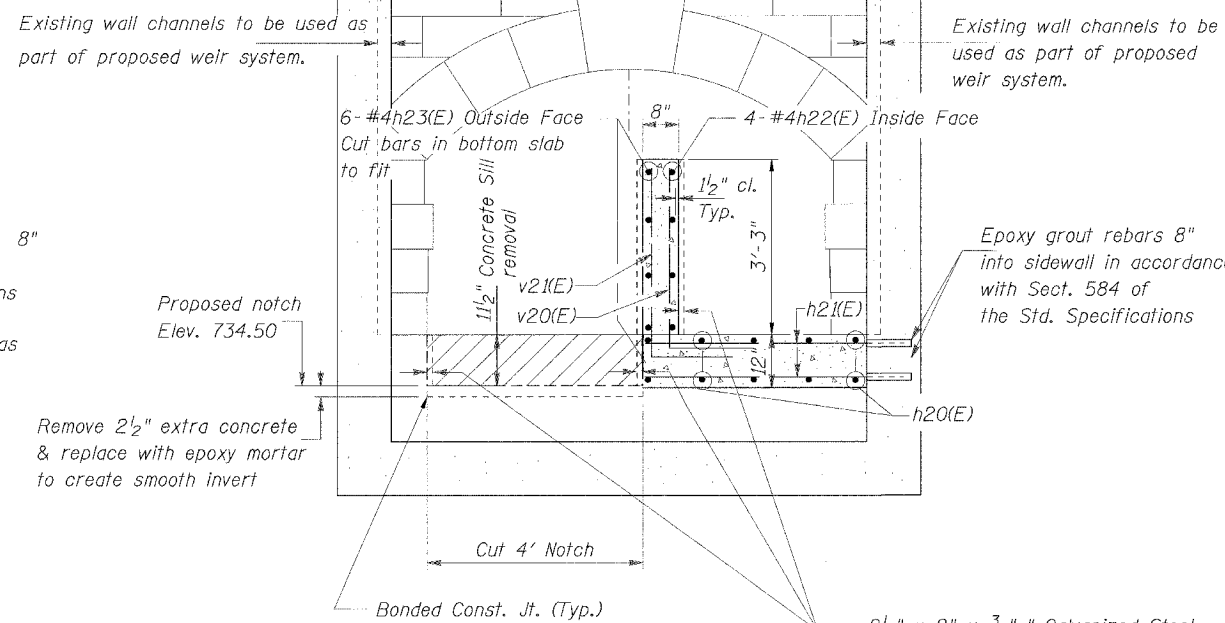


NOTES:

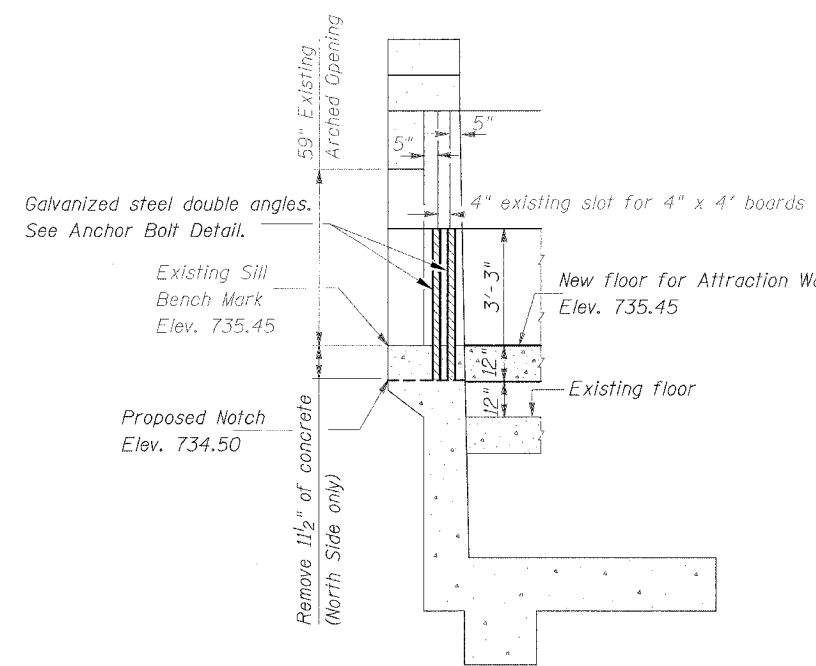
Structural steel shall be galvanized in accordance with AASHTO M-111 and ASTM A-385.
Reinforcement bars designated (E) shall be epoxy coated.



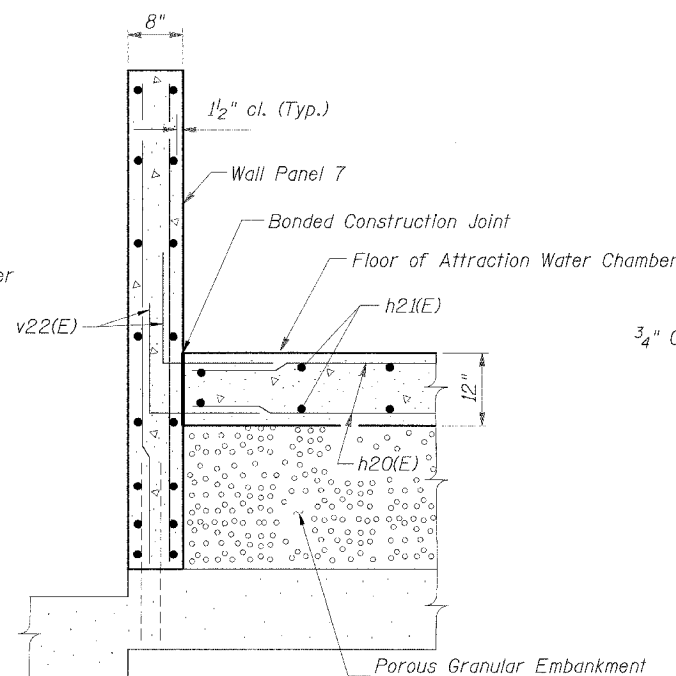
ATTRACTION WATER CHAMBER DETAIL



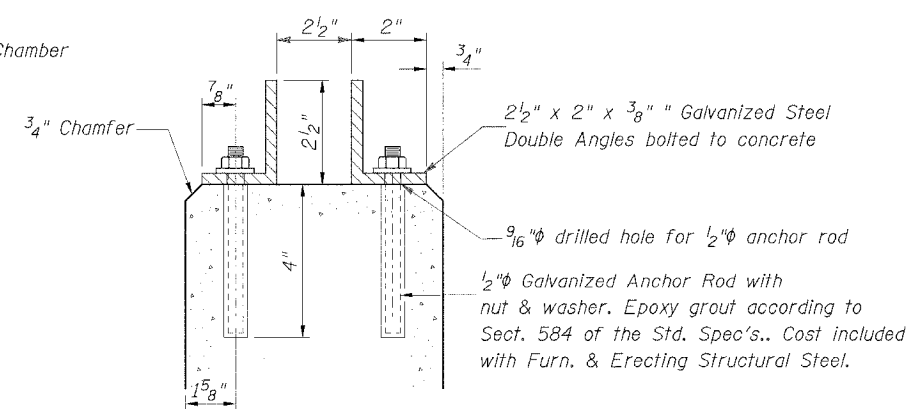
SECTION G-G



SECTION I-I



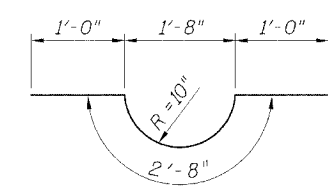
SECTION H-H



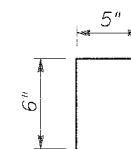
ANCHOR ROD DETAIL

DESIGN STRESSES

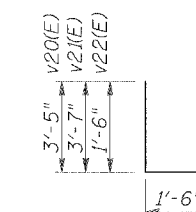
f'c = 3,500 p.s.i.
fy = 60,000 p.s.i.



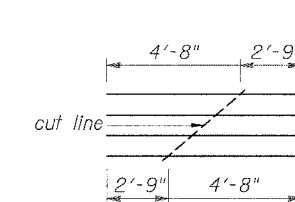
BAR u(E)



BAR d(E)

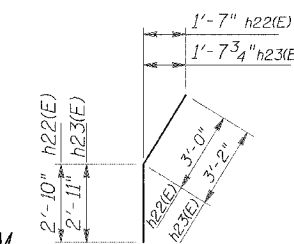


BARS v20(E), v21(E), & v22(E)



BAR CUTTING DIAGRAM

BAR h20(E)



BARS h22(E) & h23(E)

BILL OF MATERIAL

BAR	NO.	SIZE	LENGTH	SHAPE
d(E)	35	#4	1'-5"	□
d1(E)	32	#4	1'-6"	—
h(E)	28	#4	7'-9"	—
h1(E)	50		3'-10"	—
h2(E)	40		2'-3"	—
h20(E)	4		7'-5"	—
h21(E)	8		4'-6"	—
h22(E)	4		5'-10"	—
h23(E)	6		6'-1"	—
u(E)	6		4'-8"	—
v(E)	20		3'-8"	—
v1(E)	10		3'-3"	—
v2(E)	10		4'-1"	—
v3(E)	10		3'-7"	—
v4(E)	10		2'-10"	—
v5(E)	10		5'-1"	—
v20(E)	4		4'-11"	—
v21(E)	4		5'-1"	—
v22(E)	10		3'-0"	—
v23(E)	6	#4	3'-1"	—
Concrete Removal			Cu Yd	2.9
Concrete Structures			Cu Yd	4.3
Reinforcement Bars, Epoxy Coated			Pound	730
12" HDPE Pipe SDR 17.0			Foot	53
Furnishing & Erecting Structural Steel			Pound	540
Stone Dumped Riprap, Cl. A4			Sq Yd	17
Filter Fabric for Use with Riprap			Sq Yd	17
Temporary Cofferdam System			Each	1

Designed by T.M.M. Checked by J.J.F.
Drawn by J.J.F. Checked by T.M.M.