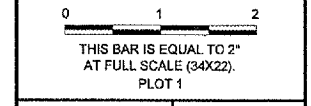


REVISIONS		
NUMBER	BY	DATE



Greater Peoria Regional Airport

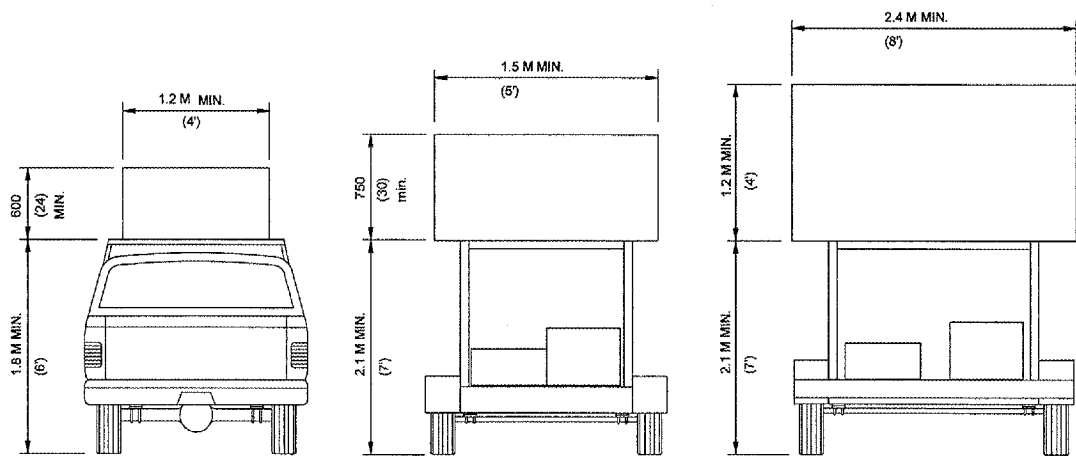
CONSTRUCT, LIGHT & MARK WEST LONG TERM PARKING LOT

CMT
CRAWFORD, MURPHY & TILLY, INC.
CONSULTING ENGINEERS

IL PROJECT NUMBER
PIA-3385

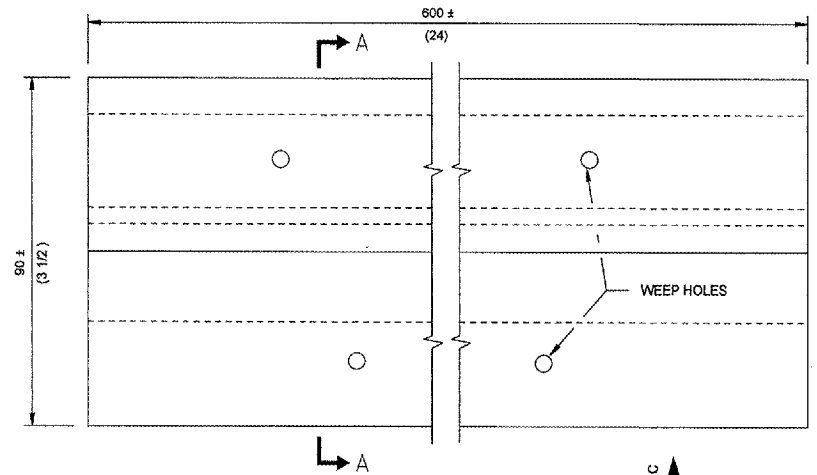
FILE:
DESIGN BY: BWG
DRAWN BY: JSP
CHECKED BY: BJS
APPROVED BY: GET
DATE: JUNE 17, 2005
JOB No: 05061-03-00

TRAFFIC CONTROL DEVICES
SHEET 2 OF 2
SHEET 9 OF 41 SHEETS

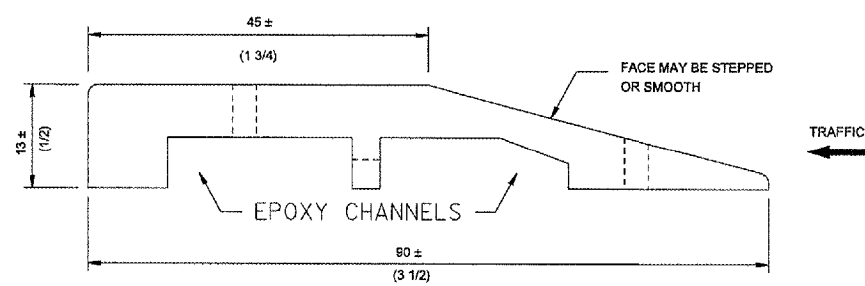


TYPE A ROOF MOUNTED
TYPE B ROOF OR TRAILER MOUNTED
TYPE C TRAILER MOUNTED

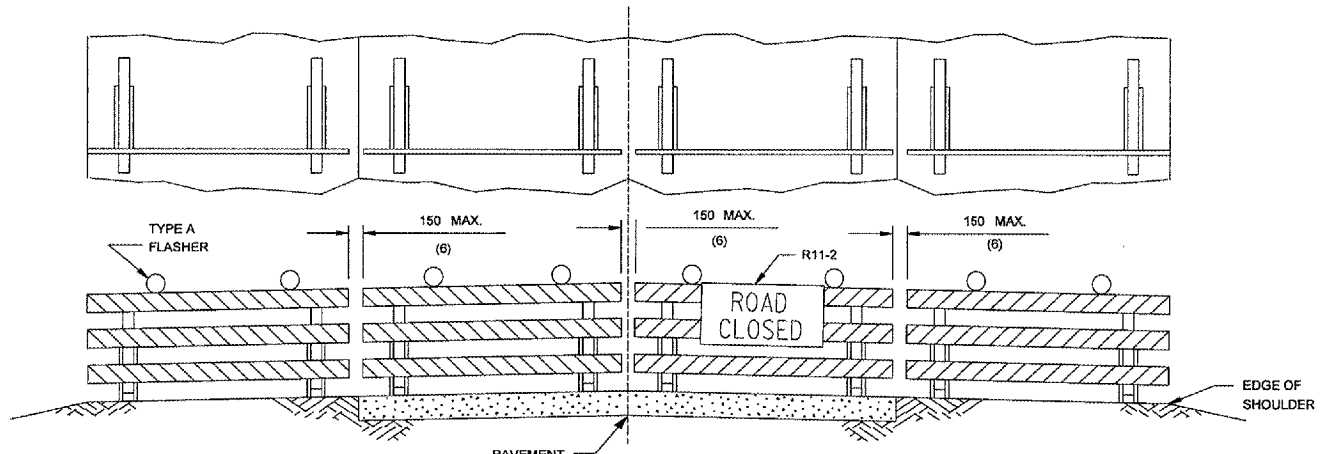
ARROW BOARDS



PLAN



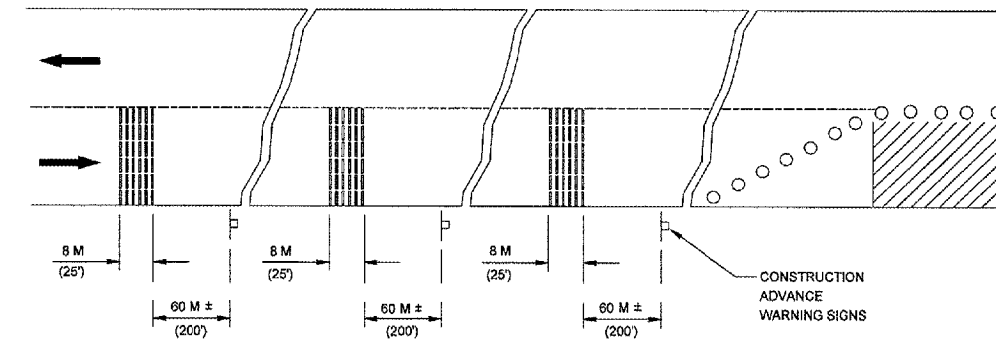
SECTION A-A



ROAD CLOSED TO ALL TRAFFIC

REFLECTORIZED STRIPING MAY BE OMITTED ON THE BACK SIDE OF THE BARRICADES. IF A TYPE III BARRICADE WITH AN ATTACHED SIGN PANEL WHICH MEETS NCHRP 350 IS NOT AVAILABLE, THE SIGN MAY BE MOUNTED ON AN NCHRP 350 TEMPORARY SIGN SUPPORT DIRECTLY IN FRONT OF THE BARRICADE.

TYPICAL APPLICATIONS OF TYPE III BARRICADES CLOSING A ROAD



TYPICAL INSTALLATION

TEMPORARY RUMBLE STRIPS

ALL DIMENSIONS ARE IN MILLIMETERS (INCHES) UNLESS OTHERWISE SHOWN.

TRAFFIC CONTROL DEVICES

(Sheet 3 of 3)

STANDARD 702001-03

Illinois Department of Transportation

APPROVED January 1, 2003
Michael J. Hone
ENGINEER OF OPERATIONS

APPROVED January 1, 2003
Michael J. Hone
ENGINEER OF DESIGN AND ENVIRONMENT

ISSUED 1-1-97

05/26/2005 k:\peoria\0506103\drawings\sheet\09_traffic_control_devices_2.dgn