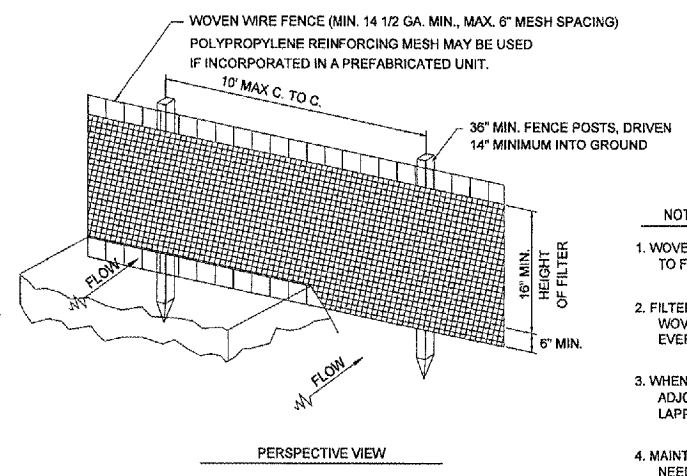


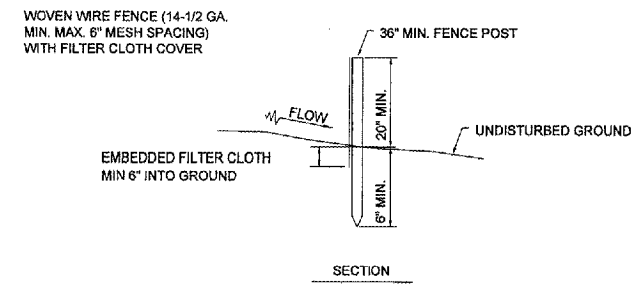
REVISIONS		
NUMBER	BY	DATE

0 1 2
THIS BAR IS EQUAL TO 2" AT FULL SCALE (34X22).
PLOT 1



NOTES:

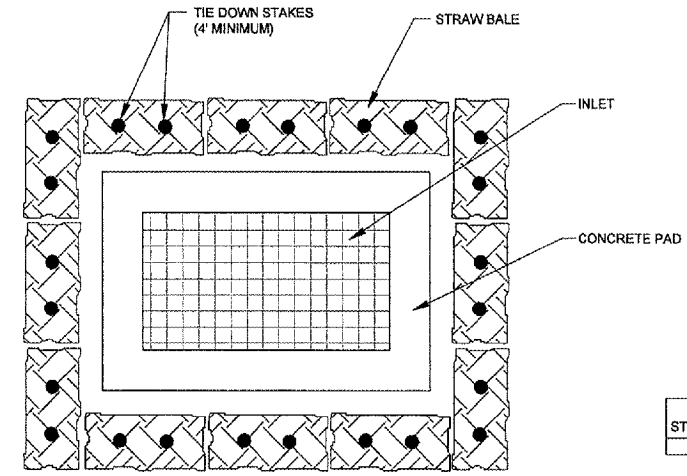
1. WOVEN WIRE FENCE TO BE FASTENED SECURELY TO FENCE POSTS WITH WIRE TIES OR STAPLES.
2. FILTER CLOTH TO BE FASTENED SECURELY TO WOVEN WIRE FENCE WITH TIES SPACED EVERY 24" AT TOP AND MID SECTION.
3. WHEN TWO SECTIONS OF FILTER CLOTH ADJOIN EACH OTHER THEY SHALL BE OVERLAPPED BY 6" MIN. AND FOLDED.
4. MAINTENANCE SHALL BE PERFORMED AS NEEDED AND MATERIAL REMOVED WHEN "BULGES" DEVELOP IN THE SILT FENCE. MAINTENANCE, WHICH INCLUDES THE REPLACEMENT OF DAMAGED FENCE SHALL BE CONSIDERED INCIDENTAL TO THE COST OF THE EROSION CONTROL FENCE.



- POSTS: STEEL EITHER T OR U TYPE OR 2" HARDWOOD
- FENCE: WOVEN WIRE, 14-1/2 GA. 6" MAX MESH OPENING POLYPROPYLENE MESH, IF INCORPORATED IN PREFAB UNIT.
- FILTER CLOTH: FILTER X, MIRA F1100X, STABILINKA T140N OR EQUAL
- PREFABRICATED UNIT: GEOFAB ENVIROFENCE, GSI SILT FENCE WITH REINFORCING MESH OR EQUAL

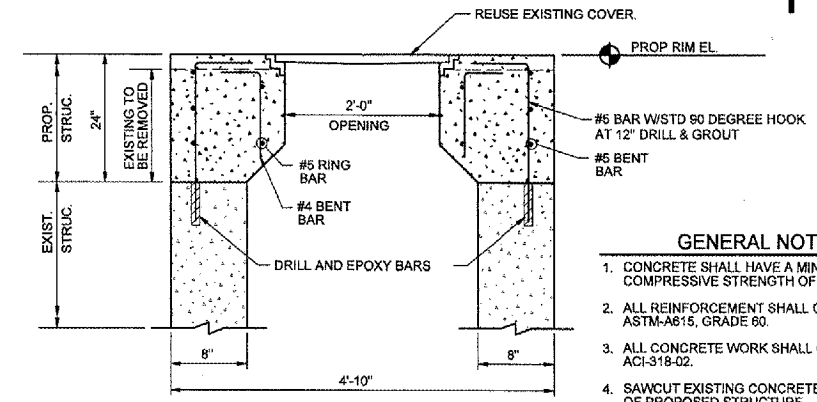
EROSION CONTROL FABRIC FENCE DETAIL

N.T.S.



INLET EROSION PROTECTION DETAIL

N.T.S.

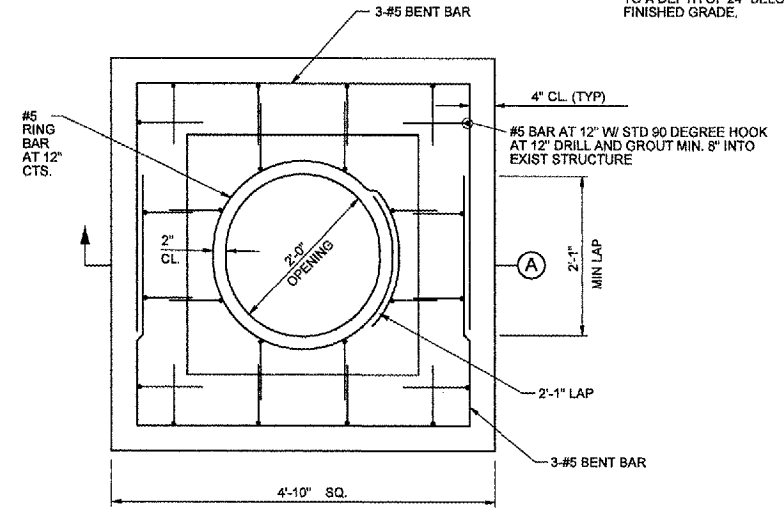


GENERAL NOTES:

1. CONCRETE SHALL HAVE A MINIMUM 28 DAY COMPRESSIVE STRENGTH OF 4000 PSI.
2. ALL REINFORCEMENT SHALL CONFORM TO ASTM-A615, GRADE 60.
3. ALL CONCRETE WORK SHALL CONFORM TO ACI-318-02.
4. SAWCUT EXISTING CONCRETE AT LOCATIONS OF PROPOSED STRUCTURE.
5. TOP OF STRUCTURE TO RECEIVE A BROOM FINISH.
6. REMOVE THE EXISTING TOP OF STRUCTURE TO A DEPTH OF 24" BELOW THE PROPOSED FINISHED GRADE.

STRUCTURE	EXISTING RIM EL.	PROPOSED RIM EL.
M.H. #1	640.42	638.94

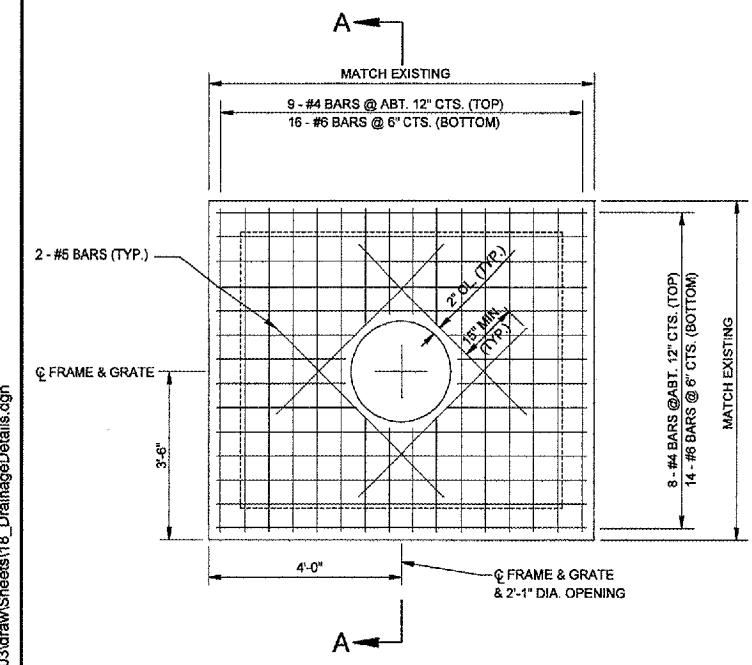
SECTION A



MANHOLE ADJUSTMENT DETAIL

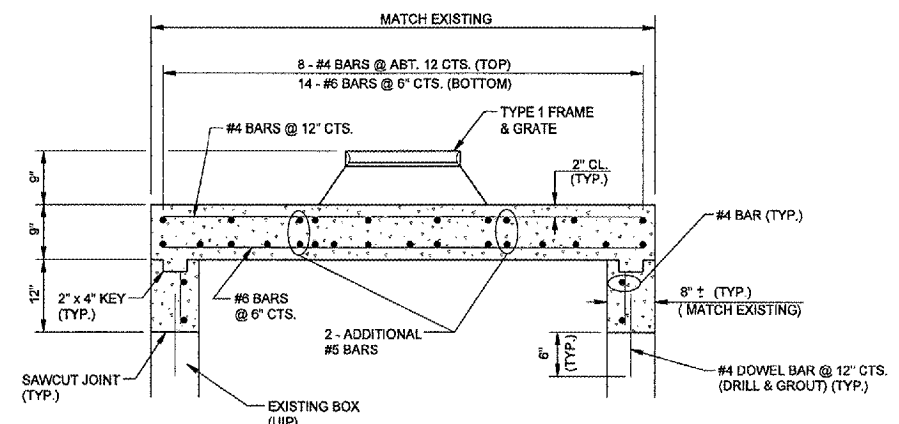
N.T.S.

NOTE: REMOVE EXISTING CONE TOP AND REPLACE WITH DETAIL SHOWN. ALTERNATE METHOD MAY BE USED WITH PRIOR APPROVAL FROM ENGINEER. ACTUAL DIMENSIONS MAY VARY FROM THOSE SHOWN.



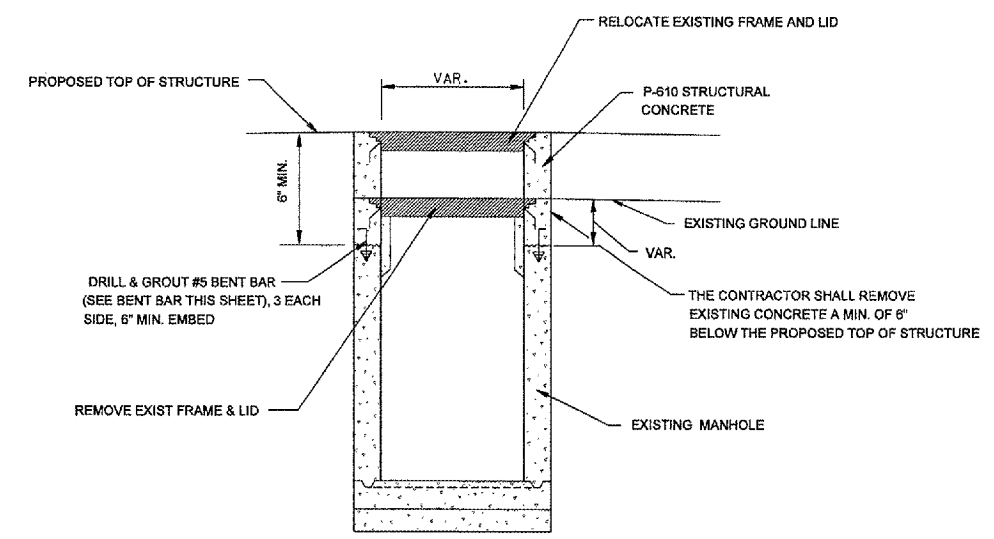
PLAN

N.T.S.



PART SECTION A-A

N.T.S.

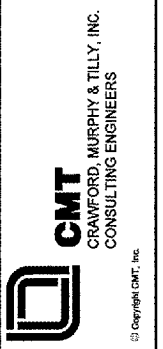


TYPE 1 INLET ADJUSTMENT DETAIL

N.T.S.



CONSTRUCT, LIGHT & MARK WEST LONG TERM PARKING LOT



IL PROJECT NUMBER PIA-3385

FILE:
DESIGN BY: BWG
DRAWN BY: JSP
CHECKED BY: BJS
APPROVED BY: CET
DATE: JUNE 17, 2005
JOB No: 05081-03-00

DRAINAGE DETAILS

SHEET 18 OF 41 SHEETS