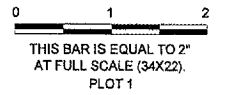
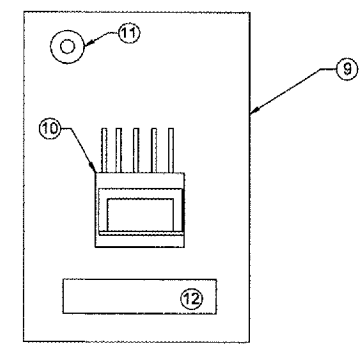
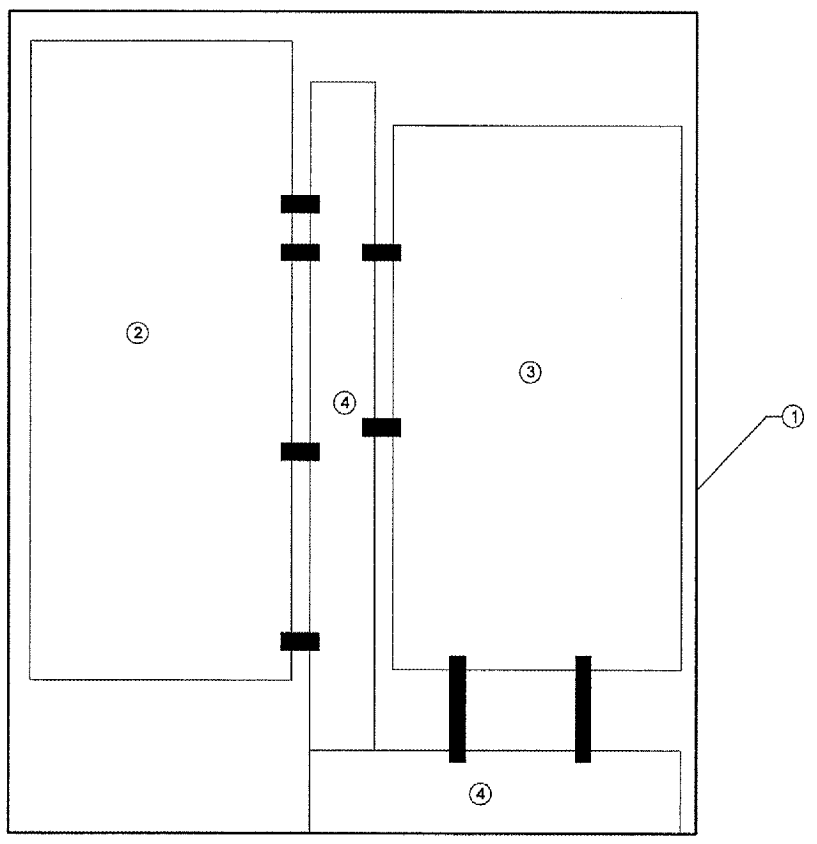
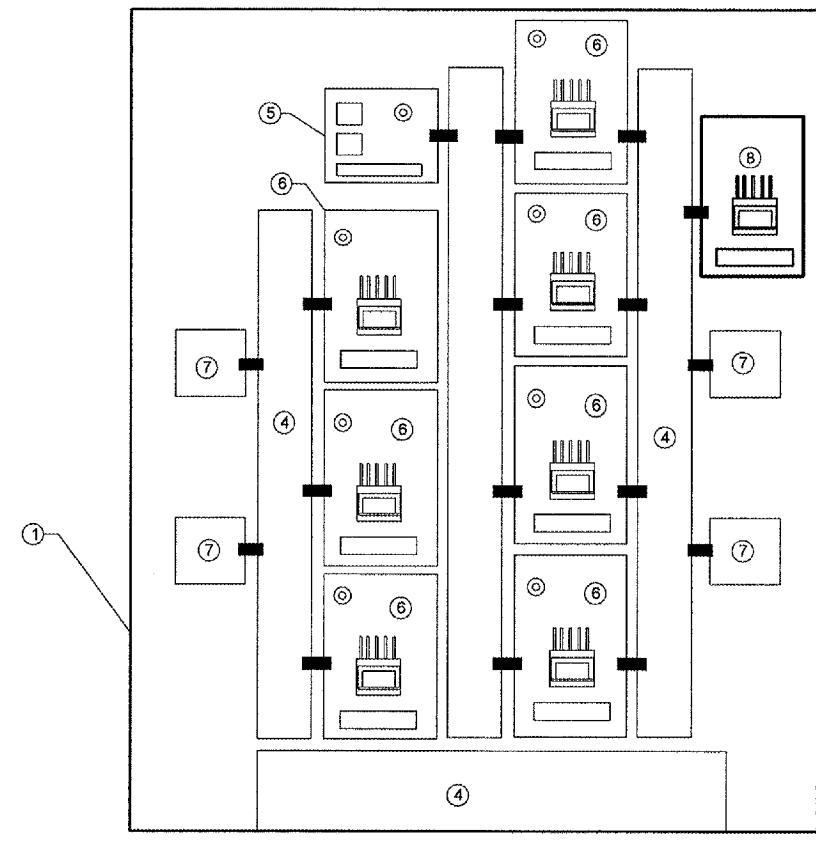
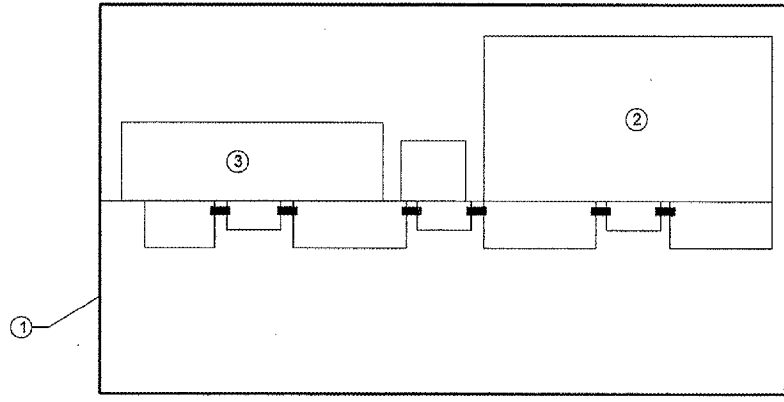
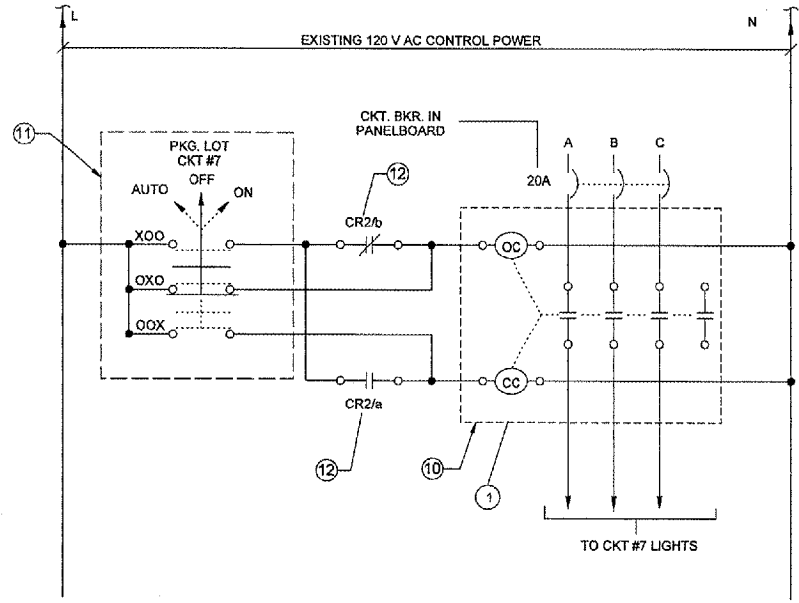


NUMBER	BY	DATE



CONTROLLER MODIFICATIONS NOMENCLATURE

- ① EXISTING PARKING LOT CONTROLLER
- ② EXISTING 480V DISTRIBUTION PANELBOARD, USE ONE OF THE SPARE 20A-3P CIRCUIT BREAKERS FOR PARKING LOT CIRCUIT #7 POWER. REVISE EXISTING PANELBOARD SCHEDULE ACCORDINGLY.
- ③ EXISTING 25 KVA MINI-POWER CENTER.
- ④ EXISTING WIREWAY
- ⑤ EXISTING PHOTOCELL BYPASS SELECTOR SWITCH AND EXISTING CONTROL RELAYS CR1 & CR2. NOTE THAT THE SPARE FORM C CONTACT ON CR2 WILL BE USED TO CONTROL PARKING LOT CIRCUIT #7 LIGHTING CONTACTOR.
- ⑥ EXISTING LIGHTING CONTACTOR AND SELECTOR SWITCH.
- ⑦ EXISTING BOOST TRANSFORMER.
- ⑧ NEW LIGHTING CONTACTOR, SELECTOR SWITCH AND TERMINAL BLOCKS IN NEW ENCLOSURE. INSTALL IN EXISTING PARKING LOT LIGHTING CONTROLLER WITH REQUIRED CONDUIT NIPPLES.
- ⑨ NEW NEMA 1 ENCLOSURE SIZED AS REQUIRED TO HOUSE LIGHTING CONTACTOR, SELECTOR SWITCH AND TERMINAL STRIPS.
- ⑩ MECHANICALLY-HELD LIGHTING CONTACTOR, 30A, 4-POLE, SQUARE D SM012V02, OR EQUIVALENT.
- ⑪ DOOR-MOUNTED THREE-POSITION MAINTAINED-CONTACT, NON-METALLIC SELECTOR SWITCH WITH AUTO-OFF-ON NAMEPLATE, SQUARE D TYPE SK OR EQUIVALENT, WITH CONTACT BLOCKS AS SHOWN TO PERFORM OPERATIONS AS SHOWN IN SCHEMATICS.
- ⑫ 600V TERMINAL BLOCKS AS REQUIRED FOR INCOMING AND OUTGOING WIRING.



CONSTRUCT, LIGHT & MARK
WEST LONG TERM PARKING LOT

IL PROJECT NUMBER
PIA-3385

FILE:
DESIGN BY: WDP
DRAWN BY: JSP
CHECKED BY: BWG
APPROVED BY: CET
DATE: JUNE 17, 2005
JOB No: 05061-03-00