

LUMINAIRE SCHEDULE				
FIXTURE TYPE	MANUFACTURER OR EQUIVALENT	MAKE OR MODEL #	LAMP	LOCATION & MOUNTING
TYPE II ROADWAY	LITHONIA	AS2-250M-SR2-480-RPA-SCWA-L/LP-DNA (*) = SEE NOTE #1	250W PULSE-START METAL HALIDE	POLE-TOP MOUNT (SEE FIXTURE LAYOUT GRID FOR SINGLE-OR TWIN-LUMINAIRE INFORMATION)
TYPE IV PARKING LOT	LITHONIA	AS2-250M-SR4W-480-RPA-SCWA-L/LP-DNA (*) = SEE NOTE #1	250W PULSE-START METAL HALIDE	POLE-TOP MOUNT (SEE FIXTURE LAYOUT GRID FOR SINGLE-OR TWIN-LUMINAIRE INFORMATION)

NOTES: #1 - FOR LUMINAIRE CONFIGURATION INFORMATION, SEE FIXTURE LAYOUT GRID.
#2 - COORDINATE POLE TOP FITTER WITH POLE SUPPLIER.

POLE SCHEDULE				
POLE HEIGHT	MANUFACTURER OR EQUIVALENT	MAKE OR MODEL #	TYPE	MINIMUM EPA (FT)
30'	LITHONIA	RTA-30-10G-730-VD-BA (INCLUDES VIBRATION DAMPER)	ROUND TAPERED ALUMINUM	14.3 FT @ 100MPH WITH 1.3 GUST FACTOR

NOTES: #1 - SINGLE LUMINAIRE MOUNTING CAT. #, DM19AS. TWIN LUMINAIRE MOUNTING CAT. #, DM22AS
#2 - COORDINATE POLE TOP FITTER WITH LUMINAIRE SUPPLIER.
#3 - ALL POLES SHALL INCLUDE A PERMANENT TAG INDICATING EACH CIRCUIT # AND EACH LUMINAIRE #.

FIXTURE LAYOUT GRID			
CKT # - FIXT.#	LUMINAIRE TYPE AND QUANTITY		
	ONE TYPE II	ONE TYPE II & ONE TYPE IV	TWO TYPE IV
7-1		X	
7-2			X
7-3			X
7-4			X
7-5			X
7-6			X
7-7			X
7-8			X
7-9			X
7-10	X		
7-11	X		
7-12	X		
7-13	X		
7-14	X		
7-15	X		

NOTES: FIXTURE 7-1: ORIENT THE TYPE II LUMINAIRE TOWARDS THE NORTH SIDE OF THE PARKING LOT. ORIENT THE TYPE IV LUMINAIRE TOWARDS THE SOUTH SIDE OF THE PARKING LOT.

REVISIONS		
NUMBER	BY	DATE

0 1 2
THIS BAR IS EQUAL TO 2' AT FULL SCALE (34X22).
PLOT 1

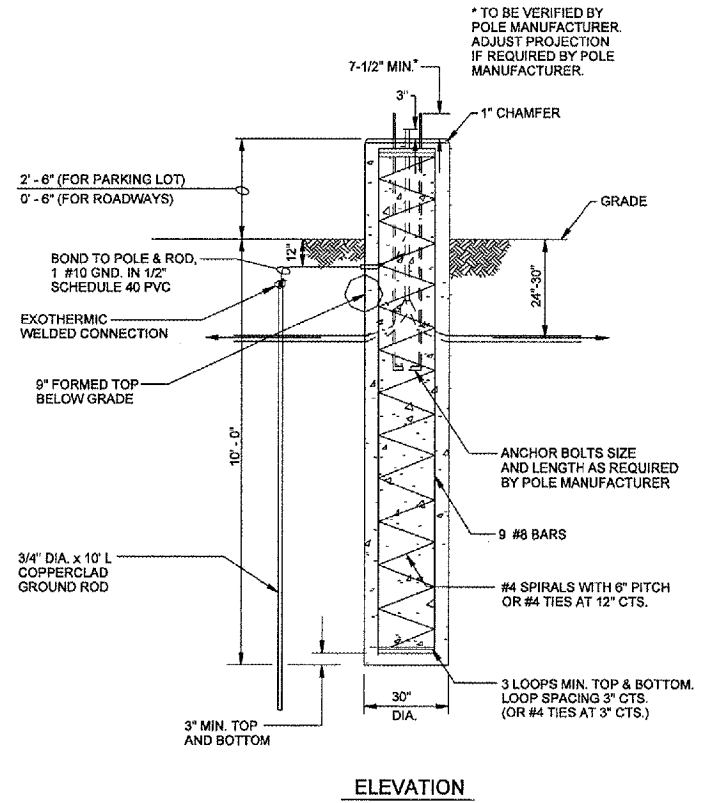
G R E A T E R
Peoria
R E G I O N A L
A i r p o r t

CONSTRUCT, LIGHT & MARK
WEST LONG TERM PARKING LOT

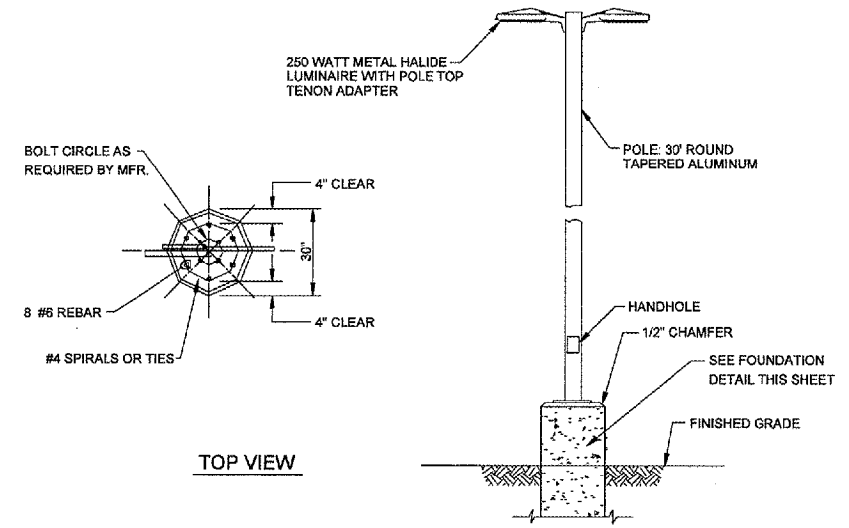
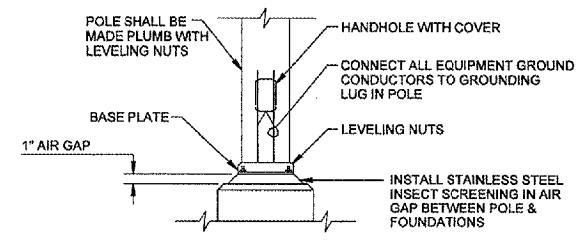
CMT
CRAMFORD, MURPHY & TILLY, INC.
CONSULTING ENGINEERS

IL PROJECT NUMBER
PIA-3385

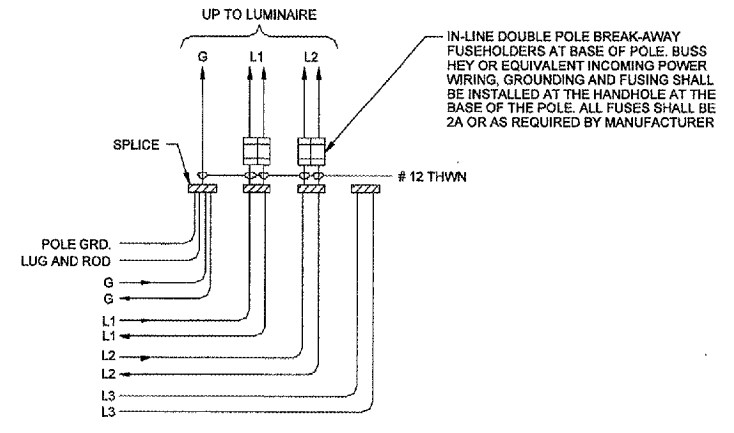
FILE:
DESIGN BY: WDP
DRAWN BY: JSP
CHECKED BY: BWG
APPROVED BY: CET
DATE: JUNE 17, 2005
JOB No: 05061-03-00
ELECTRICAL DETAILS SHEET 1 OF 2
SHEET 29 OF 41 SHEETS



ROADWAY AND PARKING LOT
POLE BASE DETAIL
N.T.S.



ROADWAY AND PARKING LOT
LIGHT STANDARDS
(TWO LUMINAIRE SHOWN)
N.T.S.



DETAIL "A" FIXTURE WIRING
(TYP. OF DOUBLE LUMINAIRE)
N.T.S.

05/26/2005 k:\peoria\0506103\draw\sheet29_electrical\details1.dgn