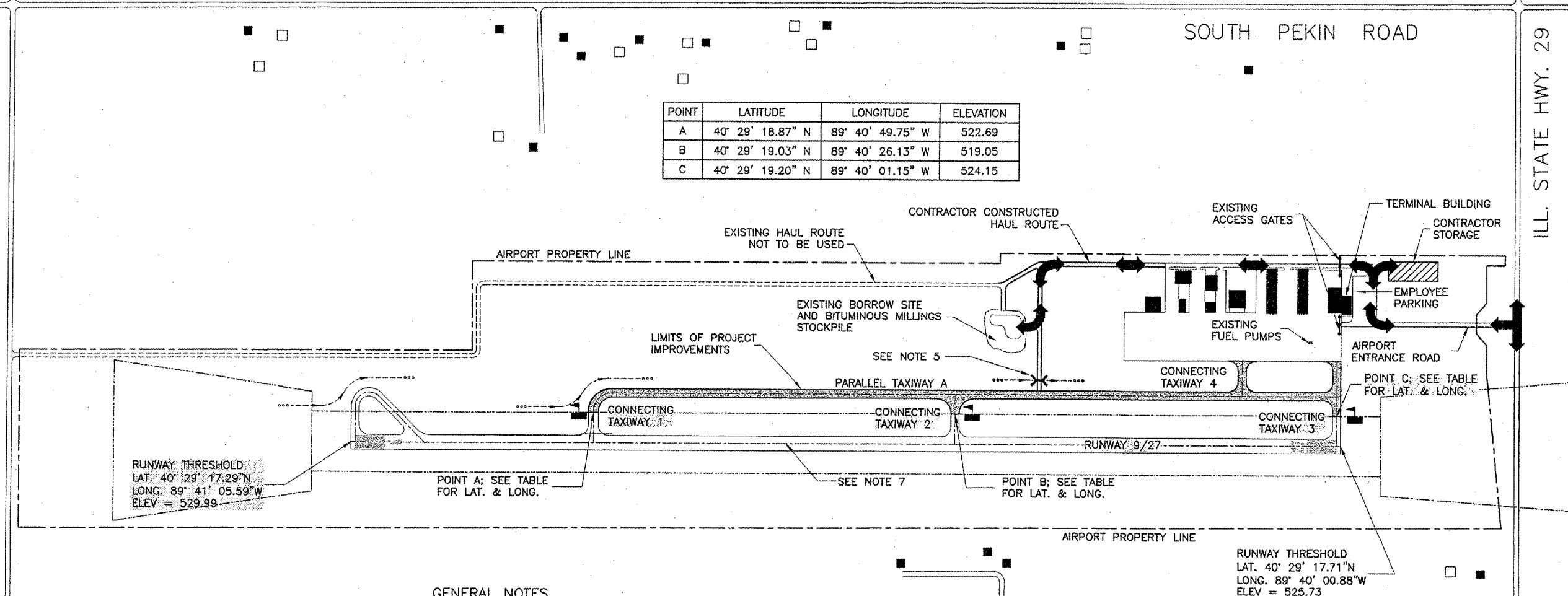




REVISIONS		
NUMBER	BY	DATE

0 1 2
 THIS BAR IS EQUAL TO 2"
 AT FULL SCALE (34X22).

POINT	LATITUDE	LONGITUDE	ELEVATION
A	40° 29' 18.87" N	89° 40' 49.75" W	522.69
B	40° 29' 19.03" N	89° 40' 26.13" W	519.05
C	40° 29' 19.20" N	89° 40' 01.15" W	524.15



RUNWAY THRESHOLD
 LAT. 40° 29' 17.29"N
 LONG. 89° 41' 05.59"W
 ELEV = 529.99

POINT A; SEE TABLE
 FOR LAT. & LONG.

SEE NOTE 7

POINT B; SEE TABLE
 FOR LAT. & LONG.

POINT C; SEE TABLE
 FOR LAT. & LONG.

RUNWAY THRESHOLD
 LAT. 40° 29' 17.71"N
 LONG. 89° 40' 00.88"W
 ELEV = 525.73

GENERAL NOTES

1. THE CONTRACTOR SHALL PROVIDE AN ACCESS ROAD AND HAUL ROAD OF HIS OWN STRUCTURE TO MAINTAIN HIS ACCESS TO THE PROJECT SITE AS HE DEEMS NECESSARY. INACCESSIBILITY OF THE SITE DURING CONSTRUCTION WILL NOT BE CONSIDERED AS A BASIS FOR THE EXTENSION OF TIME IF THE CONTRACT CALENDAR DAYS ARE EXCEEDED. CONTRACTOR'S HAUL ROAD SHALL BE REGRADED AND RETURNED UPON COMPLETION OF WORK. AT THE OPTION OF THE AIRPORT, THE HAUL ROAD MAY BE ALLOWED TO REMAIN IN-PLACE.
2. THE CONTRACTOR SHALL USE THE EXISTING GATES FOR AIRFIELD ACCESS. ALL GATES SHALL BE SECURED AT ALL TIMES AND LOCKED AT THE END OF EACH WORK DAY. ANY FINES IMPOSED ON THE AIRPORT DUE TO CONTRACTOR'S SECURITY VIOLATIONS SHALL BE THE RESPONSIBILITY OF THE CONTRACTOR.
3. THE CONTRACTOR WILL BE PERMITTED TO STORE EQUIPMENT AND MATERIAL AT THE LOCATIONS SHOWN ON THIS SHEET. THE MAXIMUM HEIGHT OF MATERIAL, EQUIPMENT OR STOCKPILE SHALL BE 25 FEET.
4. ACCESS ROUTES ARE TO BE ESTABLISHED BY THE CONTRACTOR AS SHOWN ON THIS SHEET AND THE CONSTRUCTION ACTIVITY PLANS.
5. CONTRACTOR SHALL INSTALL 20 L.F. OF 18-INCH DIAMETER CORRUGATED METAL PIPE AT THE LOCATION SHOWN IN ORDER TO CONSTRUCT THE CONTRACTOR'S ACCESS ROAD ACROSS AN EXISTING DRAINAGE SWALE. UPON COMPLETION OF CONSTRUCTION OPERATIONS, THE CONTRACTOR SHALL REMOVE THE 18-INCH C.M.P. AND REGRADE THE SWALE TO DRAIN. NO ADDITIONAL COMPENSATION WILL BE MADE TO THE CONTRACTOR FOR THIS WORK.
6. SEE CONSTRUCTION ACTIVITY PLANS FOR PROJECT PHASING AND DETAILED HAUL ROUTES.
7. THE CONTRACTOR SHALL BE ALLOWED TO USE RUNWAY 9/27 AS A HAUL ROAD AT THE DISCRETION OF THE RESIDENT ENGINEER PROVIDED THE CONTRACTOR HAVE A FLAGGER IN CONTACT WITH AIR TRAFFIC AT ALL TIMES. FLAGGER LOCATIONS SHALL BE AS SHOWN.

LEGEND

- CONTRACTOR'S ACCESS AND HAUL ROUTE
- CONTRACTOR STAGING AND STORAGE AREA
- LIMITS OF PROJECT IMPROVEMENTS
- FLAGGER REQUIRED IF RUNWAY IS TO BE USED AS A HAUL ROUTE
- 18-INCH CMP

PEKIN MUNICIPAL AIRPORT
 PEKIN, TAZEWELL COUNTY, ILLINOIS
 REHABILITATE AND MARK THE PARALLEL TAXIWAY
 SITE PLAN

© Copyright Oct. Inc.
CMT
 CRAWFORD, MURPHY & TILLY, INC.
 CONSULTING ENGINEERS
 License No. 181-000613

DESIGN BY:	SMS
DRAWN BY:	CMT
CHECKED BY:	SMS
APPROVED BY:	SMS
DATE:	04/22/2005
JOB No:	04069-02-00
IL PROJECT:	C15-3434
A.I.P. PROJECT:	3-17-0078-B8
SHEET	3 OF 13 SHEETS