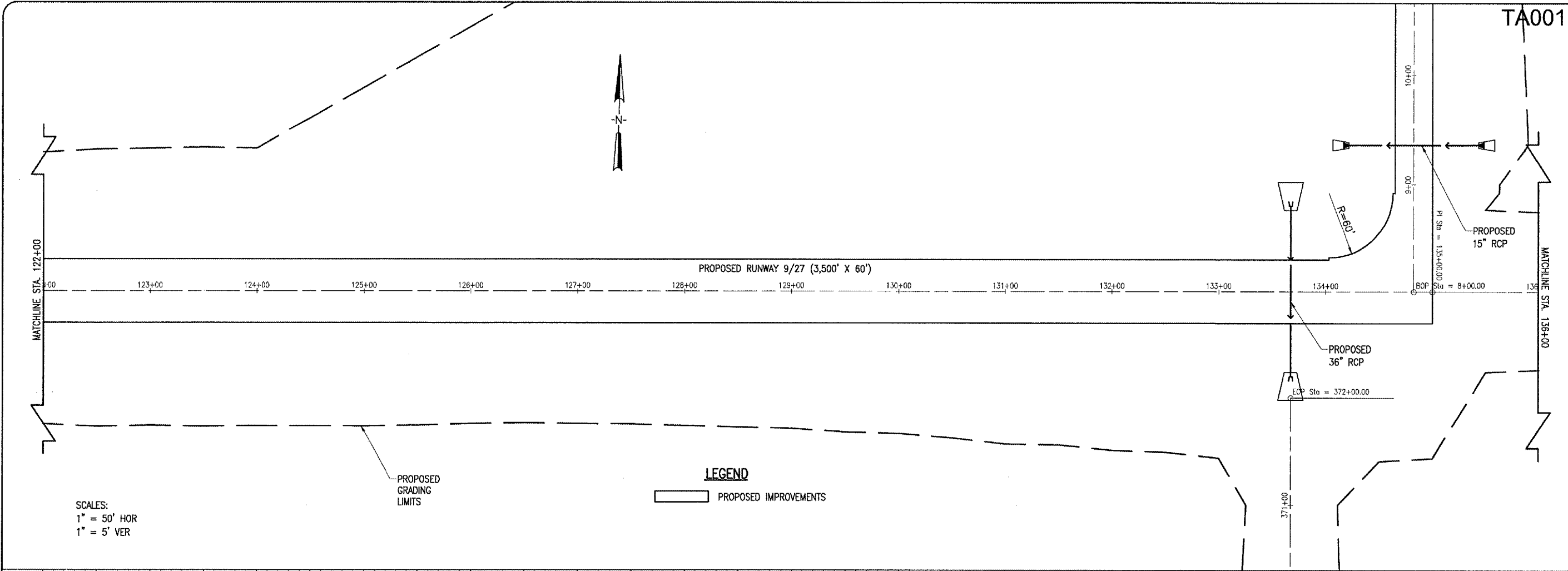


MAY 04, 2005 2:08 PM RAW
 I:\AIRPORT\TAYLORVILLE\828-03RWYGD\AIRPORT\SHEETS\9-703-RWY.DWG - STA. 122+00 TO STA. 136+00

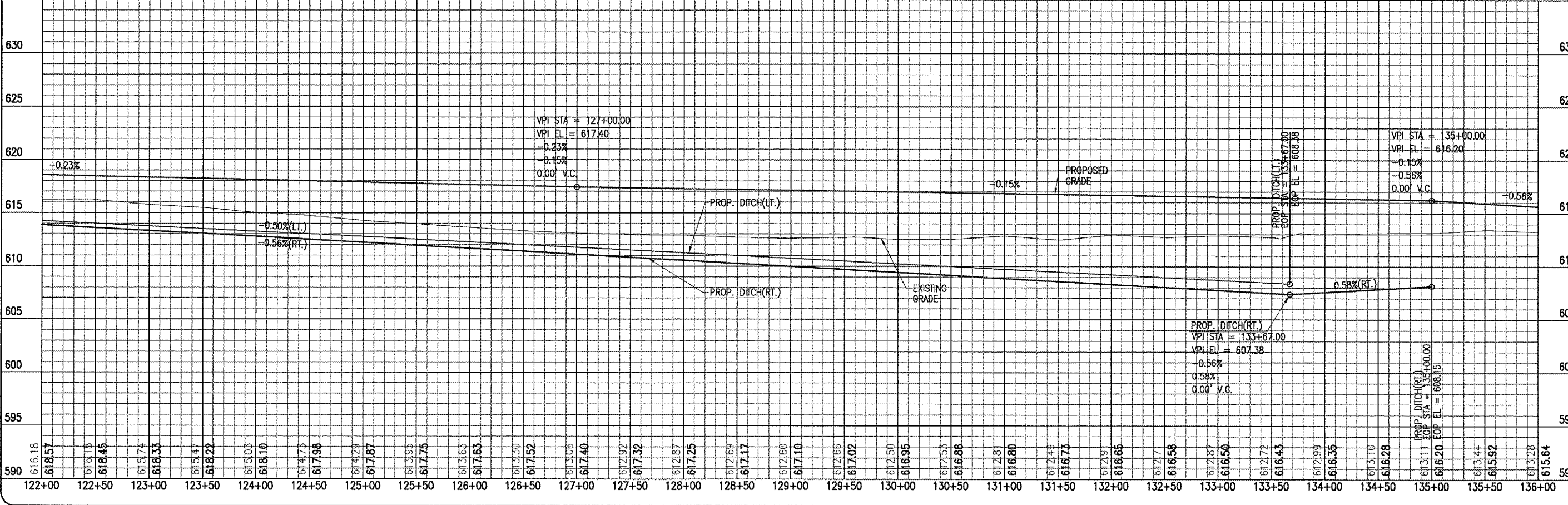


SCALES:
 1" = 50' HOR
 1" = 5' VER

PROPOSED
 GRADING
 LIMITS

LEGEND

PROPOSED IMPROVEMENTS

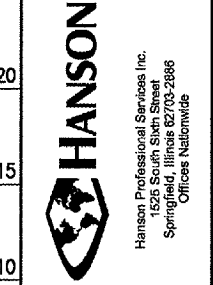


DATE	REVISION	BY

TAYLORVILLE MUNICIPAL AIRPORT
TAYLORVILLE, ILLINOIS

IL. PROJ.: TAZ-3166
 A.I.P. PROJ.: 3-17-0100-87

LAYOUT	RAW	02/16/05
DRAWN	BAK	02/16/05
REVIEWED	CAH	03/28/05



CONSTRUCT
RUNWAY 9-27

PROPOSED
 RUNWAY 9-27 PLAN & PROFILE
 STA. 122+00 TO STA. 136+00